

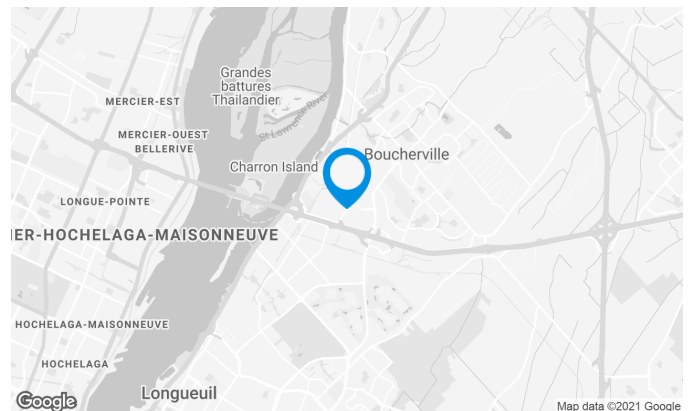
In the heart of Boucherville Industrial Park, this property offers easy access to all major highways.

Building characteristics

LAND AREA	118,628 ft ²
AVAILABILITY	May 2022
YEAR OF CONSTRUCTION	1989
NUMBER OF FLOORS	1
SPRINKLERS	Yes

BUILDING ACCESSIBILITY

PARKING - OUTDOOR	140
-------------------	-----



Stéphane Robidas

LEASING DIRECTOR
LEASING - INDUSTRIAL, MONTREAL AREA

T 514 737-3344 #3373

C 514 605-5152

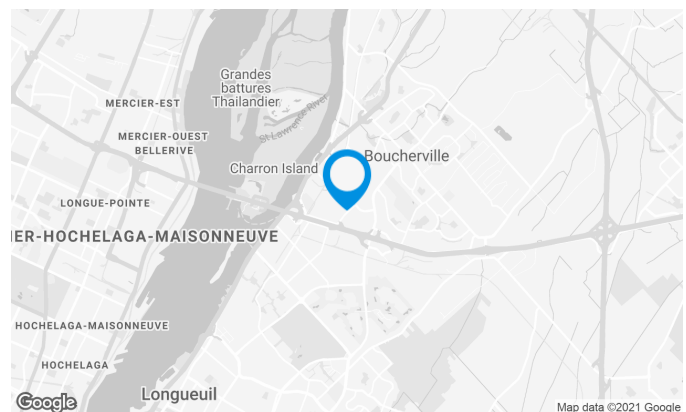
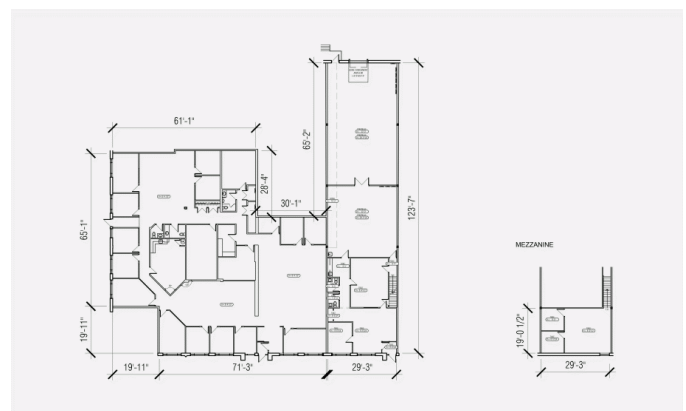
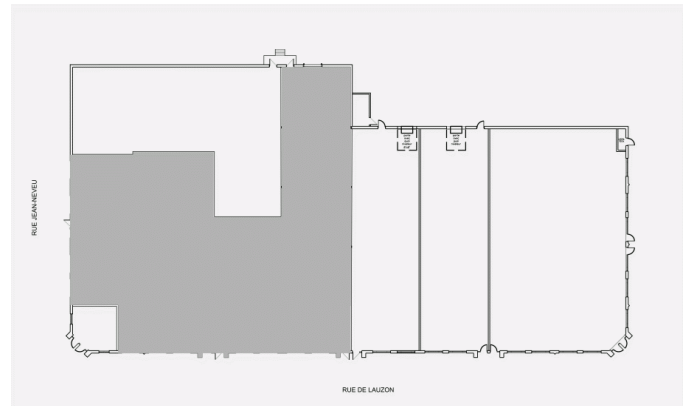
E STEPHANE.ROBIDAS@COMINAR.COM

Space characteristics

NUMBER OF FLOORS	1
HEIGHT	20'
SHIPPING	1 truck level
ADDITIONAL RENT	\$4.91 /ft ²

AVAILABLE LEASING AREA: 10,740 FT²

WAREHOUSE	3,000 ft ²
OFFICES	7,740 ft ²
AVAILABILITY	May 2022



Stéphane Robidas

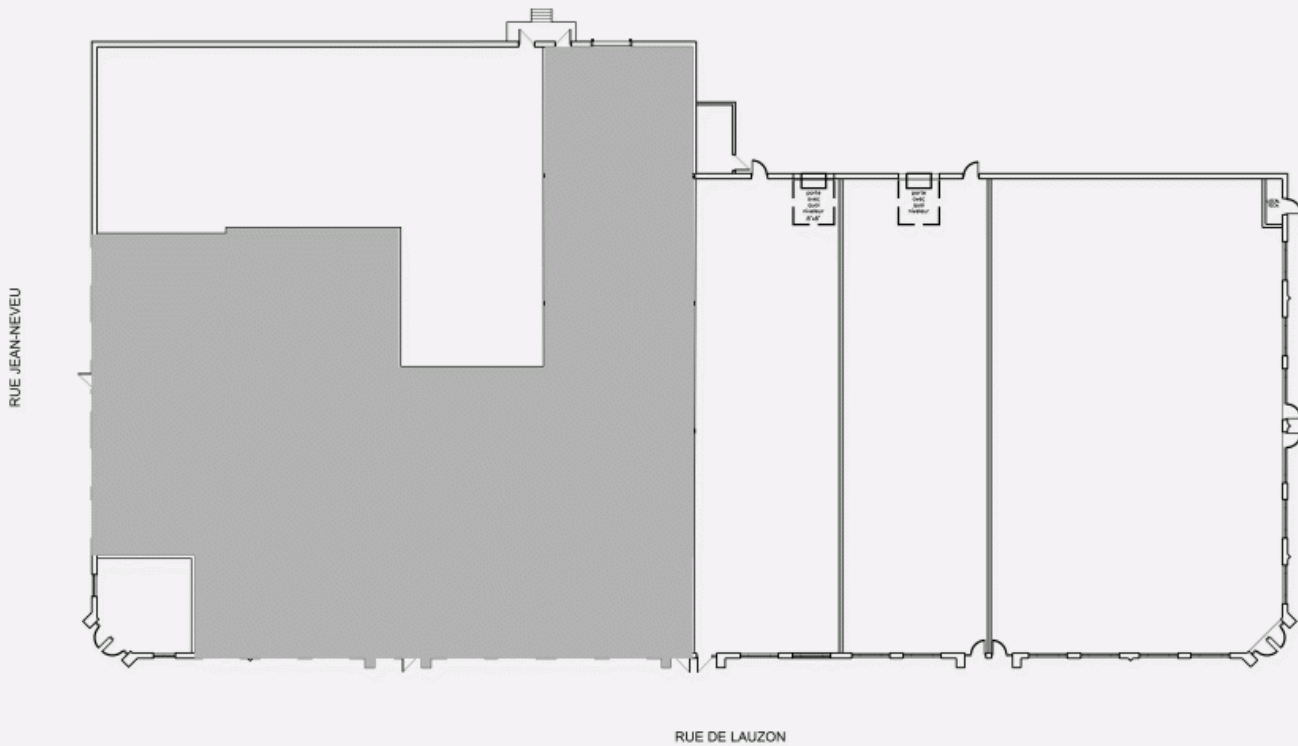
LEASING DIRECTOR
LEASING - INDUSTRIAL, MONTREAL AREA

T 514 737-3344 #3373

C 514 605-5152

E STEPHANE.ROBIDAS@COMINAR.COM

LOCATION PLAN



LAYOUT PLAN

