

4975 Rideau Street, Quebec, QC, G2E 5H5 Suite #175

Building characteristics

LAND AREA 106,598 ft²

YEAR OF CONSTRUCTION 1990

NUMBER OF FLOORS 1

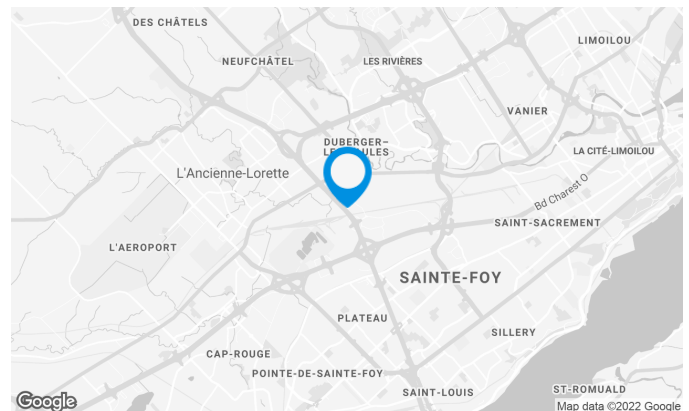
SPRINKLERS Yes

BUILDING ACCESSIBILITY

PARKING - OUTDOOR 104

ROAD ACCESS Located at the intersection of the Henri IV highway and Hamel boulevard, in the Commerce Crossroads.

BUS 88



Location Cominar



T 418 681-6300 #2411

E LOCATIONQUEBEC@COMINAR.COM

4975 Rideau Street, Quebec, QC, G2E 5H5 Suite #175

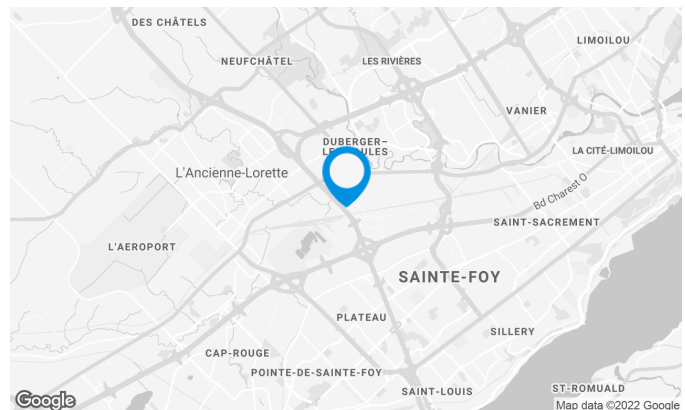
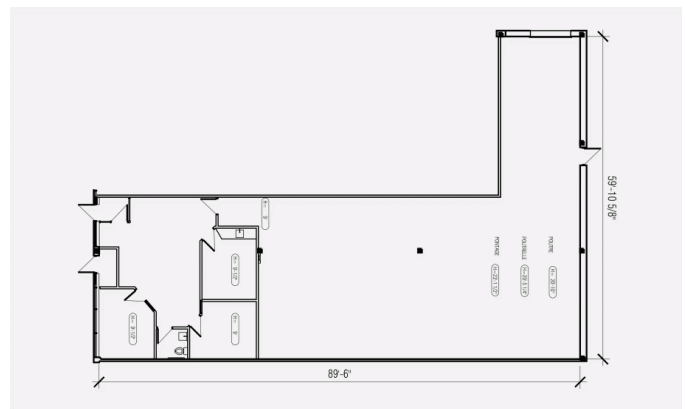
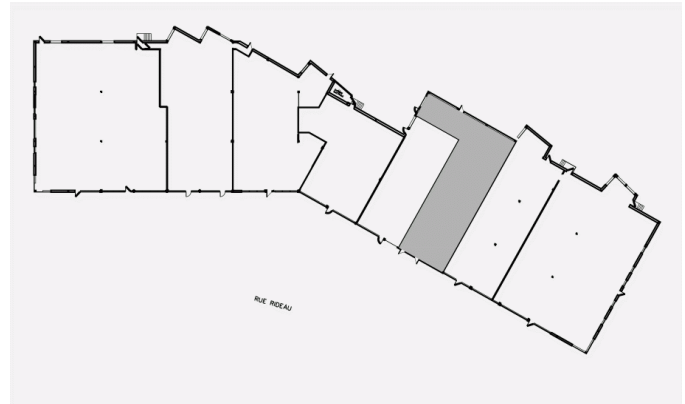
The space is adjacent to room 170 and 180 for a possible area of 8 205 square feet.

Space characteristics

NUMBER OF FLOORS	1
HEIGHT	9' - 20'
SHIPPING	1 truck level
HEATING	Electricity
COMMENTS	May be contiguous with suite 180. Possibility of 6518 square feet.

AVAILABLE LEASING AREA: 3,220 FT²

OFFICES	3,220 ft ²
---------	-----------------------

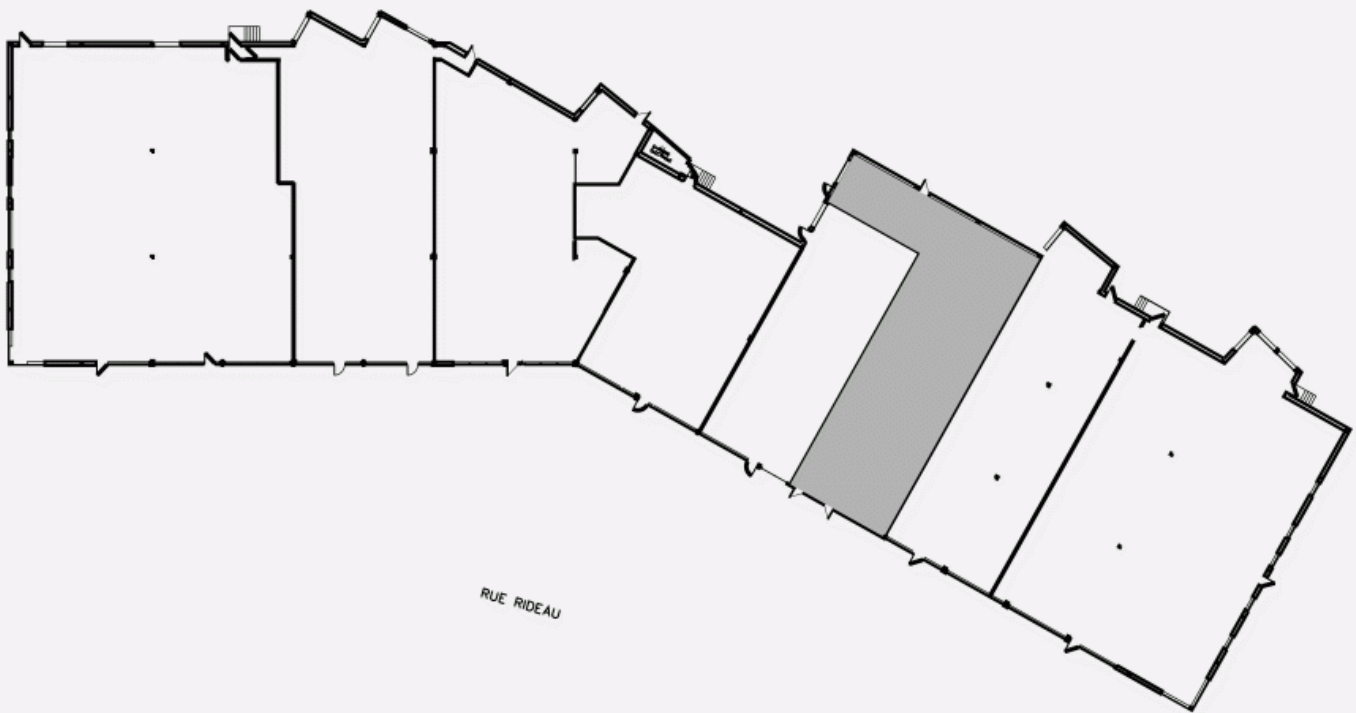


Location Cominar



T 418 681-6300 #2411
E LOCATIONQUEBEC@COMINAR.COM

LOCATION PLAN



LAYOUT PLAN

