

1600 Le Corbusier Boulevard, Laval, QC, H7S 1Z2

Suite #200

Centre Laval opened in 1968 and has undergone several expansions and renovations since 1999. This shopping centre accommodates over 130 retailers, big box stores and services on two floors totalling 683,000 square feet.

Cominar's offering you a **total makeover** of one of his local, **up to 25,000 sft.**, which will be entirely redeveloped according to your needs, for an optimal operation of your own. **The local is on 2 floors**, with a direct access to the shopping mall, and on from the outside of the building.

Plus, for being part of many retailers of the center, you will have the chance to install your logo on the building, with a full visibility from the major Highway 15 or the Le Corbusier Boulevard.

It also offers a vast parking area. Located next to Highway 15 and less than 10 km north of Montreal, Centre Laval is easily accessible by public transit, as it is steps away from the Montmorency metro station.

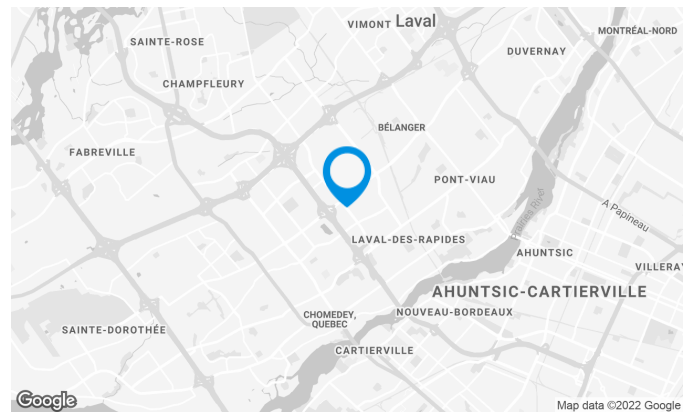


Building characteristics

| | |
|----------------------|-------------|
| TOTAL LEASING AREA | 702,756 ft² |
| YEAR OF CONSTRUCTION | 1968 |
| NUMBER OF FLOORS | 2 |
| ASCENCEURS | 1 |
| SPRINKLERS | Yes |

BUILDING ACCESSIBILITY

| | |
|-------------------------|--|
| OUTDOOR PARKING | 3,131 |
| PARC À VÉLOS DISPONIBLE | Yes |
| ROAD ACCESS | Highway 15 & 440 Saint-Martin O & du Souvenir Boulevard |
| BUS | 39, 40, 42, 50, 60, 61, 63, 65, 70, 76, 360, 903 |
| METRO STATION | Montmorency |



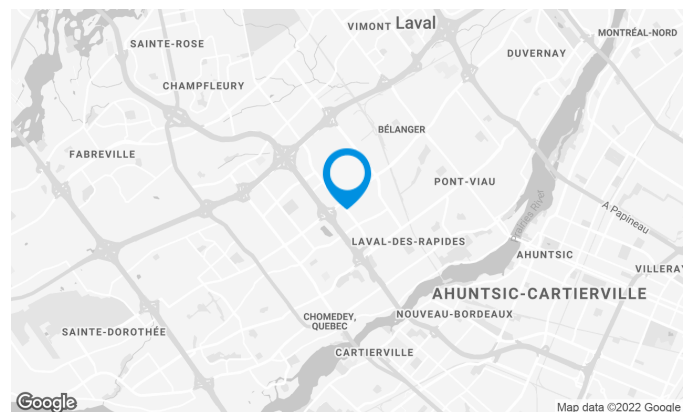
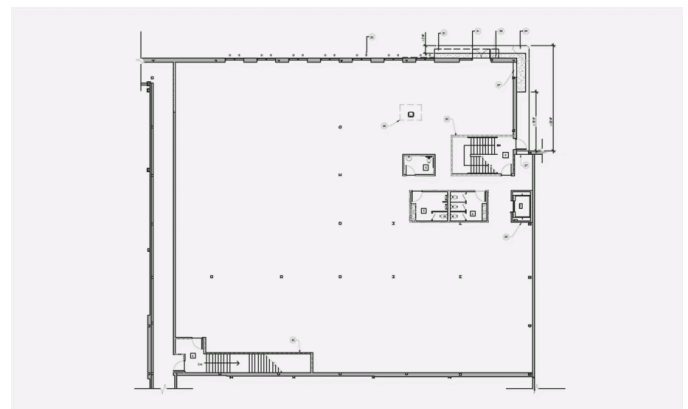
Audrey Duvivier

LEASING AGENT
LEASING - OFFICES, MONTREAL AREA

T 514 337-8151 #3314
C 514 661-0993
E AUDREY.DUVIVIER@COMINAR.COM

Space characteristics

| | |
|------------------------|--------------------------|
| AVAILABLE LEASING AREA | 25,000 ft ² |
| AVAILABILITY | Immediate |
| FLOOR AREA | 688,756 ft ² |
| ADDITIONAL RENT | \$22.22 /ft ² |
| ENERGY | Included |



Audrey Duvivier

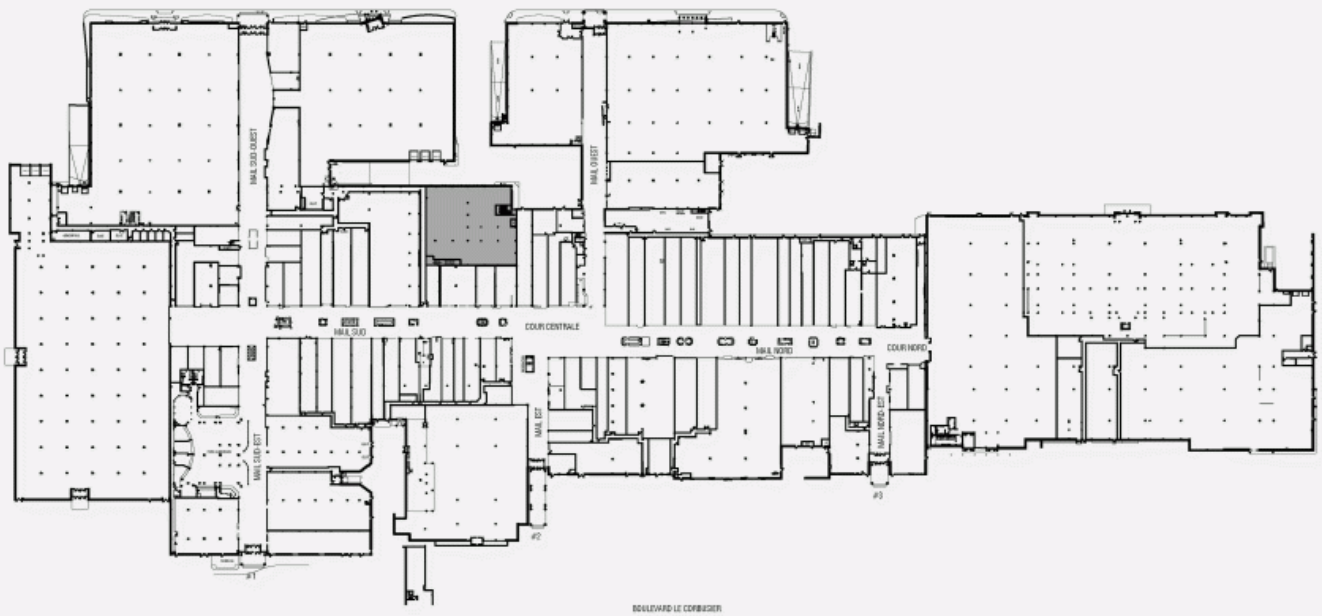
LEASING AGENT
LEASING - OFFICES, MONTREAL AREA

T 514 337-8151 #3314

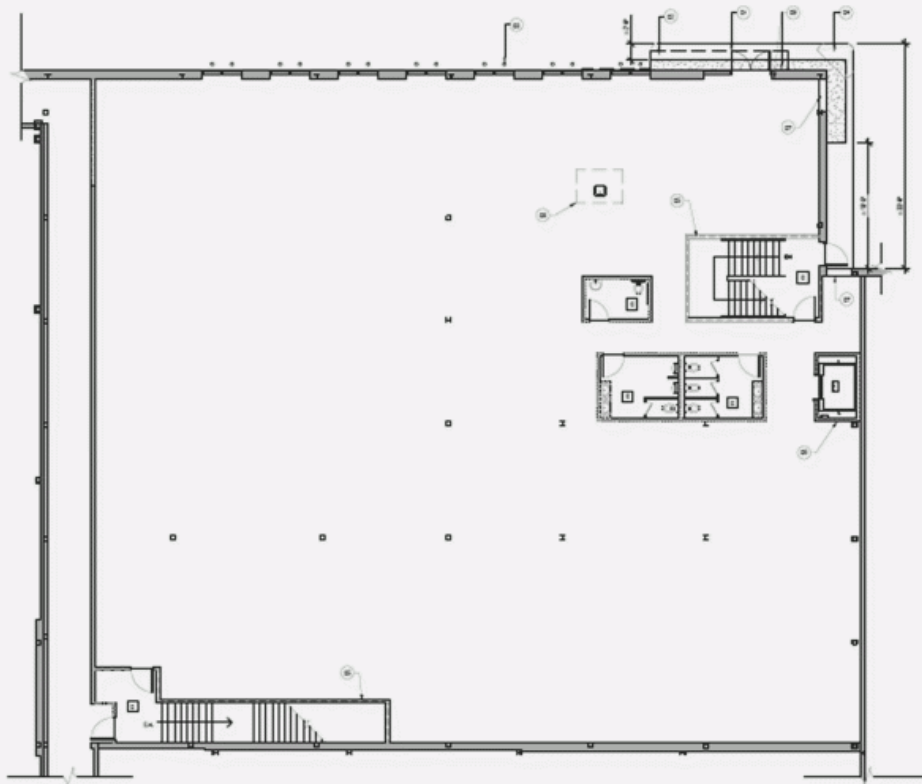
C 514 661-0993

E AUDREY.DUVIVIER@COMINAR.COM

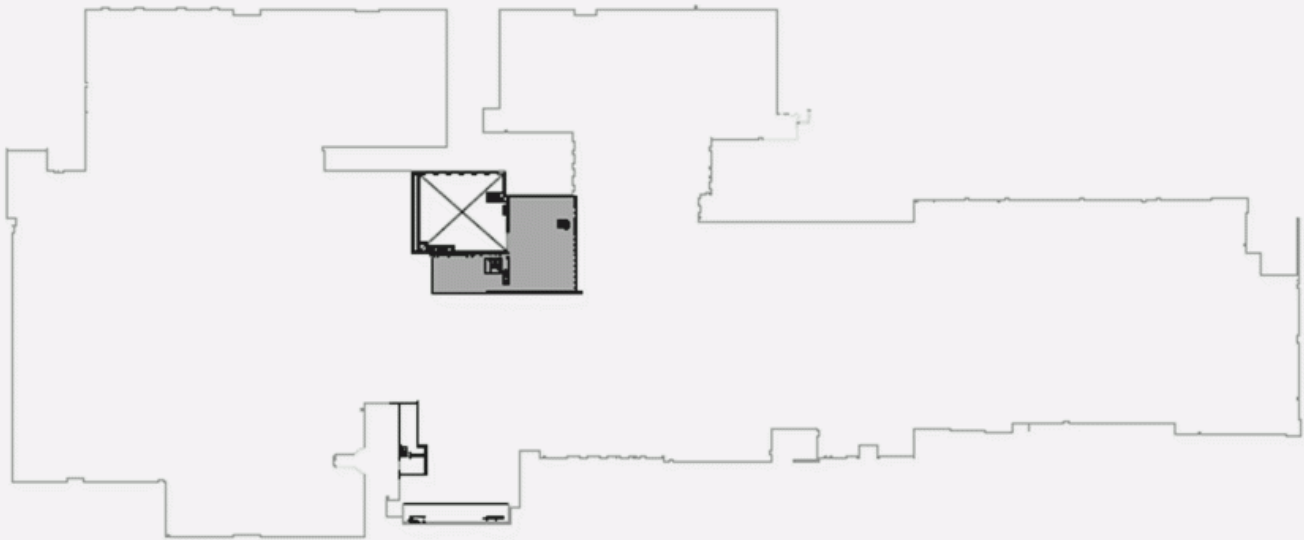
LOCATION PLAN - RDC



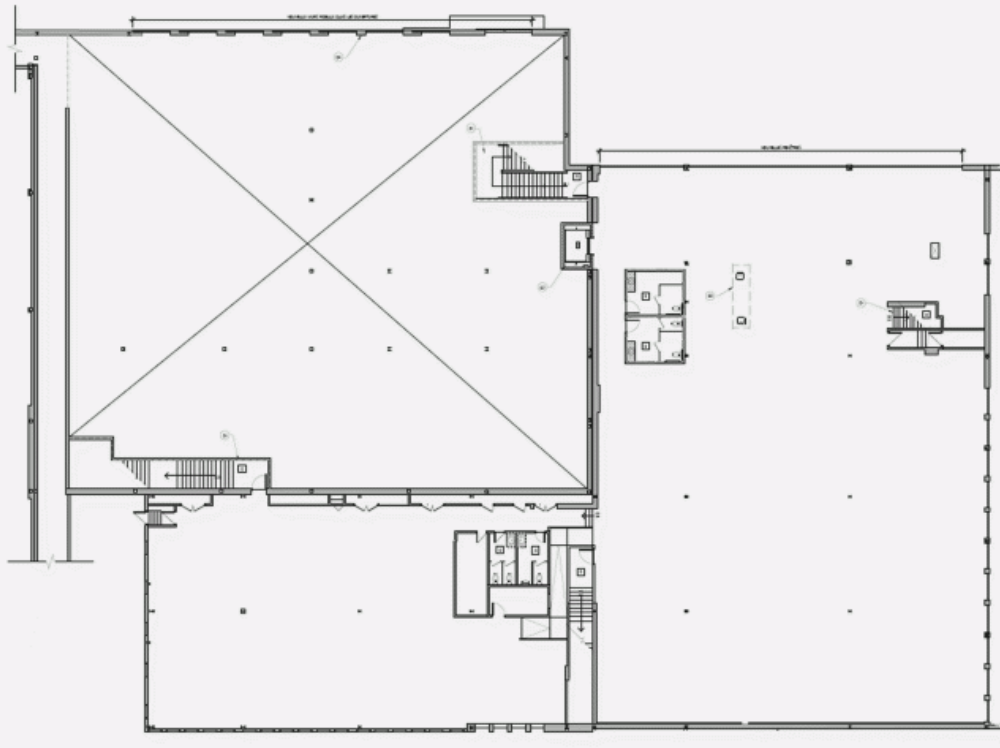
LAYOUT PLAN - GROUND FLOOR



LOCATION PLAN - 2ND FLOOR



PLAN D'AMÉNAGEMENT - 2ND FLOOR



1600 Le Corbusier Boulevard, Laval, QC, H7S 1Z2
Suite #200



For artistic representations only



For artistic representations only

1600 Le Corbusier Boulevard, Laval, QC, H7S 1Z2
Suite #200



For artistic representations only



For artistic representations only



Inside shopping center