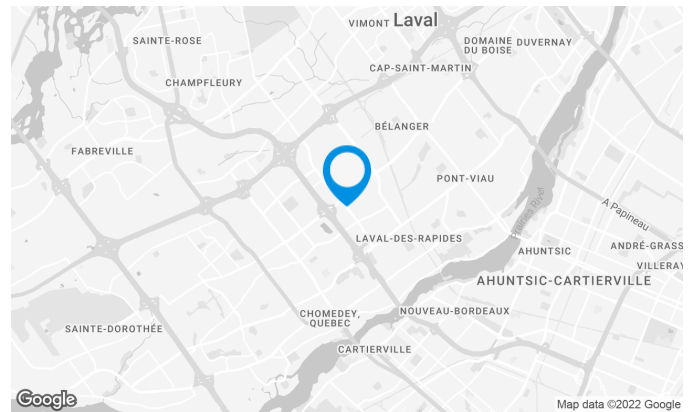


Centre Laval opened in 1968 and has undergone several expansions and renovations since 1999. This shopping centre accommodates over 130 retailers, big box stores and services on two floors totalling 683,000 square feet.

Cominar's offering you a **total makeover** of one of his local, **up to 25,000 sft.**, which will be entirely redeveloped according to your needs, for an optimal operation of your own. **The local is on 2 floors**, with a direct access to the shopping mall, and on from the outside of the building.

Plus, for being part of many retailers of the center, you will have the chance to install your logo on the building, with a full visibility from the major Highway 15 or the Le Corbusier Boulevard.

It also offers a vast parking area. Located next to Highway 15 and less than 10 km north of Montreal, Centre Laval is easily accessible by public transit, as it is steps away from the Montmorency metro station.



Building characteristics

TOTAL LEASING AREA	702,756 ft ²
YEAR OF CONSTRUCTION	1968
NUMBER OF FLOORS	2
ELEVATORS	1
SPRINKLERS	Yes

BUILDING ACCESSIBILITY

OUTDOOR PARKING	3,131
PARC À VÉLOS DISPONIBLE	Yes
ROAD ACCESS	Highway 15 & 440 Saint-Martin O & du Souvenir Boulevard
BUS	39, 40, 42, 50, 60, 61, 63, 65, 70, 76, 360, 903
METRO STATION	Montmorency

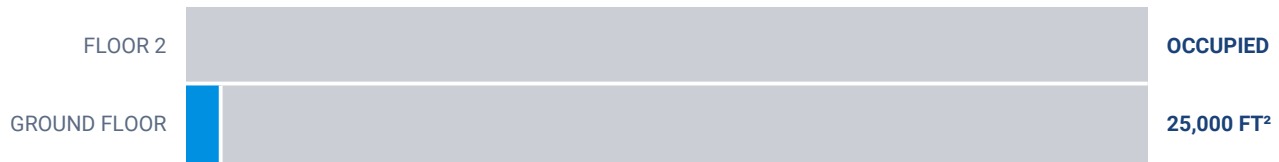


Julie Godbout

LEASING DIRECTOR
LEASING - OFFICES, MONTREAL AREA

T 514 737-3344 #3485
C 514 238-7079
E JULIE.GODBOUT@COMINAR.COM

Superficie locative disponible de 25,000 ft²



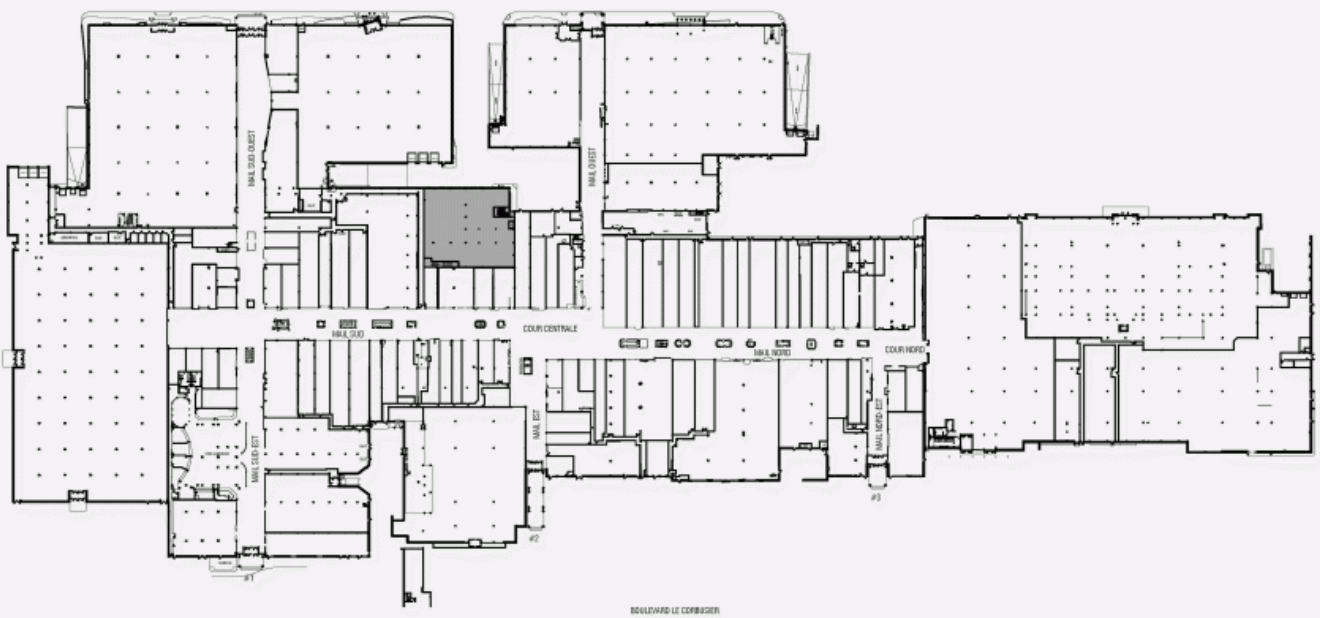
List of available offices

SUITE	FLOOR	AVAILABILITY	AREA
Suite #200	Combined floors	Immediate	25,000 ft ²



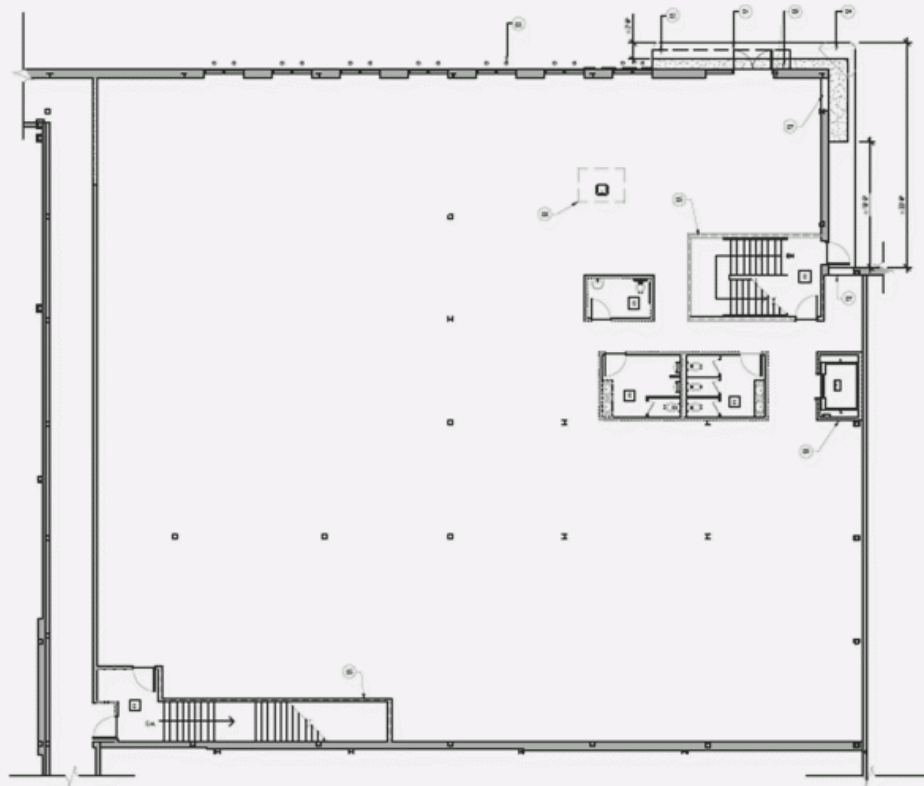
INSIDE SHOPPING CENTER

LOCATION PLAN - GROUND FLOOR

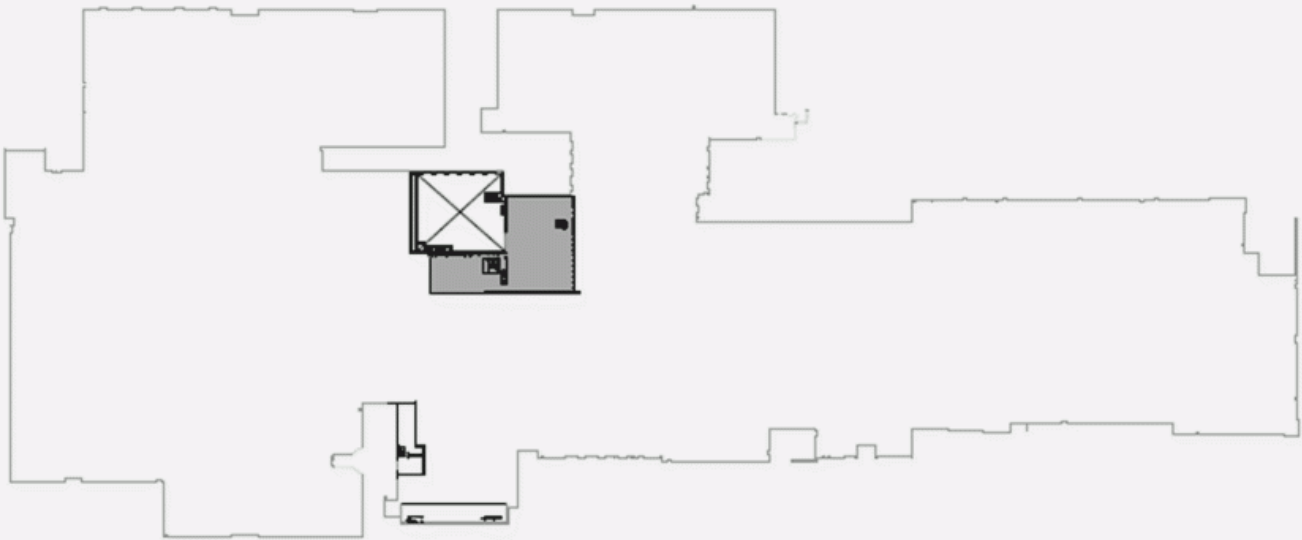


DEVELOPPEMENT D'IMPACT

LAYOUT PLAN - GROUND FLOOR



LOCATION PLAN - 2ND FLOOR



LAYOUT PLAN - 2ND FLOOR

