

**2600 Laurier Boulevard, Belle Cour Tower, Quebec, QC,  
G1V 4T3  
Suite #850**



Located on Laurier Boulevard, entry point to Québec City, and at the heart of the largest retail cluster in the area, Place de la Cité is the perfect place to distinguish your business.

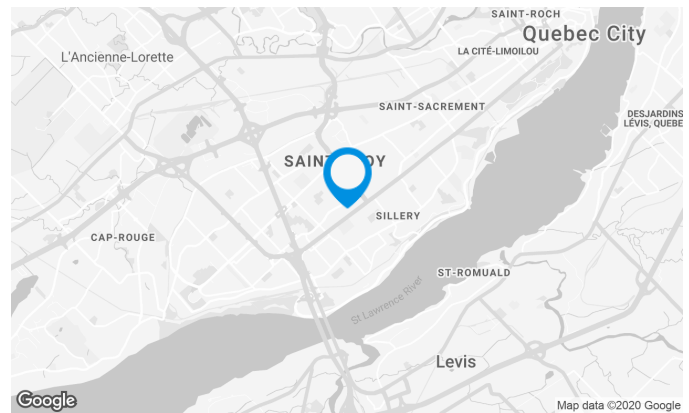
Renowned for its exclusive boutiques, this high-end shopping centre offers several designer labels – both national and international – for young and old alike.

Sheltering three office towers, 150 boutiques and services, trendy restaurants, a gym, gourmet food shops, and one of Québec City’s biggest health clinics, Place de la Cité is a must-see destination.



**Building characteristics**

TOTAL LEASING AREA	117,877 ft <sup>2</sup>
BUILDING AREA	117,877 ft <sup>2</sup>
NUMBER OF FLOORS	8
ASCENCEURS	2
OPTICAL FIBER	Yes
BUILDING SERVICES	Cleansing service is available apon request.



**BUILDING ACCESSIBILITY**

BUS	11,13,16,27E,34E,35E,75,93,294,295,315,800,801,804,915,L2,L3
-----	--

**AWARDS**

BOMA Best Silver, Boma Best Silver certified building.

**Location Cominar**

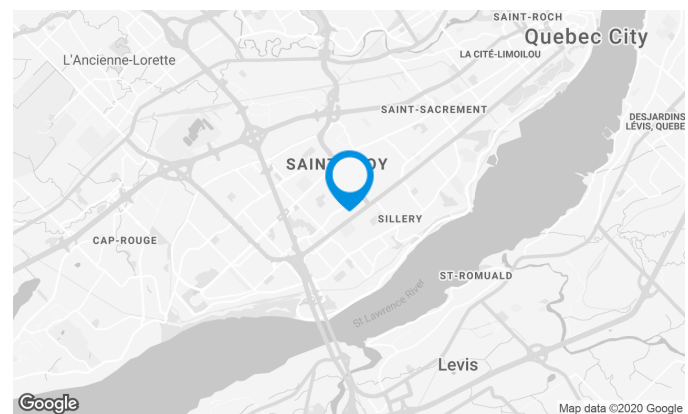
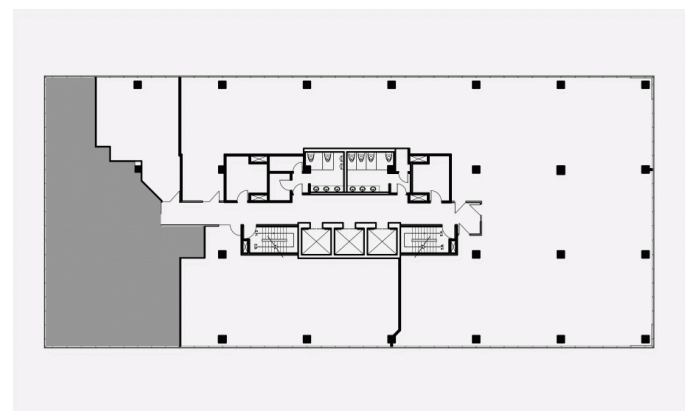
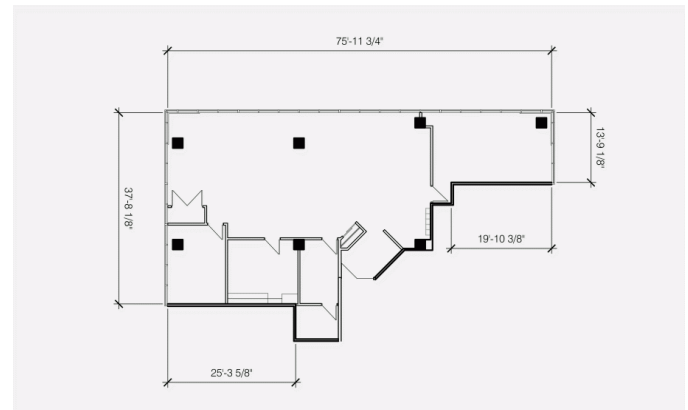


**T** 418 681-6300 #2411  
**E** LOCATIONQUEBEC@COMINAR.COM

**2600 Laurier Boulevard, Belle Cour Tower, Quebec, QC,  
G1V 4T3  
Suite #850**

### Space characteristics

AVAILABLE LEASING AREA	2,567 ft <sup>2</sup>
NUMBER OF FLOORS	1
FLOOR AREA	12,797 ft <sup>2</sup>
ADDITIONAL RENT	\$11.06 /ft <sup>2</sup>

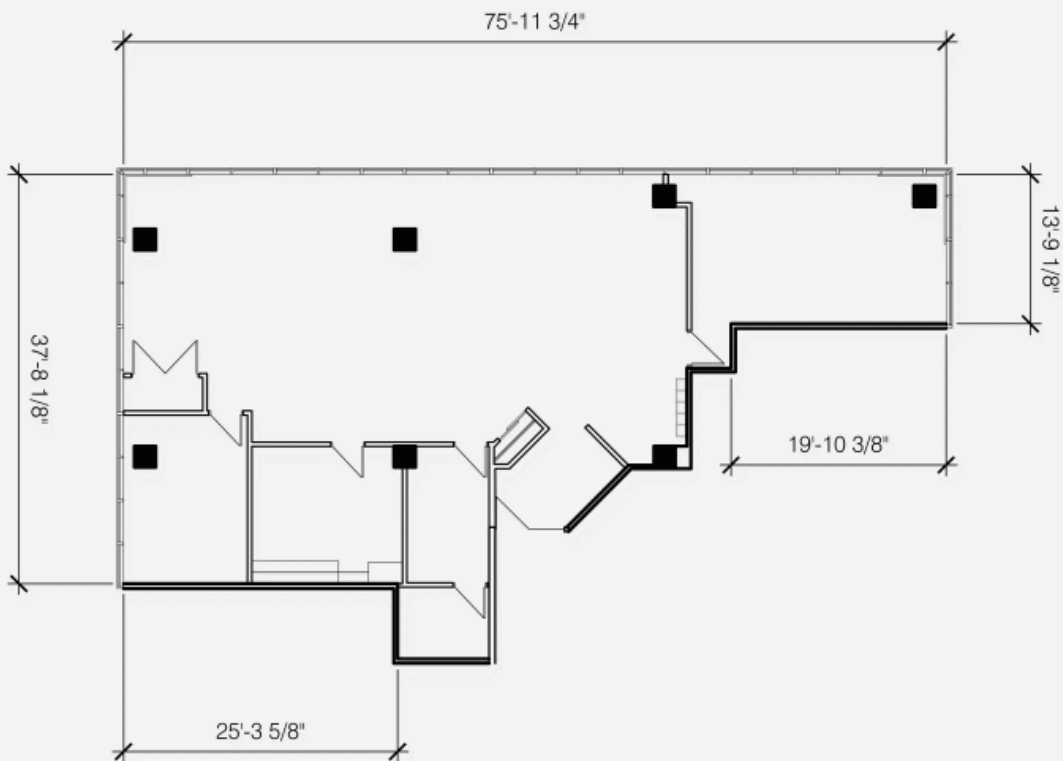


### Location Cominar

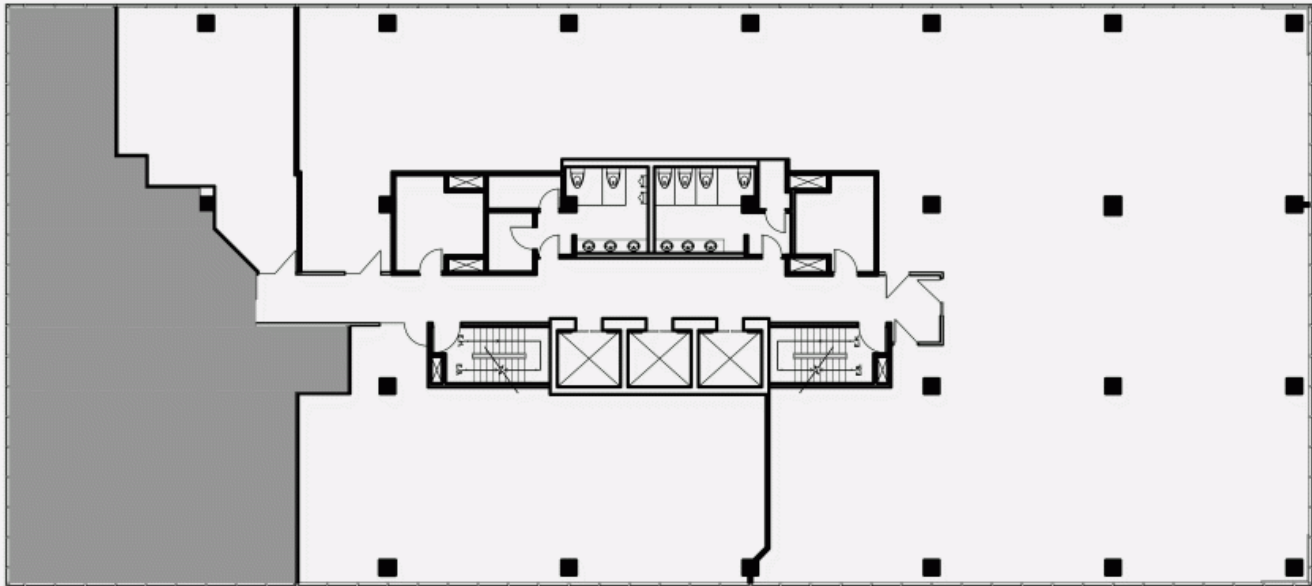


T 418 681-6300 #2411  
E LOCATIONQUEBEC@COMINAR.COM

DEVELOPMENT PLAN



LOCATION PLAN



**2600 Laurier Boulevard, Belle Cour Tower, Quebec, QC,  
G1V 4T3  
Suite #850**



Building Picture