

**19100-19180 Transcanadienne Road, Baie-D'Urfé, QC,
H9X 3S4
Suite #19180**

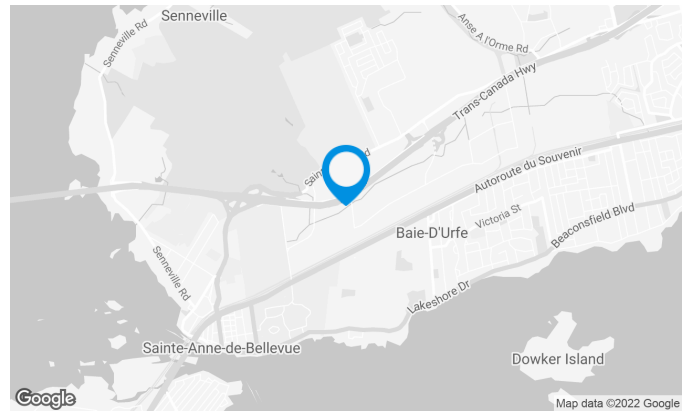
A multi tenant building with a dual purpose (office and industrial), very well located in the West Island.

Building characteristics

BUILDING AREA	25,209 sq. ft.
LAND AREA	137,650 sq. ft.
YEAR OF CONSTRUCTION	1987
NUMBER OF FLOORS	1
SPRINKLERS	Yes

BUILDING ACCESSIBILITY

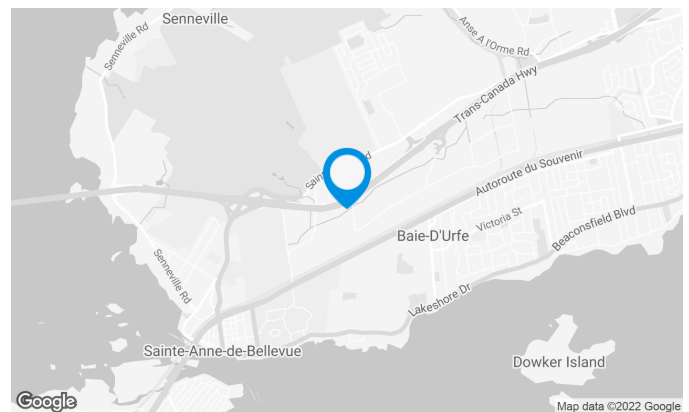
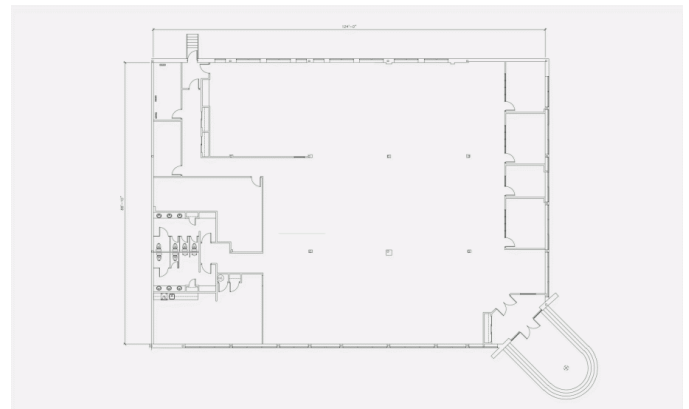
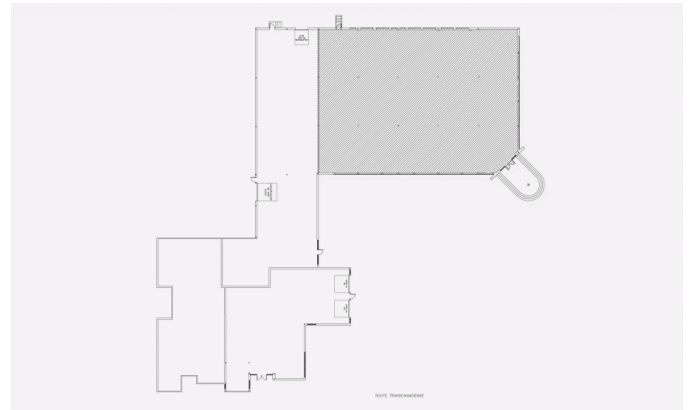
OUTDOOR PARKING	85
ROAD ACCESS	Highways 40 & 20
BUS	219
TRAIN STATION	Baie-d'Urfé



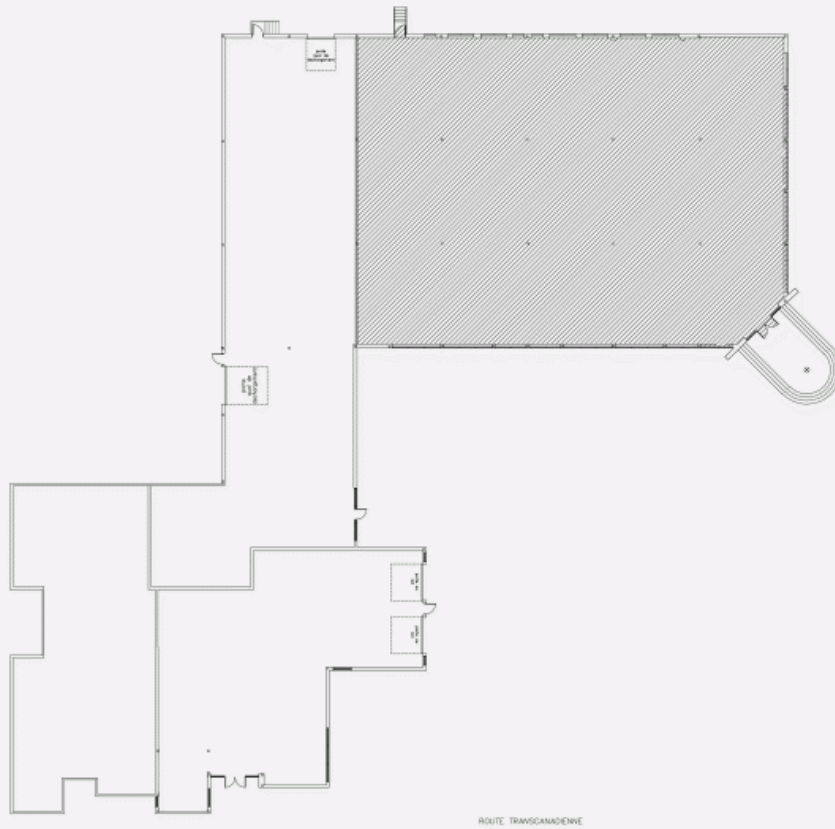
**19100-19180 Transcanadienne Road, Baie-D'Urfé, QC,
H9X 3S4
Suite #19180**

Space characteristics

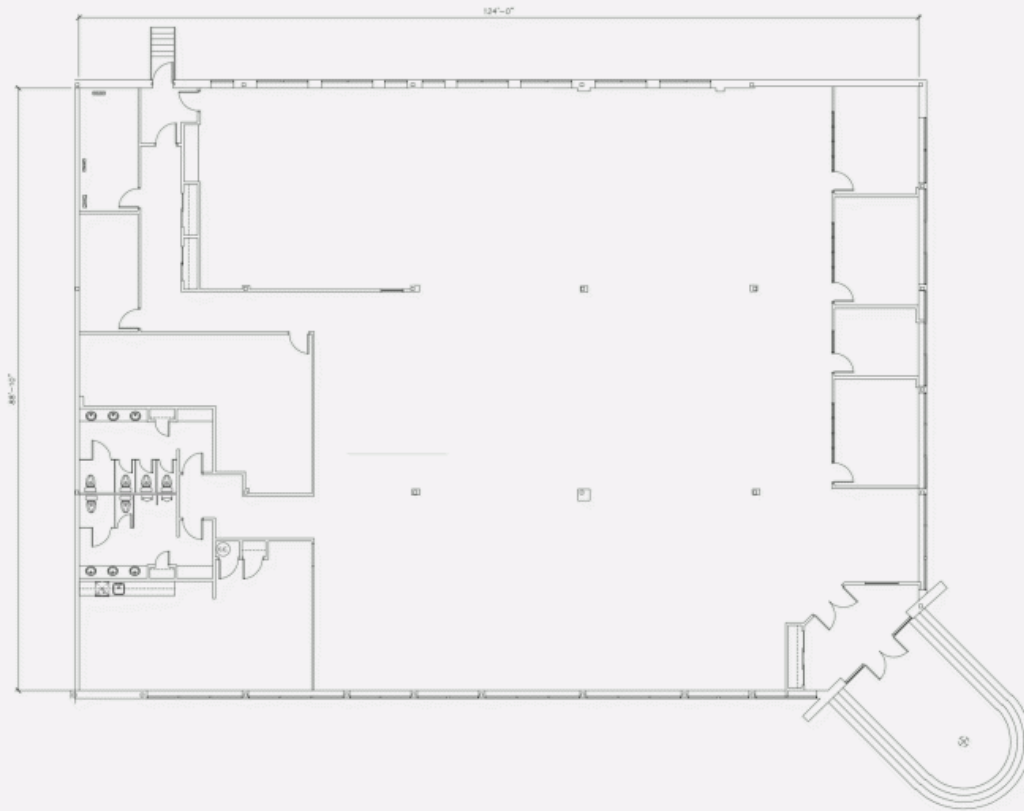
AVAILABLE LEASING AREA	11,246 sq. ft.
AVAILABILITY	Immediate
NUMBER OF FLOORS	1
FLOOR AREA	25,209 sq. ft.
ADDITIONAL RENT	\$5.37 /sq. ft.



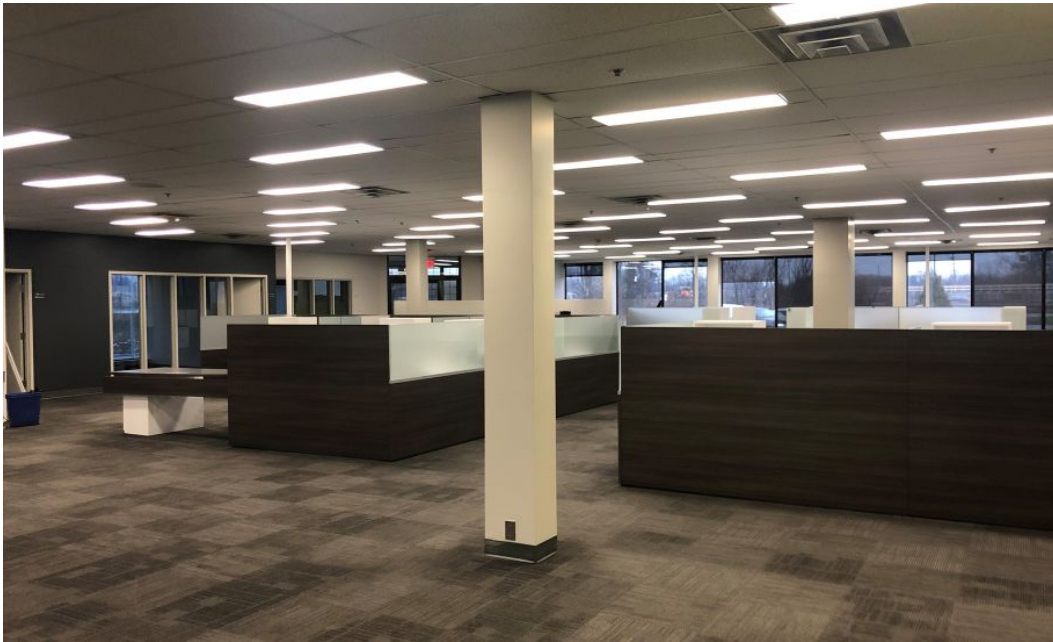
LOCATION PLAN



LAYOUT PLAN



**19100-19180 Transcanadienne Road, Baie-D'Urfé, QC,
H9X 3S4
Suite #19180**



**19100-19180 Transcanadienne Road, Baie-D'Urfé, QC,
H9X 3S4
Suite #19180**



AVAILABLE SPACES / OFFICE /

**19100-19180 Transcanadienne Road, Baie-D'Urfé, QC,
H9X 3S4
Suite #19180**

