

# 1255 to 1267 Charest Boulevard West, Quebec, QC, G1N 2C9

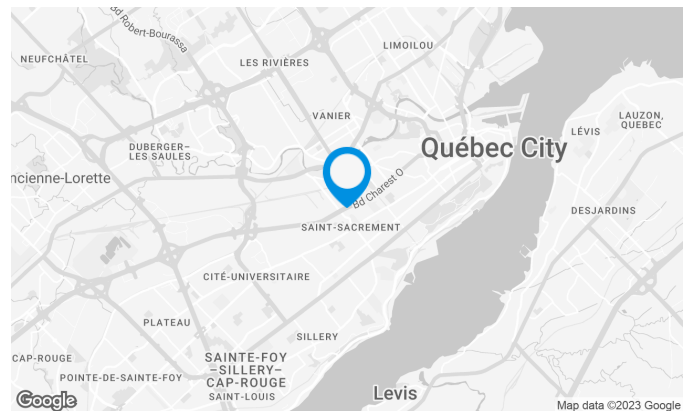
## Suite #1120

### Building characteristics

TOTAL LEASING AREA	142,000 sq. ft.
BUILDING AREA	142,434 sq. ft.
LAND AREA	147,123 sq. ft.
YEAR OF RENOVATION	2002
NUMBER OF FLOORS	12
ASCENCEURS	3
SPRINKLERS	Yes
SECURITY	Independent alarm system for each tenant.
BUILDING SERVICES	1 door to the ground Free gym access

### BUILDING ACCESSIBILITY

INDOOR PARKING	140
OUTDOOR PARKING	325
ROAD ACCESS	Located at the intersection of Charest highway and the Saint-Sacrement avenue.
BUS	18, 29, 214, 218, 283



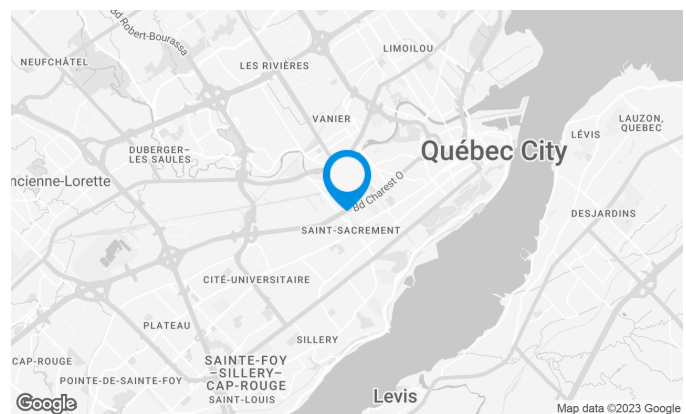
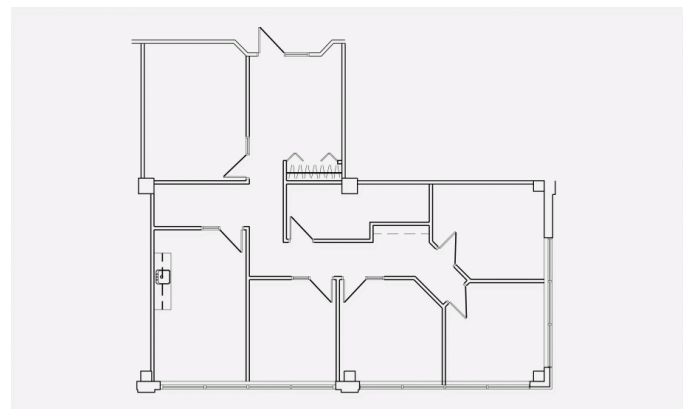
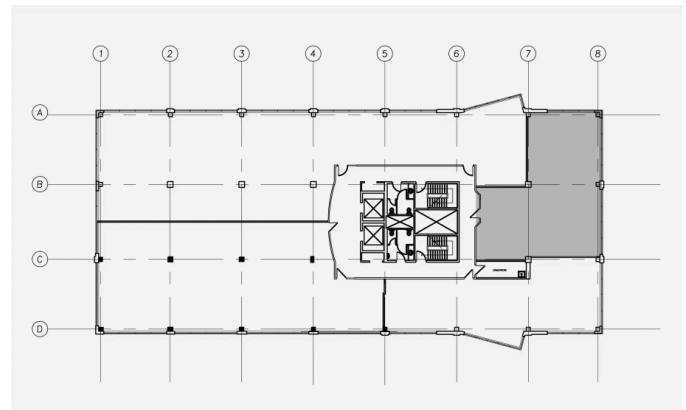
### Location Cominar



T 418 681-6300 #2418  
E LOCATIONQUEBEC@COMINAR.COM

### Space characteristics

AVAILABLE LEASING AREA	1,835 sq. ft.
NUMBER OF FLOORS	1
FLOOR AREA	11,145 sq. ft.

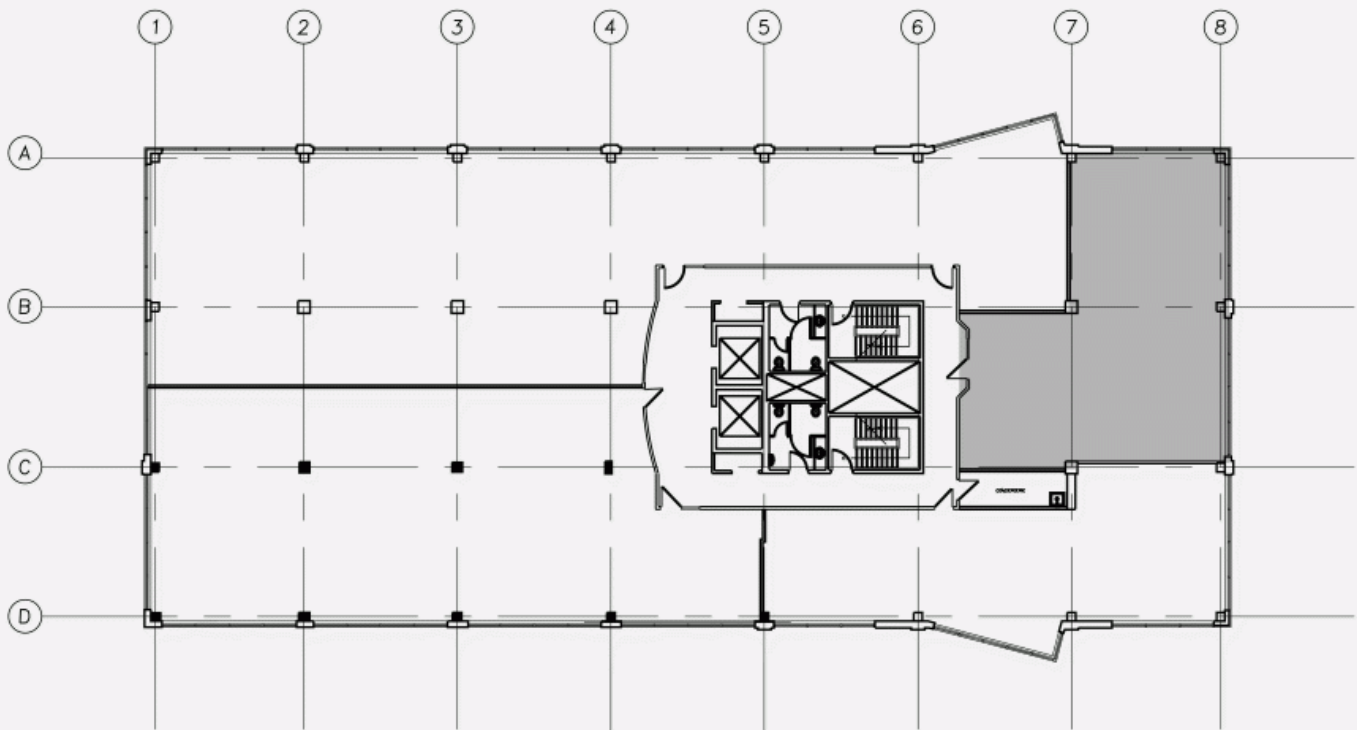


### Location Cominar

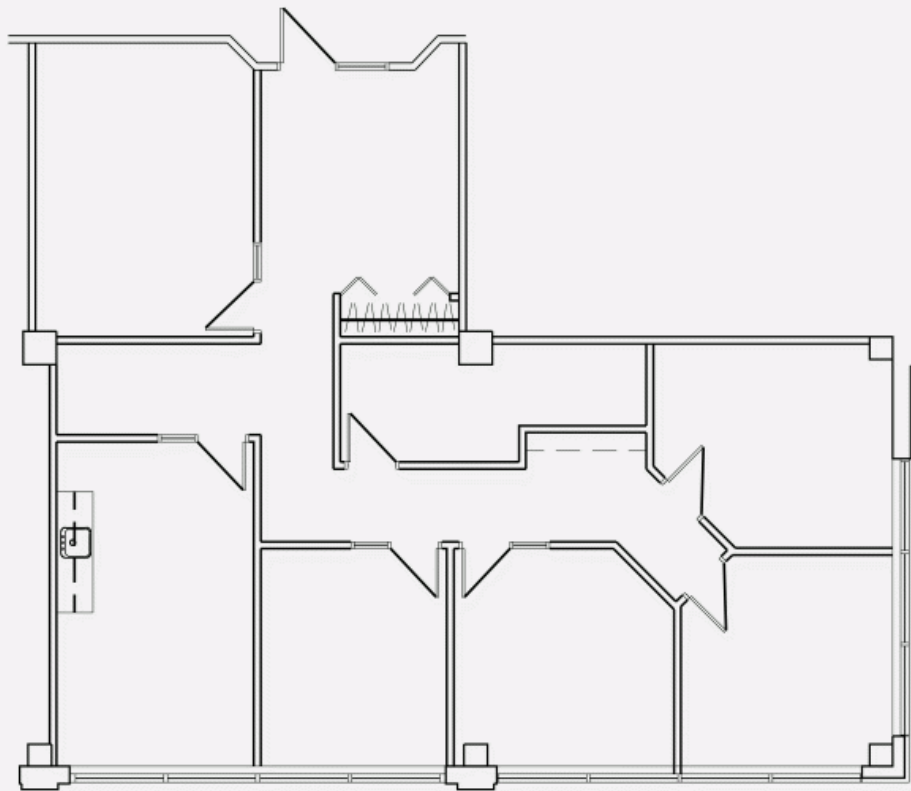


T 418 681-6300 #2418  
E LOCATIONQUEBEC@COMINAR.COM

PLAN - 1



PLAN - 2



**1255 to 1267 Charest Boulevard West, Quebec, QC, G1N  
2C9  
Suite #1120**

