

# 1415 to 1531 Berlier Street, Laval, QC, H7L 3Z1

## Suite #1451

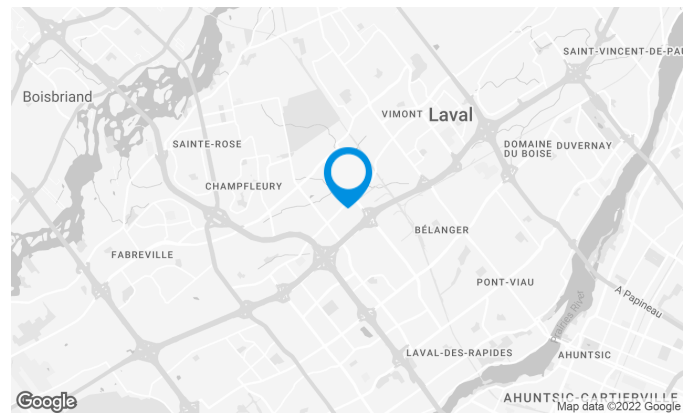
Located in the heart of Laval Center industrial park with easy access to all major highways.

### Building characteristics

BUILDING AREA	70,226 sq. ft.
LAND AREA	141,754 sq. ft.
YEAR OF RENOVATION	2002
YEAR OF CONSTRUCTION	1981
NUMBER OF FLOORS	2
SPRINKLERS	Yes

### BUILDING ACCESSIBILITY

OUTDOOR PARKING	145
ROAD ACCESS	Highway 440 and Industrial Boulevard
BUS	37
TRAIN STATION	Vimont Station



# 1415 to 1531 Berlier Street, Laval, QC, H7L 3Z1

## Suite #1451

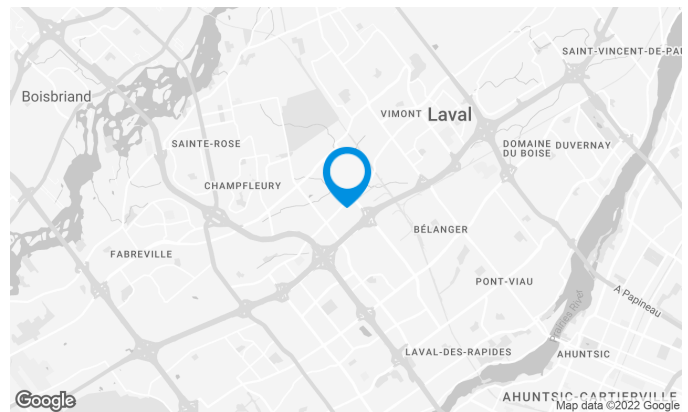
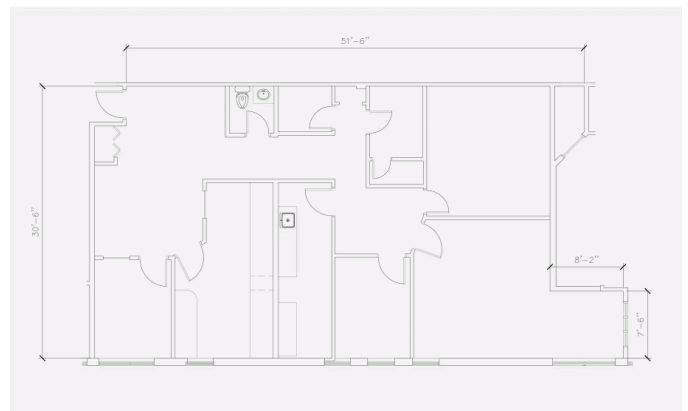
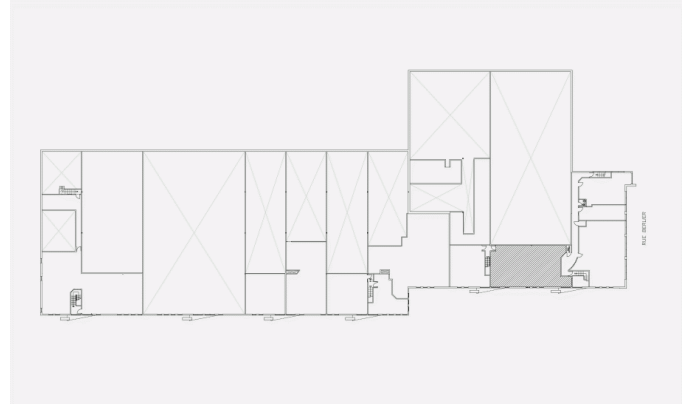
### Space characteristics

AVAILABLE LEASING AREA 1,730 sq. ft.

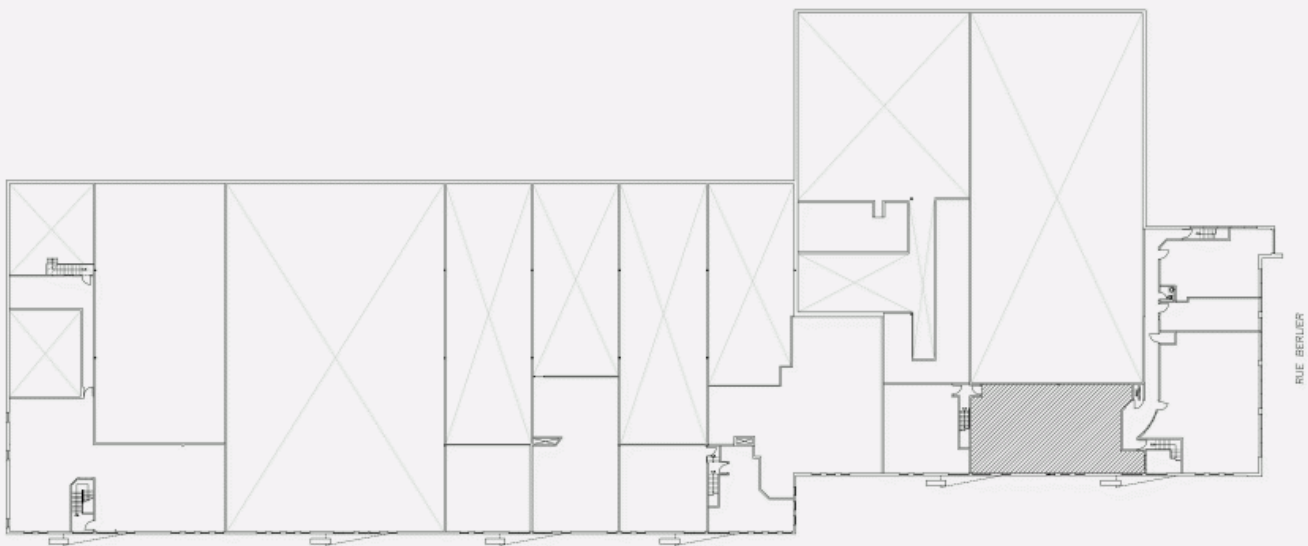
AVAILABILITY Immediate

NUMBER OF FLOORS 1

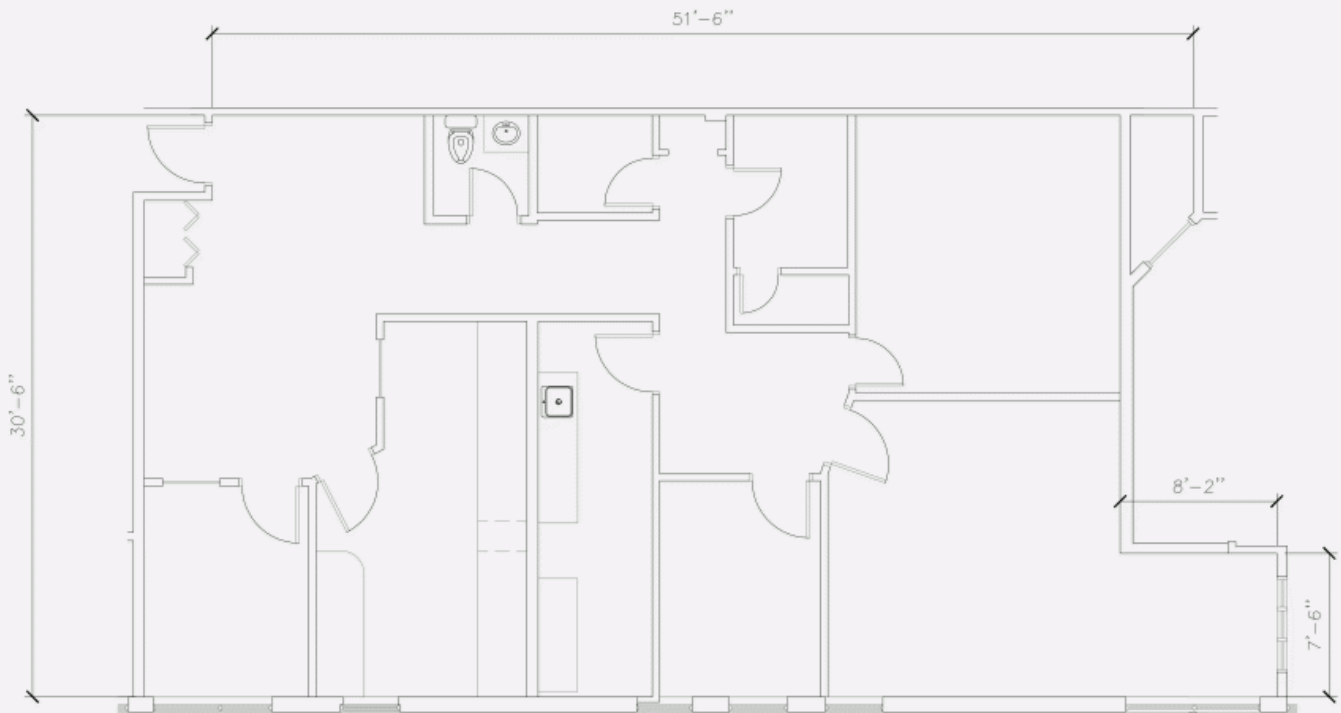
FLOOR AREA 9,855 sq. ft.



LOCATION PLAN



LAYOUT PLAN



**1415 to 1531 Berlier Street, Laval, QC, H7L 3Z1**  
**Suite #1451**

