

5055 Lévy Street, Saint-Laurent, QC, H4R 2N9

Suite #5055B

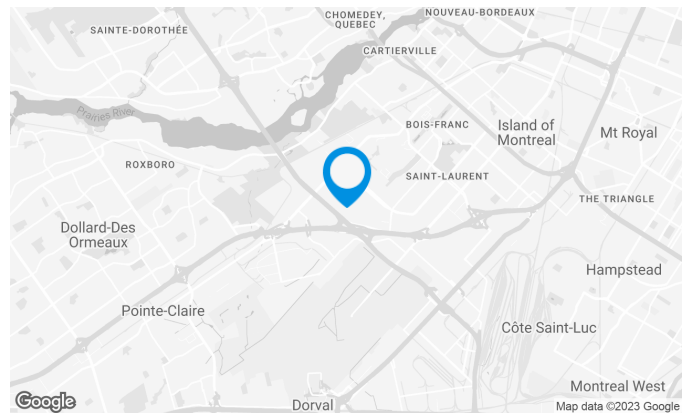
Located at the intersection of Lévy Street and Pitfield Boulevard. Close to the intersection of Highways 13 and 40.

Building characteristics

TOTAL LEASING AREA	60,666 sq. ft.
LAND AREA	211,449 sq. ft.
YEAR OF RENOVATION	1990
YEAR OF CONSTRUCTION	1989
NUMBER OF FLOORS	2
OPTICAL FIBER	Yes
HVAC HOURS	8 am to 18 pm (Monday to Friday)
SECURITY	Card system and security camera

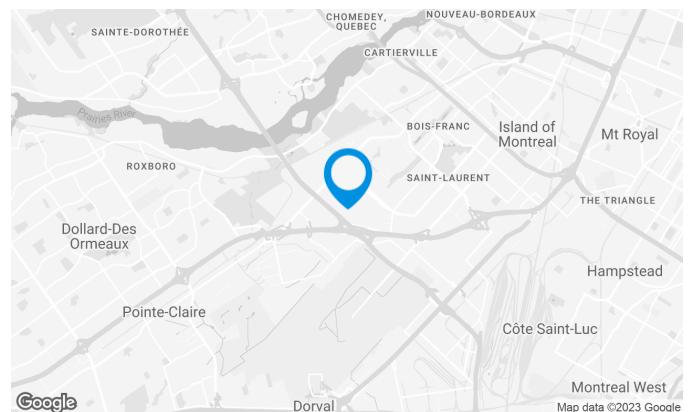
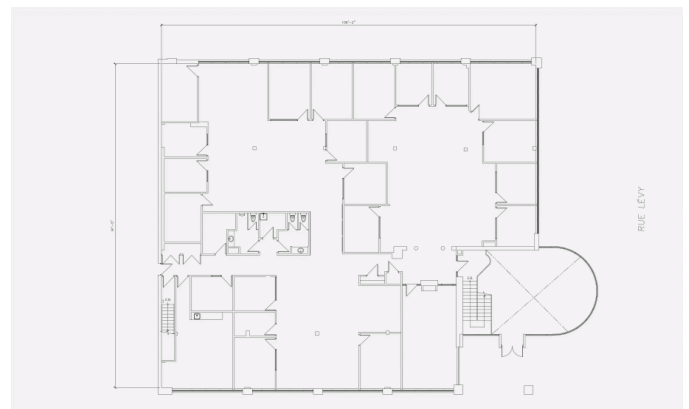
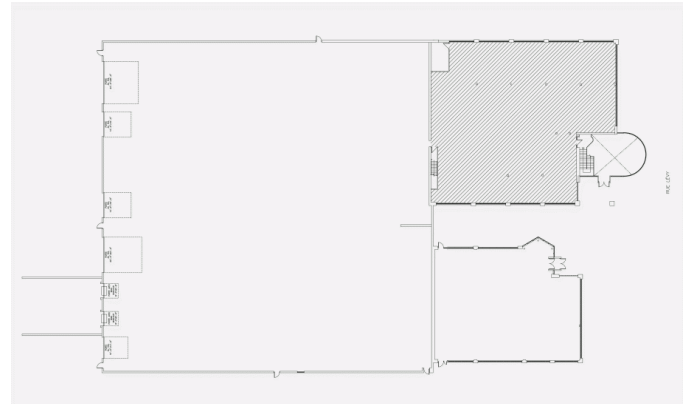
BUILDING ACCESSIBILITY

OUTDOOR PARKING	110
ROAD ACCESS	Highways 13 and 40
BUS	70

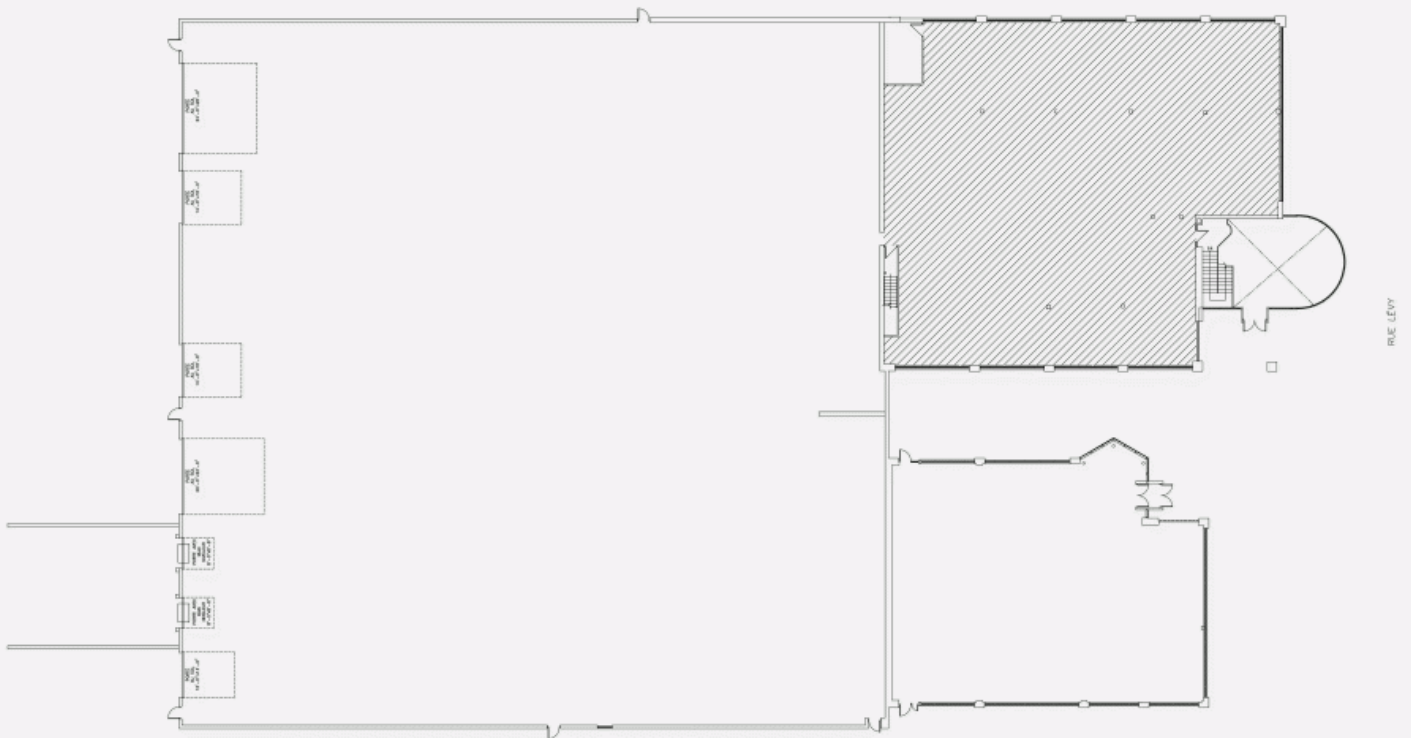


Space characteristics

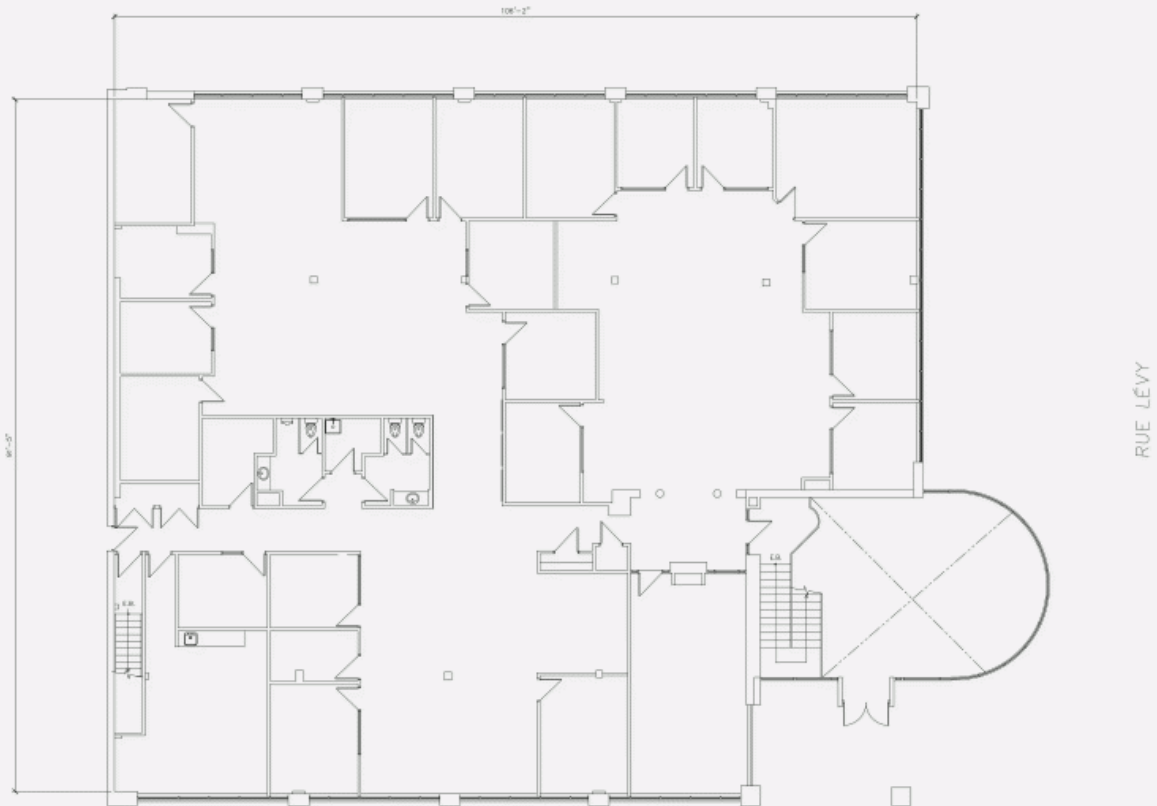
AVAILABLE LEASING AREA	10,306 sq. ft.
AVAILABILITY	Immediate
NUMBER OF FLOORS	1
FLOOR AREA	10,306 sq. ft.
ADDITIONAL RENT	\$4.66 /sq. ft.
COMMENTS / NOTES	Energy meter



LOCATION PLAN



LAYOUT PLAN



5055 Lévy Street, Saint-Laurent, QC, H4R 2N9
Suite #5055B

