

7075 Place Robert-Joncas, Saint-Laurent, QC, H4M 2Z2

Suite #200

Among the many perks of the property are a prime location near numerous amenities, easy access by car and public transit, and highly competitive rental rates. But most of all, it gives you flexibility.

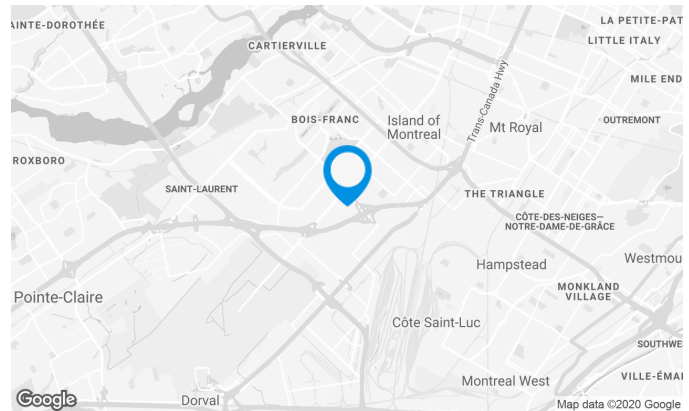
Create a work environment that is pleasant and productive, all at an affordable price. You can configure your offices and storage facilities to suit your needs. Our years of architects and designers will do everything to exceed your expectations.

This will allow you to create a productive and pleasant working environment at very reasonable costs. Located near major arteries, 10 minutes from Montreal-Trudeau International Airport and within walking distance of several bus and service lines, Place Robert-Joncas is a prime location for both your employees and your customers.



Building characteristics

TOTAL LEASING AREA	218,611 ft ²
LAND AREA	439,498 ft ²
YEAR OF RENOVATION	2003
YEAR OF CONSTRUCTION	1975
NUMBER OF FLOORS	2
ASCENCEURS	1
SPRINKLERS	Yes
SECURITY	Access cards



Owen Paek

LEASE AGENT
LEASING - INDUSTRIAL, MONTREAL AREA

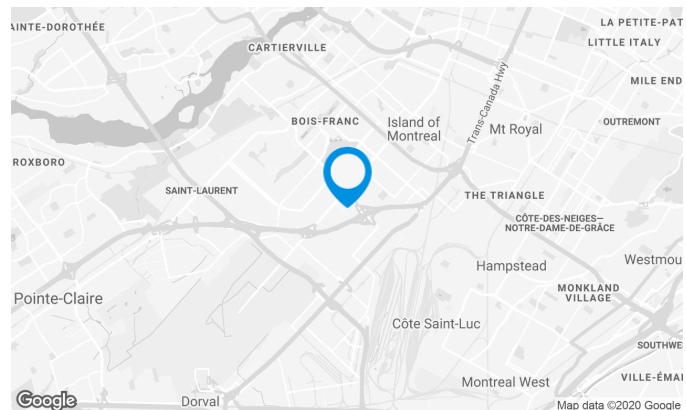
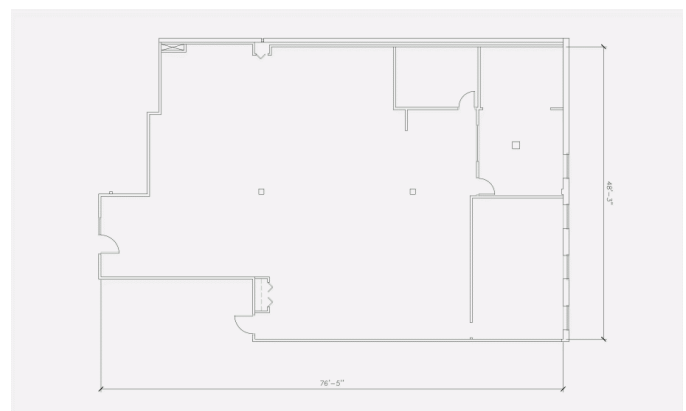
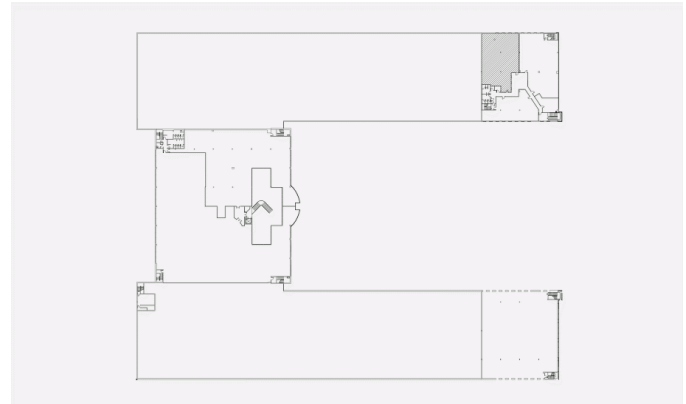
T 514 737-3344 #3257
C 514 709-3830
E OWEN.PAEK@COMINAR.COM

BUILDING ACCESSIBILITY

OUTDOOR PARKING	396
ROAD ACCESS	Côte-Vertu Blvd, Cavendish Blvd, Highways 13, 15, 40 and 520
BUS	470, 177, 196, 216,409
METRO STATION	Côte-Vertu

Space characteristics

AVAILABLE LEASING AREA	3,620 ft ²
AVAILABILITY	Immediate
NUMBER OF FLOORS	1
FLOOR AREA	39,785 ft ²
ADDITIONAL RENT	\$7.32 /ft ²



Owen Paek

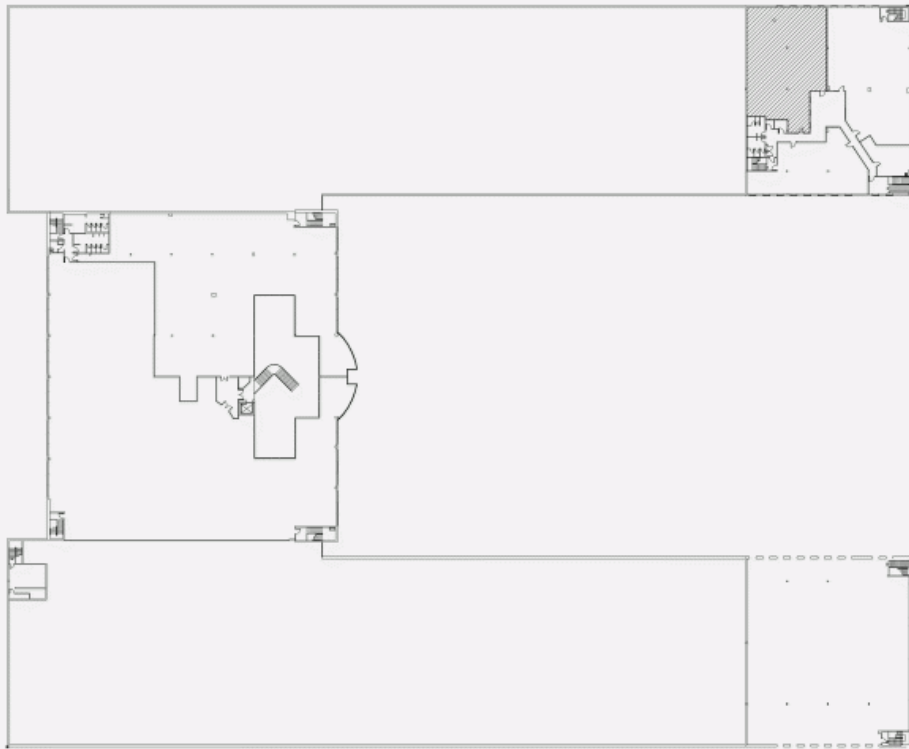
LEASE AGENT
LEASING - INDUSTRIAL, MONTREAL AREA

T 514 737-3344 #3257

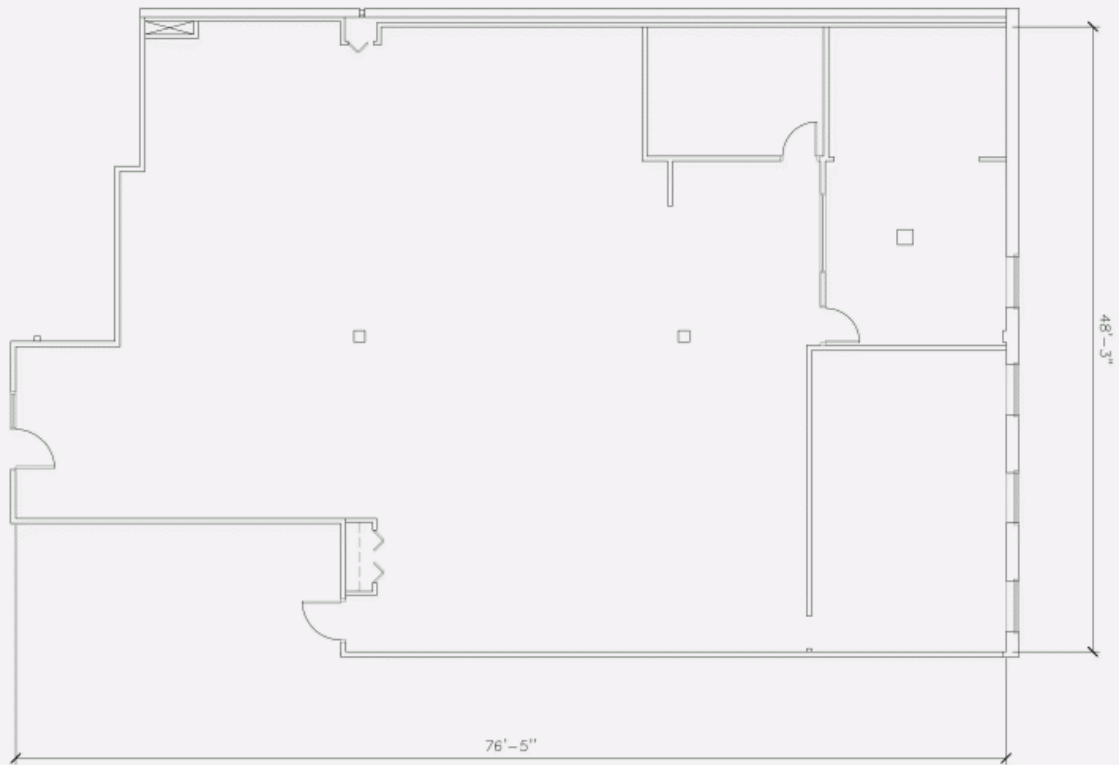
C 514 709-3830

E OWEN.PAEK@COMINAR.COM

LOCATION PLAN



LAYOUT PLAN



7075 Place Robert-Joncas, Saint-Laurent, QC, H4M 2Z2
Suite #200

