

Among the many perks of the property are a prime location near numerous amenities, easy access by car and public transit, and highly competitive rental rates. But most of all, it gives you flexibility.

Create a work environment that is pleasant and productive, all at an affordable price. You can configure your offices and storage facilities to suit your needs. Our years of architects and designers will do everything to exceed your expectations.

This will allow you to create a productive and pleasant working environment at very reasonable costs. Located near major arteries, 10 minutes from Montreal-Trudeau International Airport and within walking distance of several bus and service lines, Place Robert-Joncas is a prime location for both your employees and your customers.

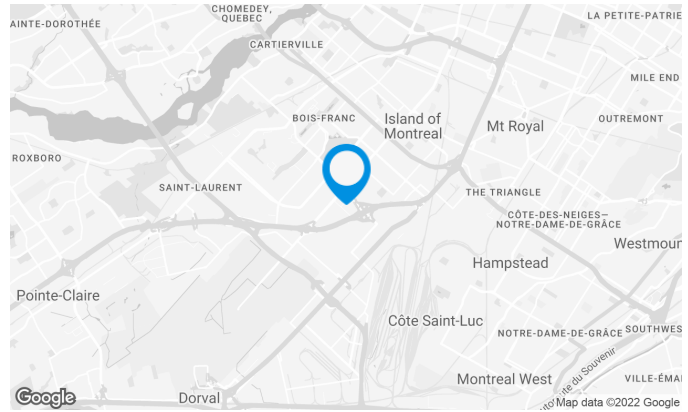


Building characteristics

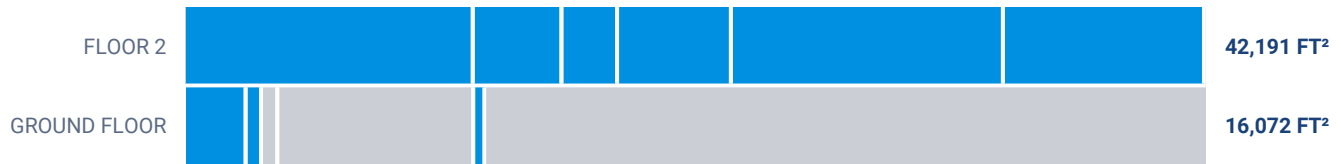
TOTAL LEASING AREA	218,611 ft ²
LAND AREA	439,498 ft ²
YEAR OF RENOVATION	2003
YEAR OF CONSTRUCTION	1975
NUMBER OF FLOORS	2
ELEVATORS	1
SPRINKLERS	Yes
SECURITY	Access cards

BUILDING ACCESSIBILITY

OUTDOOR PARKING	396
ROAD ACCESS	Côte-Vertu Blvd, Cavendish Blvd, Highways 13, 15, 40 and 520
BUS	470, 177, 196, 216, 409
METRO STATION	Côte-Vertu



Available leasing areas from 2,052 ft² to 23,019 ft²

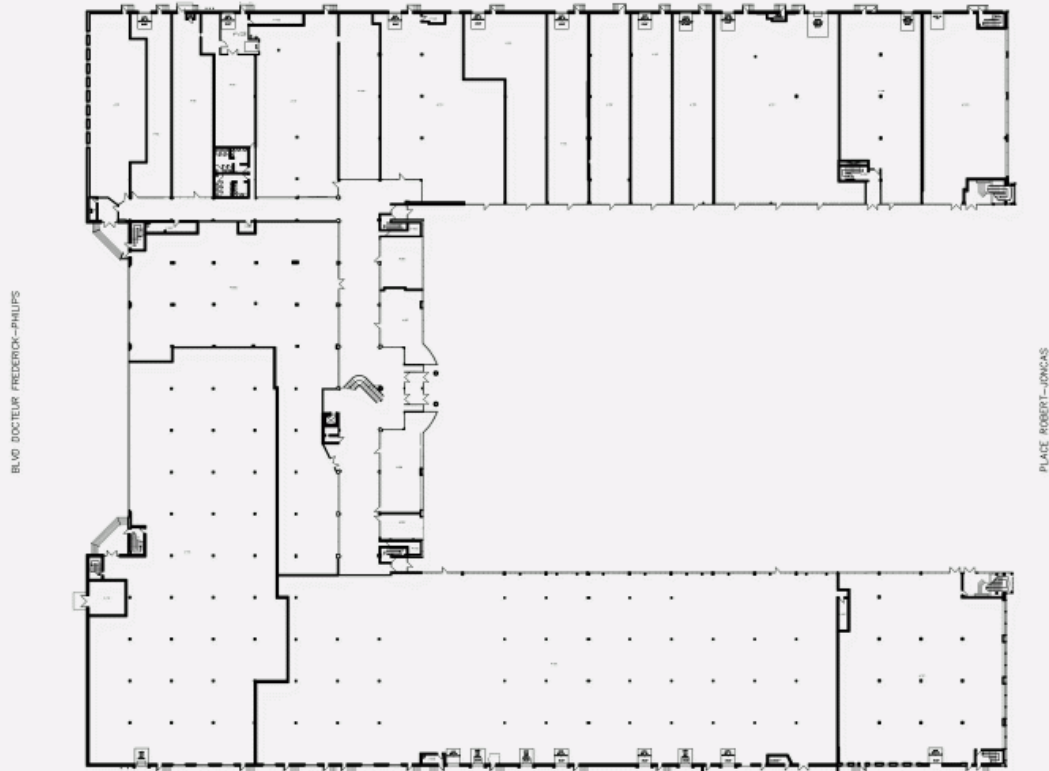


List of available offices

SUITE	FLOOR	AVAILABILITY	AREA
Suite #110-95G	RDC		36,497 ft ²
Suite #100M-95G	RDC	Immediate	23,019 ft ²
Suite #97-99	RDC	Immediate	2,052 ft ²
Suite #95G	RDC	30 jours	11,130 ft ²
Suite #105	RDC	30 jours	2,890 ft ²
Suite #125	RDC		3,019 ft ²
Suite #200-225-225R	2	Immediate	8,332 ft ²
Suite #228	2	Immediate	11,273 ft ²
Suite #225-225R	2	Immediate	4,712 ft ²
Suite #100M	2	Immediate	11,889 ft ²
Suite #200	2	Immediate	3,677 ft ²
Suite #250	2	Immediate	2,308 ft ²



RDC PLAN



FLOOR 2 PLAN

