

1975 Hymus Boulevard, Dorval, QC, H9P 1J8

Suite #205

Industrial building with on the second floor office space, well located in Dorval. Near to des Sources Boulevard, with a direct access to the Transcanadian Highway.

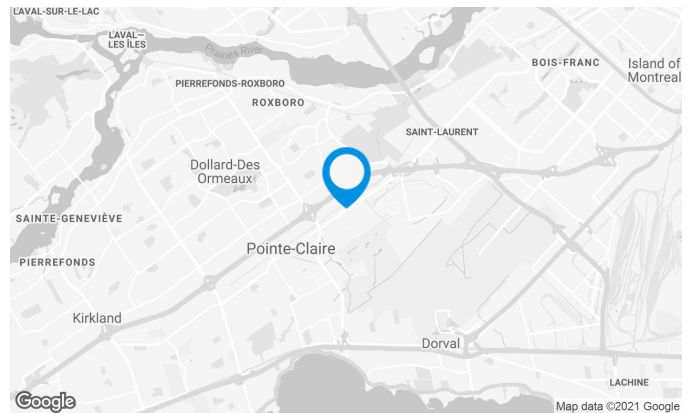
A large parking available as well as green space in front of the building with picnic tables for employees.

Building characteristics

TOTAL LEASING AREA	104,354 ft ²
BUILDING AREA	104,354 ft ²
LAND AREA	202,204 ft ²
YEAR OF CONSTRUCTION	1988
NUMBER OF FLOORS	2
SPRINKLERS	Yes

BUILDING ACCESSIBILITY

OUTDOOR PARKING	134
ROAD ACCESS	Trans-Canada Road (40) Des Sources Boulevard
BUS	225



Victoria Tenenboym

LEASING DIRECTOR
LEASING - INDUSTRIAL, MONTREAL AREA

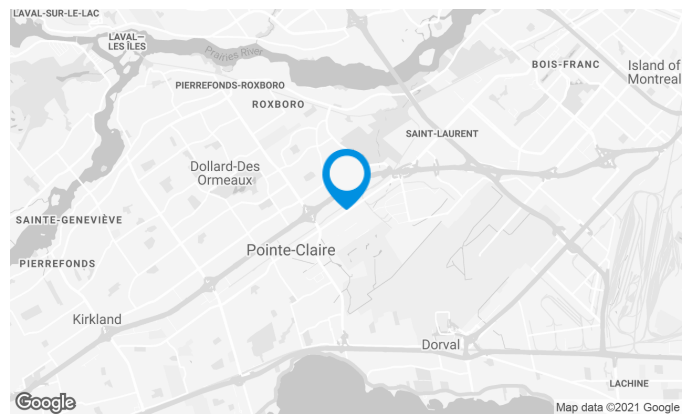
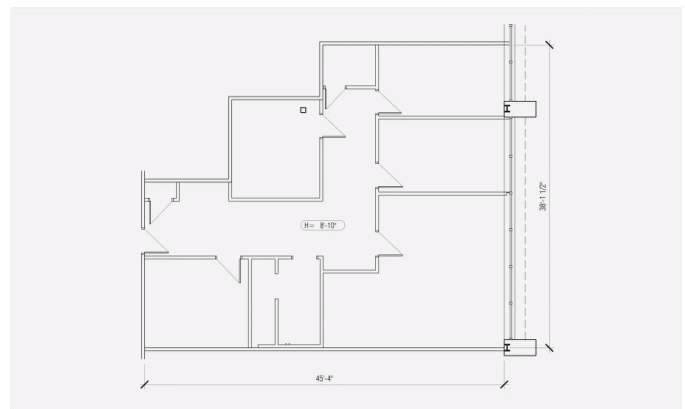
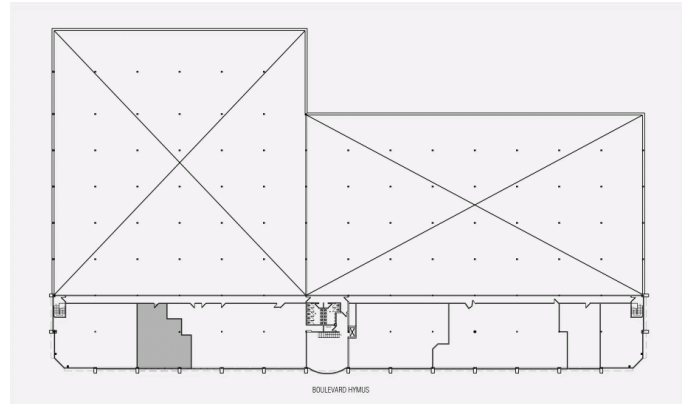
T 514 737-3344 #3218
C 514 894-6505
E VICTORIA.TENENBOYM@COMINAR.COM

1975 Hymus Boulevard, Dorval, QC, H9P 1J8
Suite #205



Space characteristics

AVAILABLE LEASING AREA	1,689 ft ²
AVAILABILITY	Immediate
NUMBER OF FLOORS	1
FLOOR AREA	20,359 ft ²
ADDITIONAL RENT	\$8.05 /ft ²
ENERGY	Included

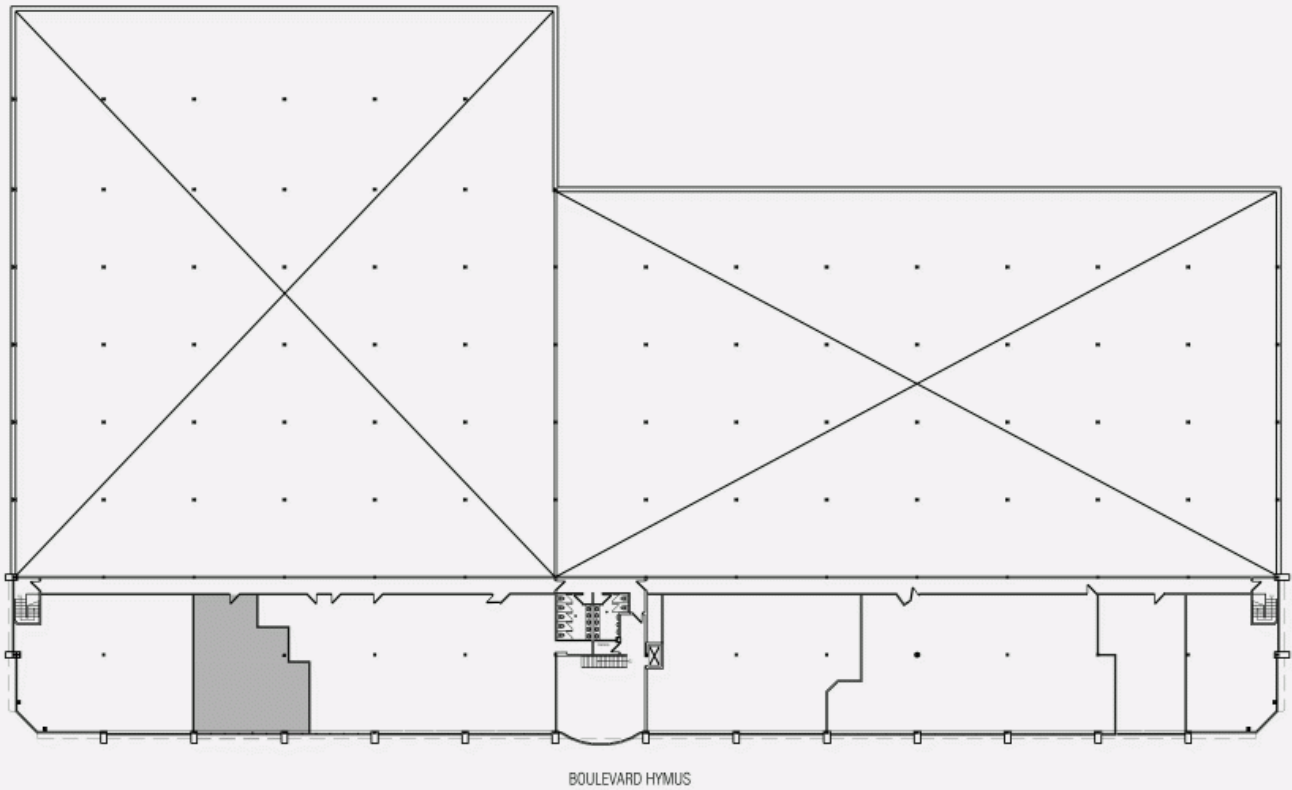


Victoria Tenenboym

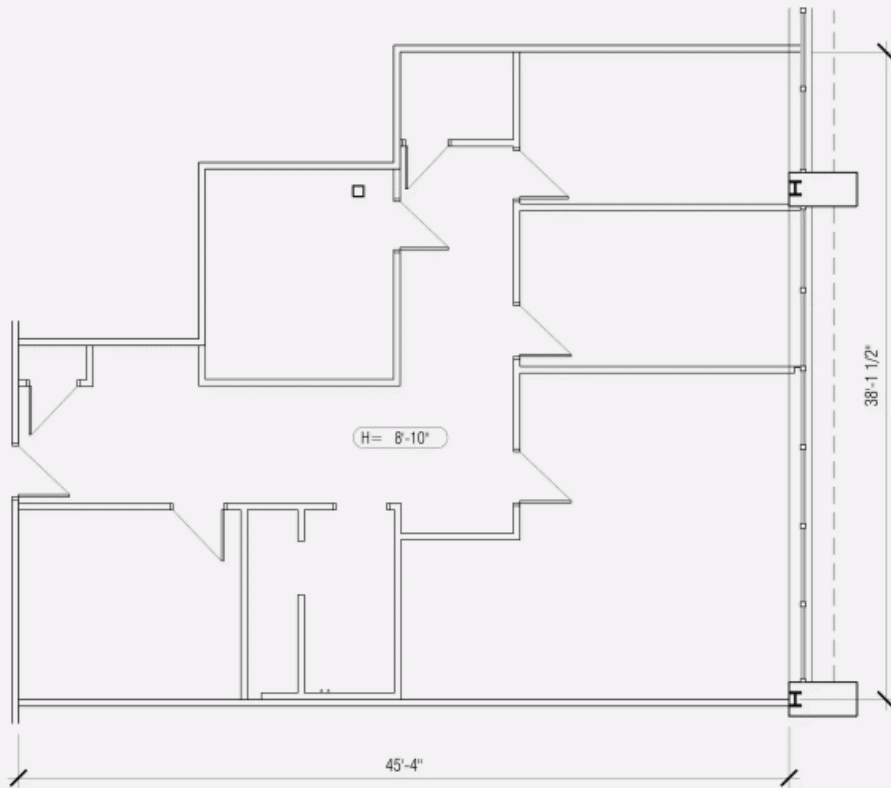
LEASING DIRECTOR
 LEASING - INDUSTRIAL, MONTREAL AREA

T 514 737-3344 #3218
C 514 894-6505
E VICTORIA.TENENBOYM@COMINAR.COM

LOCATION PLAN



LAYOUT PLAN



1975 Hymus Boulevard, Dorval, QC, H9P 1J8
Suite #205

