

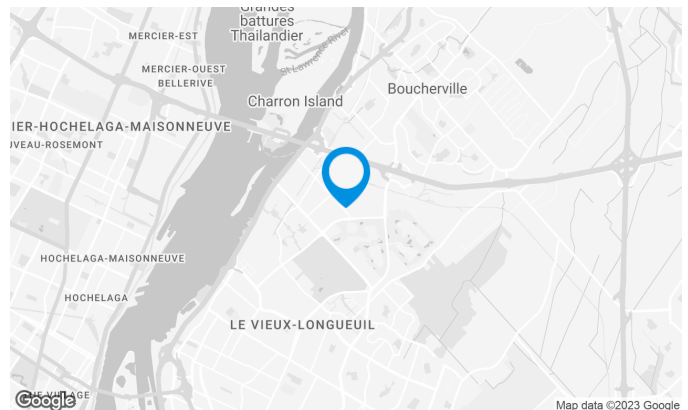
In the heart of Longueuil Industrial Park. Easy access to all major highways.

## Building characteristics

TOTAL LEASING AREA	81,973 sq. ft.
LAND AREA	234,457 sq. ft.
YEAR OF RENOVATION	2006
YEAR OF CONSTRUCTION	1994
NUMBER OF FLOORS	2
SPRINKLERS	Yes

## BUILDING ACCESSIBILITY

OUTDOOR PARKING	221
ROAD ACCESS	20 Highway, route 132
BUS	25



## Space characteristics

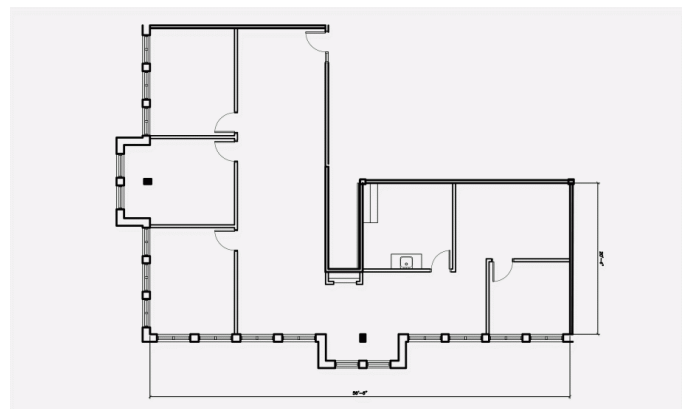
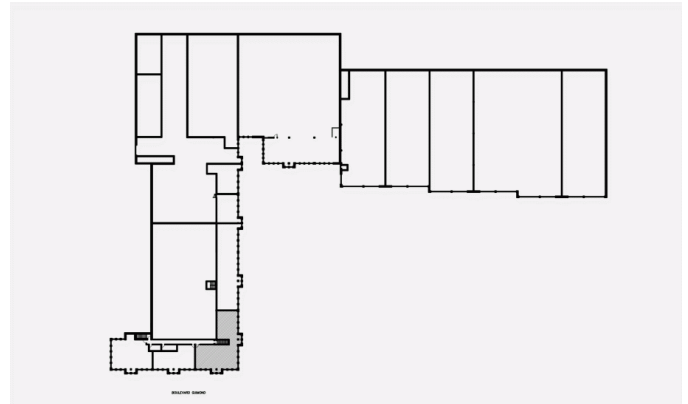
AVAILABLE LEASING AREA 1,702 sq. ft.

AVAILABILITY 60 jours

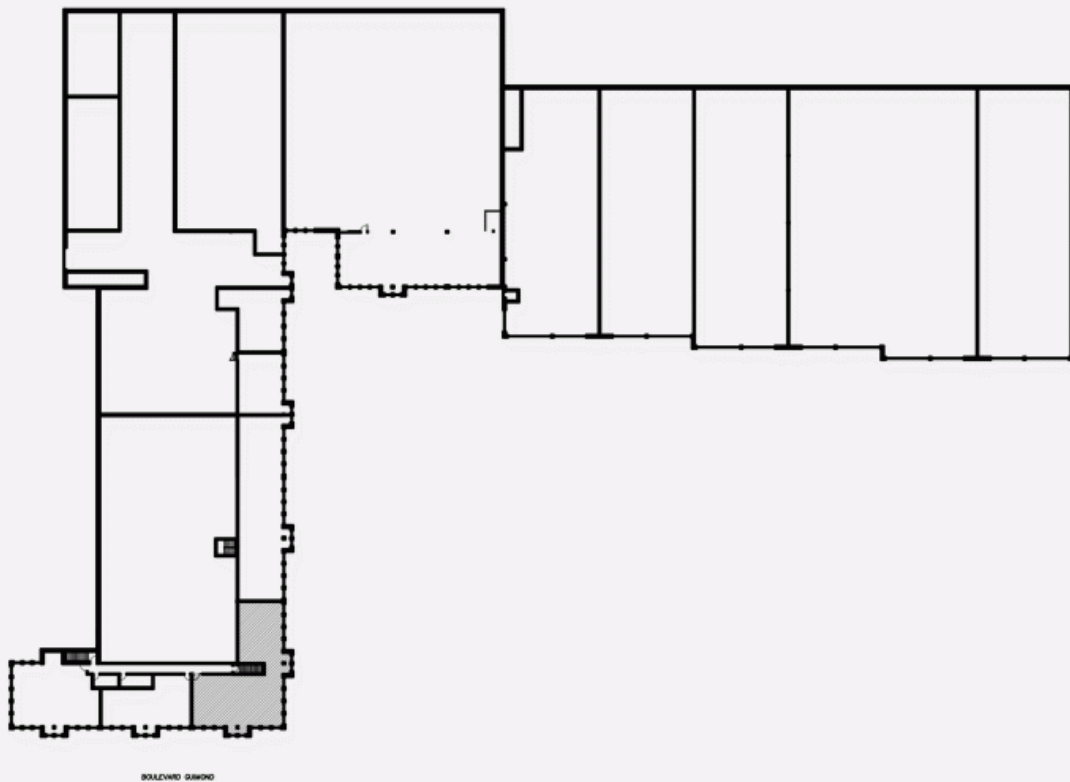
NUMBER OF FLOORS 1

FLOOR AREA 6,429 sq. ft.

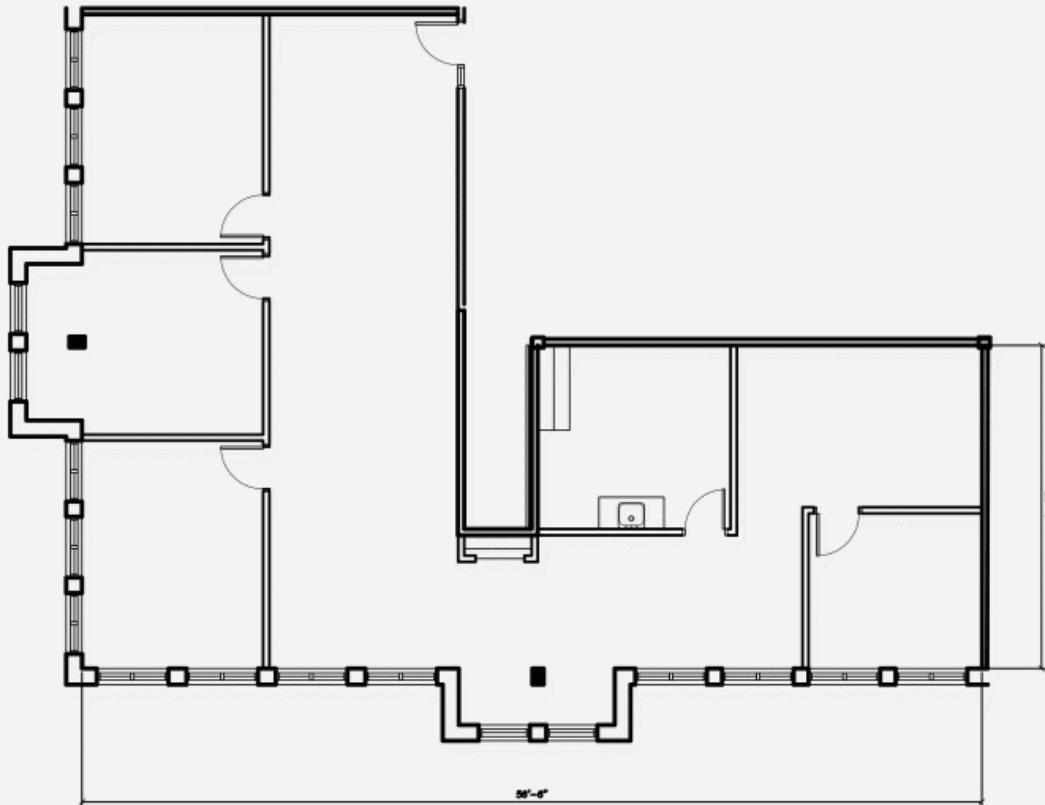
ENERGY Included



LOCATION PLAN



LAYOUT PLAN



**784 to 818 Guimond Boulevard, Longueuil, QC, J4G 1T5**  
**814 - Suite #200**

