

8552 to 8648 Pie-IX Boulevard, Montreal, QC, H1Z 4G2

Suite 8608-2

Large building with a dual purpose, office and industrial. Surrounded by many services, this building is a prime location, directly on Route 125 (Pie-IX Boulevard).

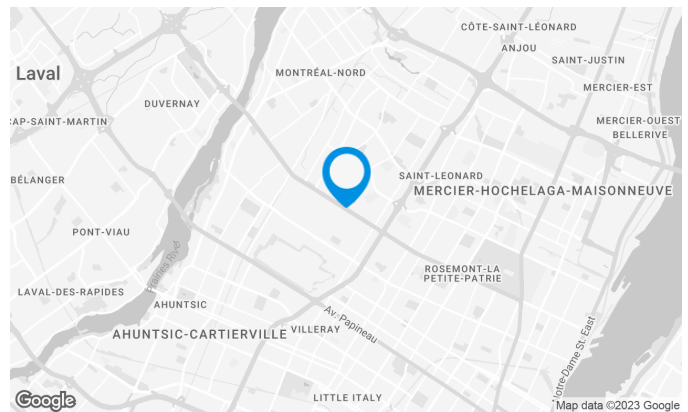
Services such as restaurants, gas stations and public transportation are accessible nearby.

Building characteristics

TOTAL LEASING AREA	147,629 sq. ft.
NUMBER OF FLOORS	2
SPRINKLERS	Yes

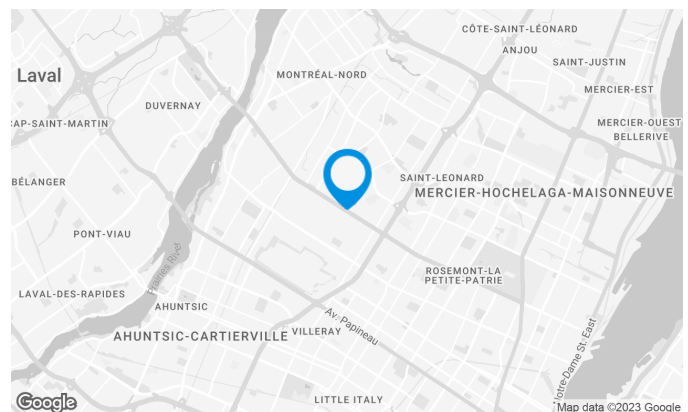
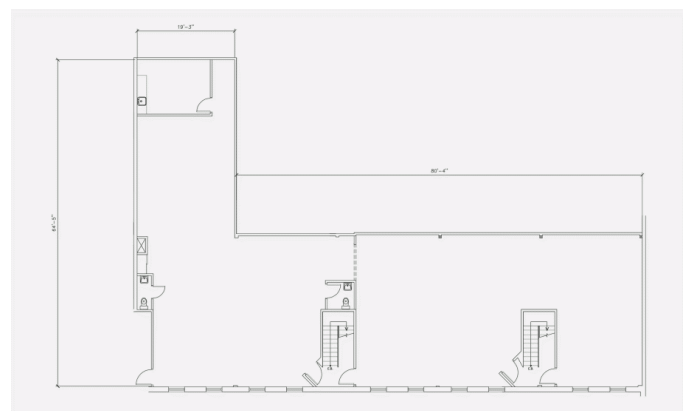
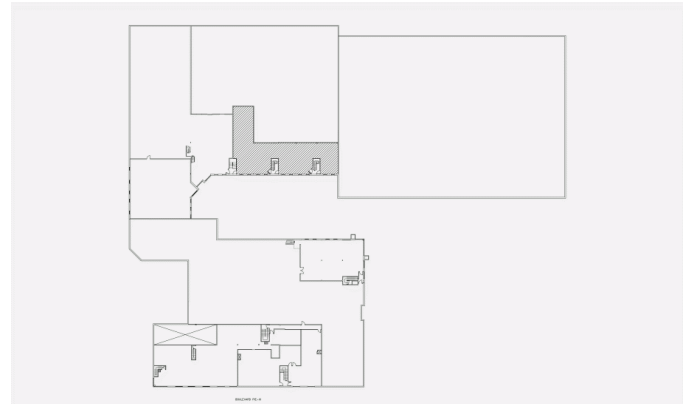
BUILDING ACCESSIBILITY

ROAD ACCESS	Pie-IX Boulevard (125), Robert Boulevard, Metropolitan Highway (40)
BUS	41, 139, 355, 439
TRAIN STATION	Station: Saint-Michel Montréal North

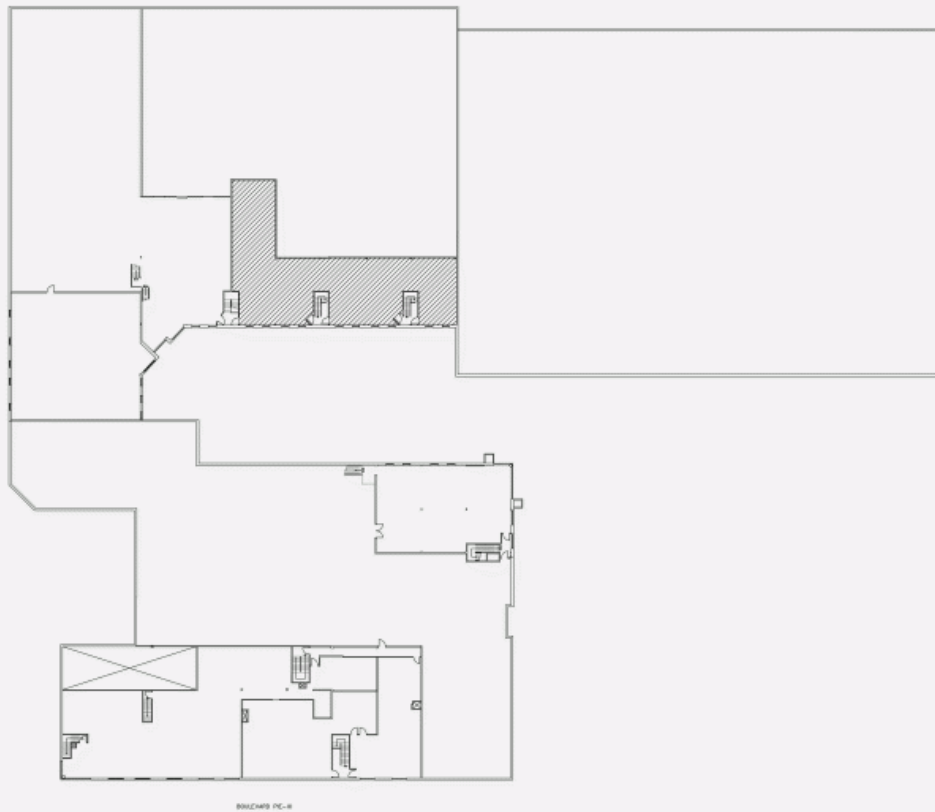


Space characteristics

AVAILABLE LEASING AREA	3,444 sq. ft.
AVAILABILITY	Immediate
FLOOR AREA	115,271 sq. ft.
ENERGY	Included
COMMENTS / NOTES	Office on 2nd floor. Energy included.

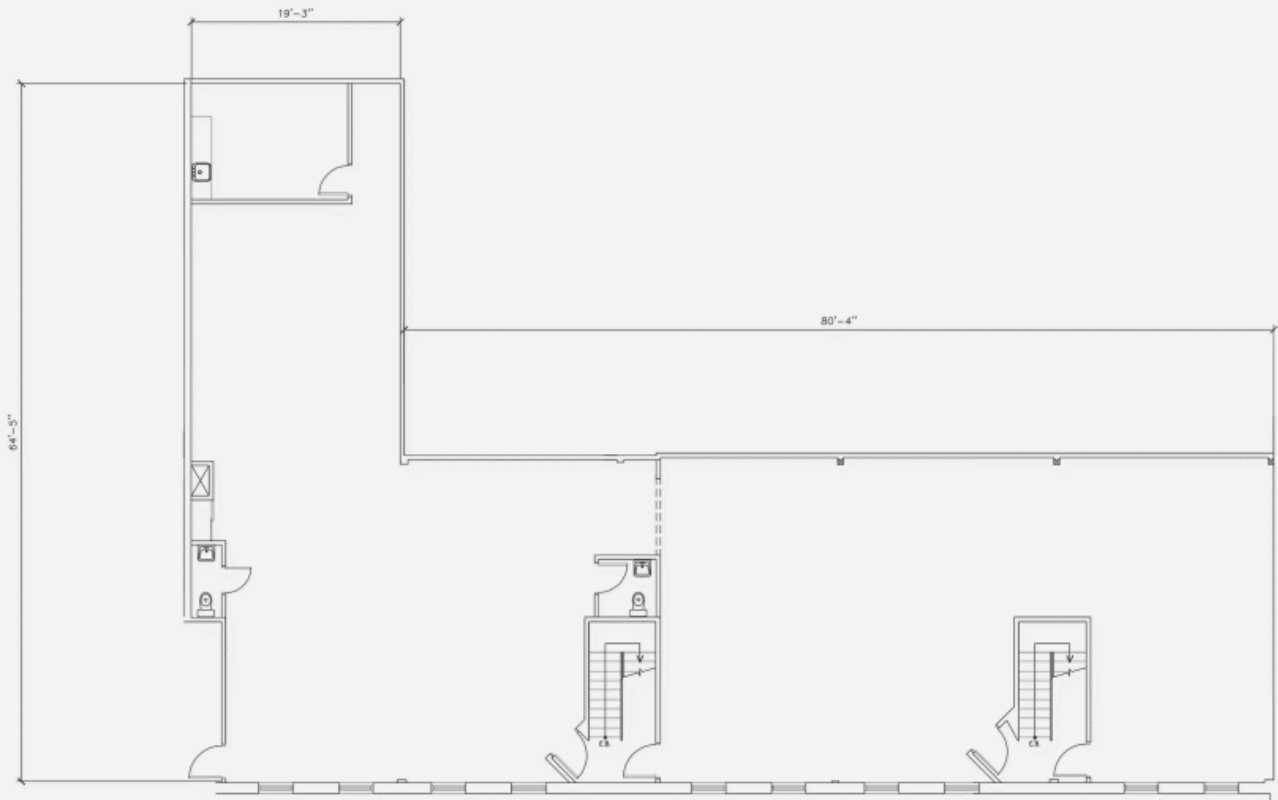


LOCATION PLAN



BIMBAUD P.C.®

LAYOUT PLAN



8552 to 8648 Pie-IX Boulevard, Montreal, QC, H1Z 4G2
Suite 8608-2

