

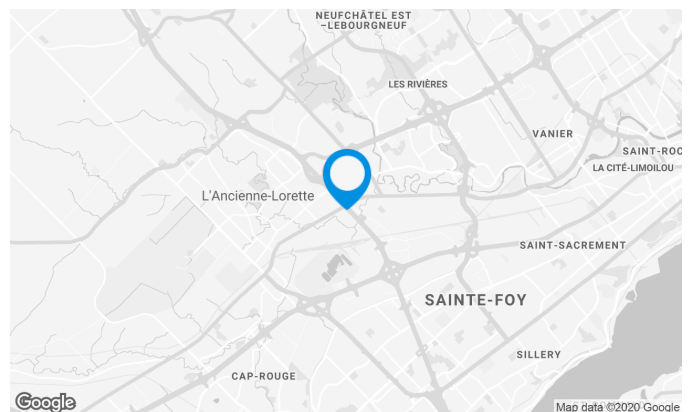
Building located in the Carrefour du Commerce industrial park.  
 Excellent accessibility and more than 325 outdoor parking spaces.  
 Restaurants and shops nearby.

## Building characteristics

TOTAL LEASING AREA	106,147 ft <sup>2</sup>
YEAR OF RENOVATION	1998
NUMBER OF FLOORS	2
ASCENCEURS	1
OPTICAL FIBER	Yes
SPRINKLERS	Yes
SECURITY	Card system

## BUILDING ACCESSIBILITY

OUTDOOR PARKING	325
ROAD ACCESS	Wilfrid-Hamel Boulevard / Henri IV Highway
BUS	88



## Location Cominar



**T** 418 681-6300 #2411  
**E** LOCATIONQUEBEC@COMINAR.COM

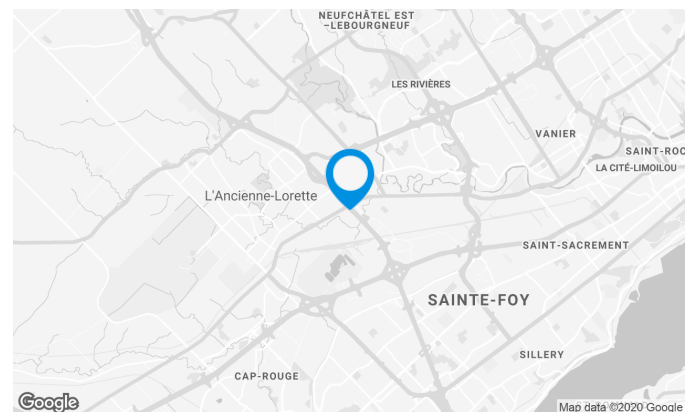
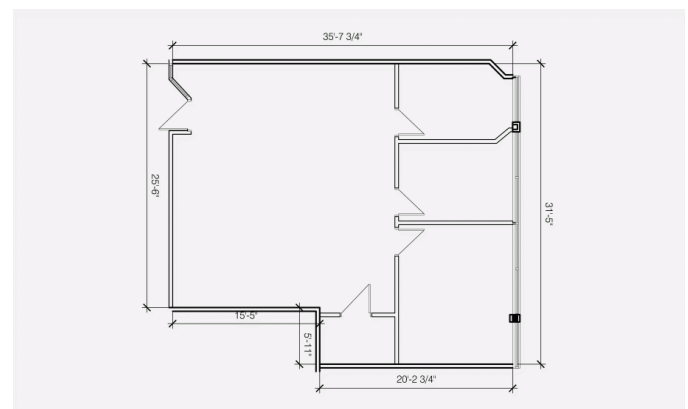
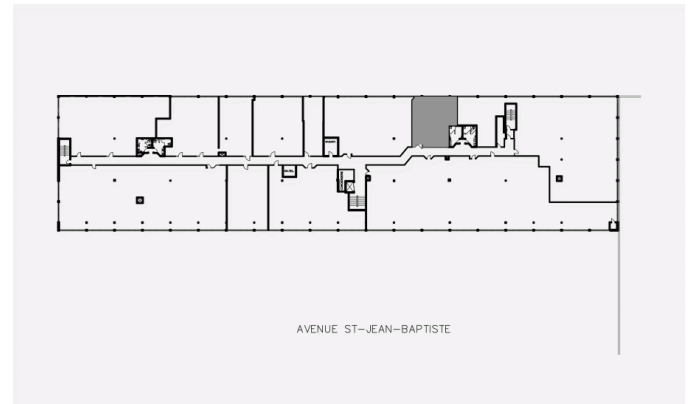
## Space characteristics

AVAILABLE LEASING AREA 1,173 ft<sup>2</sup>

AVAILABILITY June 2020

NUMBER OF FLOORS 1

FLOOR AREA 53,073 ft<sup>2</sup>



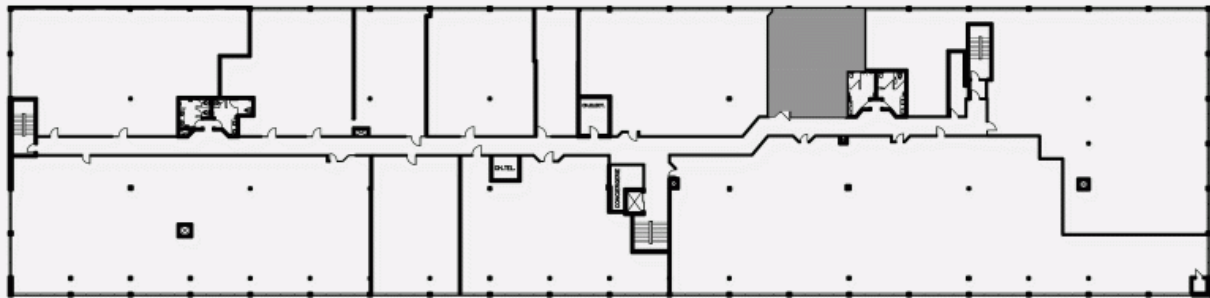
## Location Cominar



T 418 681-6300 #2411

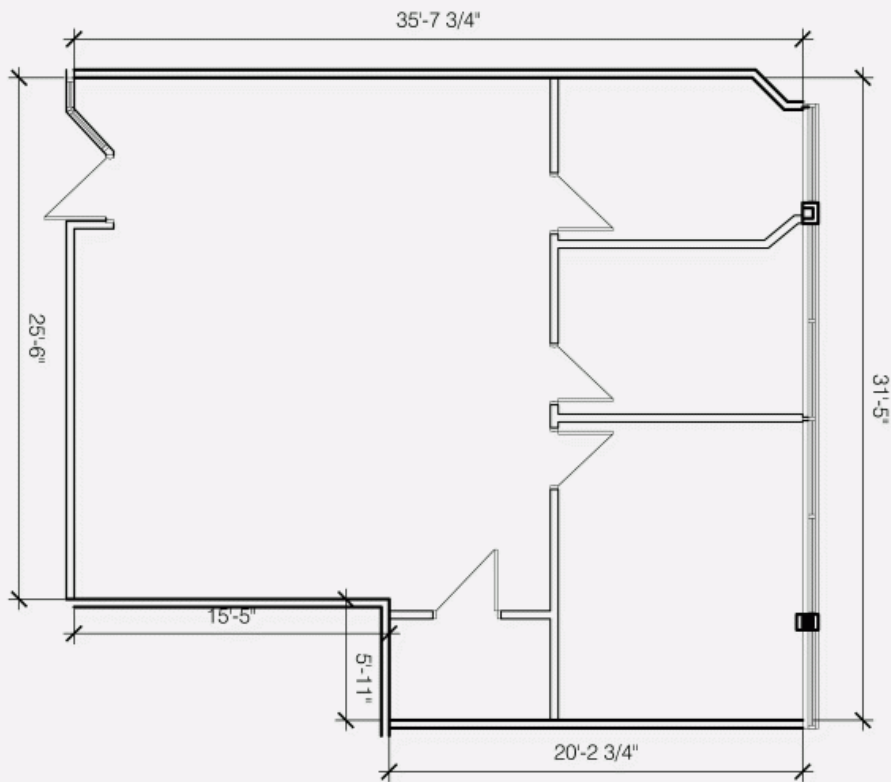
E LOCATIONQUEBEC@COMINAR.COM

LOCATION PLAN



AVENUE ST-JEAN-BAPTISTE

DEVELOPMENT PLAN





Building picture





