

# 4141 to 4149 Jean-Noël-Lavoie Highway, Laval, QC, H7P 4W6 Suite #104A

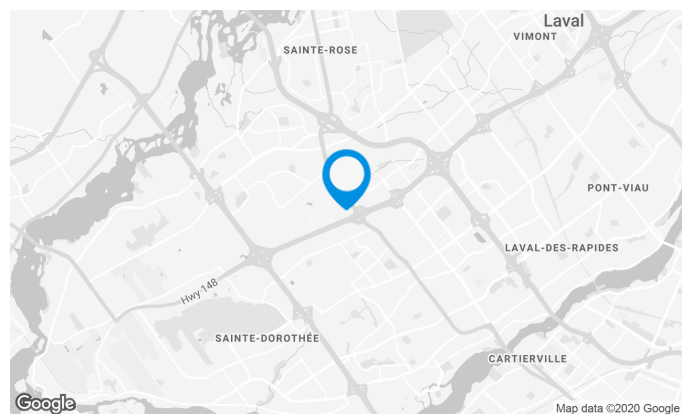
Located near Autoroute 440 and Curé-Labelle Boulevard. Easily accessible.

## Building characteristics

TOTAL LEASING AREA	195,761 ft²
YEAR OF RENOVATION	1986-2005
YEAR OF CONSTRUCTION	1977
NUMBER OF FLOORS	2
ASCENCEURS	1
SPRINKLERS	Yes

## BUILDING ACCESSIBILITY

OUTDOOR PARKING	225
PARC À VÉLOS DISPONIBLE	Yes
ROAD ACCESS	Jean-Noel-Lavoie Highway (440), Curé-Labelle Boulevard (117)
BUS	55, 151



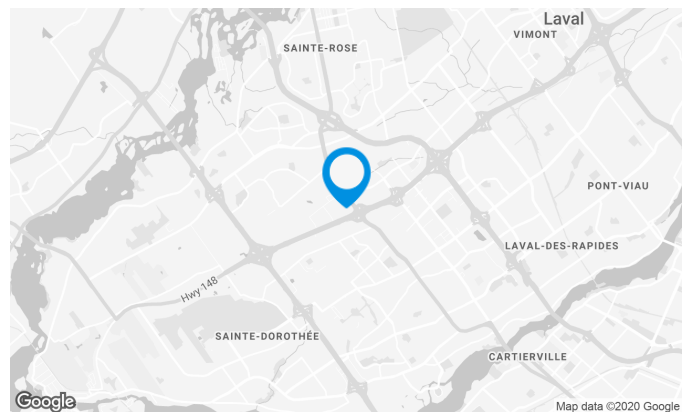
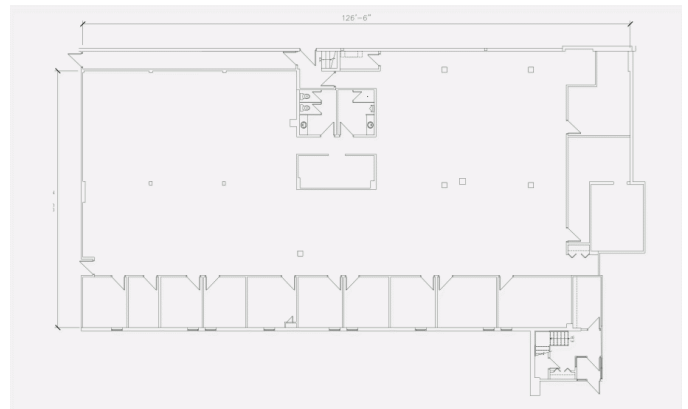
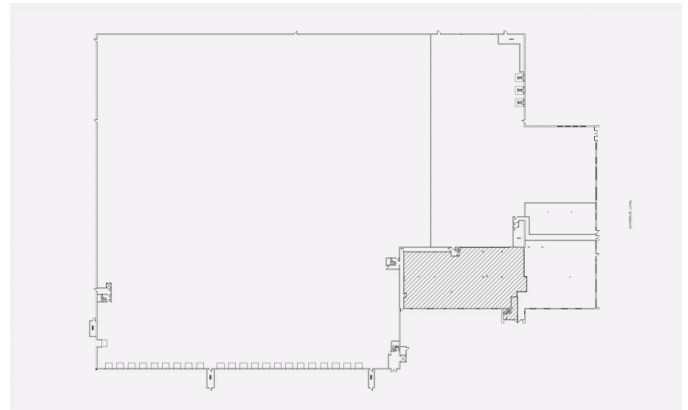
**Victoria Tenenboym**

LEASING MANAGER  
LEASING - INDUSTRIAL, MONTREAL AREA

**T** 514 737-3344 #3218  
**C** 514 894-6505  
**E** VICTORIA.TENENBOYM@COMINAR.COM

## Space characteristics

AVAILABLE LEASING AREA	7,588 ft <sup>2</sup>
AVAILABILITY	Immediate
FLOOR AREA	97,880 ft <sup>2</sup>
HEIGHT	20' - 32'10"
ENERGY	Included
COMMENTS / NOTES	Existing improvements



**Victoria Tenenboym**

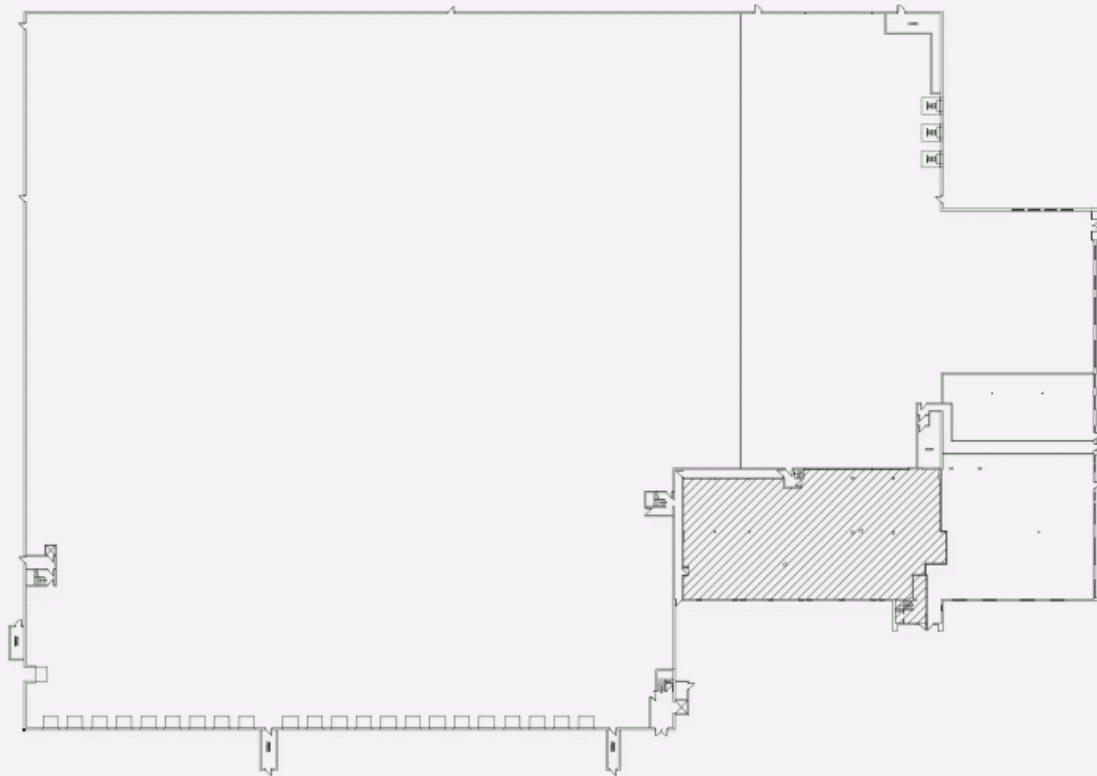
LEASING MANAGER  
LEASING - INDUSTRIAL, MONTREAL AREA

**T** 514 737-3344 #3218

**C** 514 894-6505

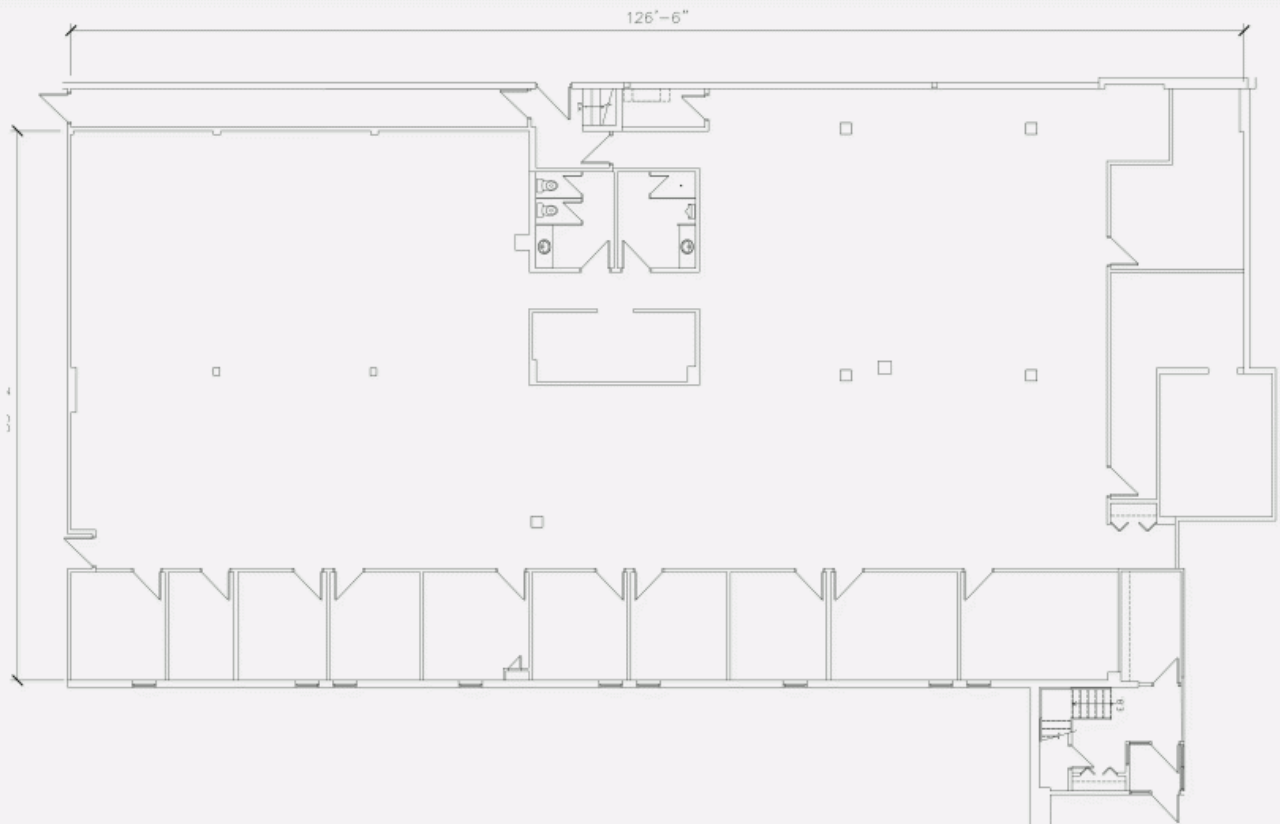
**E** VICTORIA.TENENBOYM@COMINAR.COM

LOCATION PLAN



AUTREMOYNE L'AVAIL

LAYOUT PLAN



**4141 to 4149 Jean-Noël-Lavoie Highway, Laval, QC, H7P  
4W6  
Suite #104A**

