

# 655 Promenade Du Centropolis, Laval, QC, H7T 0A3

## Suite #R224

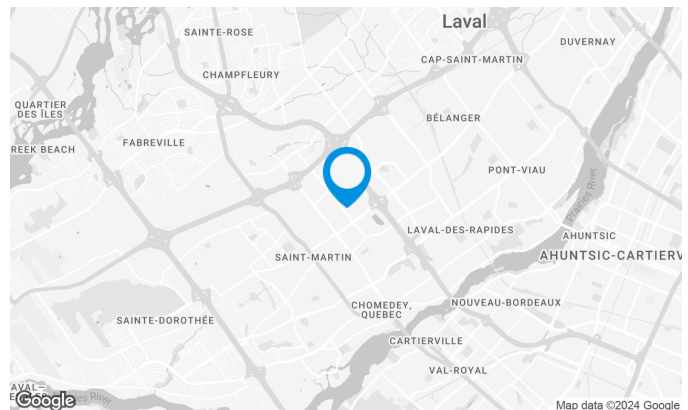
This building is located in downtown Laval, in the quadrilateral of Highway 15, Saint-Martin Boulevard West, Cosmodome Avenue and Daniel-Johnson Boulevard.

### Building characteristics

TOTAL LEASING AREA	55,974 sq. ft.
NUMBER OF FLOORS	2
ASCENCEURS	1
OPTICAL FIBER	Yes
SPRINKLERS	Yes
HVAC HOURS	8 am to 6 pm (Monday-Friday)
SECURITY	Access card and cameras
BUILDING SERVICES	Bank

### BUILDING ACCESSIBILITY

INDOOR PARKING	50
OUTDOOR PARKING	5,013
PARC À VÉLOS DISPONIBLE	Yes
ROAD ACCESS	Laurentian Autoroute (15), Jean-Noel-Lavoie Highway (440), Daniel-Johnson Boulevard, Le Carrefour Boulevard, Saint-Martin Boulevard West
BUS	42, 60, 61, 66, 70, 360



**Julie Coulombe**

LEASING ASSISTANT  
LEASING

T 418 681-6300

E JULIE.COULOMBE@COMINAR.COM

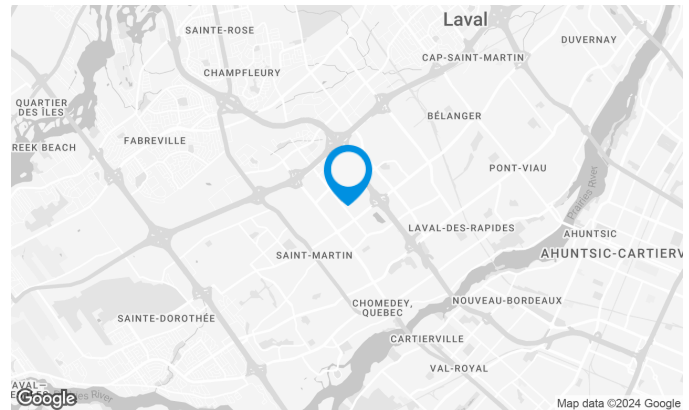
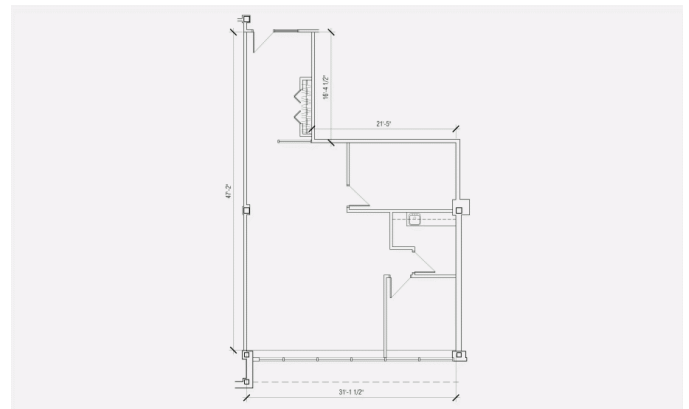
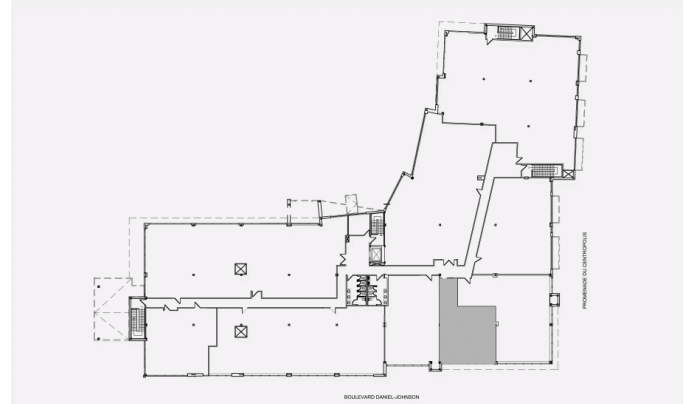
# 655 Promenade Du Centropolis, Laval, QC, H7T 0A3

## Suite #R224



### Space characteristics

AVAILABLE LEASING AREA	1,308 sq. ft.
AVAILABILITY	Immediate
NUMBER OF FLOORS	1
FLOOR AREA	27,946 sq. ft.
ADDITIONAL RENT	\$15.67 /sq. ft.
ENERGY	Included



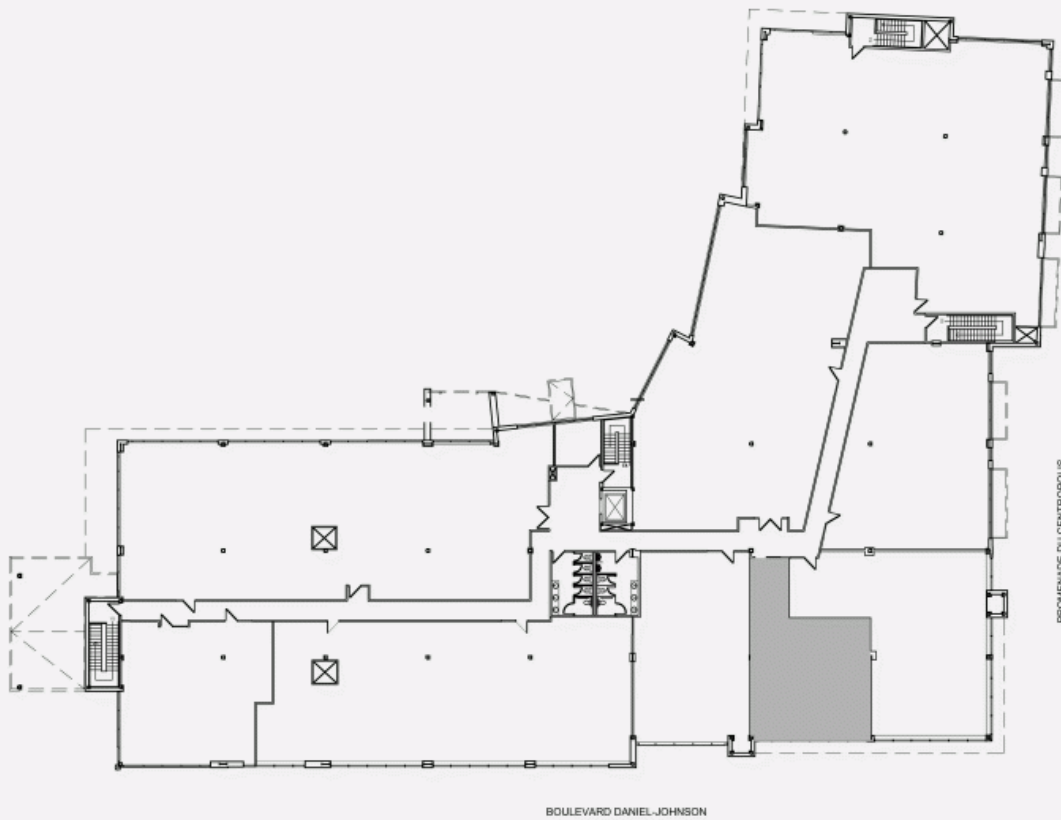
**Julie Coulombe**

LEASING ASSISTANT  
LEASING

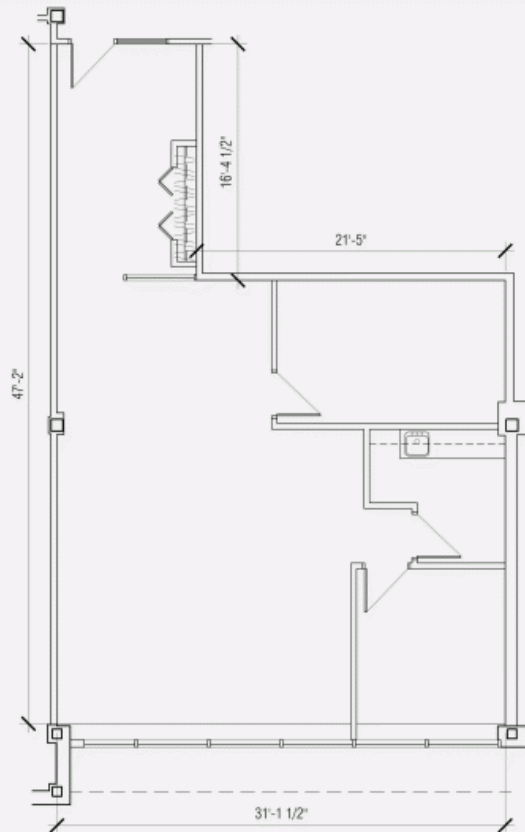
T 418 681-6300

E JULIE.COULOMBE@COMINAR.COM

LOCATION PLAN



LAYOUT PLAN





**655 Promenade Du Centropolis, Laval, QC, H7T 0A3**  
**Suite #R224**

