

# 655 Promenade Du Centropolis, Laval, QC, H7T 0A3

## Suite #R210

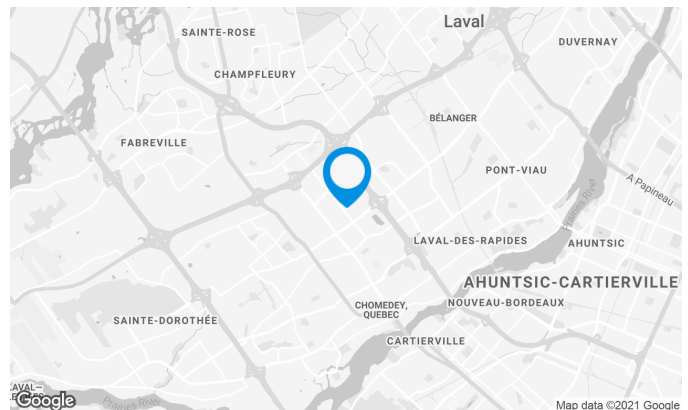
This building is located in downtown Laval, in the quadrilateral of Highway 15, Saint-Martin Boulevard West, Cosmodome Avenue and Daniel-Johnson Boulevard.

### Building characteristics

TOTAL LEASING AREA	55,974 ft <sup>2</sup>
NUMBER OF FLOORS	2
ASCENCEURS	1
OPTICAL FIBER	Yes
SPRINKLERS	Yes
HVAC HOURS	8 am to 6 pm (Monday-Friday)
SECURITY	Access card and cameras
BUILDING SERVICES	Bank

### BUILDING ACCESSIBILITY

INDOOR PARKING	50
OUTDOOR PARKING	5,013
PARC À VÉLOS DISPONIBLE	Yes
ROAD ACCESS	Laurentian Autoroute (15), Jean-Noel-Lavoie Highway (440), Daniel-Johnson Boulevard, Le Carrefour Boulevard, Saint-Martin Boulevard West
BUS	42, 60, 61, 66, 70, 360



**Julie Godbout**

LEASING DIRECTOR  
LEASING - OFFICES, MONTREAL AREA

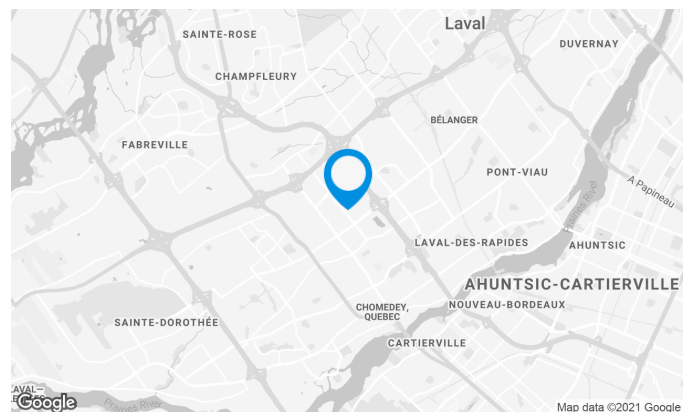
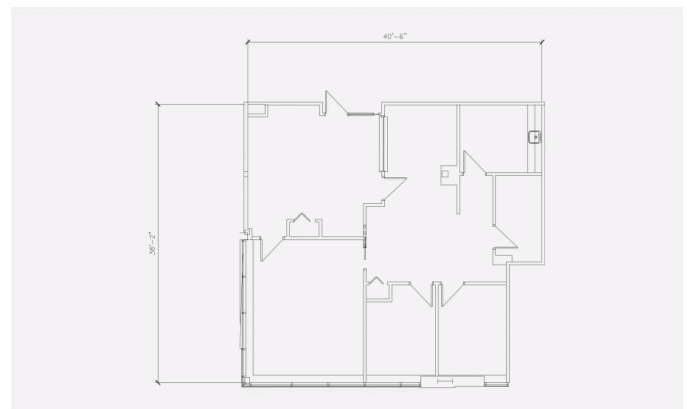
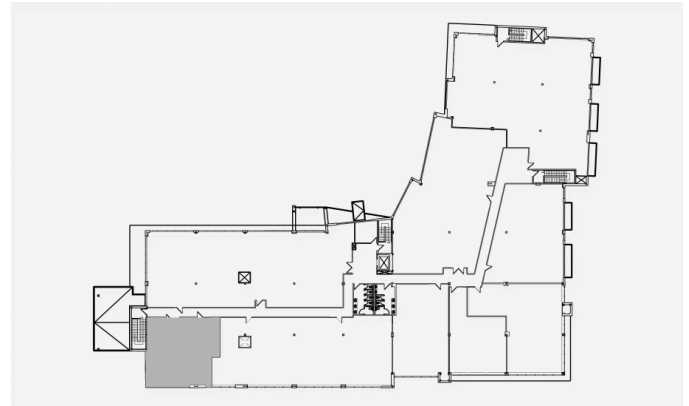
**T** 514 737-3344 #3485  
**C** 514 238-7079  
**E** JULIE.GODBOUT@COMINAR.COM

# 655 Promenade Du Centropolis, Laval, QC, H7T 0A3

## Suite #R210

### Space characteristics

AVAILABLE LEASING AREA	1,626 ft <sup>2</sup>
AVAILABILITY	30 jours
NUMBER OF FLOORS	1
FLOOR AREA	27,946 ft <sup>2</sup>
ADDITIONNAL RENT	\$15.67 /ft <sup>2</sup>
ENERGY	Included
COMMENTS / NOTES	Fully renovated and furnished premise (optional)



**Julie Godbout**

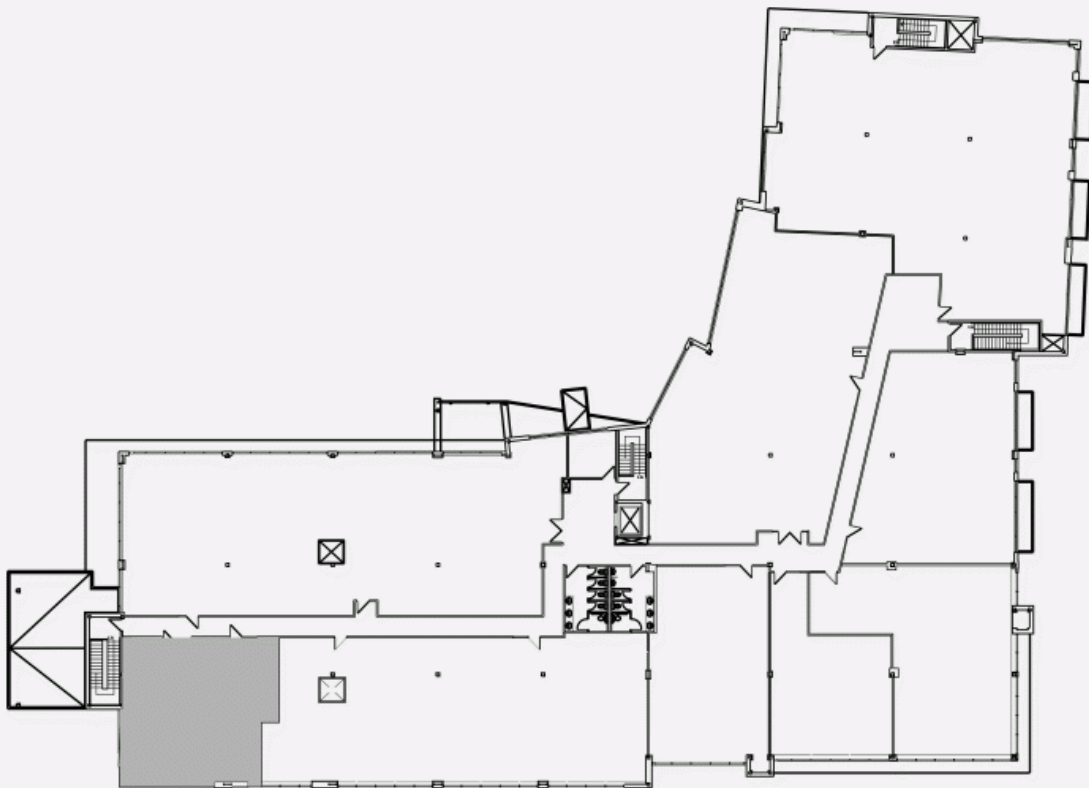
LEASING DIRECTOR  
LEASING - OFFICES, MONTREAL AREA

**T** 514 737-3344 #3485

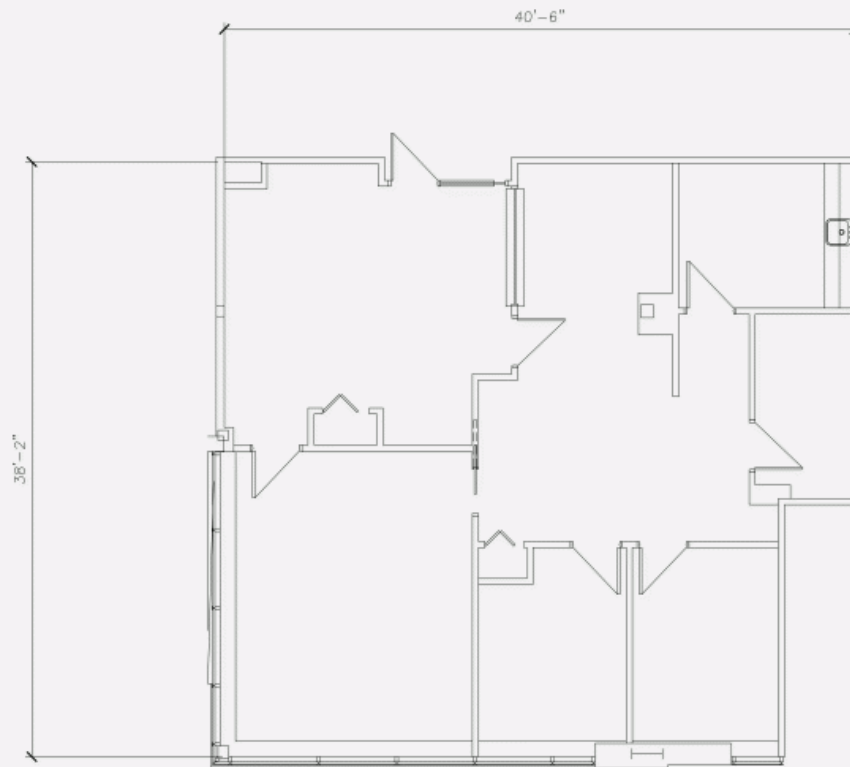
**C** 514 238-7079

**E** JULIE.GODBOUT@COMINAR.COM

LOCATION PLAN



LAYOUT PLAN



**655 Promenade Du Centropolis, Laval, QC, H7T 0A3**  
**Suite #R210**

