

115 Vaudreuil Street, Boucherville, QC, J4B 1K7

Suite #C-21

In the heart of Boucherville Industrial Park, this property offers easy access to all major highways.

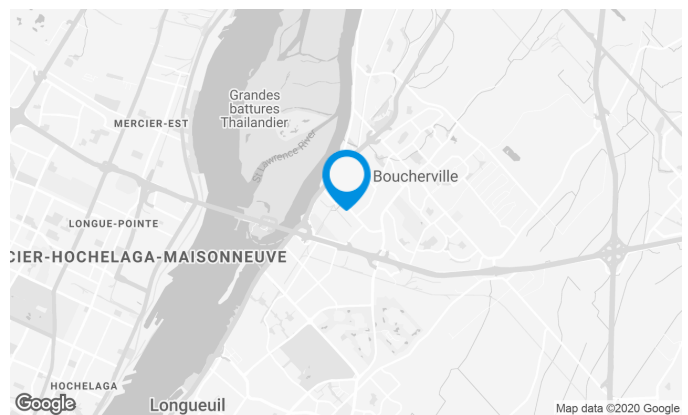
The 1st floor is an industrial uses and the 2nd floor is dedicated for offices.

Building characteristics

TOTAL LEASING AREA	16,297 ft ²
NUMBER OF FLOORS	2
SPRINKLERS	Yes

BUILDING ACCESSIBILITY

OUTDOOR PARKING	17
ROAD ACCESS	Industriel Boulevard, Road 132, Highway 20
BUS	T89, 83, 84



Stéphane Robidas

LEASING MANAGER

T 514 737-3344 #3373

C 514 605-5152

E STEPHANE.ROBIDAS@COMINAR.COM

Space characteristics

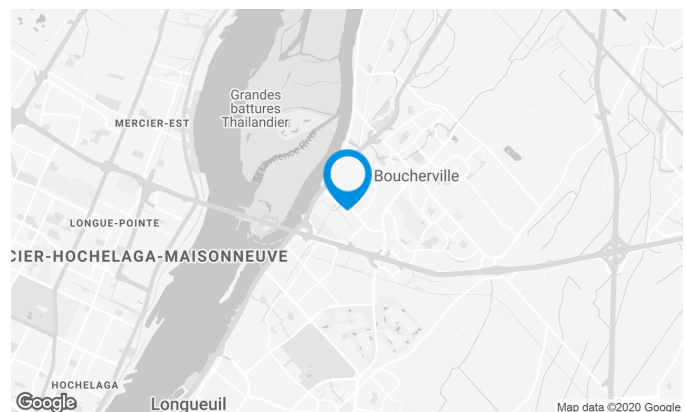
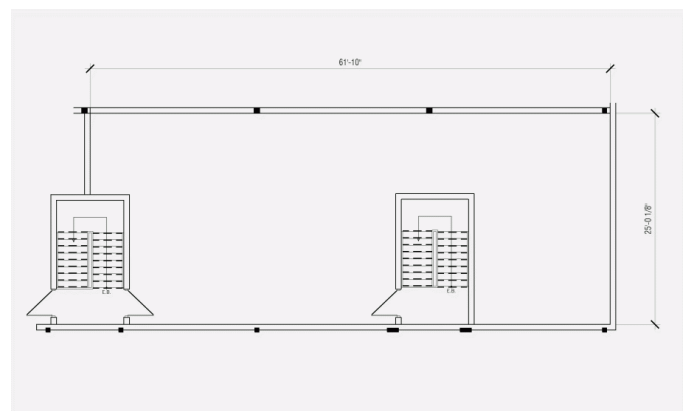
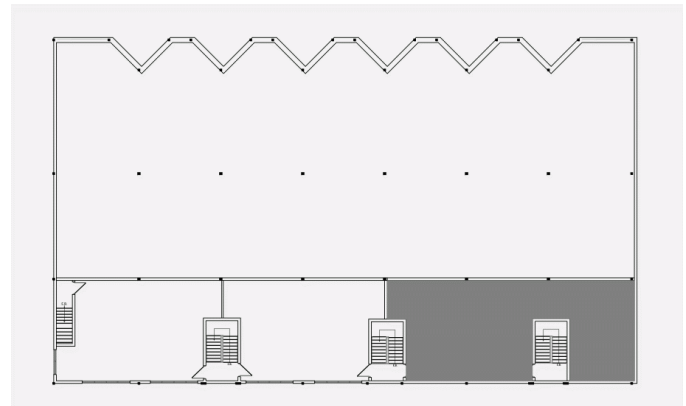
AVAILABLE LEASING AREA 1,650 ft²

AVAILABILITY Immediate

NUMBER OF FLOORS 1

FLOOR AREA 3,822 ft²

ENERGY Included



Stéphane Robidas

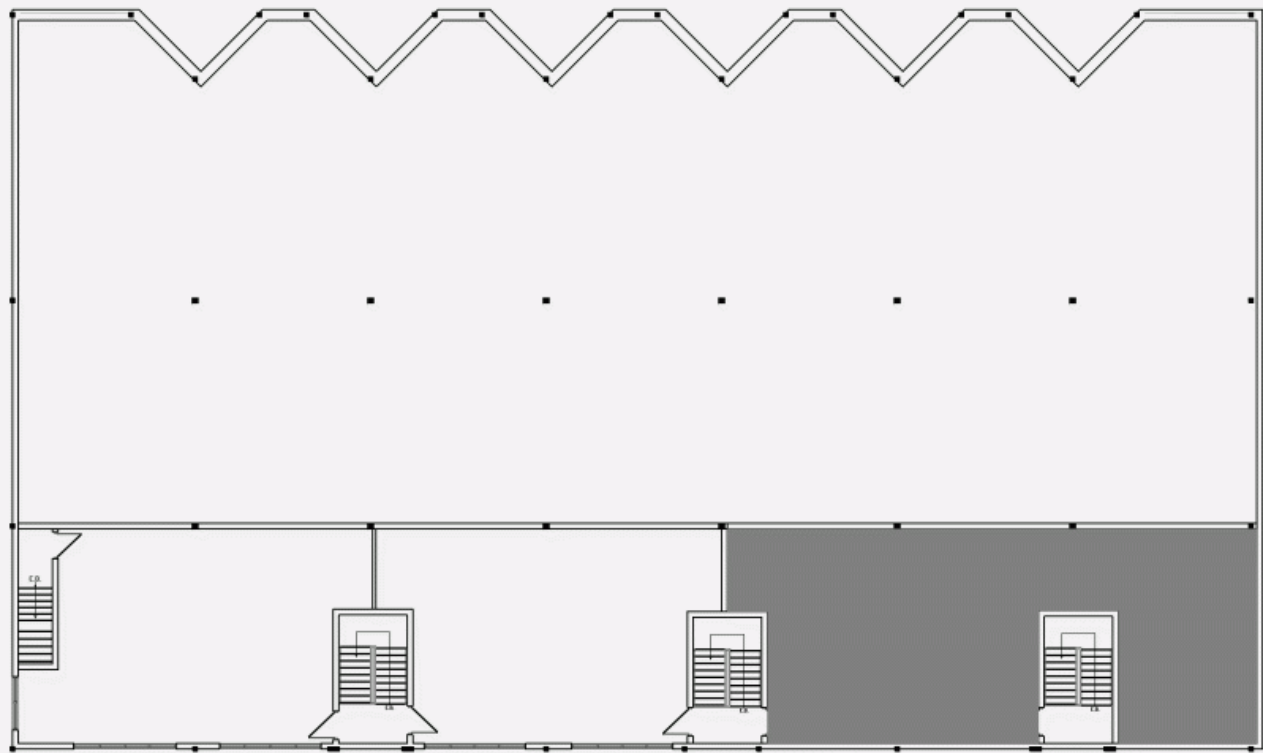
LEASING MANAGER

T 514 737-3344 #3373

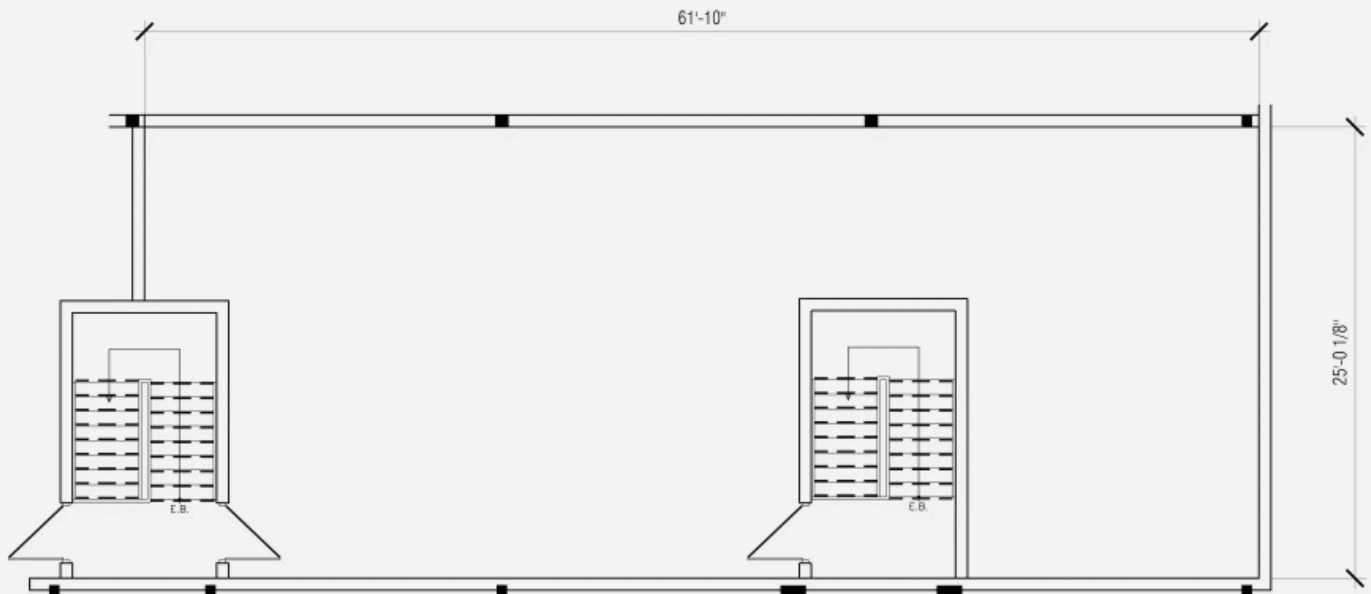
C 514 605-5152

E STEPHANE.ROBIDAS@COMINAR.COM

LOCATION PLAN



LAYOUT PLAN



115 Vaudreuil Street, Boucherville, QC, J4B 1K7
Suite #C-21

