

115 Vaudreuil Street, Boucherville, QC, J4B 1K7

Suite #A-21

In the heart of Boucherville Industrial Park, this property offers easy access to all major highways.

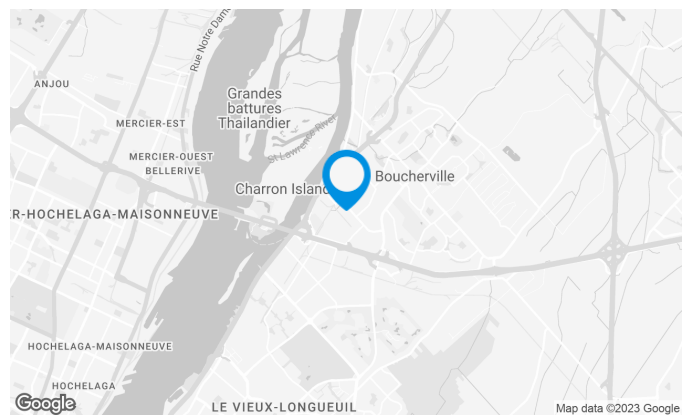
The 1st floor is an industrial uses and the 2nd floor is dedicated for offices.

Building characteristics

| | |
|--------------------|----------------|
| TOTAL LEASING AREA | 16,297 sq. ft. |
| NUMBER OF FLOORS | 2 |
| SPRINKLERS | Yes |

BUILDING ACCESSIBILITY

| | |
|-----------------|--|
| OUTDOOR PARKING | 17 |
| ROAD ACCESS | Industriel Boulevard, Road 132, Highway 20 |
| BUS | T89, 83, 84 |



Space characteristics

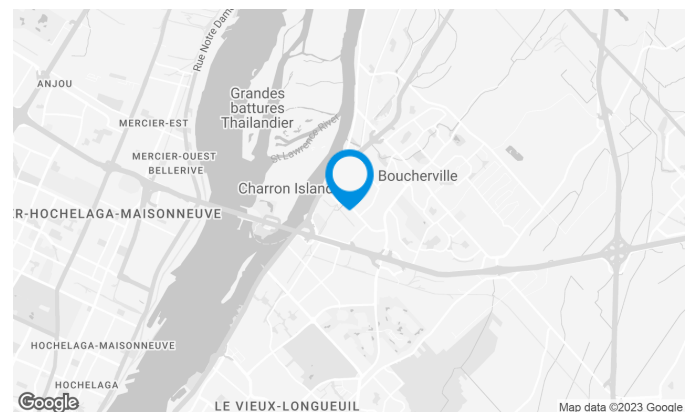
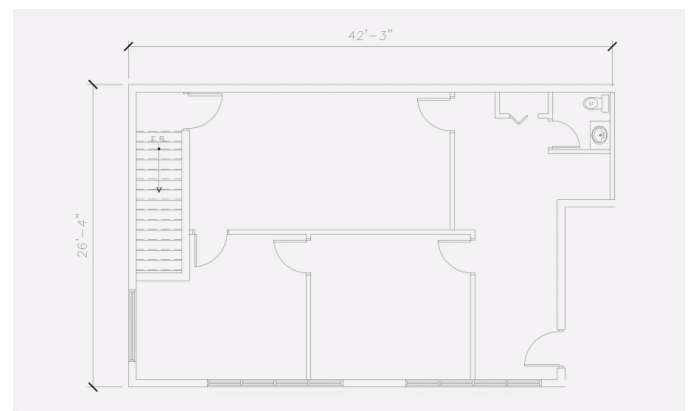
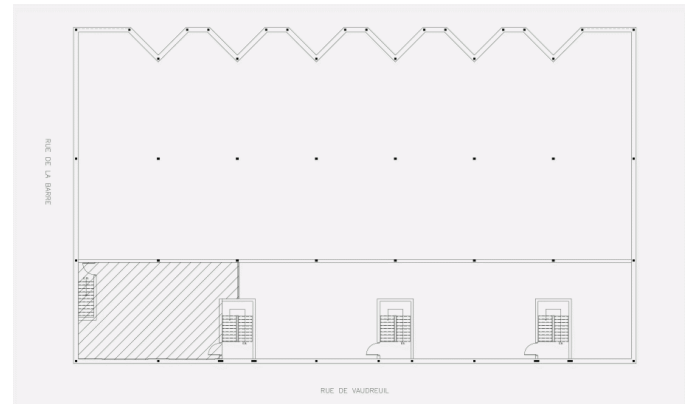
AVAILABLE LEASING AREA 1,245 sq. ft.

AVAILABILITY Immediate

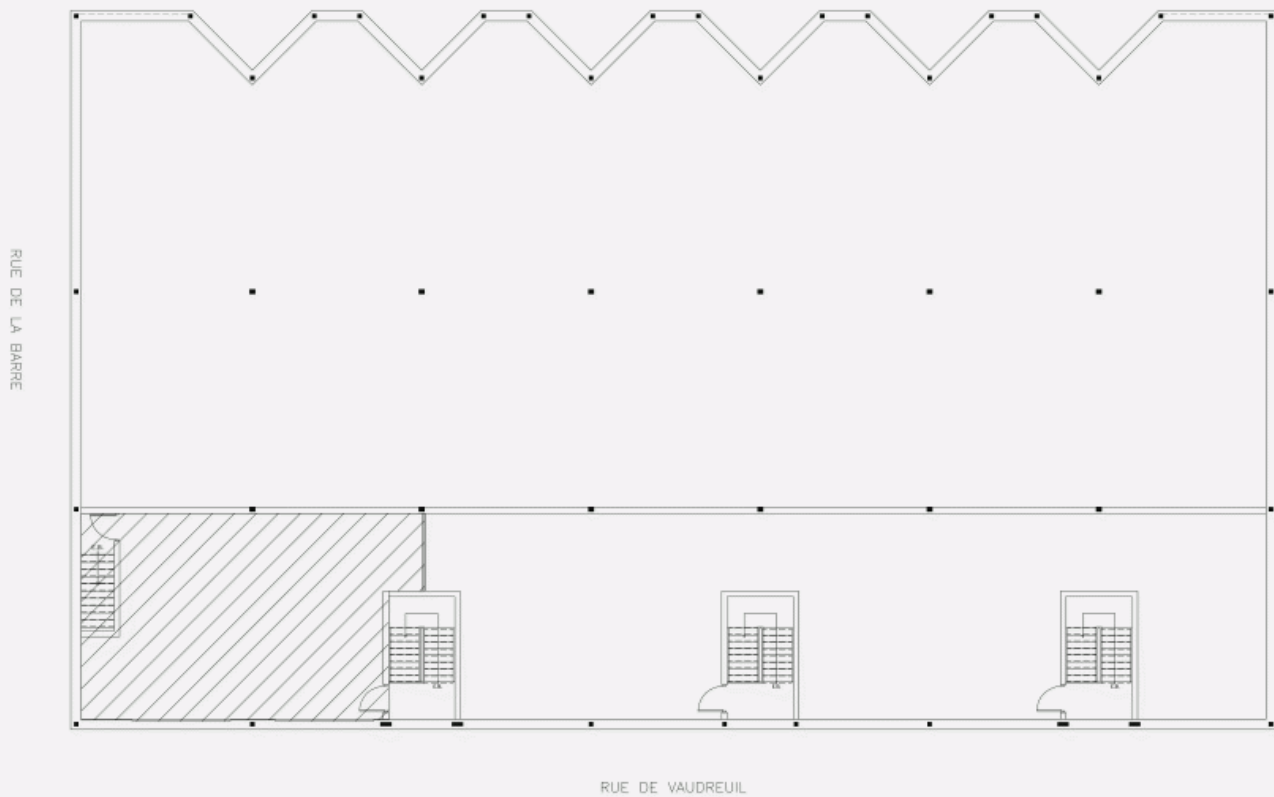
NUMBER OF FLOORS 1

FLOOR AREA 3,822 sq. ft.

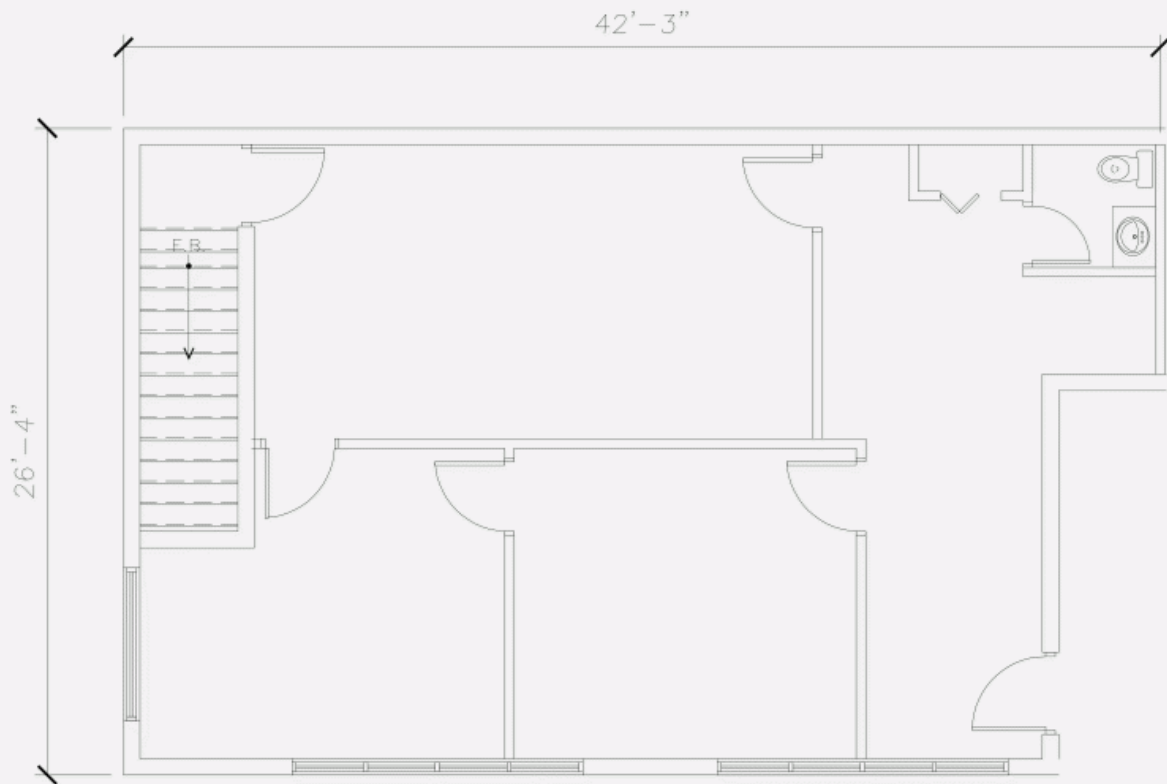
ENERGY Included



LOCATION PLAN



LAYOUT PLAN



115 Vaudreuil Street, Boucherville, QC, J4B 1K7
Suite #A-21

