

# 5073 to 5079 Wilfrid-Hamel Boulevard, Quebec, QC, G2E 5G3

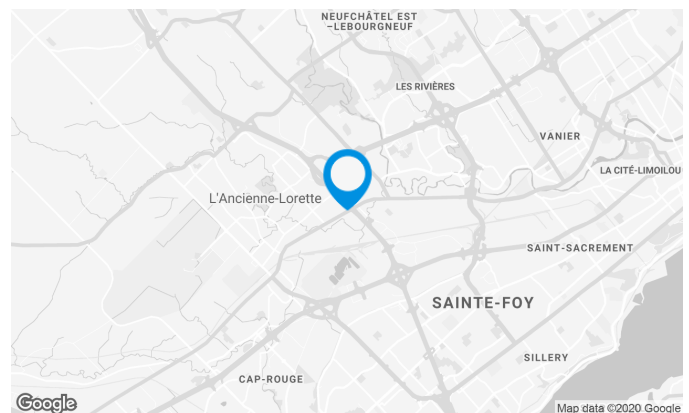
Located at the intersection of Highway Henri IV and Boulevard Hamel. (Crossroads of Commerce). Near the Félix-Leclerc Highway and the Quebec Metropolitan Technology Park.

## Building characteristics

TOTAL LEASING AREA	30,002 ft <sup>2</sup>
LAND AREA	54,295 ft <sup>2</sup>
YEAR OF RENOVATION	2016
NUMBER OF FLOORS	4
ELEVATORS	1
% COMMON AREA	11
OPTICAL FIBER	Yes
SPRINKLERS	Yes
SECURITY	Card system
BUILDING SERVICES	Restaurants

## BUILDING ACCESSIBILITY

OUTDOOR PARKING	82
ROAD ACCESS	Wilfrid-Hamel Boulevard / Henri IV Highway
BUS	88/380

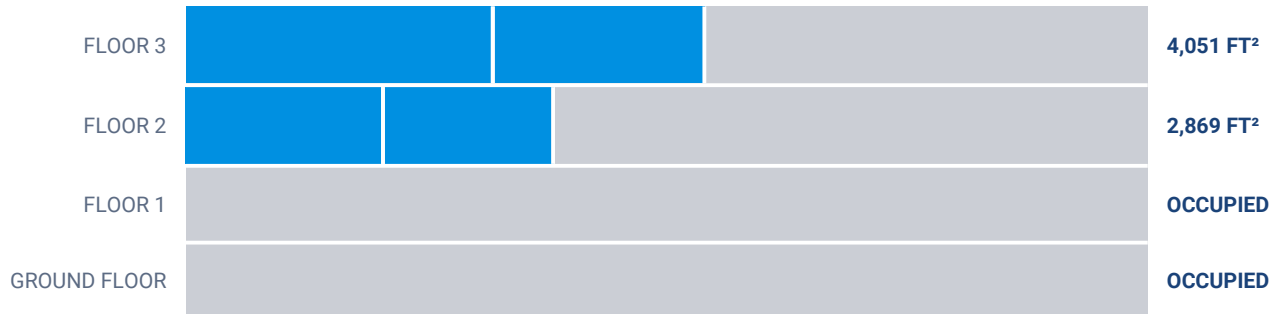


## Location Cominar



T 418 681-6300 #2411  
E LOCATIONQUEBEC@COMINAR.COM

**Available leasing areas from 1,329 ft<sup>2</sup> to 2,398 ft<sup>2</sup>**



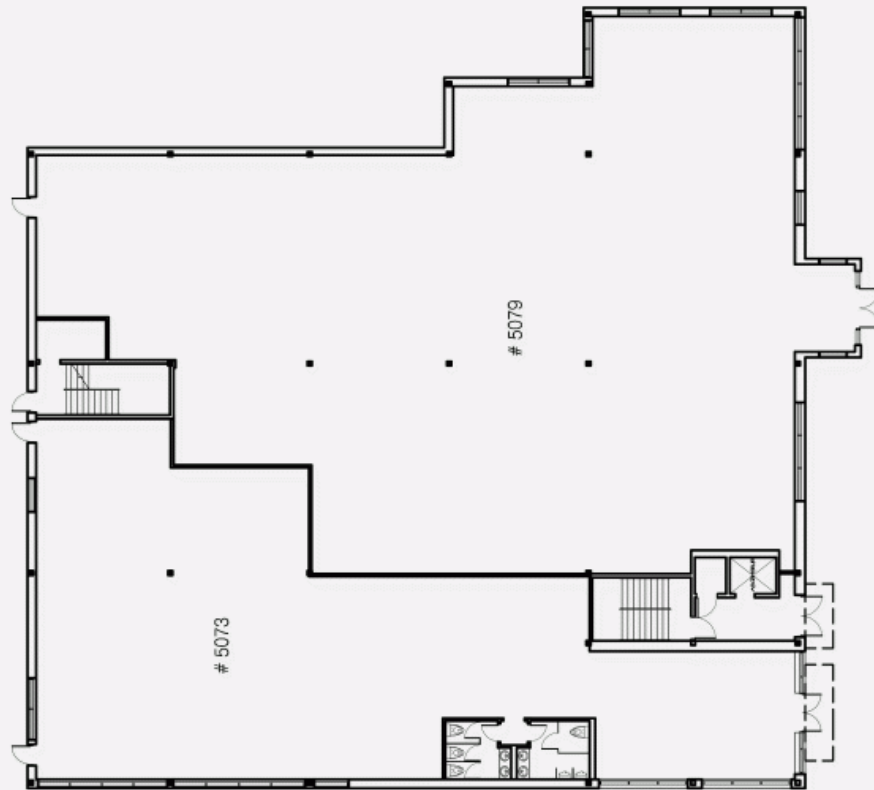
**List of available offices**

SUITE	FLOOR	AVAILABILITY	AREA
Suite #220	2	Immediate	1,540 ft <sup>2</sup>
Suite #230	2	Immediate	1,329 ft <sup>2</sup>
Suite #302	3	Immediate	1,653 ft <sup>2</sup>
Suite #301	3	Immediate	2,398 ft <sup>2</sup>

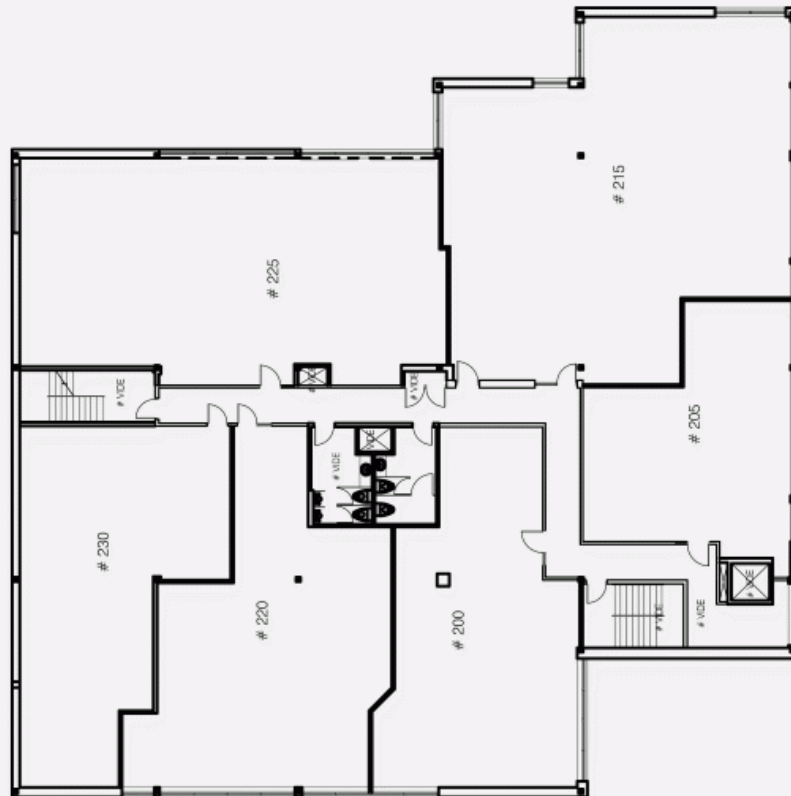
**5073 to 5079 Wilfrid-Hamel Boulevard, Quebec, QC, G2E  
5G3**



RDC PLAN



FLOOR 2 PLAN



FLOOR 3 PLAN

