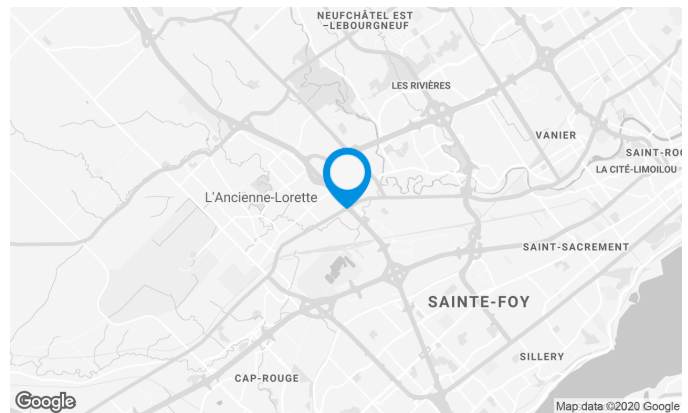


## Building characteristics

TOTAL LEASING AREA	23,011 ft <sup>2</sup>
BUILDING AREA	23,011 ft <sup>2</sup>
LAND AREA	87,245 ft <sup>2</sup>
NUMBER OF FLOORS	2
BUILDING SERVICES	Dock (16) Door on the ground (4)

## BUILDING ACCESSIBILITY

OUTDOOR PARKING	125
ROAD ACCESS	Located at the intersection of Henri IV highway and Wilfrid Hamel boulevard.
BUS	88, 380



## Location Cominar

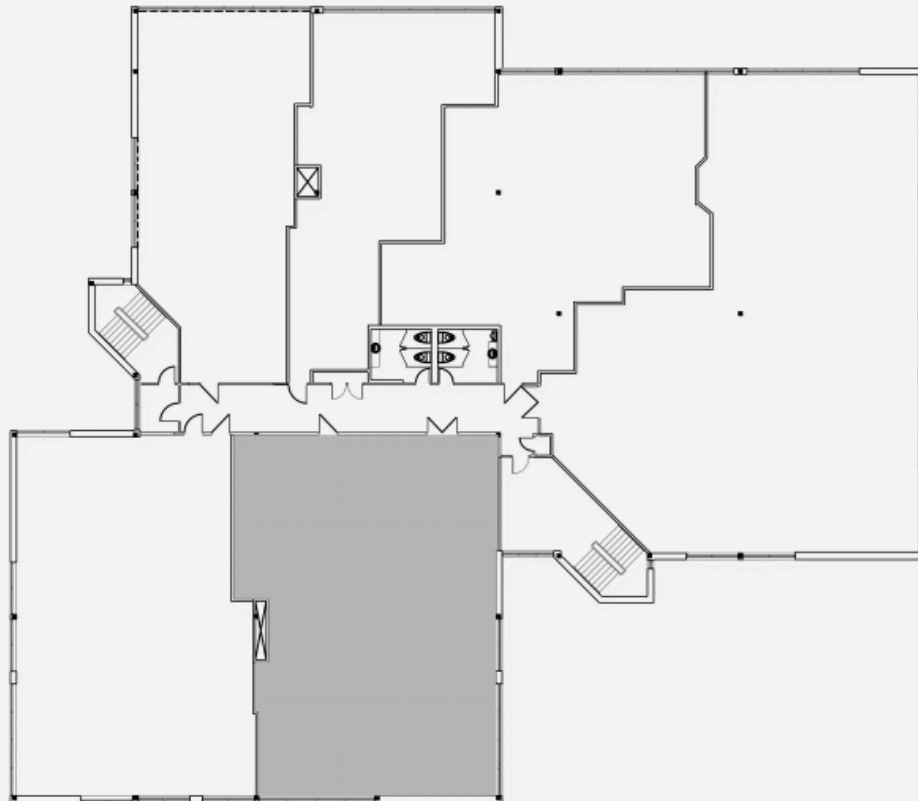


**T** 418 681-6300 #2411  
**E** LOCATIONQUEBEC@COMINAR.COM

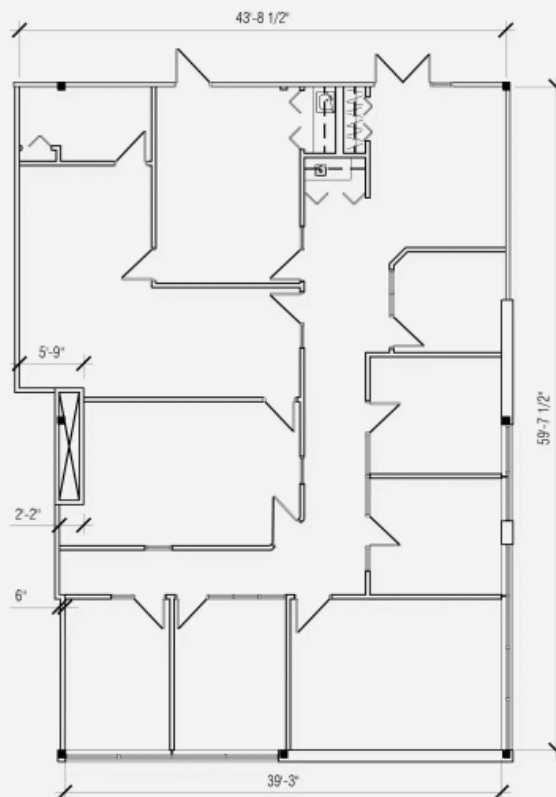


PLAN - 1

BOULEVARD WILFRID-HAMEL



LOCATION PLAN



**5055 Wilfrid-Hamel Boulevard West, Quebec, QC, G2E 2G6**  
**Suite #250**

