

1990 Cyrille-Duquet Street, Quebec, QC, G1N 4K8

Suite #216

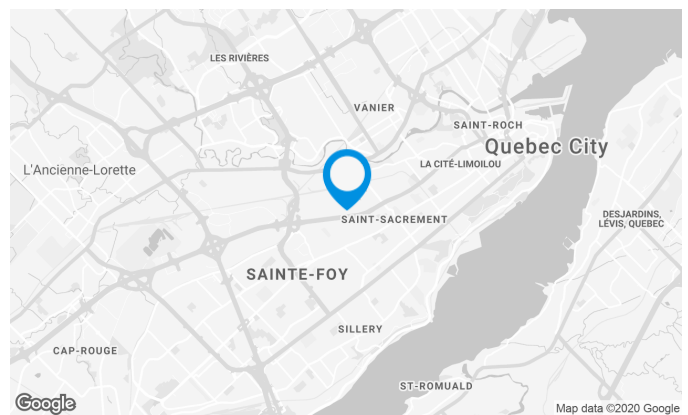
Located at the intersection of the Charest and Robert-Bourassa highways, in a commercial area

Building characteristics

TOTAL LEASING AREA	25,457 ft ²
YEAR OF RENOVATION	1996
NUMBER OF FLOORS	2
% COMMON AREA	5
OPTICAL FIBER	Yes
SECURITY	Access card, door schedule

BUILDING ACCESSIBILITY

ROAD ACCESS	Charest Highway / Saint-Sacrement Avenue
BUS	9



Location Cominar



T 418 681-6300 #2411
E LOCATIONQUEBEC@COMINAR.COM

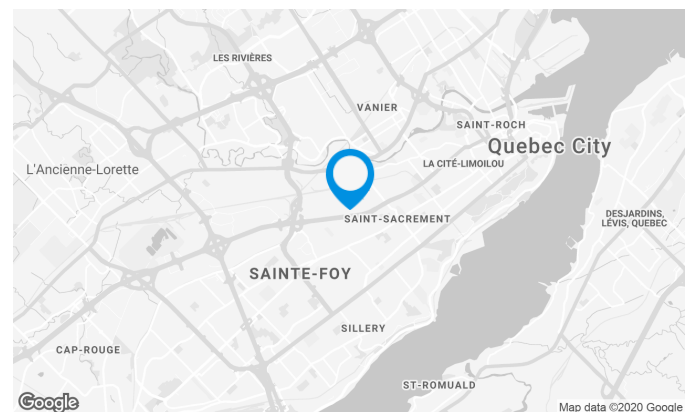
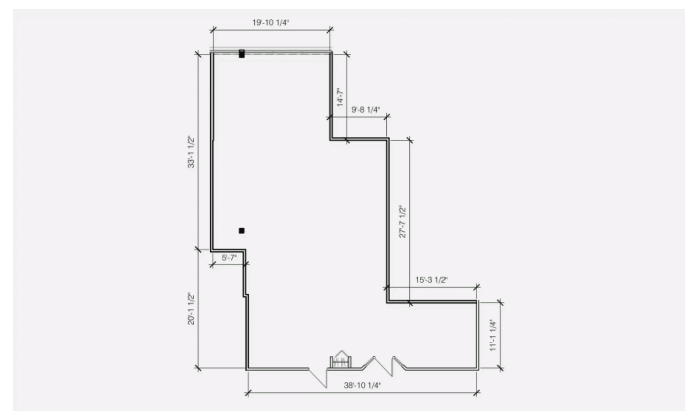
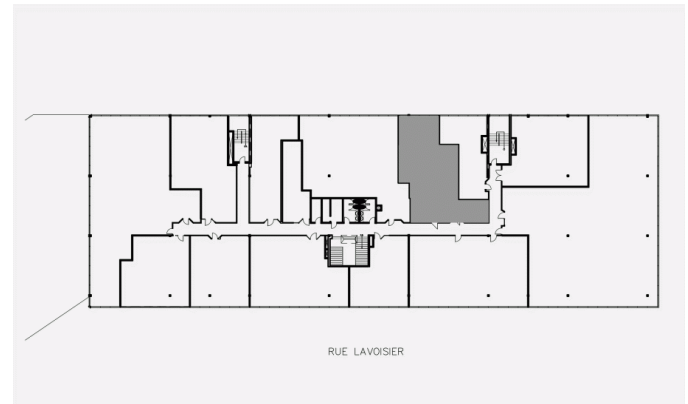
Space characteristics

AVAILABLE LEASING AREA 1,720 ft²

AVAILABILITY Immediate

NUMBER OF FLOORS 1

FLOOR AREA 45,528 ft²



Location Cominar



T 418 681-6300 #2411

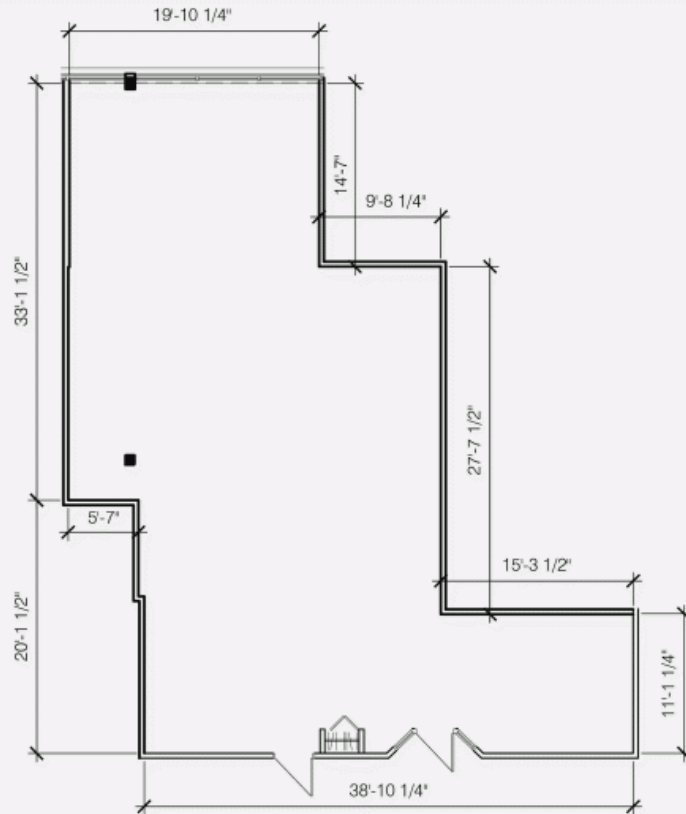
E LOCATIONQUEBEC@COMINAR.COM

LOCATION PLAN



RUE LAVOISIER

DEVELOPMENT PLAN



1990 Cyrille-Duquet Street, Quebec, QC, G1N 4K8
Suite #216

