

1990 Cyrille-Duquet Street, Quebec, QC, G1N 4K8

Suite #212

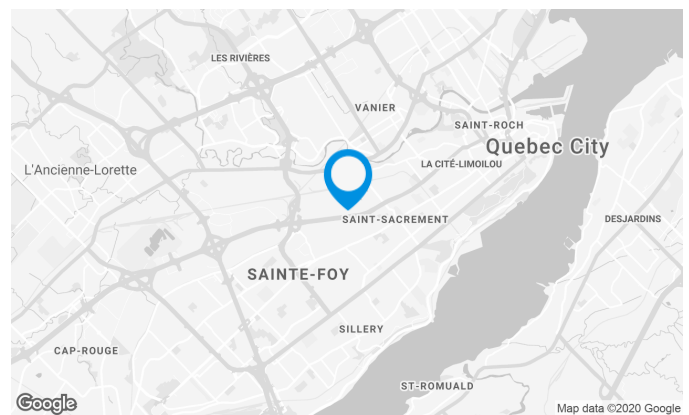
Located at the intersection of the Charest and Robert-Bourassa highways, in a commercial area

Building characteristics

TOTAL LEASING AREA	25,457 ft ²
YEAR OF RENOVATION	1996
NUMBER OF FLOORS	2
% COMMON AREA	5
OPTICAL FIBER	Yes
SECURITY	Access card, door schedule

BUILDING ACCESSIBILITY

ROAD ACCESS	Charest Highway / Saint-Sacrement Avenue
BUS	9



Location Cominar



T 418 681-6300 #2411
E LOCATIONQUEBEC@COMINAR.COM

The space is adjacent to room 206 and 216 for a possible area of 5,853 square feet.

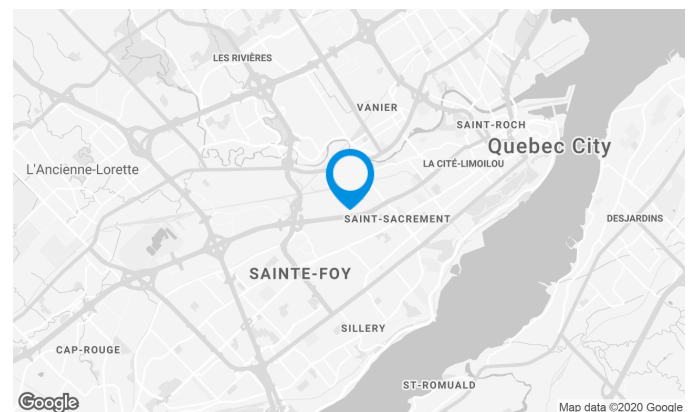
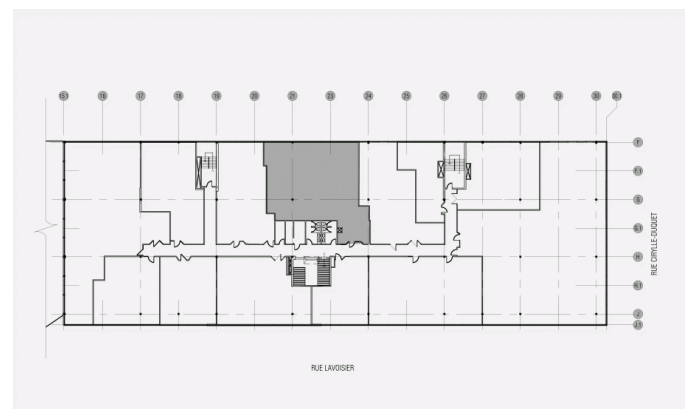
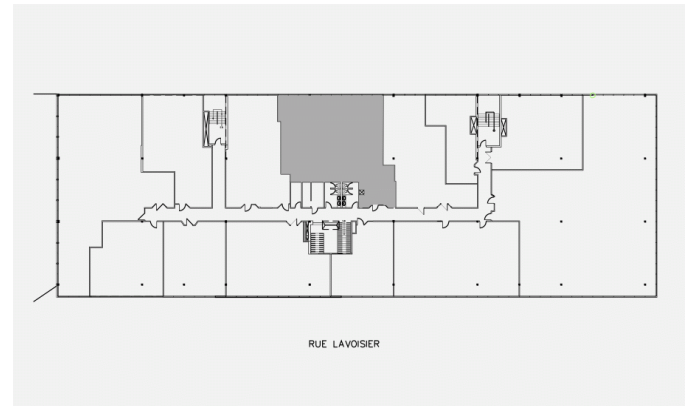
Space characteristics

AVAILABLE LEASING AREA 2,518 ft²

AVAILABILITY Immediate

NUMBER OF FLOORS 1

FLOOR AREA 45,528 ft²



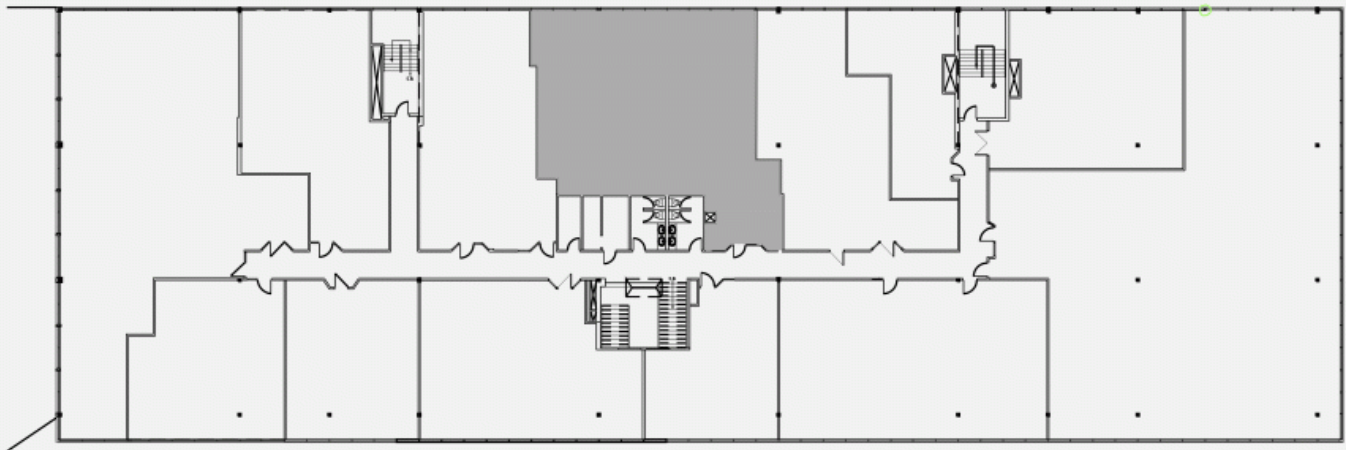
Location Cominar



T 418 681-6300 #2411

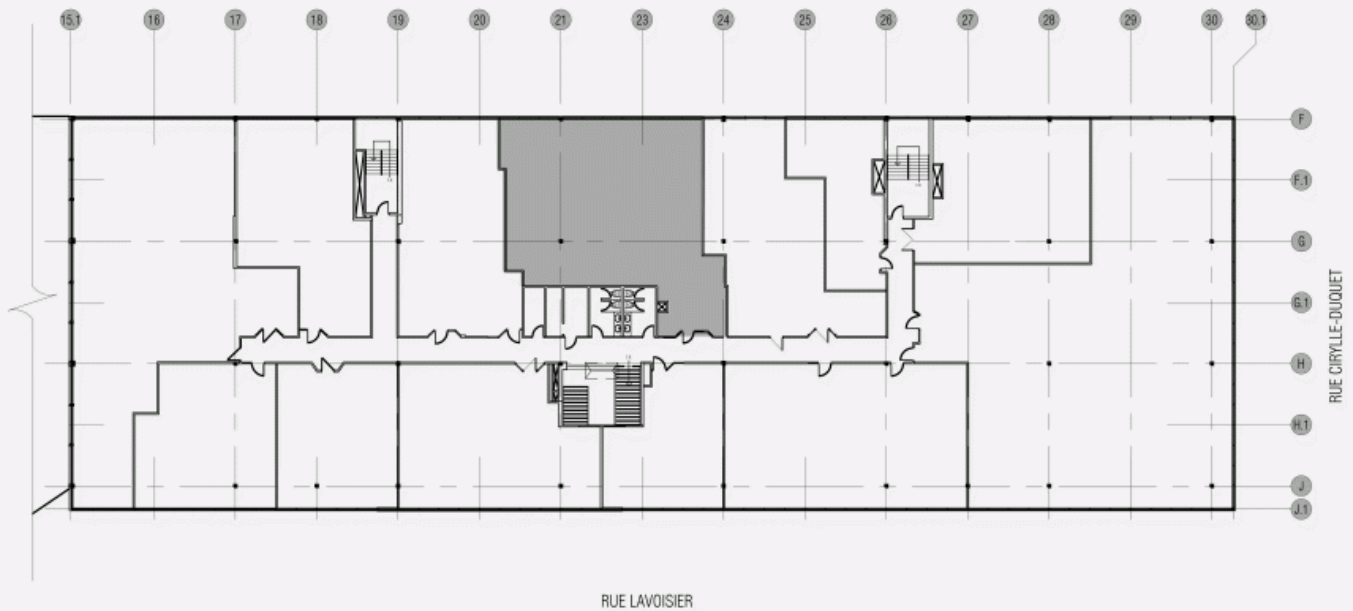
E LOCATIONQUEBEC@COMINAR.COM

LOCATION PLAN

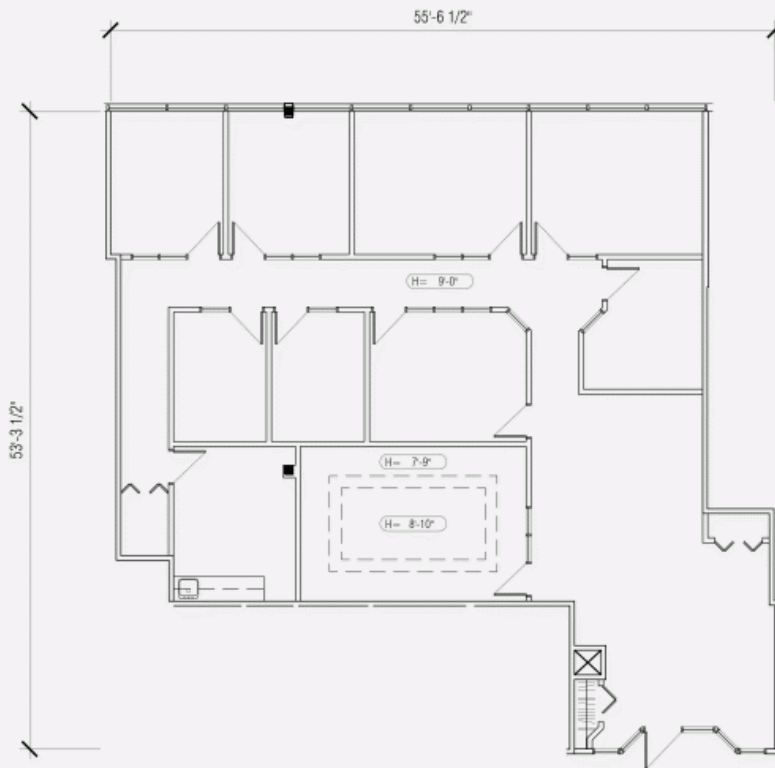


RUE LAVOISIER

LOCATION PLAN



DEVELOPMENT PLAN



1990 Cyrille-Duquet Street, Quebec, QC, G1N 4K8
Suite #212



Building image