

1990 Cyrille-Duquet Street, Quebec, QC, G1N 4K8

Suite #211

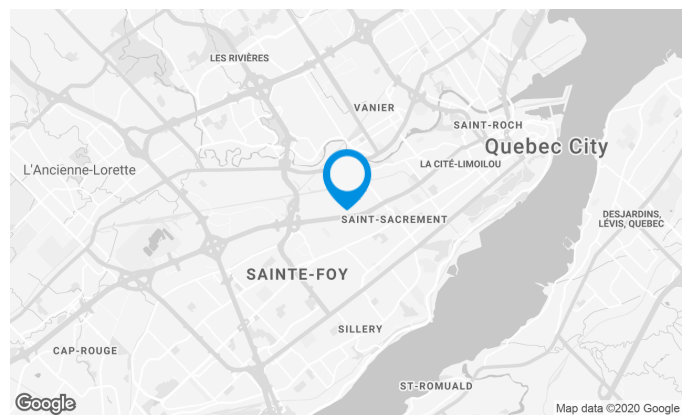
Located at the intersection of the Charest and Robert-Bourassa highways, in a commercial area

Building characteristics

TOTAL LEASING AREA	25,457 ft ²
YEAR OF RENOVATION	1996
NUMBER OF FLOORS	2
% COMMON AREA	5
OPTICAL FIBER	Yes
SECURITY	Access card, door schedule

BUILDING ACCESSIBILITY

ROAD ACCESS	Charest Highway / Saint-Sacrement Avenue
BUS	9



Location Cominar

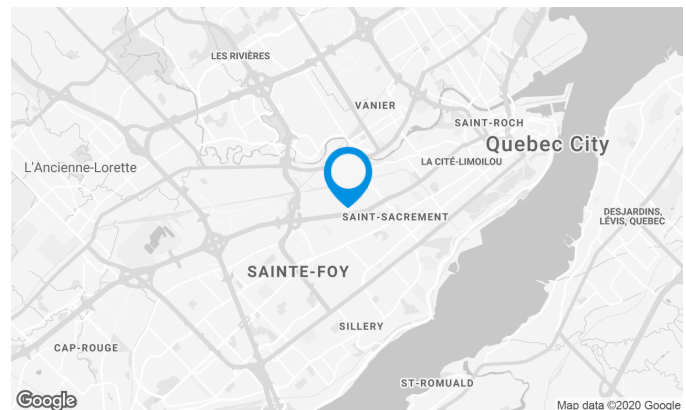
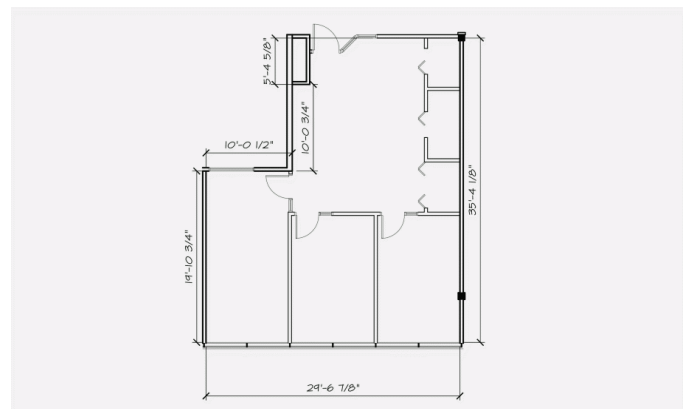
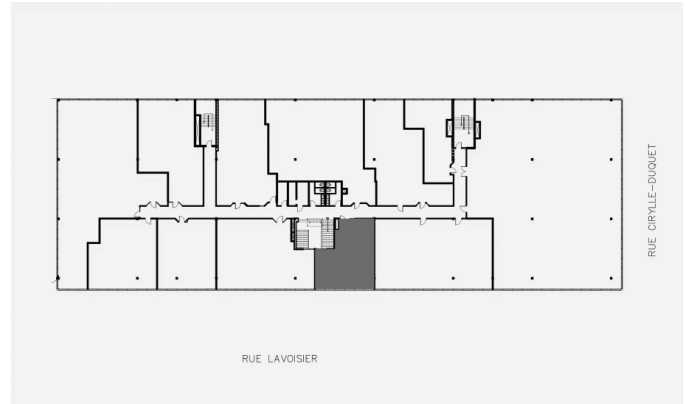


T 418 681-6300 #2411
E LOCATIONQUEBEC@COMINAR.COM

Contiguous with the local 209, possibility of 2,826 square feet.

Space characteristics

AVAILABLE LEASING AREA	1,024 ft ²
AVAILABILITY	Immediate
NUMBER OF FLOORS	1
FLOOR AREA	45,528 ft ²
HEIGHT	9'1"



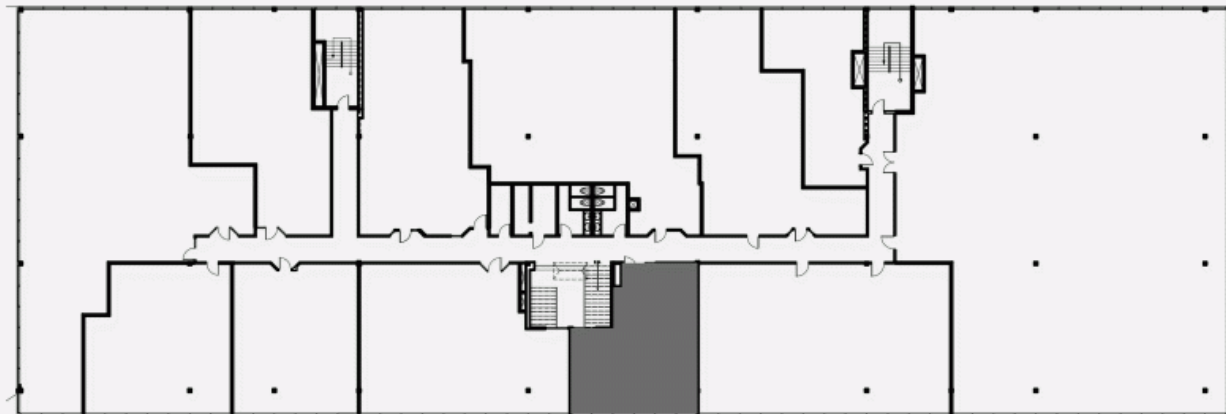
Location Cominar



T 418 681-6300 #2411

E LOCATIONQUEBEC@COMINAR.COM

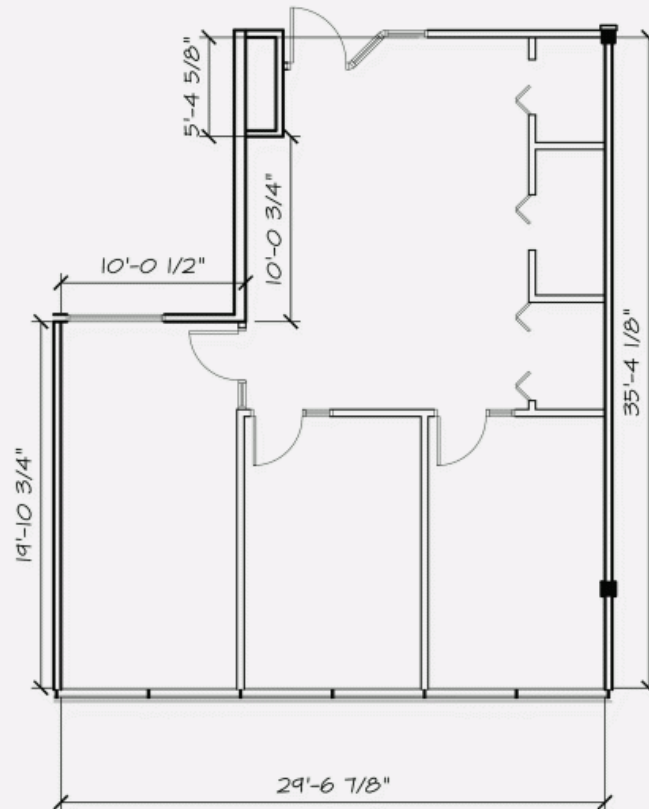
LOCATION PLAN



RUE CRYLLE-DUQUET

RUE LAVOISIER

DEVELOPMENT PLAN



1990 Cyrille-Duquet Street, Quebec, QC, G1N 4K8
Suite #211

