

# 1990 Cyrille-Duquet Street, Quebec, QC, G1N 4K8

## Suite #209C

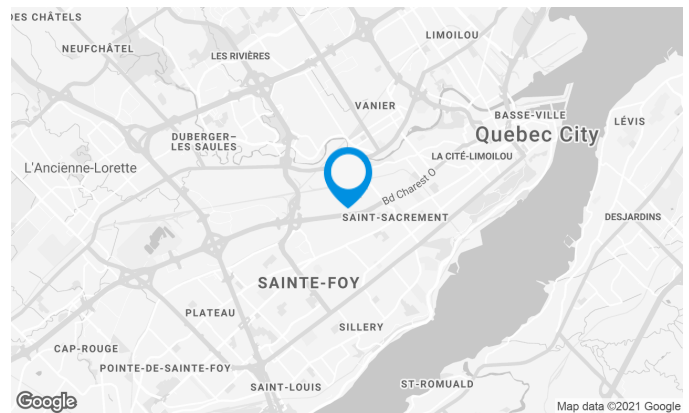
Located at the intersection of the Charest and Robert-Bourassa highways, in a commercial area

### Building characteristics

TOTAL LEASING AREA	25,457 ft <sup>2</sup>
YEAR OF RENOVATION	1996
NUMBER OF FLOORS	2
% COMMON AREA	5
OPTICAL FIBER	Yes
SECURITY	Access card, door schedule

### BUILDING ACCESSIBILITY

ROAD ACCESS	Charest Highway / Saint-Sacrement Avenue
BUS	9



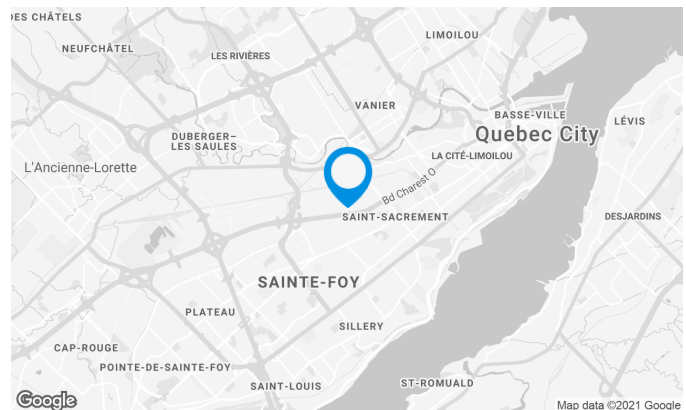
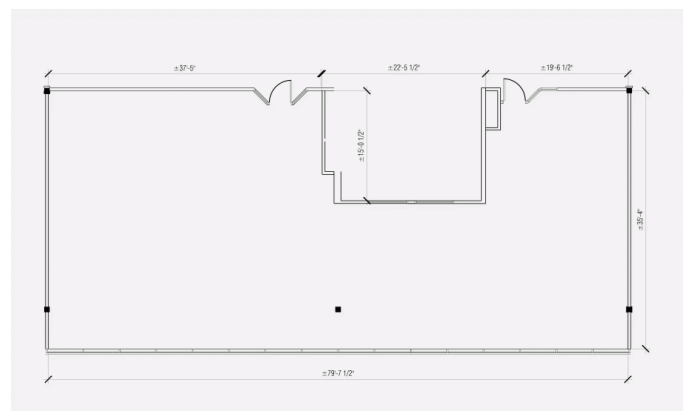
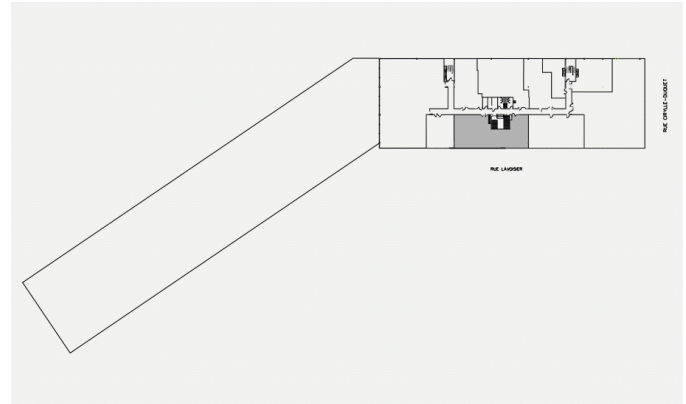
### Location Cominar



T 418 681-6300 #2411  
E LOCATIONQUEBEC@COMINAR.COM

## Space characteristics

AVAILABLE LEASING AREA	2,826 ft <sup>2</sup>
AVAILABILITY	Immediate
NUMBER OF FLOORS	1
FLOOR AREA	45,528 ft <sup>2</sup>

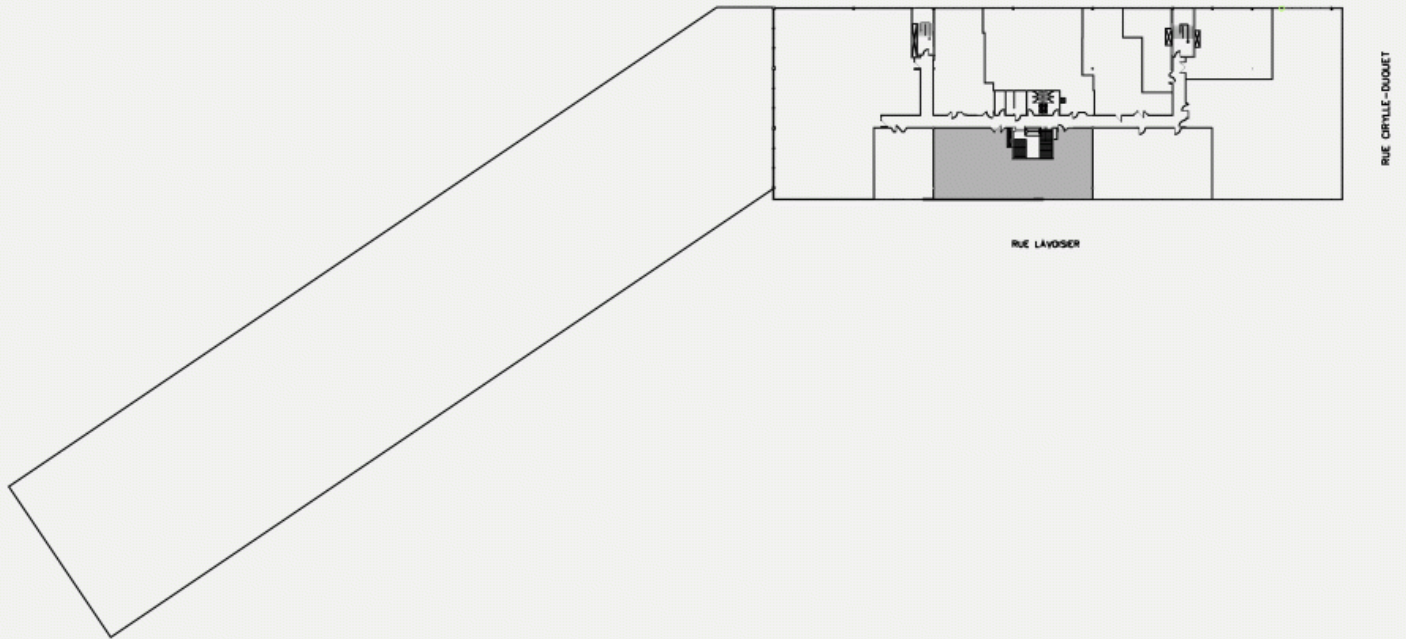


## Location Cominar

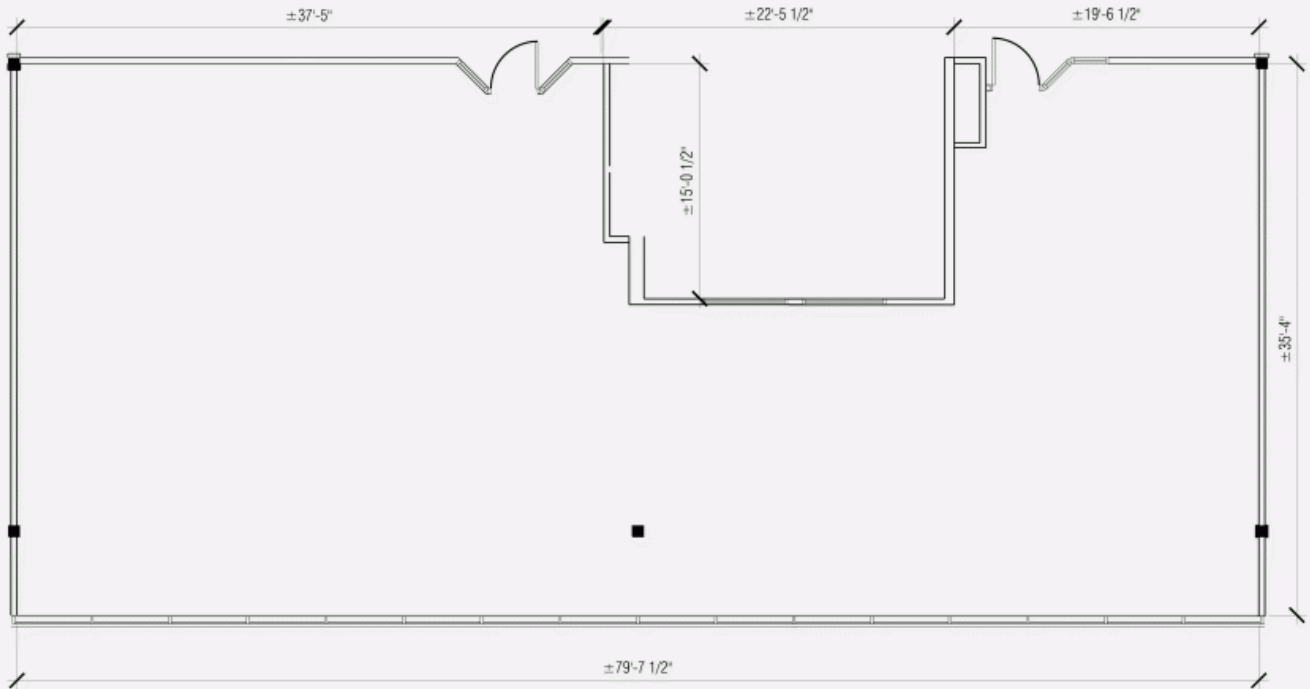


T 418 681-6300 #2411  
 E LOCATIONQUEBEC@COMINAR.COM

LOCATION PLAN



DEVELOPMENT PLAN



**1990 Cyrille-Duquet Street, Quebec, QC, G1N 4K8**  
**Suite #209C**



Building image