

1990 Cyrille-Duquet Street, Quebec, QC, G1N 4K8

Suite #206C

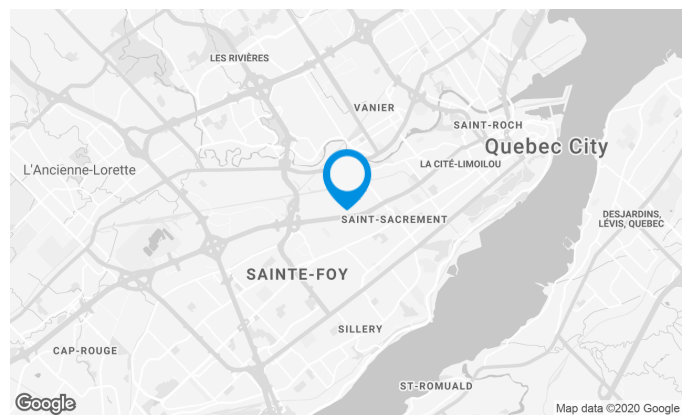
Located at the intersection of the Charest and Robert-Bourassa highways, in a commercial area

Building characteristics

TOTAL LEASING AREA	25,457 ft ²
YEAR OF RENOVATION	1996
NUMBER OF FLOORS	2
% COMMON AREA	5
OPTICAL FIBER	Yes
SECURITY	Access card, door schedule

BUILDING ACCESSIBILITY

ROAD ACCESS	Charest Highway / Saint-Sacrement Avenue
BUS	9



Location Cominar



T 418 681-6300 #2411
E LOCATIONQUEBEC@COMINAR.COM

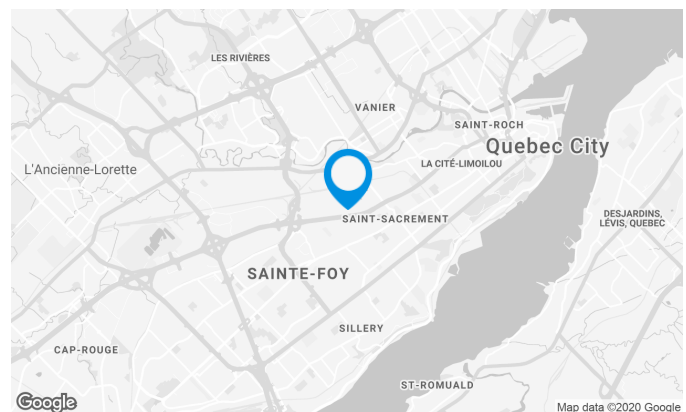
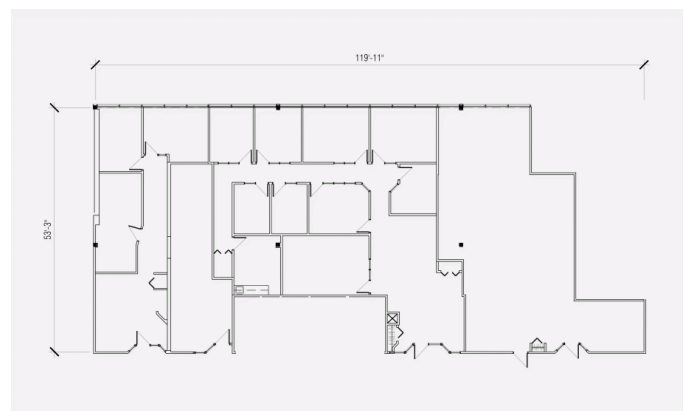
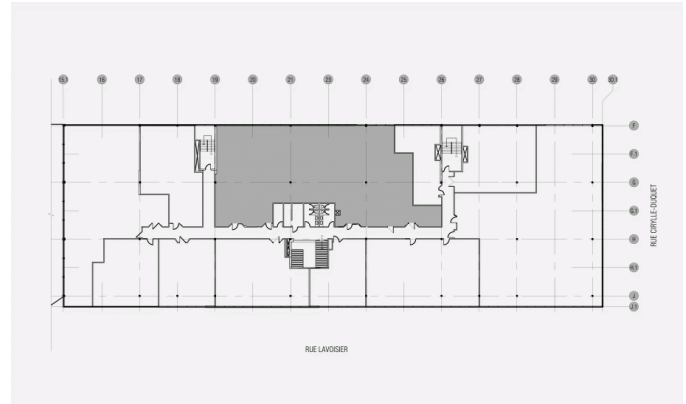
1990 Cyrille-Duquet Street, Quebec, QC, G1N 4K8

Suite #206C

This space represents a consolidation of premises 206-212-216 for a possible area of 5,853 sq. ft.

Space characteristics

AVAILABLE LEASING AREA	5,853 ft ²
AVAILABILITY	Immediate
NUMBER OF FLOORS	1
FLOOR AREA	45,528 ft ²

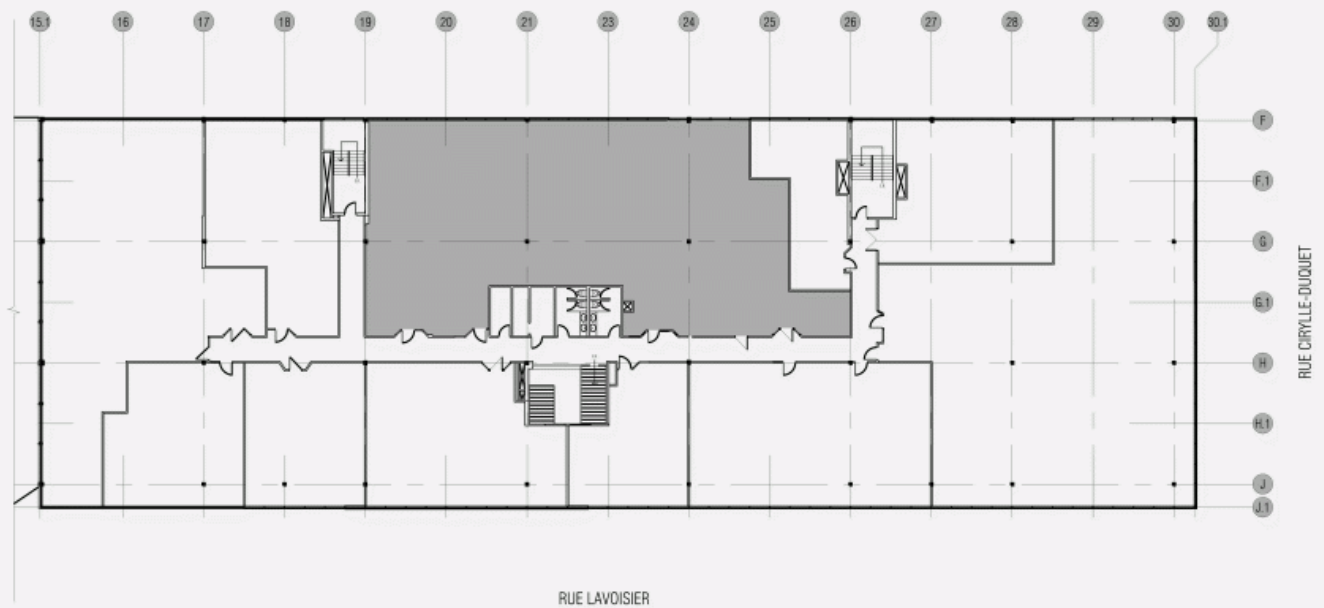


Location Cominar

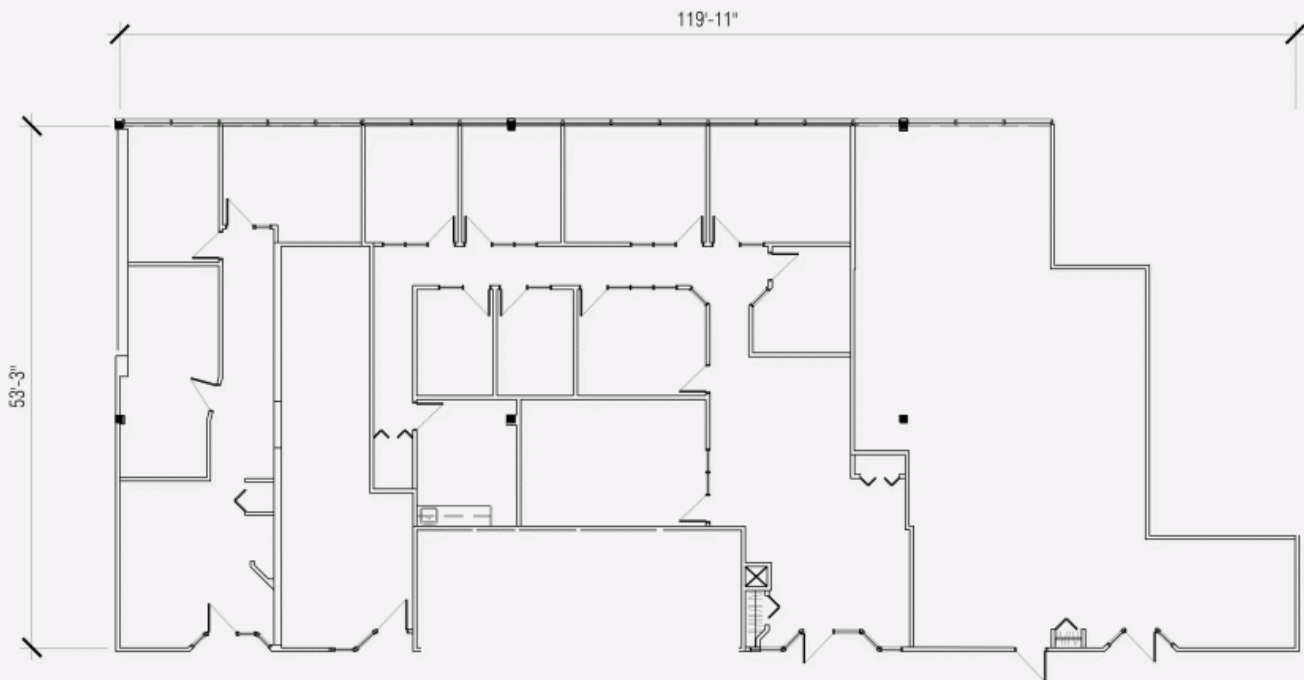


T 418 681-6300 #2411
E LOCATIONQUEBEC@COMINAR.COM

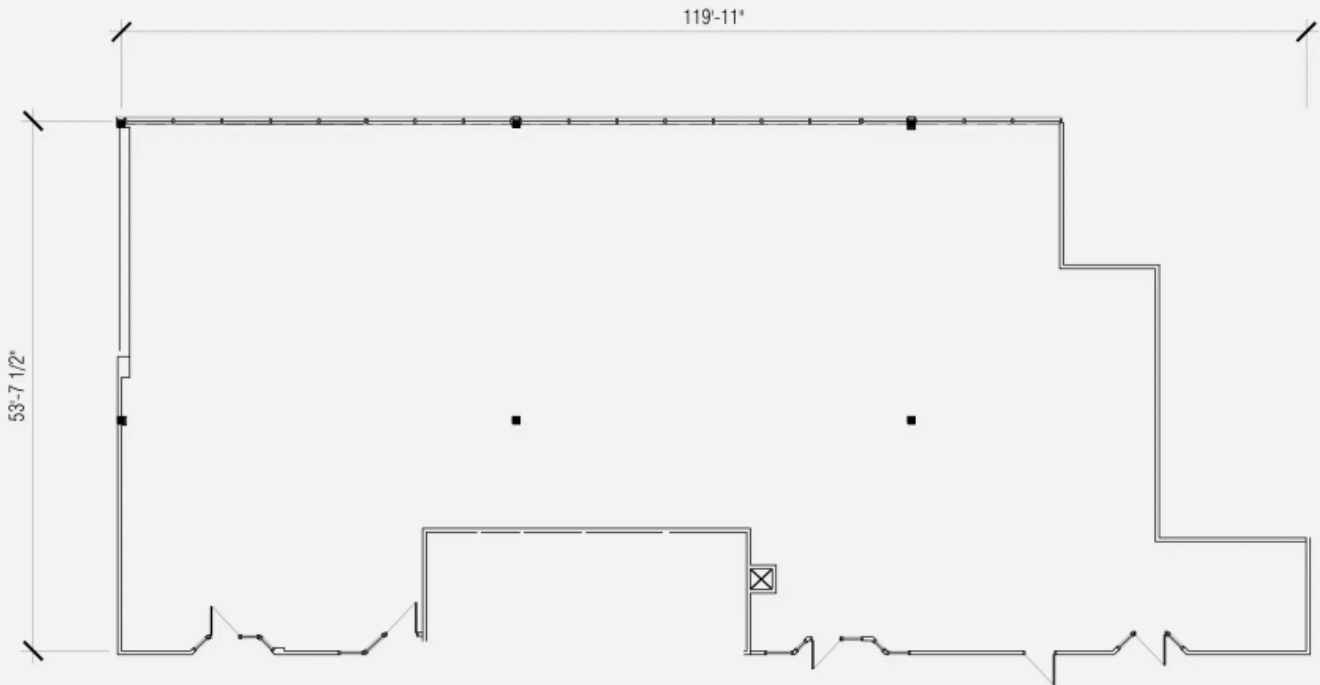
LOCATION PLAN



DEVELOPMENT PLAN



DEVELOPMENT PLAN



1990 Cyrille-Duquet Street, Quebec, QC, G1N 4K8
Suite #206C

