

3300 de la Côte-Vertu Boulevard, Saint-Laurent, QC, H4R 2B7

Suite #203



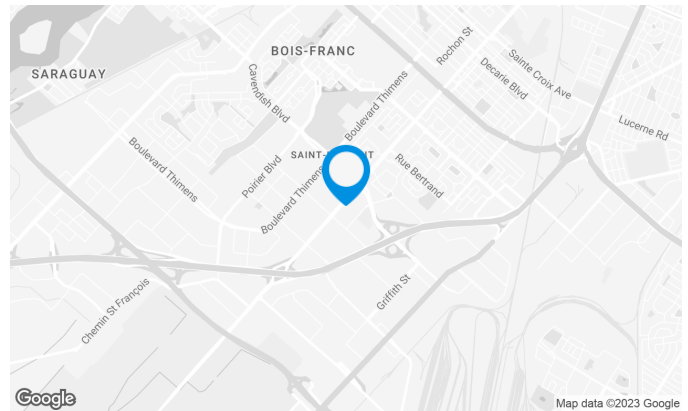
Excellent visibility from the Metropolitan Highway and easy access to Côte-de-Liesse Highway (520). This building is equipped with a magnetic access card system and offers various services such as a bank and a restaurant.

Building characteristics

TOTAL LEASING AREA	98,309 sq. ft.
NUMBER OF FLOORS	4
ASCENCEURS	2
OPTICAL FIBER	Yes
SPRINKLERS	Yes
HVAC HOURS	Monday to Friday: 7 AM to 6 PM
SECURITY	Access cards, cameras
BUILDING SERVICES	Bank, coffee shop

BUILDING ACCESSIBILITY

INDOOR PARKING	80
OUTDOOR PARKING	180
PARC À VÉLOS DISPONIBLE	Yes
ROAD ACCESS	Highway 40, Cavendish Blvd.
BUS	121, 177, 196, 213, 225



Xavier Martin

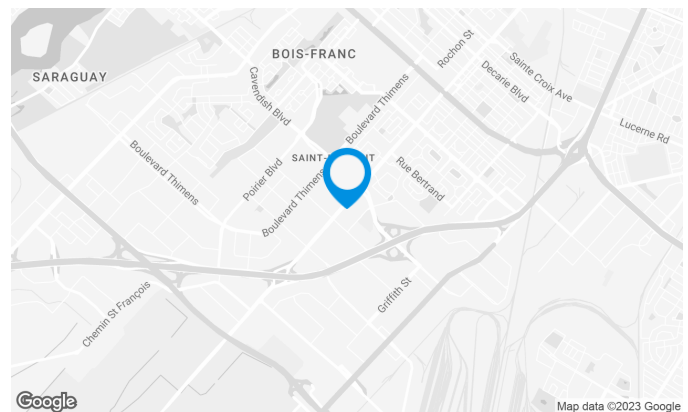
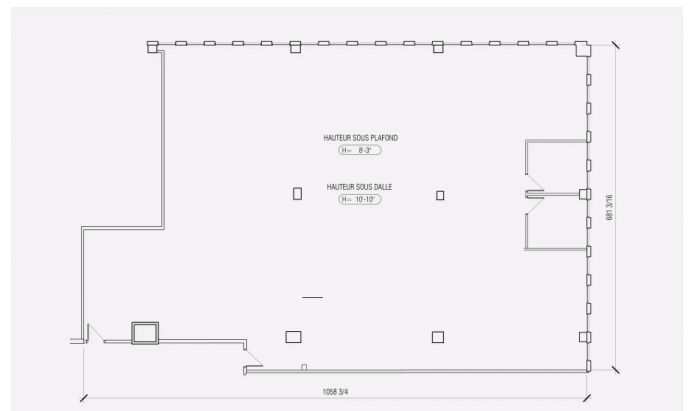
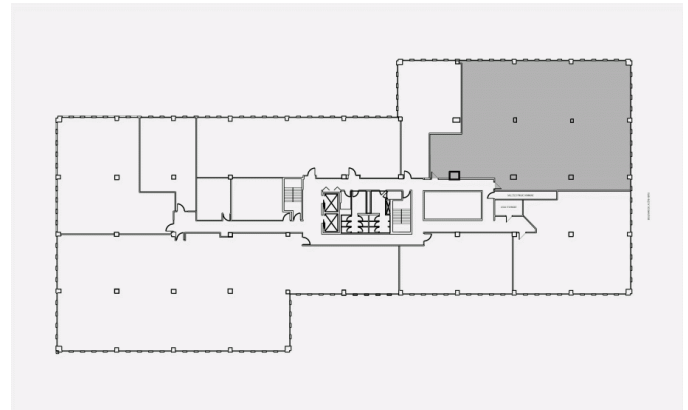
LEASING DIRECTOR
LEASING - OFFICES, MONTREAL AREA

- T** 514 737-3344 #3454
- C** 514 346-3041
- E** XAVIER.MARTIN@COMINAR.COM

**3300 de la Côte-Vertu Boulevard, Saint-Laurent, QC, H4R
2B7
Suite #203**

Space characteristics

AVAILABLE LEASING AREA	5,119 sq. ft.
AVAILABILITY	Immediate
NUMBER OF FLOORS	1
FLOOR AREA	25,000 sq. ft.
ADDITIONAL RENT	\$14.28 /sq. ft.
ENERGY	Included
COMMENTS / NOTES	This local is in base building.

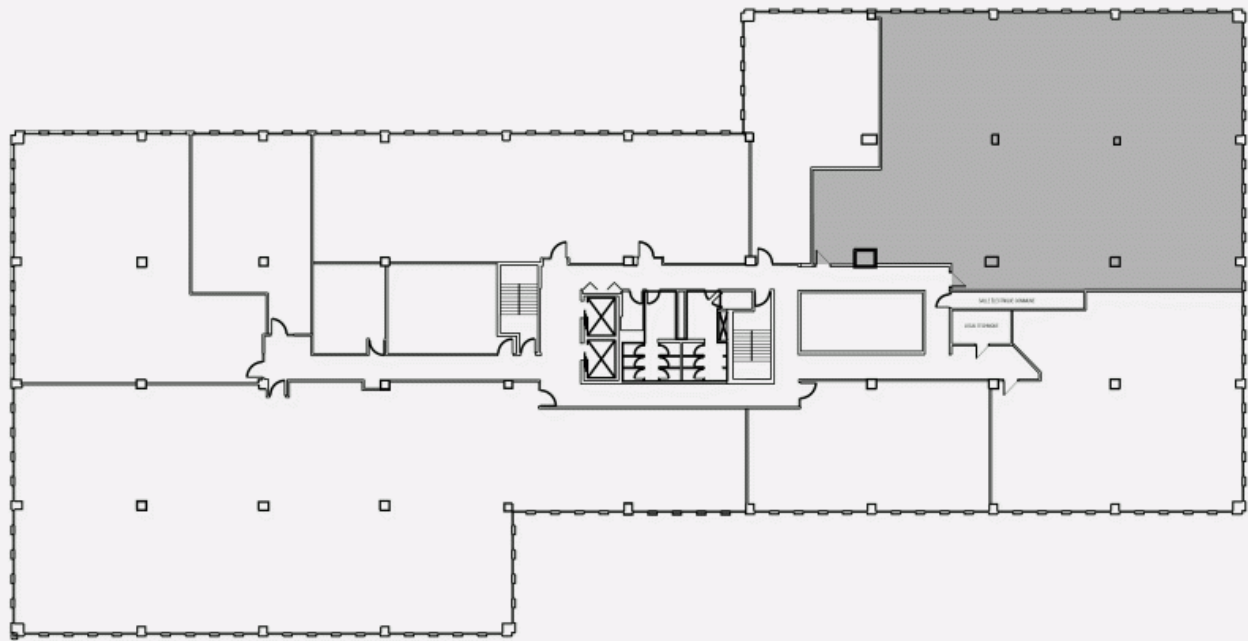


Xavier Martin

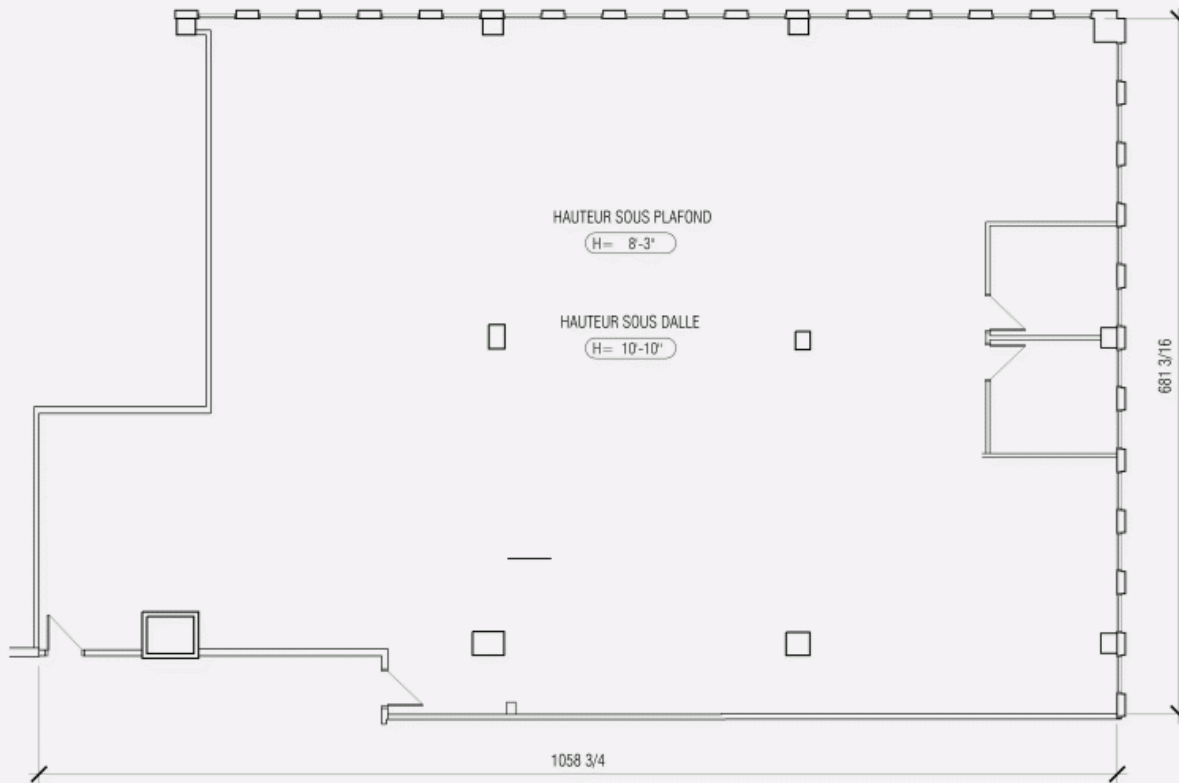
LEASING DIRECTOR
LEASING - OFFICES, MONTREAL AREA

T 514 737-3344 #3454
C 514 346-3041
E XAVIER.MARTIN@COMINAR.COM

LOCATION PLAN



LAYOUT PLAN



**3300 de la Côte-Vertu Boulevard, Saint-Laurent, QC, H4R
2B7
Suite #203**

