

Beautiful 5 storey building built in 1998. Located in Bells Corner between Roberston Road and Moody Drive.

## Building characteristics

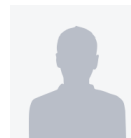
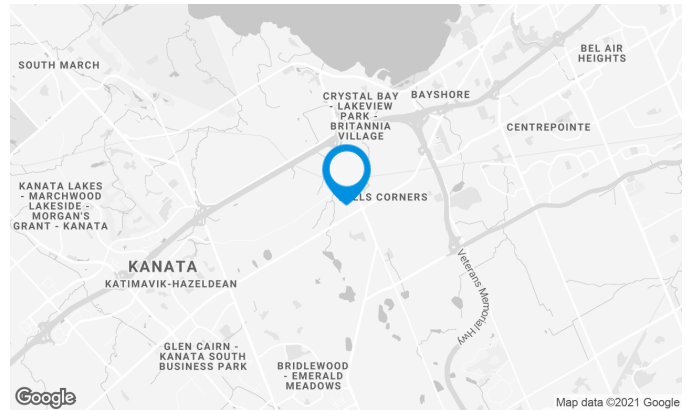
TOTAL LEASING AREA	114,119 ft <sup>2</sup>
YEAR OF CONSTRUCTION	1998
NUMBER OF FLOORS	5
ELEVATORS	2
SPRINKLERS	Yes
GENERATOR	Yes
HVAC HOURS	from 6 am to 6 pm
SECURITY	Access card in place giving access 24/7 to card holder.

## BUILDING ACCESSIBILITY

OUTDOOR PARKING	461
-----------------	-----

## AWARDS

Boma Best



**Marie-Claude Mercier-Dion**

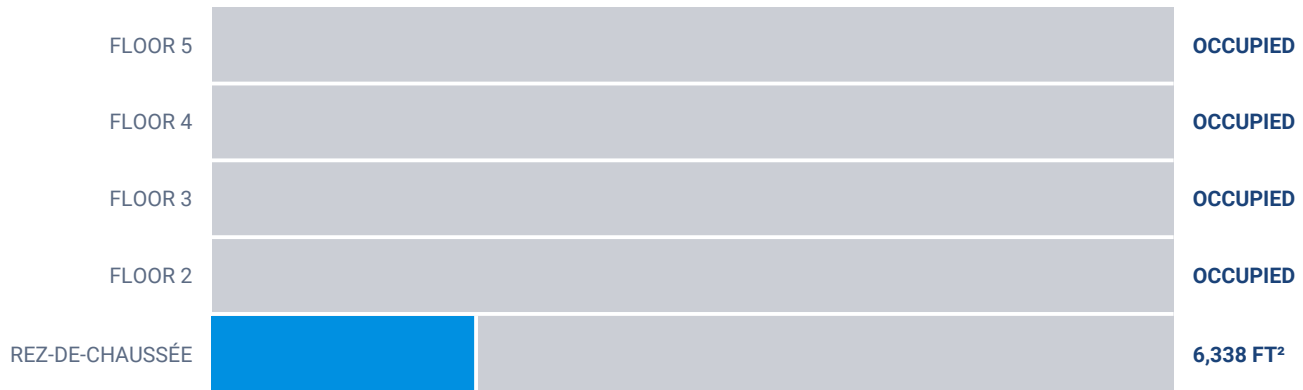
LEASING COORDINATOR  
LEASING - OFFICES

**T** 613 234-4416 #8430

**C** 343 551-8669

**E** MARIE-CLAUDE.MERCIER-DION@COMINAR.COM

**Superficie locative disponible de 6,338 ft<sup>2</sup>**

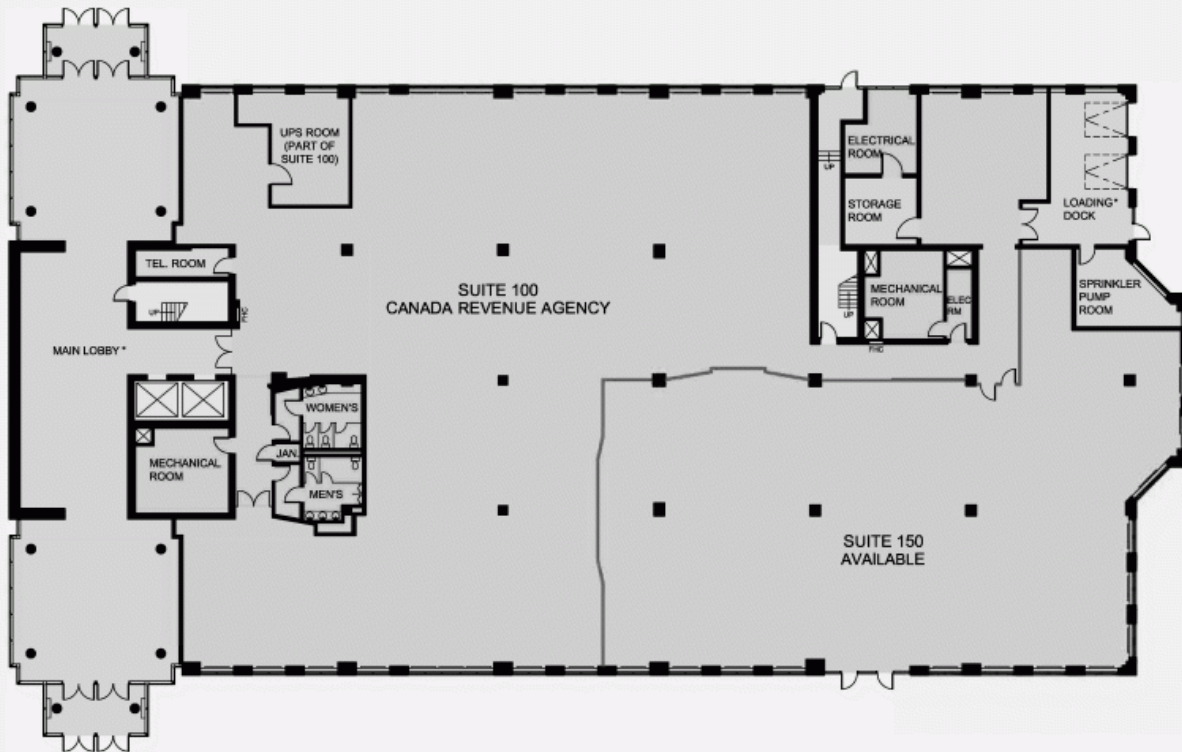


List of available offices

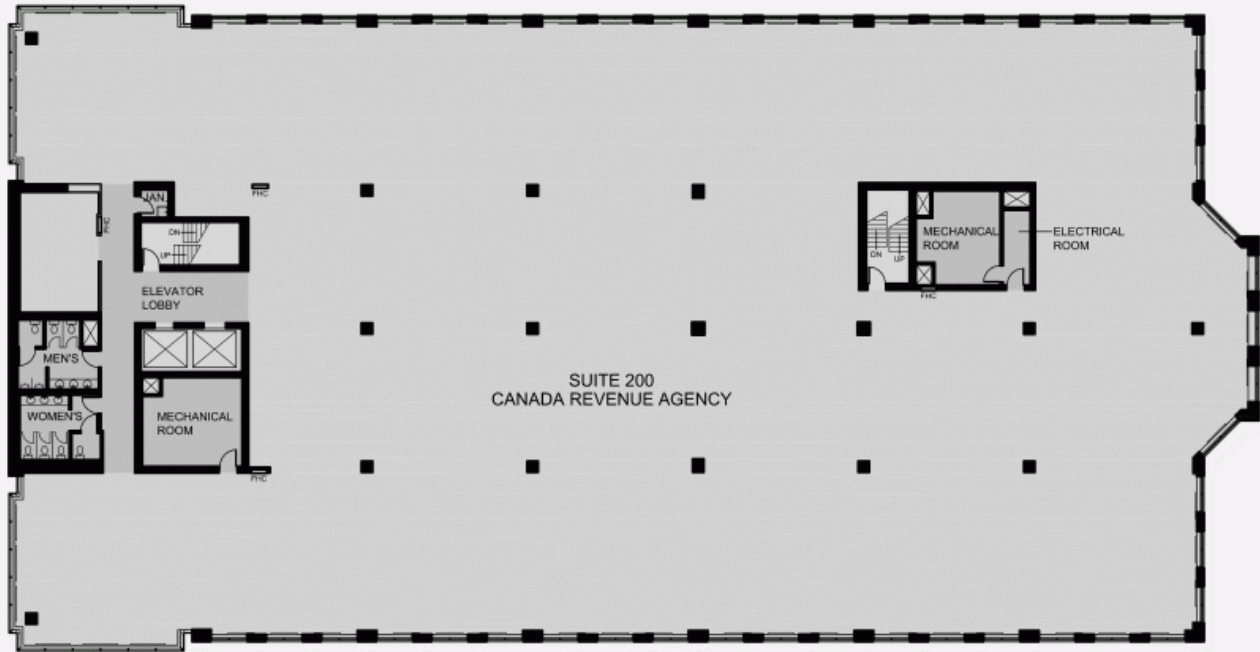
SUITE	FLOOR	AVAILABILITY	AREA
Suite #150	RDC	Immediate	6,338 ft <sup>2</sup>



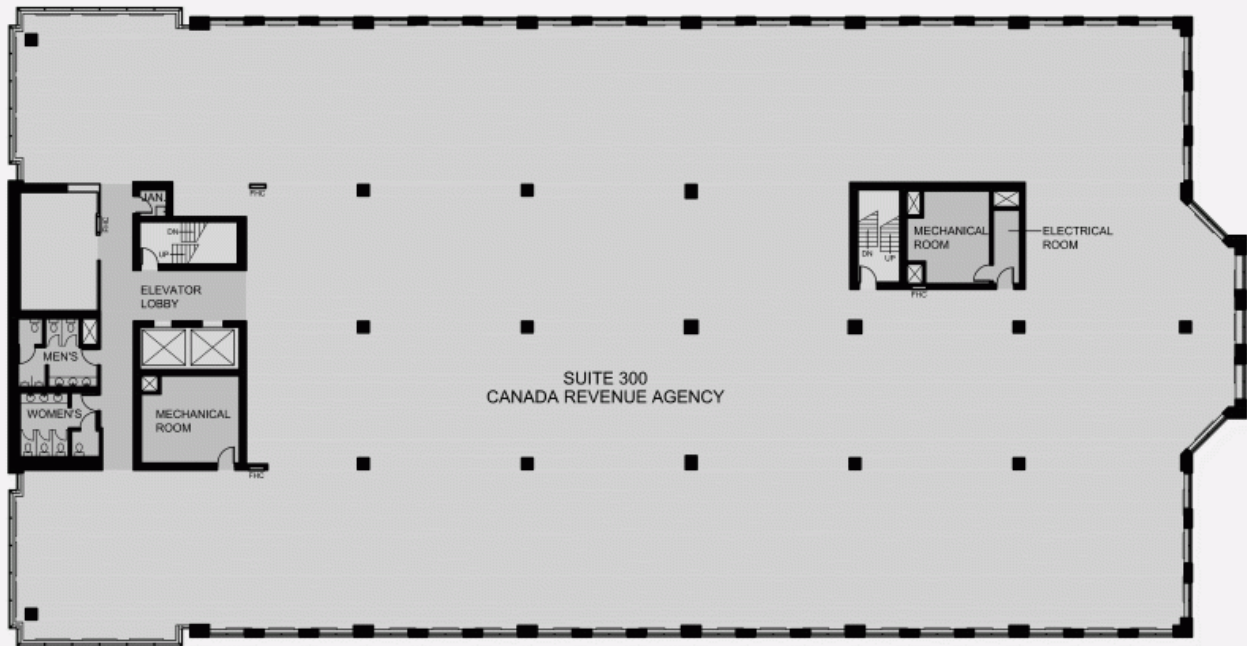
RDC PLAN



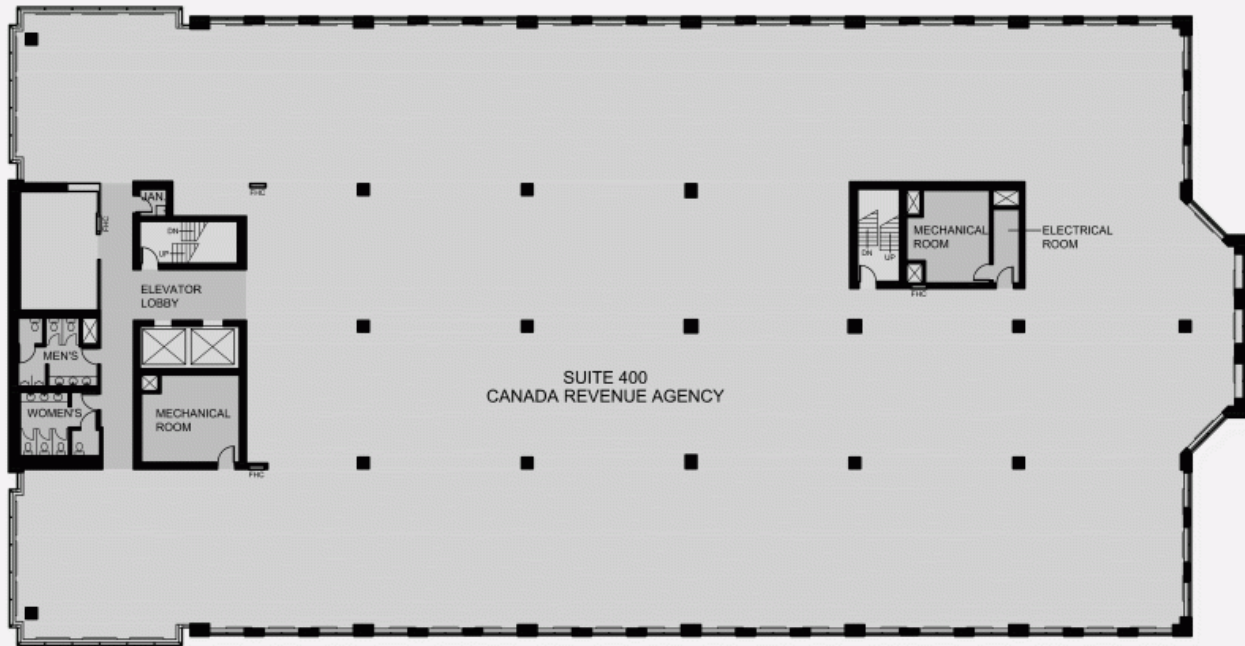
FLOOR 2 PLAN



FLOOR 3 PLAN



FLOOR 4 PLAN



FLOOR 5 PLAN

