

171 Slater Street, Ottawa, ON, K1P 5H7

Suite #200

Located in the downtown core between Slater Street and Albert Street. The building is convenient for shopping (Rideau), and is close to major hotels, government offices, gourmet restaurants and Parliament Hill.

Building characteristics

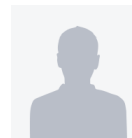
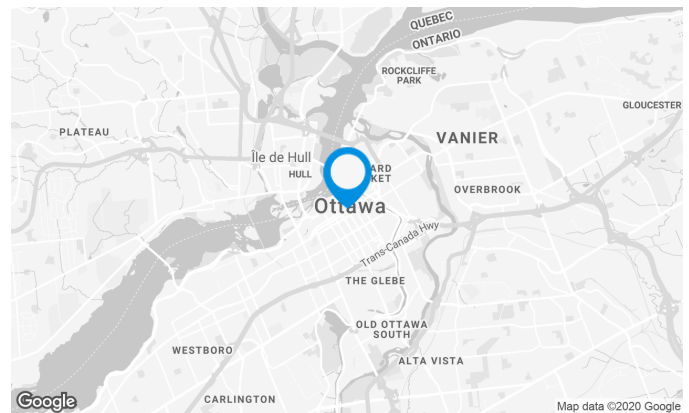
TOTAL LEASING AREA	152,000 ft ²
YEAR OF RENOVATION	2000
YEAR OF CONSTRUCTION	1962
NUMBER OF FLOORS	13
ASCENCEURS	4
SPRINKLERS	Yes
GENERATOR	Yes
HVAC HOURS	The building opens from 6 am to 6 pm Monday to Friday.
SECURITY	Manned security lobby from 4pm to 8 am - Security Camera DVR recorded. There is an access card system in place providing 24/7
BUILDING SERVICES	There is a Tim Hortons on the ground floor with access thru the lobby.

BUILDING ACCESSIBILITY

INDOOR PARKING	37
BUS	Main bus lines on Albert and Slater
TRAIN STATION	Coming up in November 20 2018

AWARDS

Boma Best



John Esposito

LEASING MANAGER
LEASING - OFFICES, ONTARIO AREA

T 613 234-4416 #8428

C 613 408-5430

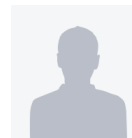
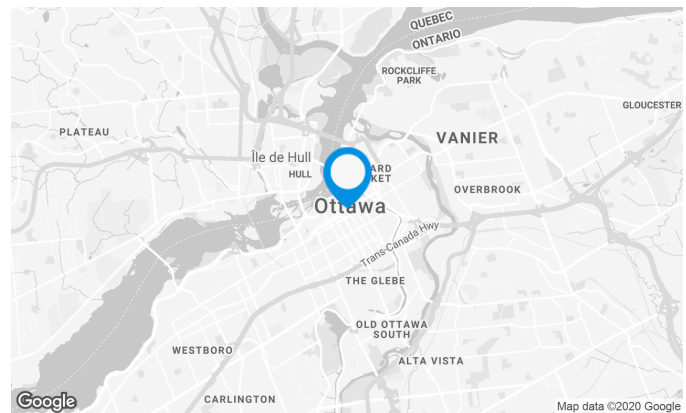
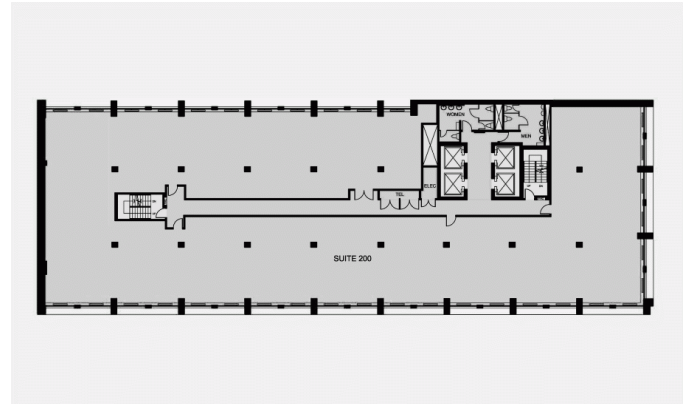
E JOHN.ESPOSITO@COMINAR.COM

171 Slater Street, Ottawa, ON, K1P 5H7 Suite #200

Full floor that will be available in October 2018.

Space characteristics

AVAILABLE LEASING AREA	12,401 ft ²
AVAILABILITY	Immediate
NUMBER OF FLOORS	1
FLOOR AREA	13,000 ft ²
HEIGHT	10'6"
ADDITIONAL RENT	\$15.83 /ft ²
ENERGY	Included
YEAR OF RENOVATION	2000

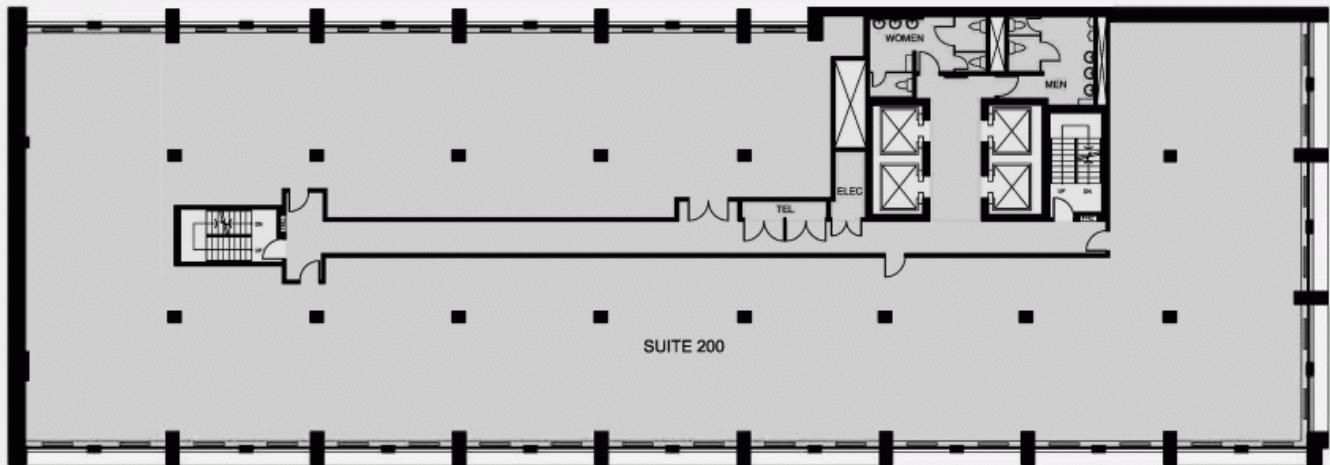


John Esposito

LEASING MANAGER
LEASING - OFFICES, ONTARIO AREA

T 613 234-4416 #8428
C 613 408-5430
E JOHN.ESPOSITO@COMINAR.COM

PLAN - 1



171 Slater Street, Ottawa, ON, K1P 5H7
Suite #200

