

# 110 O'Connor Street, Ottawa, ON, K1P 5M9

## Suite #1000



14-storey building with ground floor retail. Located near downtown core between Slater Street and Laurier Avenue West. The building is close to shopping areas, major hotels, government offices, gourmet restaurants and Parliament Hill.

### Building characteristics

TOTAL LEASING AREA	189,000 ft <sup>2</sup>
YEAR OF RENOVATION	1999-2011
YEAR OF CONSTRUCTION	1970
NUMBER OF FLOORS	14
ASCENCEURS	4
SPRINKLERS	Yes
GENERATOR	Yes
HVAC HOURS	The building doors are open from 6 am to 6 pm Monday to Friday.
SECURITY	Card swipe control access to the building

### BUILDING ACCESSIBILITY

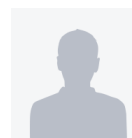
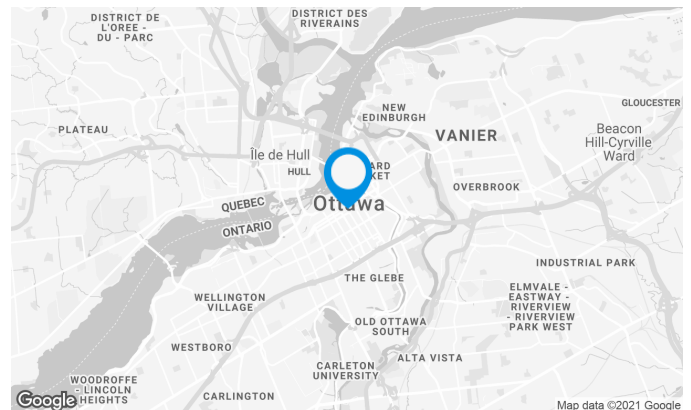
INDOOR PARKING	99
BUS	The major bus stations are on Albert and Slater Street.
TRAIN STATION	The Parliament LRT Station will be less than 400 meters from the property.

### AWARDS

Boma Best



For Illustration Purposes On



**John Esposito**

LEASING MANAGER  
LEASING - OFFICES, ONTARIO AREA

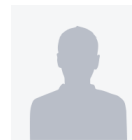
**T** 613 234-4416 #8428  
**C** 613 408-5430  
**E** JOHN.ESPOSITO@COMINAR.COM

# 110 O'Connor Street, Ottawa, ON, K1P 5M9 Suite #1000



## Space characteristics

AVAILABLE LEASING AREA	15,112 ft <sup>2</sup>
AVAILABILITY	Immediate
NUMBER OF FLOORS	1
FLOOR AREA	15,112 ft <sup>2</sup>
ADDITIONAL RENT	\$13.95 /ft <sup>2</sup>
ENERGY	Included



**John Esposito**

LEASING MANAGER  
LEASING - OFFICES, ONTARIO AREA

**T** 613 234-4416 #8428

**C** 613 408-5430

**E** JOHN.ESPOSITO@COMINAR.COM



For illustration purposes only - lobby Rendering



For illustration purposes only - Lobby Rendering



For illustration purposes only - Lobby Rendering