

1000 Saint-Jean Boulevard, Pointe-Claire, QC, H9R 5P1

Suite #105

The 1000 Saint-Jean is located on a central point in Pointe-Claire. Surrounded by many services, the building has good accessibility, either by public transport or by major highways.

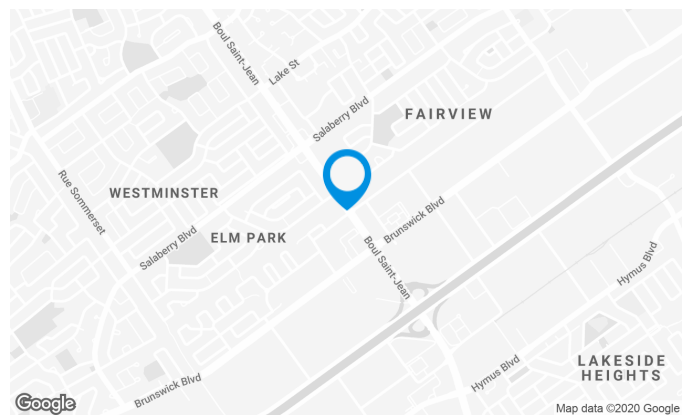
Easy access to some services on the ground floor of the building: restaurants, government services and banking. A large parking lot in front of the building is available for employees.

Building characteristics

TOTAL LEASING AREA	110,221 ft ²
NUMBER OF FLOORS	7
ASCENCEURS	2
OPTICAL FIBER	Yes
SPRINKLERS	Yes
GENERATOR	Yes
SECURITY	Acces cards and cameras
BUILDING SERVICES	Restaurants, convenience store, bank

BUILDING ACCESSIBILITY

INDOOR PARKING	35
OUTDOOR PARKING	380
ROAD ACCESS	Brunswick Boulevard, De Salaberry Blvd., Saint-Jean Blvd., Trans-Canada Highway
BUS	200, 201, 202, 203, 204, 208, 2015, 216, 225, 419
TRAIN STATION	Vaudreuil-Hudson line, Station: Pointe Claire (4.1 km)



Xavier Martin

LEASE AGENT
LEASING - OFFICES

T 514 737-3344 #3454
C 514 346-3041
E XAVIER.MARTIN@COMINAR.COM

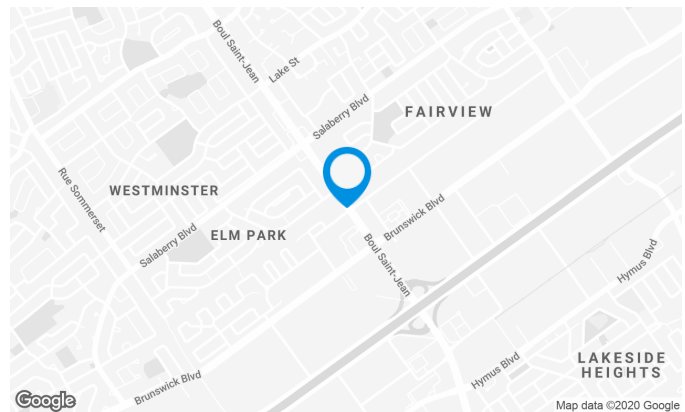
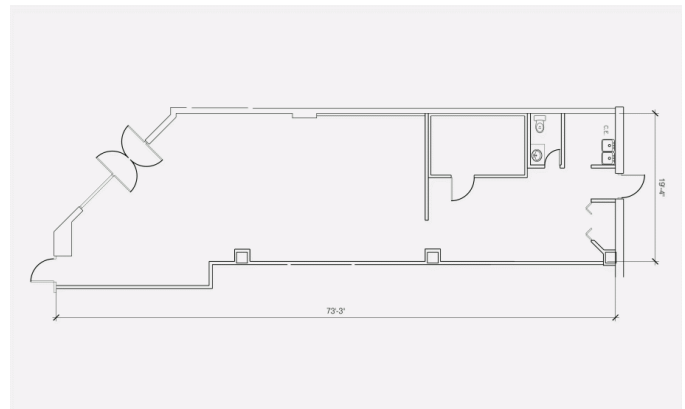
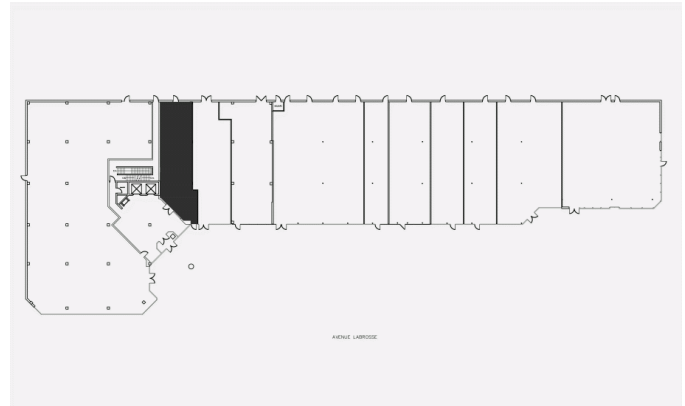
1000 Saint-Jean Boulevard, Pointe-Claire, QC, H9R 5P1

Suite #105



Space characteristics

AVAILABLE LEASING AREA	1,415 ft ²
AVAILABILITY	Immediate
FLOOR AREA	13,500 ft ²
ADDITIONAL RENT	\$12.62 /ft ²
COMMENTS / NOTES	Commercial space Energy payable directly by the tenant to the suppliers

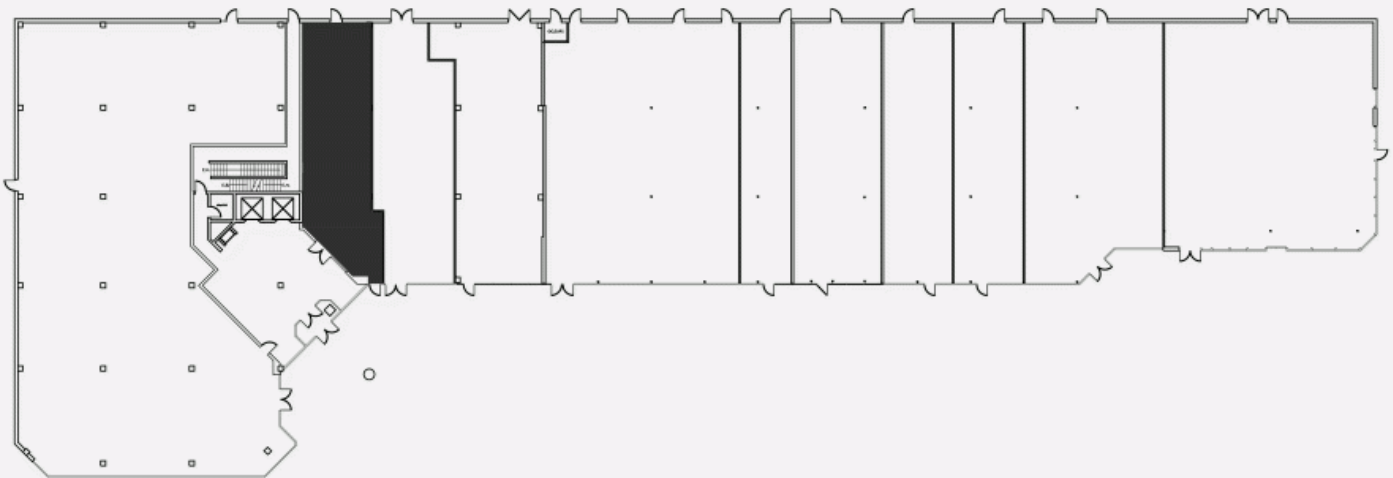


Xavier Martin

LEASE AGENT
LEASING - OFFICES

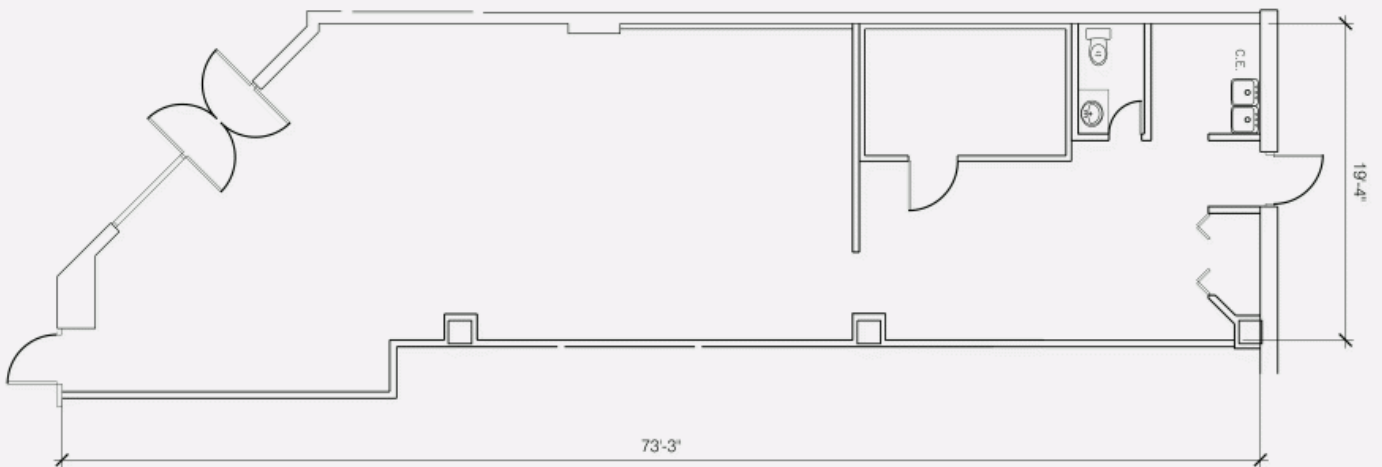
T 514 737-3344 #3454
C 514 346-3041
E XAVIER.MARTIN@COMINAR.COM

LOCATION PLAN



AVENUE LABROSSE

LAYOUT PLAN



1000 Saint-Jean Boulevard, Pointe-Claire, QC, H9R 5P1
Suite #105

