

The 1000 Saint-Jean is located on a central point in Pointe-Claire. Surrounded by many services, the building has good accessibility, either by public transport or by major highways.

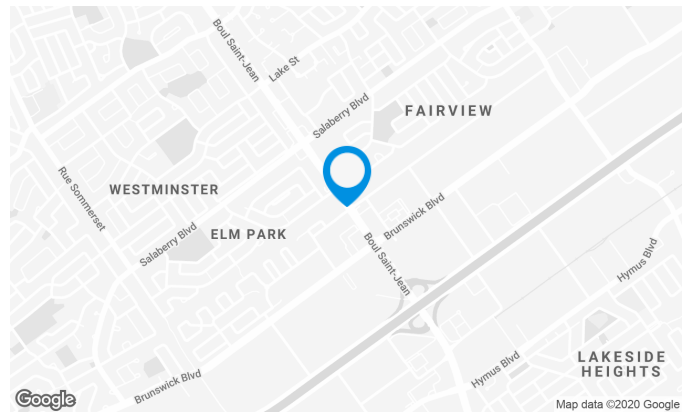
Easy access to some services on the ground floor of the building: restaurants, government services and banking. A large parking lot in front of the building is available for employees.

Building characteristics

TOTAL LEASING AREA	110,221 ft ²
NUMBER OF FLOORS	7
ELEVATORS	2
OPTICAL FIBER	Yes
SPRINKLERS	Yes
GENERATOR	Yes
SECURITY	Acces cards and cameras
BUILDING SERVICES	Restaurants, convenience store, bank

BUILDING ACCESSIBILITY

INDOOR PARKING	35
OUTDOOR PARKING	380
ROAD ACCESS	Brunswick Boulevard, De Salaberry Blvd., Saint-Jean Blvd., Trans-Canada Highway
BUS	200, 201, 202, 203, 204, 208, 2015, 216, 225, 419
TRAIN STATION	Vaudreuil-Hudson line, Station: Pointe Claire (4.1 km)

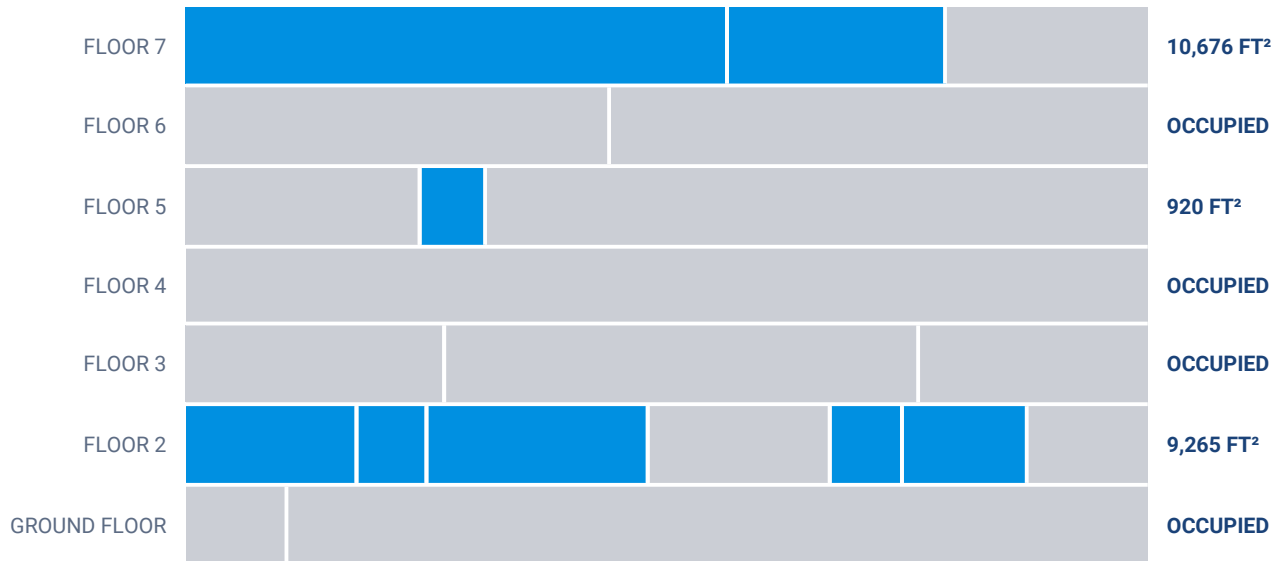


Xavier Martin

LEASE AGENT
LEASING - OFFICES

T 514 737-3344 #3454
C 514 346-3041
E XAVIER.MARTIN@COMINAR.COM

Available leasing areas from 920 ft² to 7,610 ft²



List of available offices

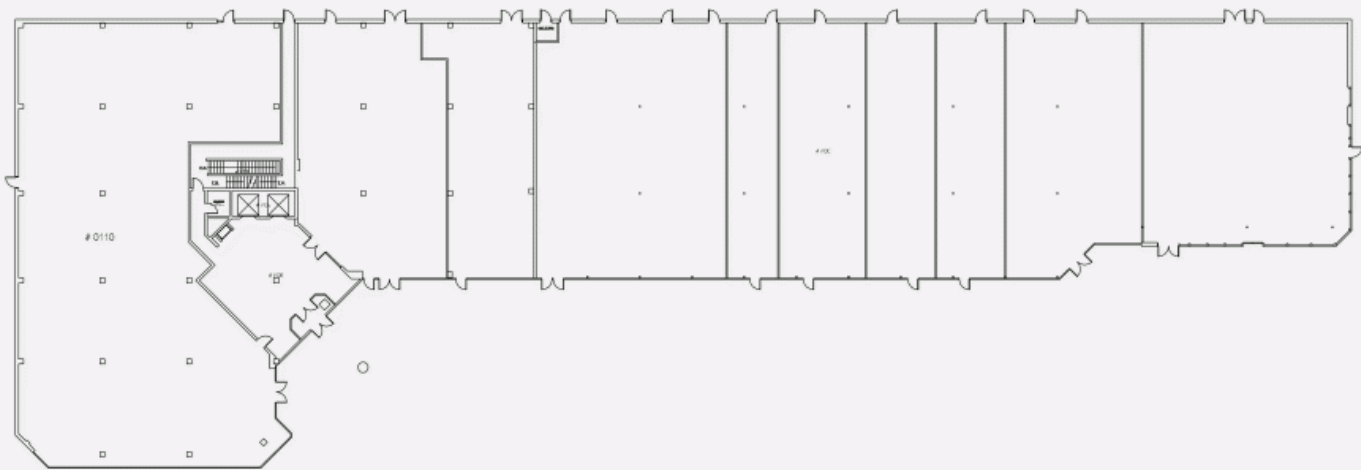
SUITE	FLOOR	AVAILABILITY	AREA
Suite #105	RDC		1,415 ft ²
Suite #203	2	January 2021	1,755 ft ²
Suite #205	2	Immediate	1,015 ft ²
Suite #200	2	Immediate	2,400 ft ²
Suite #202	2	Immediate	984 ft ²
Suite#204	2	Immediate	3,111 ft ²
Suite #206	2		2,560 ft ²
Suite #319	3		6,665 ft ²

List of available offices

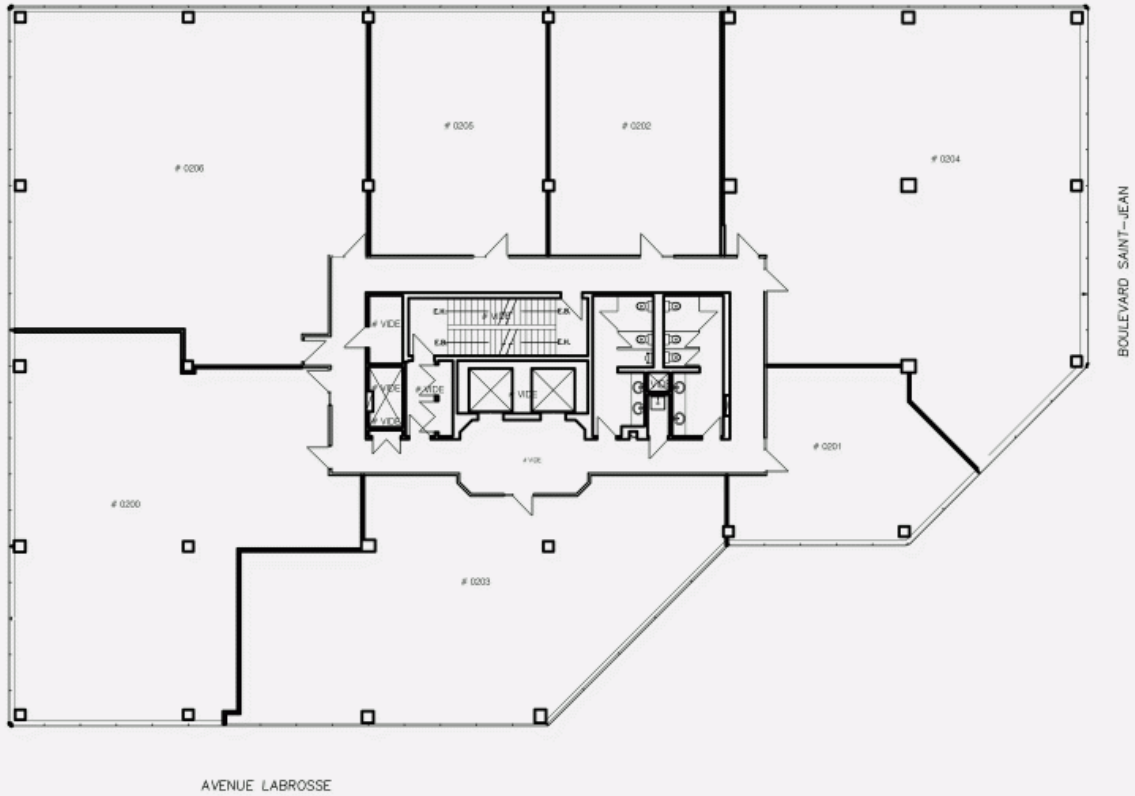
SUITE	FLOOR	AVAILABILITY	AREA
Suite #311-319	3		10,421 ft ²
Suite #311	3		3,633 ft ²
Suite #505	5	Immediate	920 ft ²
Suite #510	5		3,288 ft ²
Suite #610	6		5,952 ft ²
Suite #703	7	Immediate	3,066 ft ²
Suite #715	7	Immediate	7,610 ft ²



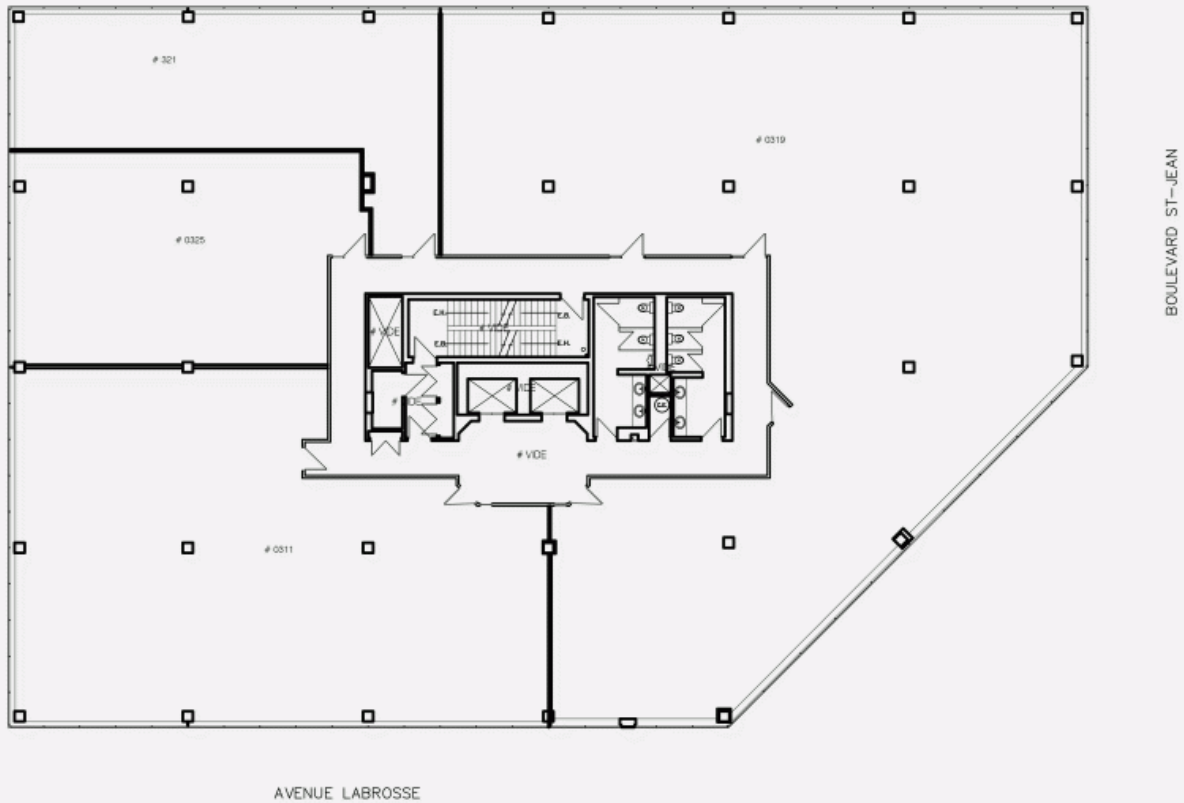
GROUND FLOOR PLAN



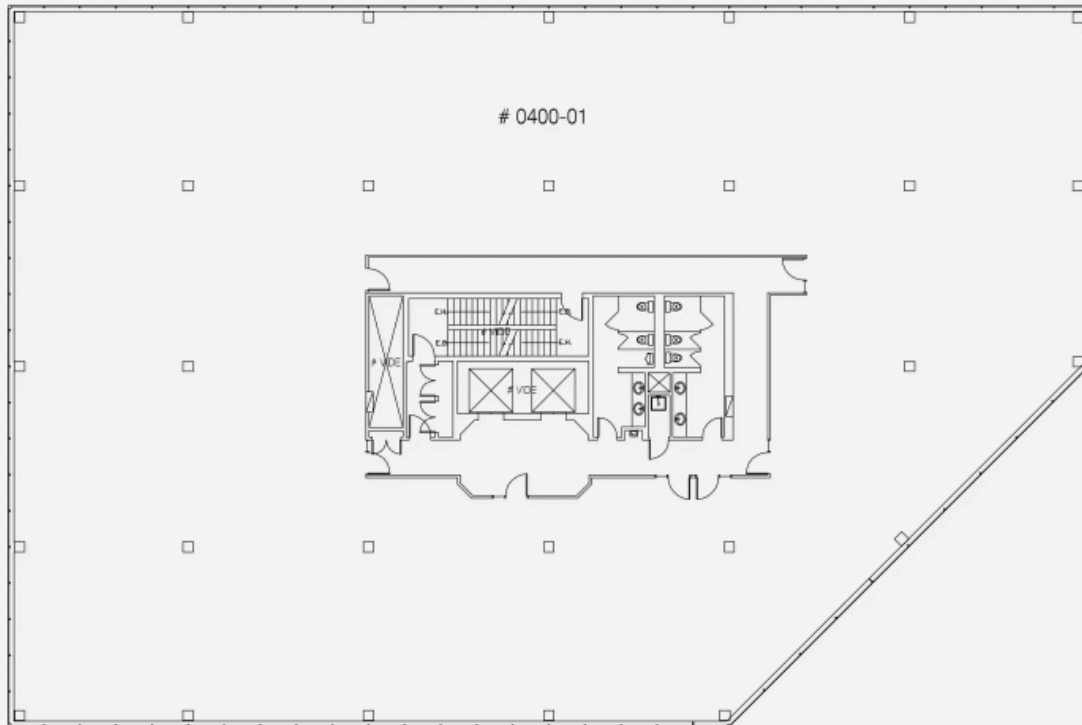
2ND FLOOR PLAN



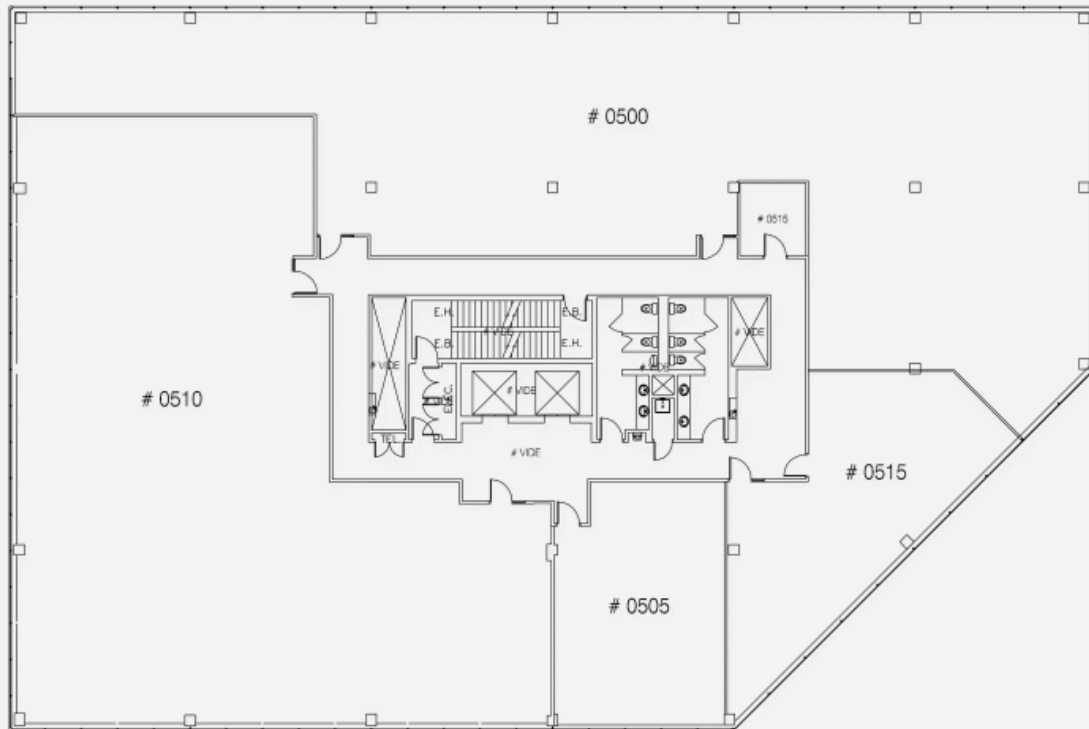
3RD FLOOR PLAN



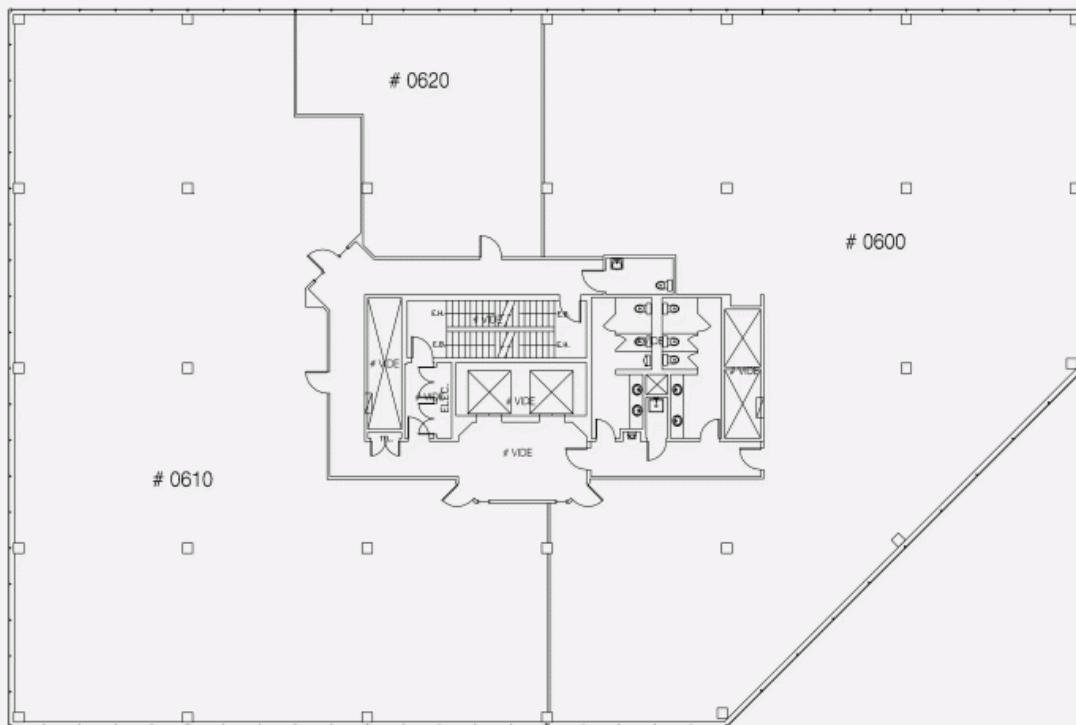
4TH FLOOR PLAN



5TH FLOOR PLAN



6TH FLOOR PLAN



7TH FLOOR PLAN

