

7400 des Galeries-d'Anjou Boulevard, Montreal, QC, H1M 3M2



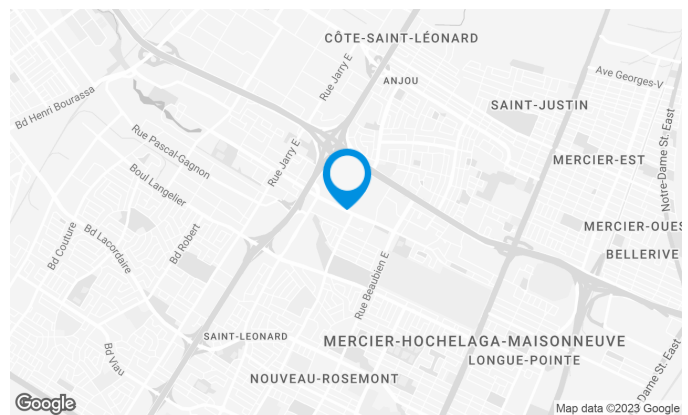
Strategic location at the intersection of highways 40 & 25 makes it easily accessible. Across the street from Galeries d'Anjou Shopping Centre. Bus service at doorstep and minutes away from the Radisson metro station.

Building characteristics

TOTAL LEASING AREA	116,308 sq. ft.
NUMBER OF FLOORS	6
ELEVATORS	3
% COMMON AREA	11
OPTICAL FIBER	Yes
SPRINKLERS	Yes
GENERATOR	Yes
HVAC HOURS	Monday to Friday: 7:30 AM to 6:30 PM
SECURITY	Access cards and cameras
BUILDING SERVICES	Picnic table

BUILDING ACCESSIBILITY

INDOOR PARKING	25
OUTDOOR PARKING	128
PARC À VÉLOS DISPONIBLE	Yes
BUS	1, 44, 260
METRO STATION	Radisson
TRAIN STATION	Anjou Station



Xavier Martin

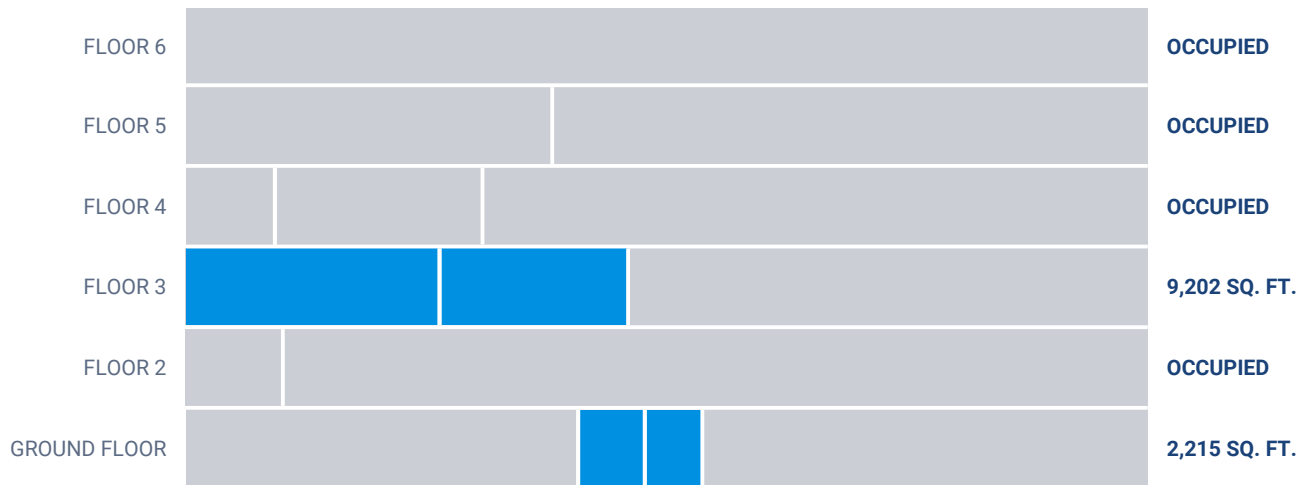
LEASING DIRECTOR
LEASING - OFFICES, MONTREAL AREA

T 514 737-3344 #3454

C 514 346-3041

E XAVIER.MARTIN@COMINAR.COM

Available leasing areas from 1,027 sq. ft. to 5,279 sq. ft.



List of available offices

SUITE	FLOOR	AVAILABILITY	AREA
Suite #130R	RDC	Immediate	1,027 sq. ft.
Suite #B-100	RDC	30 jours	1,188 sq. ft.
Suite #130	RDC		7,000 sq. ft.
Suite #315	2		1,839 sq. ft.
Suite #330	3	Immediate	5,279 sq. ft.
Suite #310	3	Immediate	3,923 sq. ft.
Suite #540-550	4		6,169 sq. ft.
Suite #540	4		1,851 sq. ft.
Suite #550	4		4,318 sq. ft.

7400 des Galeries-d'Anjou Boulevard, Montreal, QC, H1M 3M2



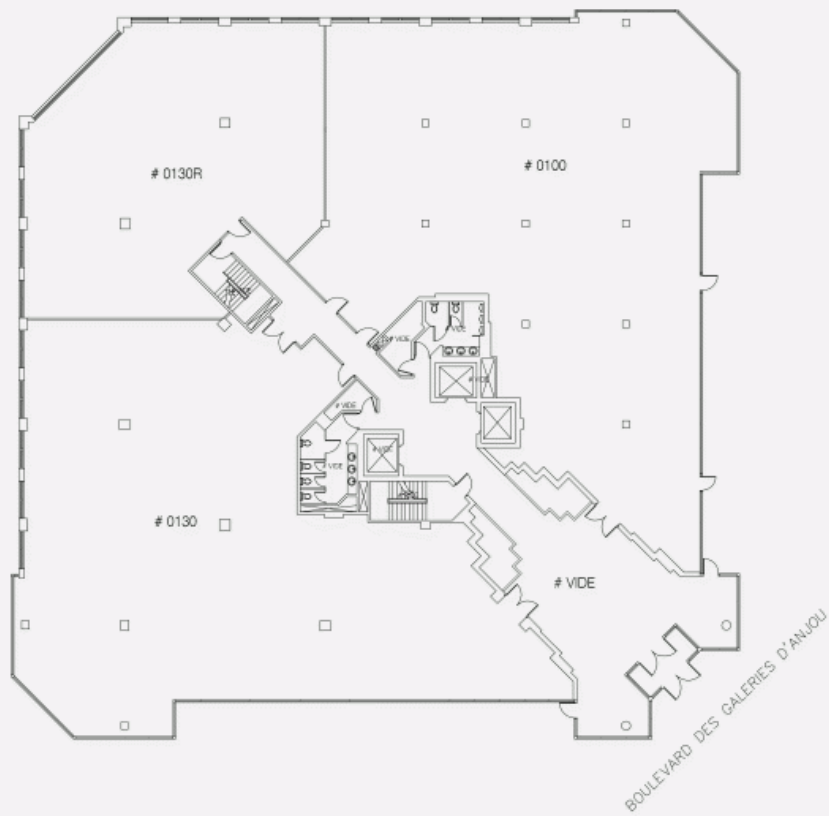
List of available offices

SUITE	FLOOR	AVAILABILITY	AREA
Suite #600	5		7,621 sq. ft.

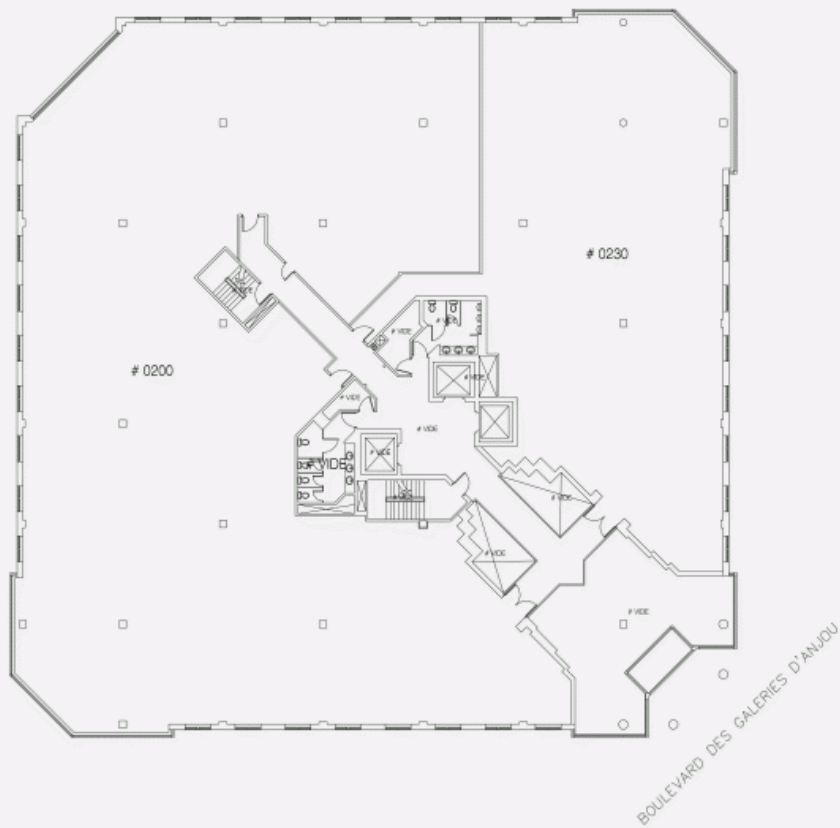
**7400 des Galeries-d'Anjou Boulevard, Montreal, QC, H1M
3M2**



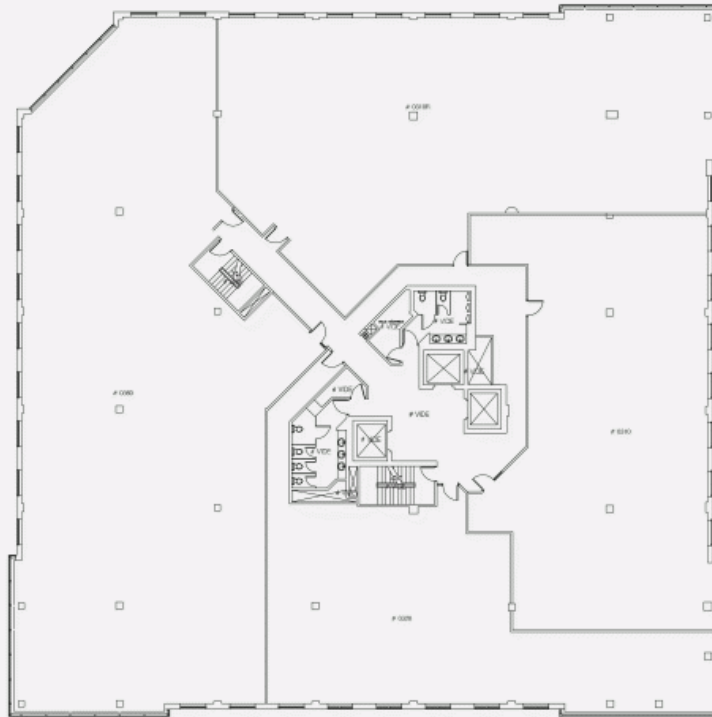
RDC PLAN



FLOOR 2 PLAN

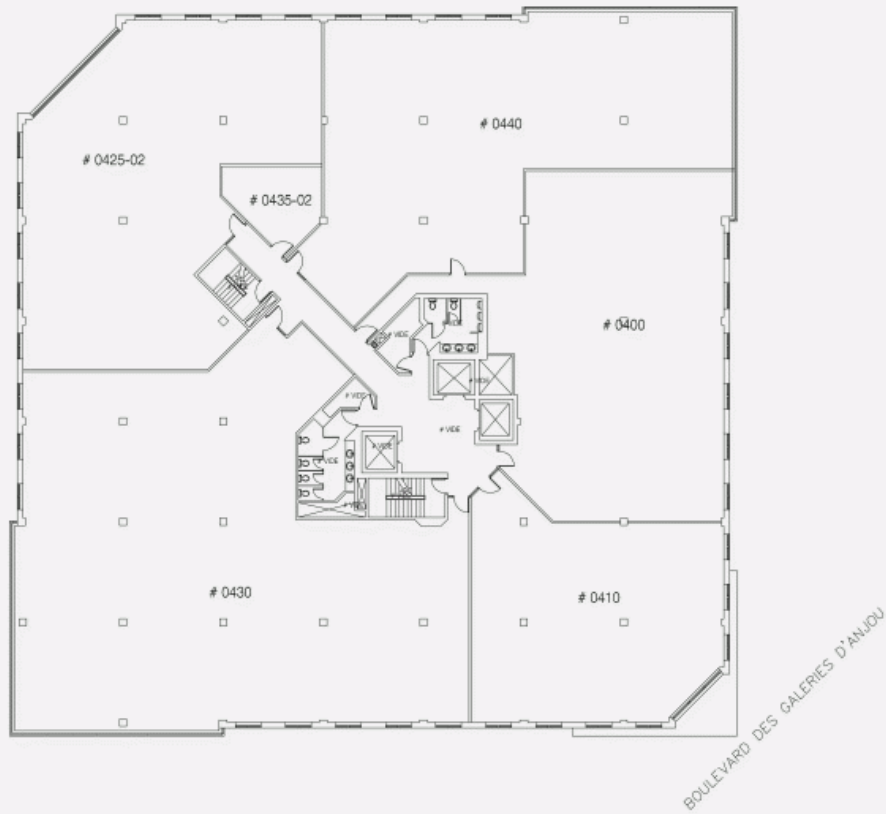


FLOOR 3 PLAN

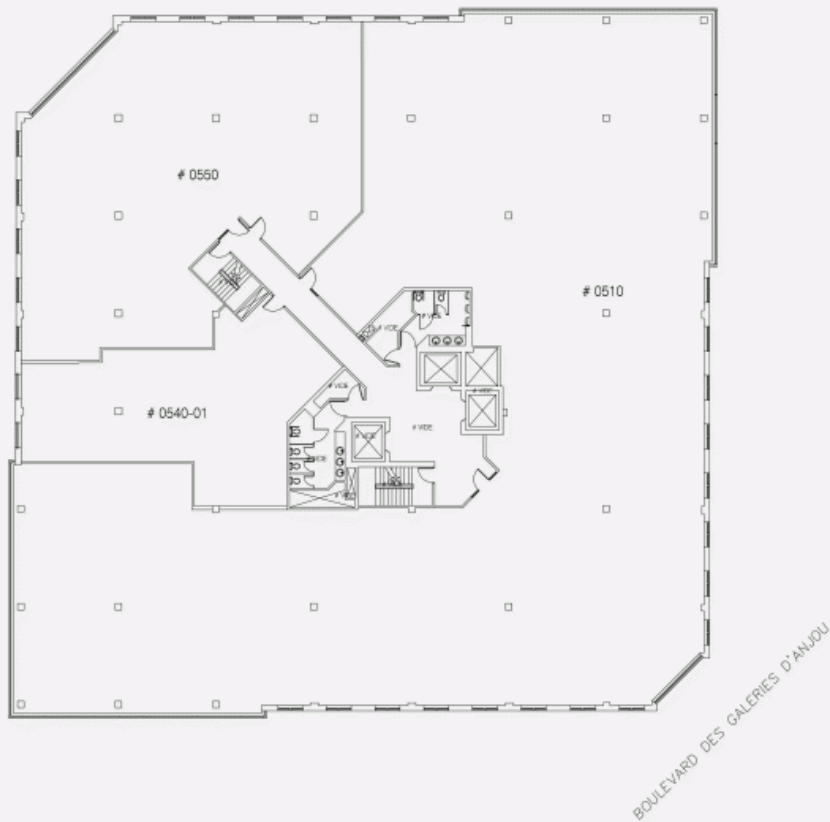


BOULEVARD DES GALERIES D'ANJOU

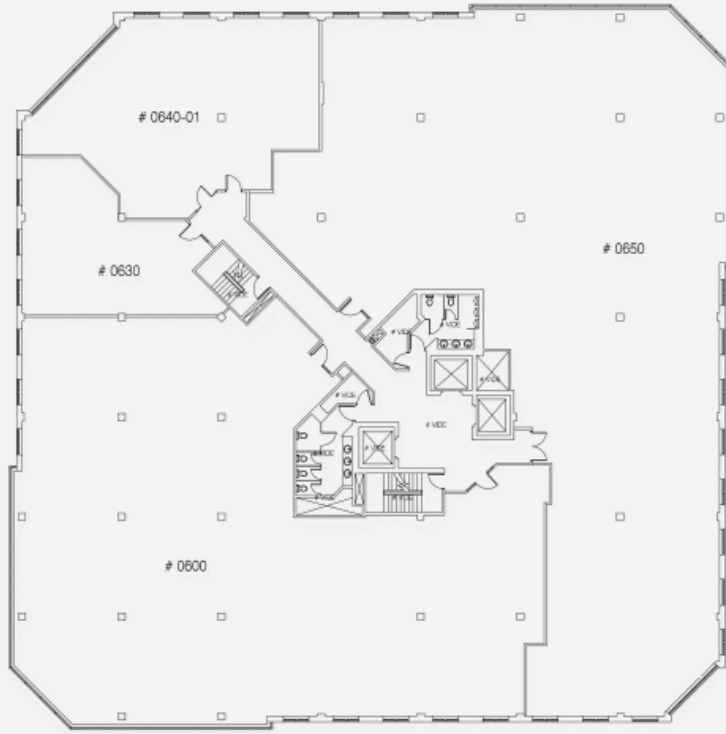
FLOOR 4 PLAN



FLOOR 5 PLAN



FLOOR 6 PLAN



BOULEVARD DES GALERIES D'ANJOU