

Our flagship property, Complexe Jules-Dallaire is a Class A mixed-use property which combines 161 residential units and hosts major financial institutions, major law firms and many services such as restaurants, a daycare, a spa, etc. The building is located at the entrance of the city with an easy access at the public transport.

Complexe Jules Dallaire have 5 indoor parking level. This prestigious property is LEED-Gold Certified.

Building characteristics

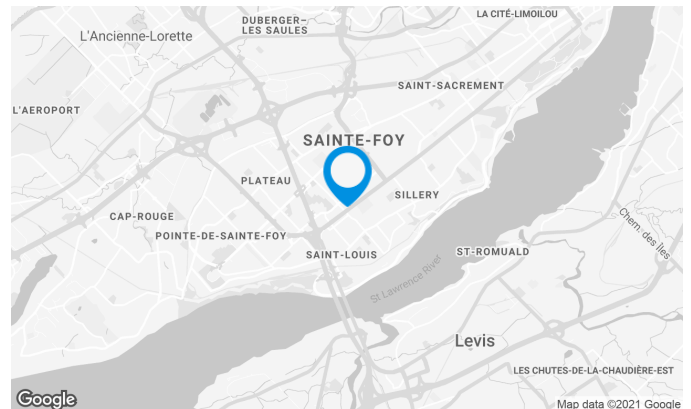
TOTAL LEASING AREA	548,050 ft ²
BUILDING AREA	845,550 ft ²
LAND AREA	129,877 ft ²
YEAR OF CONSTRUCTION	2010
NUMBER OF FLOORS	4
ELEVATORS	14
OPTICAL FIBER	Yes
SPRINKLERS	Yes
GENERATOR	Yes
BUILDING SERVICES	Cleansing service is available upon request.

BUILDING ACCESSIBILITY

INDOOR PARKING	1,360
PARC À VÉLOS DISPONIBLE	Yes
BUS	22,88, 93, 800, 801, 915

AWARDS

LEED - Gold

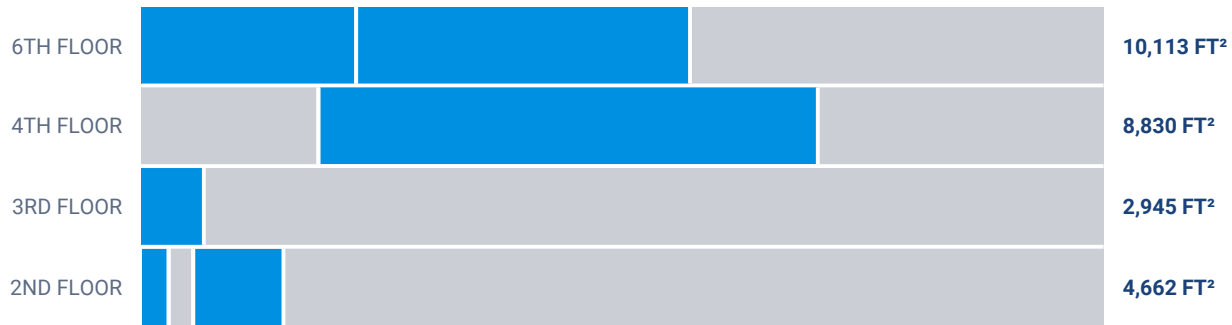


Location Cominar



T 418 681-6300 #2411
E LOCATIONQUEBEC@COMINAR.COM

Available leasing areas from 1,073 ft² to 8,830 ft²



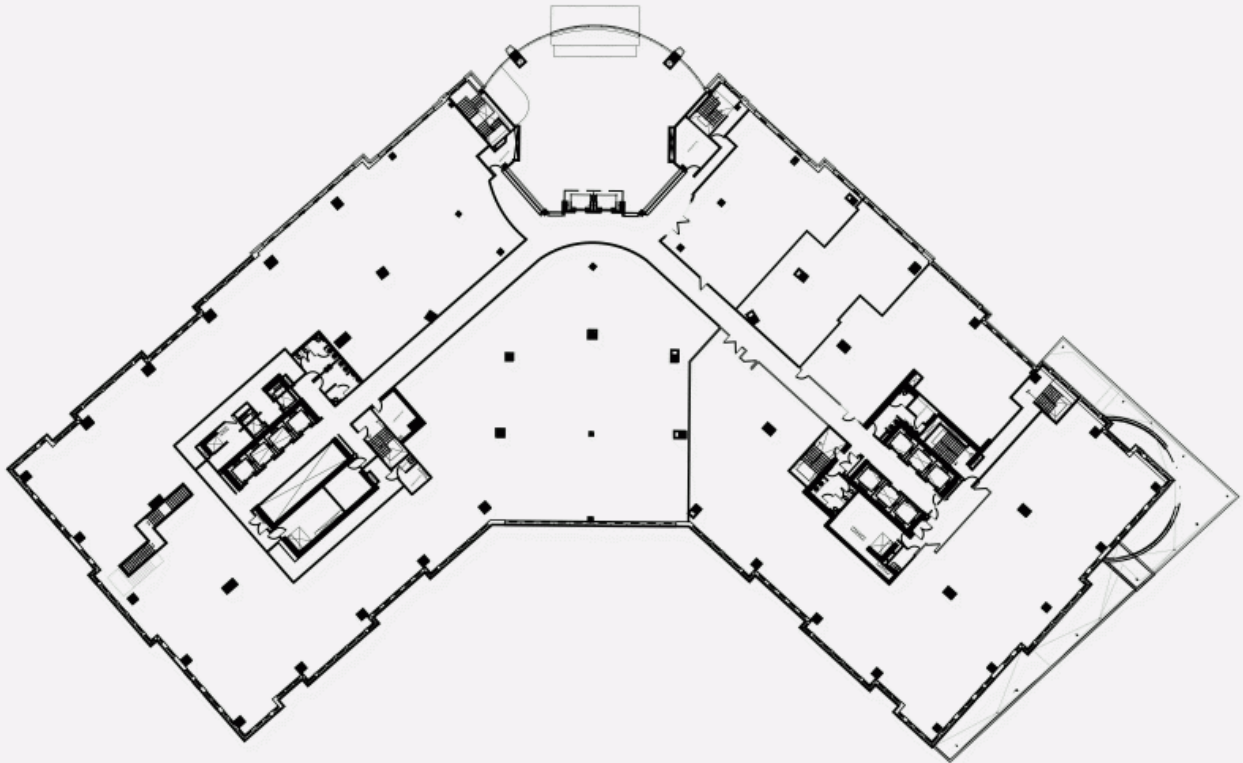
List of available offices

SUITE	FLOOR	AVAILABILITY	AREA
Suite T1-290	2	Immediate	3,589 ft ²
Suite #T1-030	2		978 ft ²
Suite #T1-245	2	Immediate	1,073 ft ²
Suite #T1-345	3	Immediate	2,945 ft ²
Suite #T3-460	4	November 2021	8,830 ft ²
Suite #T3-480	4		3,125 ft ²
Suite #T1-640	6	September 2023	6,157 ft ²
Suite #T3-670	6	Immediate	3,956 ft ²



BUILDING PICTURE

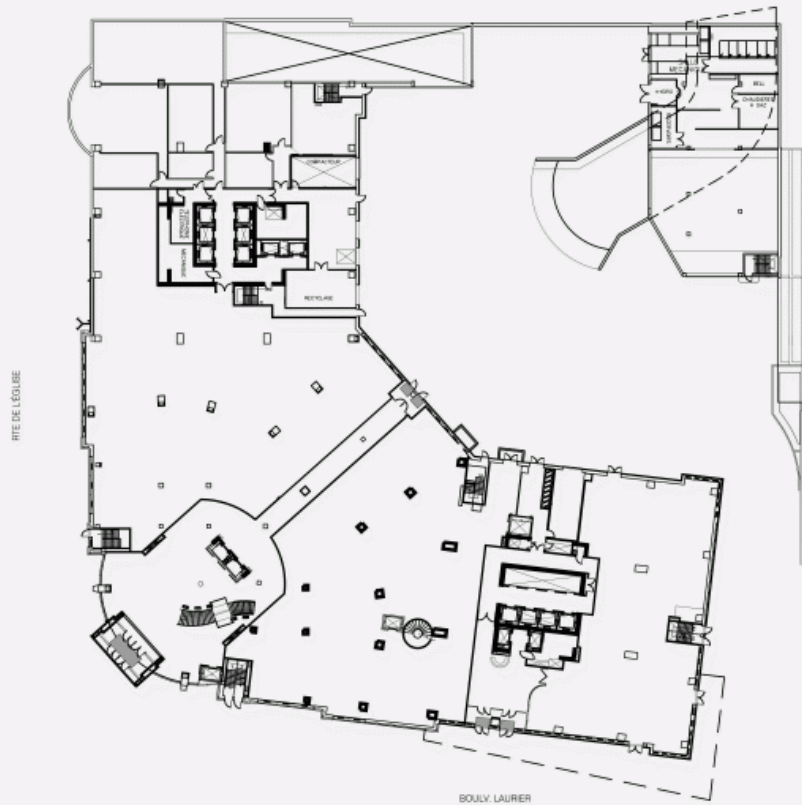
FLOOR PLAN



FLOOR PLAN



FLOOR PLAN



FLOOR PLAN

