

565 to 585 Charest Boulevard East, Quebec, QC, G1K 9H4

Suite #120



Located at the intersection of boulevard Charest East and rue de la Chapelle, in downtown Quebec City. Located inside the perimeter of the Centre national des nouvelles technologies de Québec (CNNTQ).

Near the Nouvo St-Roch area, the Gare du Palais and of the old Port market. Many services nearby, restaurants, banks, hotels, shops, gym, etc.

Building characteristics

TOTAL LEASING AREA	103,990 ft ²
LAND AREA	23,048 ft ²
NUMBER OF FLOORS	10
ASCENCEURS	3
% COMMON AREA	12
OPTICAL FIBER	Yes
SPRINKLERS	Yes
SECURITY	2 loading docks available in the landing stage of the building. Fire alarm panel, heating sensor, smoke detector

BUILDING ACCESSIBILITY

INDOOR PARKING	249
ROAD ACCESS	Charest boulevard
BUS	1/18/294/295/800/950



Location Cominar



T 418 681-6300 #2411
E LOCATIONQUEBEC@COMINAR.COM

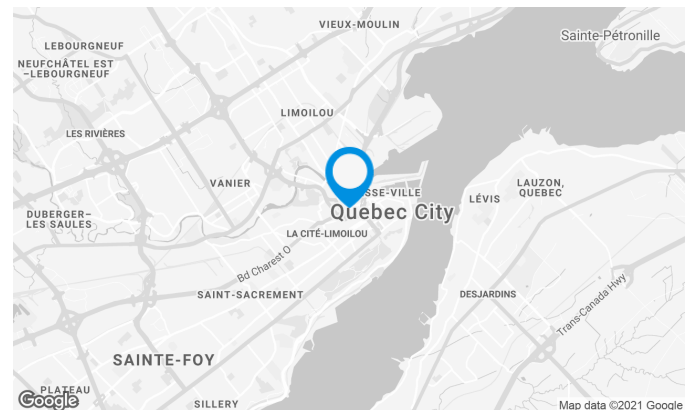
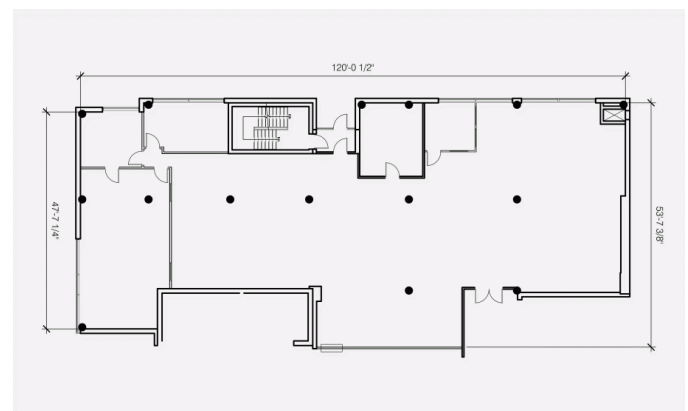
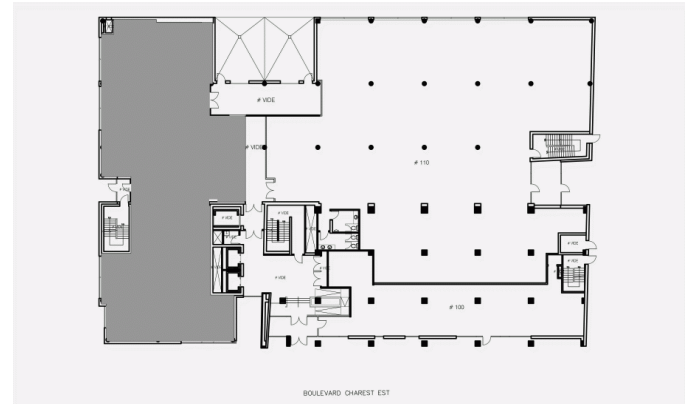
Space characteristics

AVAILABLE LEASING AREA 5,748 ft²

AVAILABILITY Immediate

NUMBER OF FLOORS 1

FLOOR AREA 16,948 ft²



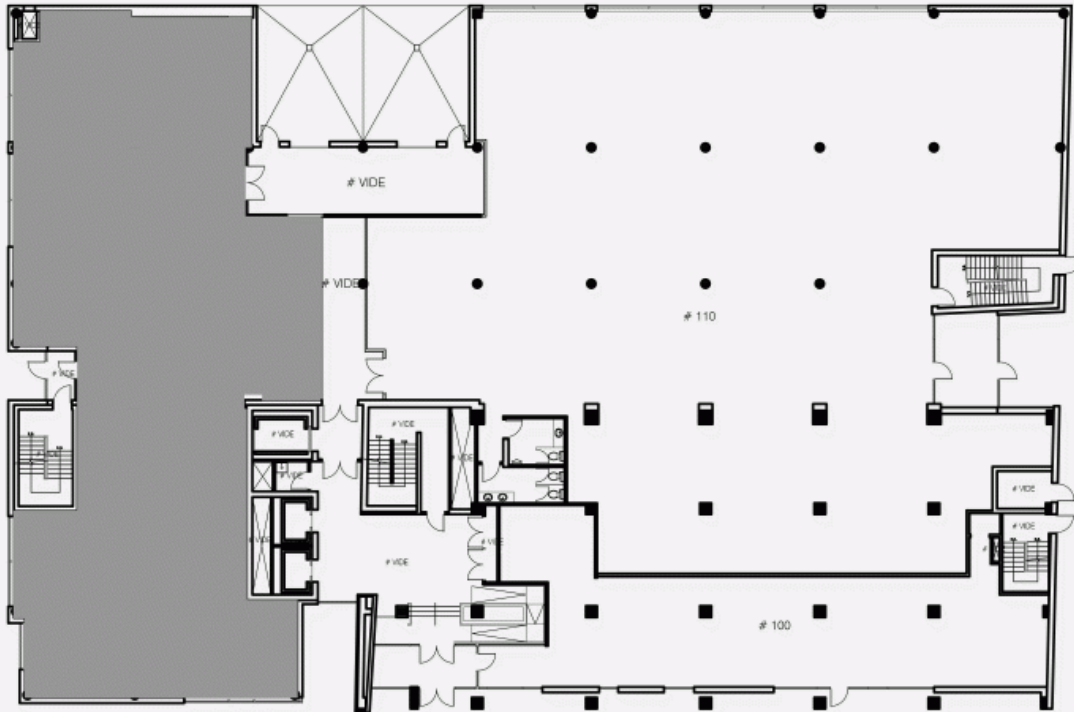
Location Cominar



T 418 681-6300 #2411

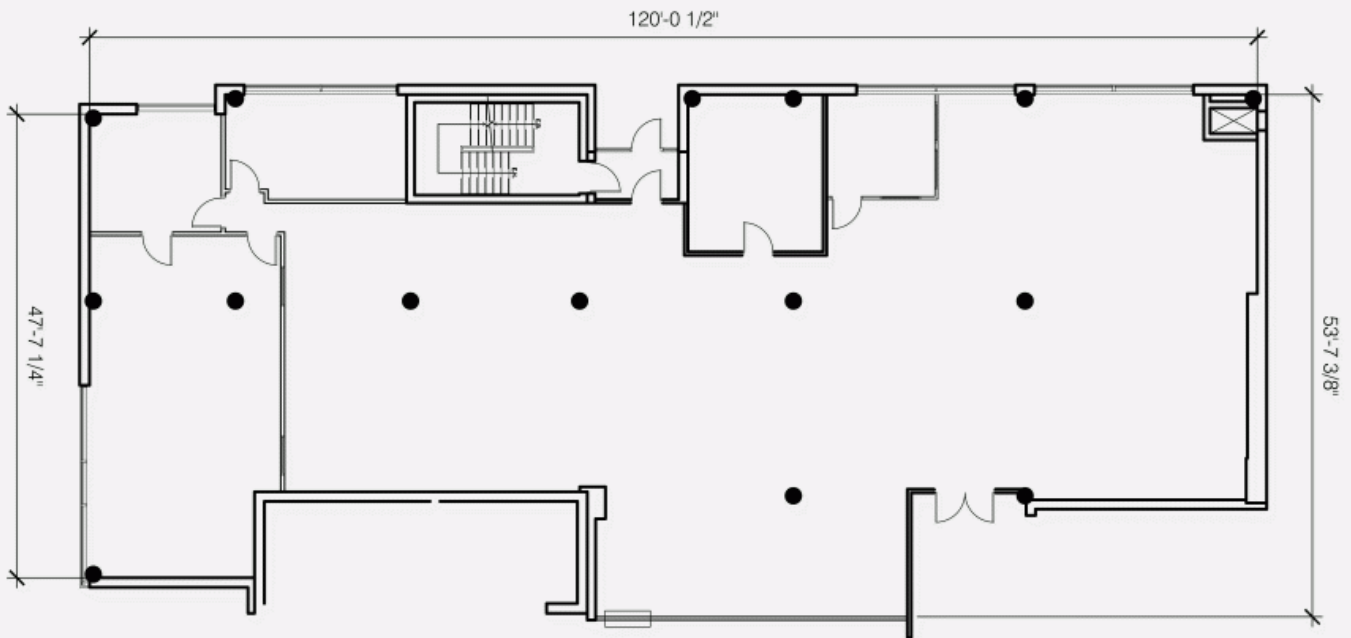
E LOCATIONQUEBEC@COMINAR.COM

GROUND FLOOR PLAN



BOULEVARD CHAREST EST

GROUND FLOOR PLAN



565 to 585 Charest Boulevard East, Quebec, QC, G1K 9H4
Suite #120

