

# 1111 Dr.-Frederik-Philips Boulevard, Montreal, QC, H4M 2X6

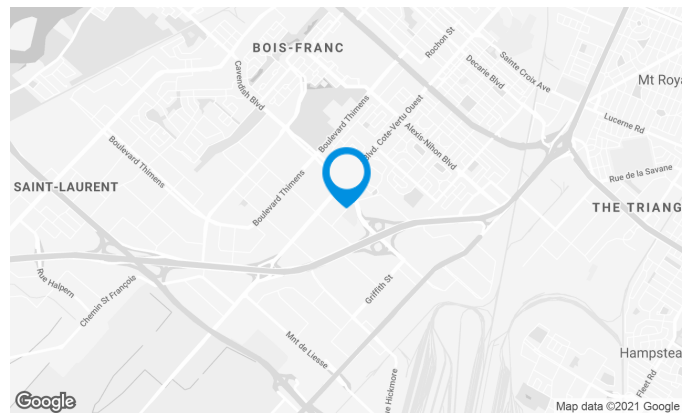
Excellent visibility from the Metropolitan Highway & easy access to Côte-de-Liesse Highway (520). Located close to Place Côte Vertu and to many restaurants and stores.

## Building characteristics

TOTAL LEASING AREA	102,000 ft <sup>2</sup>
NUMBER OF FLOORS	6
ELEVATORS	3
OPTICAL FIBER	Yes
SPRINKLERS	Yes
GENERATOR	Yes
HVAC HOURS	Monday to Friday: 7 AM to 6 PM
SECURITY	Access cards, cameras

## BUILDING ACCESSIBILITY

INDOOR PARKING	24
OUTDOOR PARKING	140
ROAD ACCESS	Trans-Canada Highway (Highway 40), Thimens Boulevard, Cavendish Boulevard
BUS	174, 177, 196, 213, 216, 225, 371, 409
METRO STATION	Côte-Vertu (2.6 km)

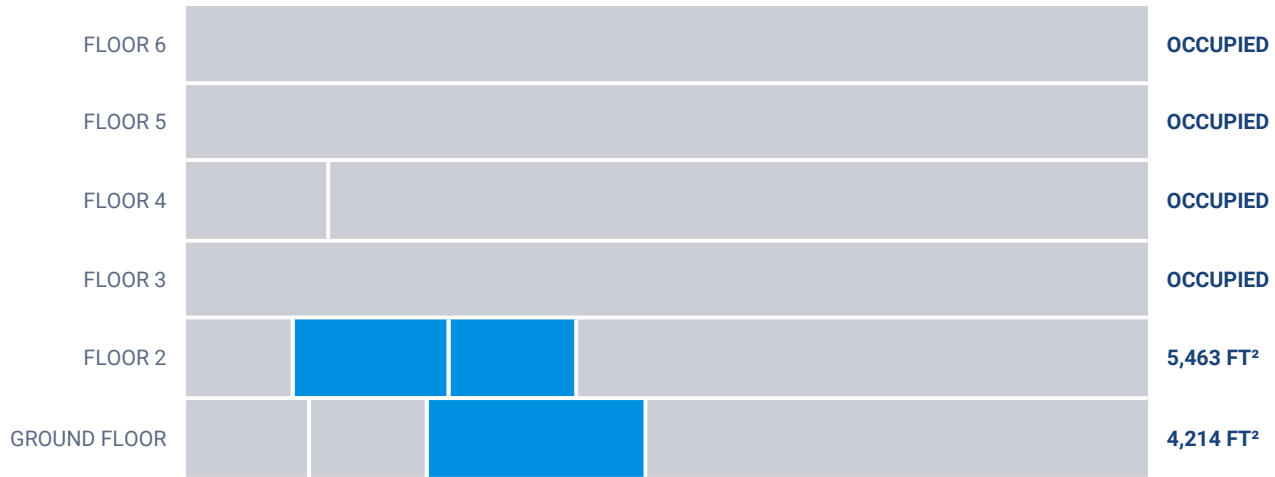


**Xavier Martin**

LEASING DIRECTOR  
LEASING - OFFICES, MONTREAL AREA

**T** 514 737-3344 #3454  
**C** 514 346-3041  
**E** XAVIER.MARTIN@COMINAR.COM

**Available leasing areas from 2,459 ft<sup>2</sup> to 4,214 ft<sup>2</sup>**



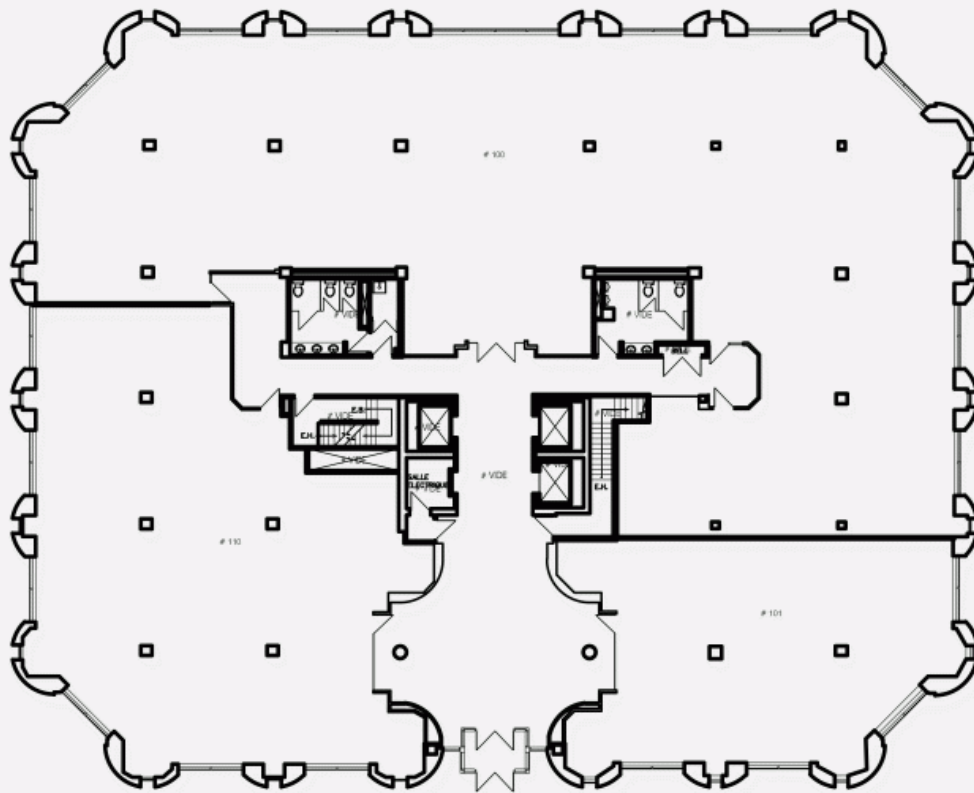
**List of available offices**

SUITE	FLOOR	AVAILABILITY	AREA
Suite #100B	RDC		2,376 ft <sup>2</sup>
Suite #101	RDC		2,267 ft <sup>2</sup>
Suite #110	RDC	Immediate	4,214 ft <sup>2</sup>
Suite #210	2	Immediate	2,459 ft <sup>2</sup>
Suite #220	2	Immediate	3,004 ft <sup>2</sup>
Suite #202	2		2,059 ft <sup>2</sup>
Suite #400	4		2,744 ft <sup>2</sup>

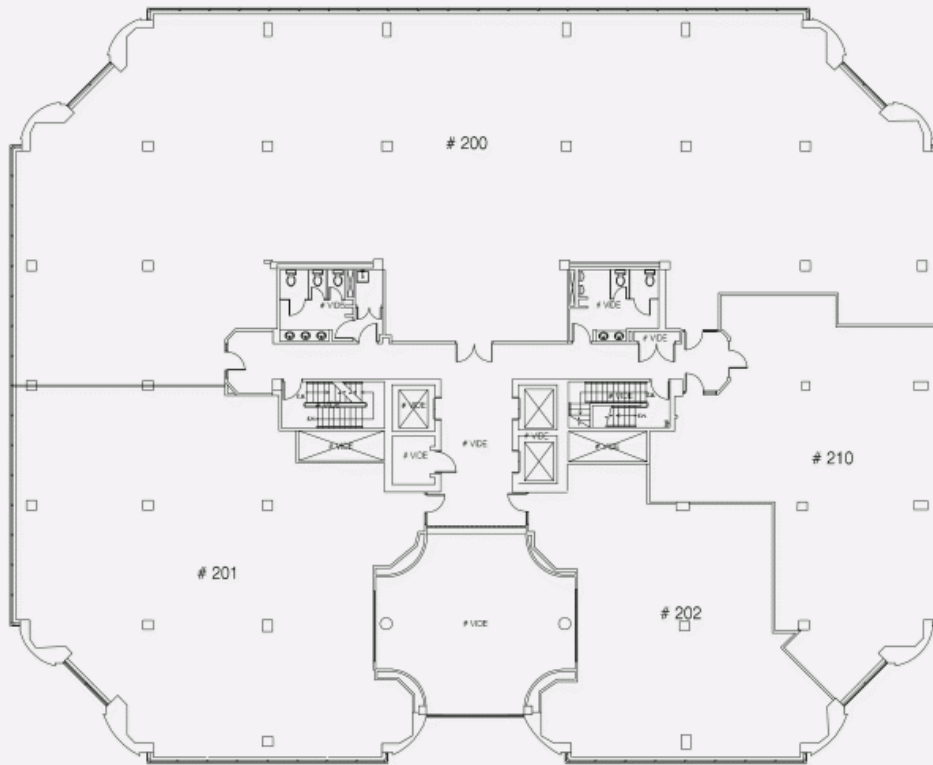
**1111 Dr.-Frederik-Philips Boulevard, Montreal, QC, H4M  
2X6**



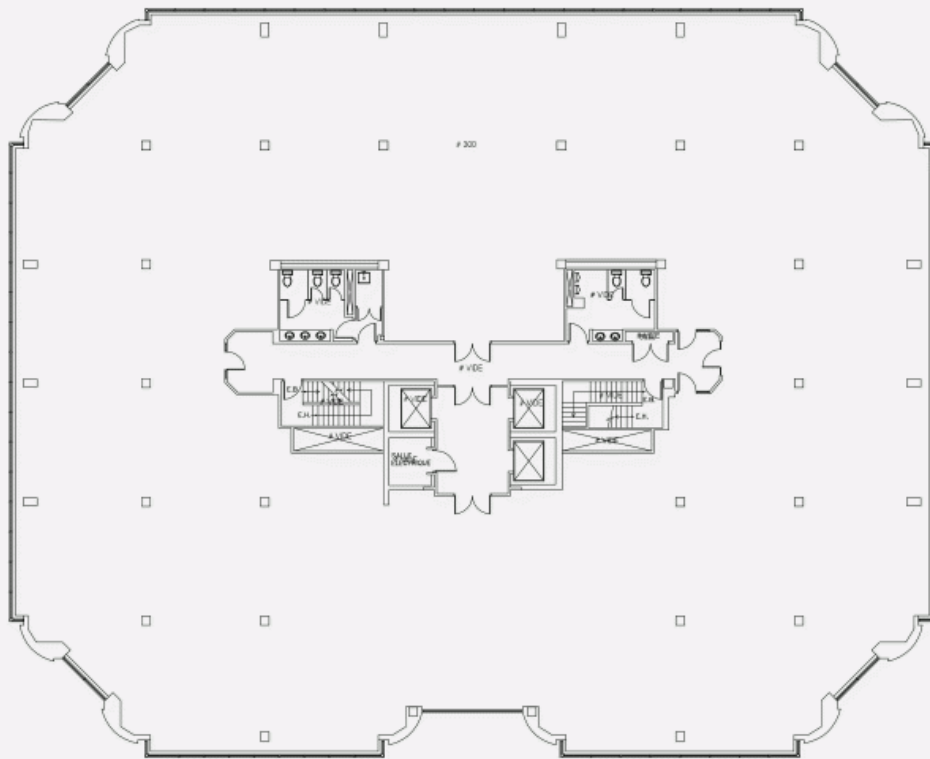
GROUND FLOOR PLAN



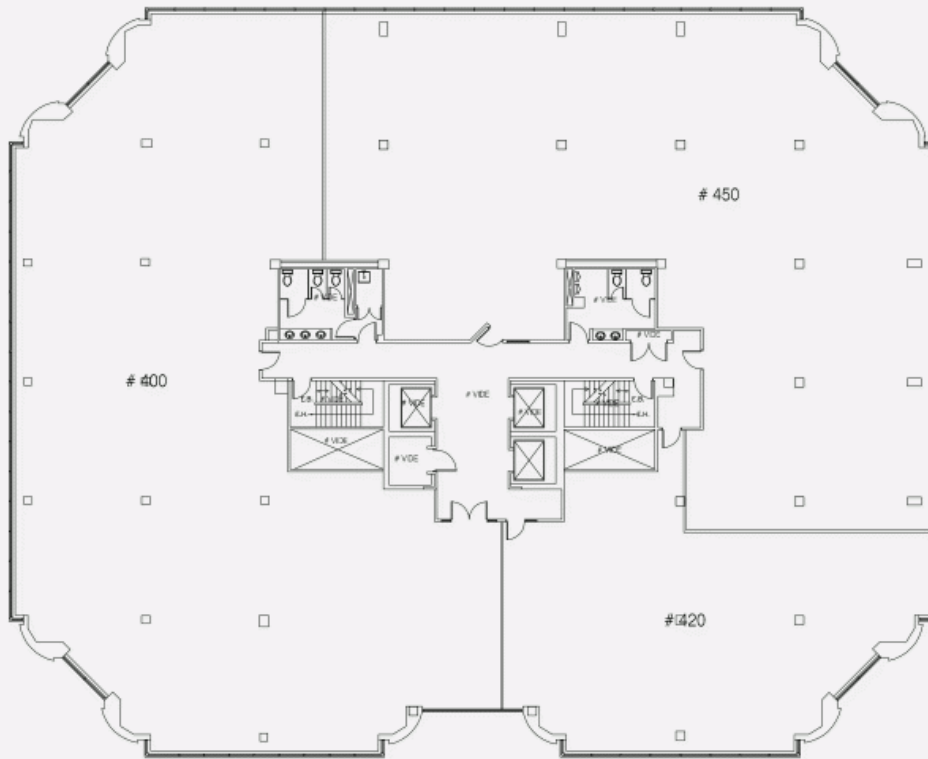
2ND FLOOR PLAN



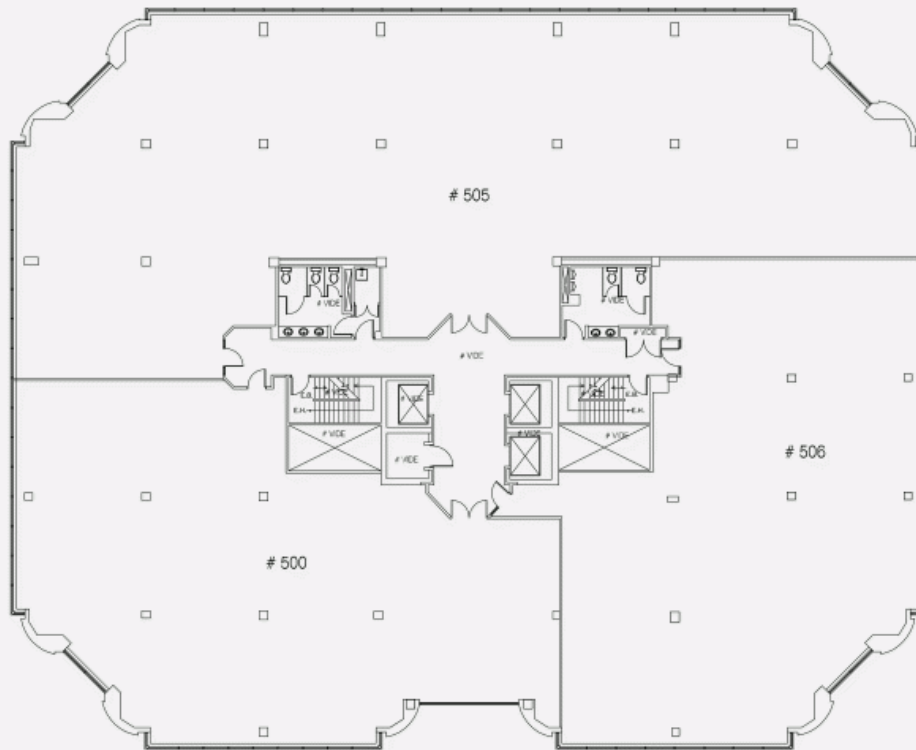
3RD FLOOR PLAN



4TH FLOOR PLAN



5TH FLOOR PLAN





6TH FLOOR PLAN

