

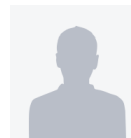
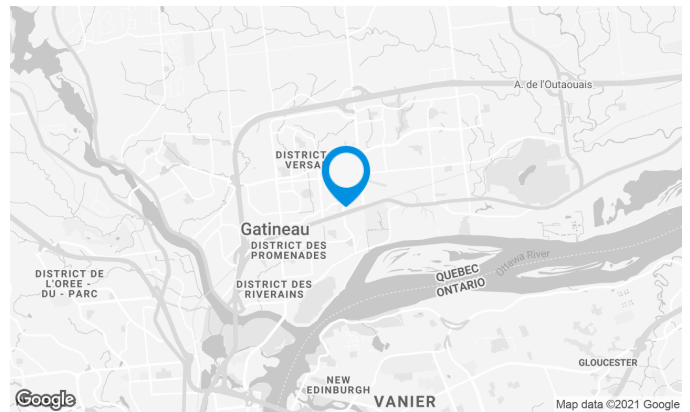
Two-storey brick building located in downtown Gatineau, this building is only minutes away from Highway 50 and the interprovincial bridges. The building is less than one kilometer from Les Promenades de Gatineau Shopping Center, Sports Center, House of Culture, Cegep, Restaurant and Shopping Center.

Building characteristics

TOTAL LEASING AREA	45,000 ft ²
YEAR OF RENOVATION	2007
YEAR OF CONSTRUCTION	2003
NUMBER OF FLOORS	2
HVAC HOURS	From 6 am to 6 pm

BUILDING ACCESSIBILITY

OUTDOOR PARKING	100
-----------------	-----



John Esposito

LEASING MANAGER
LEASING - OFFICES, ONTARIO AREA

T 613 234-4416 #8428

C 613 408-5430

E JOHN.ESPOSITO@COMINAR.COM

Superficie locative disponible de 14,640 ft²

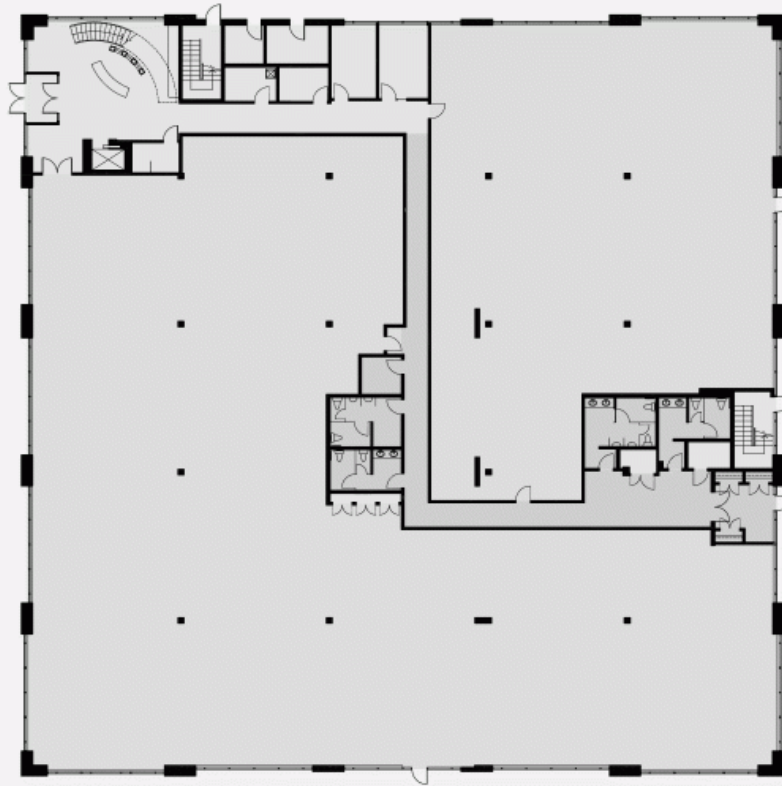


List of available offices

SUITE	FLOOR	AVAILABILITY	AREA
Suite #100	RDC	Immediate	14,640 ft ²
Suite 201	2		4,989 ft ²
Suite #202	2		2,362 ft ²



PLAN - 1



FLOOR 2 PLAN

