

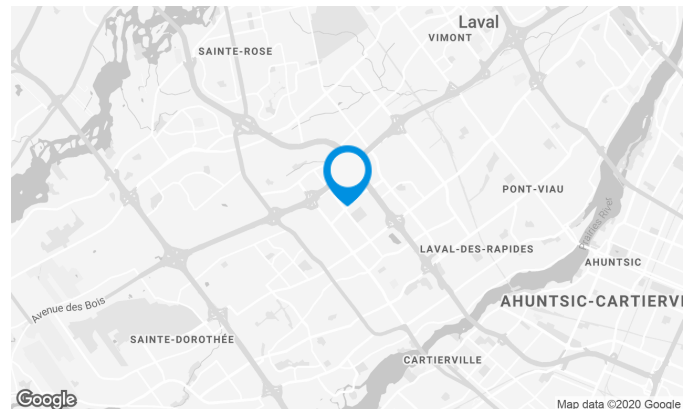
Prestigious office building located next to the Carrefour Laval and major highways. The building is equipped with fibre optic.

Building characteristics

TOTAL LEASING AREA	76,255 ft ²
NUMBER OF FLOORS	7
ELEVATORS	2
OPTICAL FIBER	Yes
GENERATOR	Yes
HVAC HOURS	Monday to Friday: 7:30 AM tot 6 PM
SECURITY	Access cards
BUILDING SERVICES	Bank

BUILDING ACCESSIBILITY

INDOOR PARKING	118
OUTDOOR PARKING	280
PARC À VÉLOS DISPONIBLE	Yes
ROAD ACCESS	Des Laurentides Highway (15), Saint-Martin Boulevard West, Jean-Noel-Lavoie Highway (440)
BUS	42, 56, 60, 61, 66, 70, 360, 902

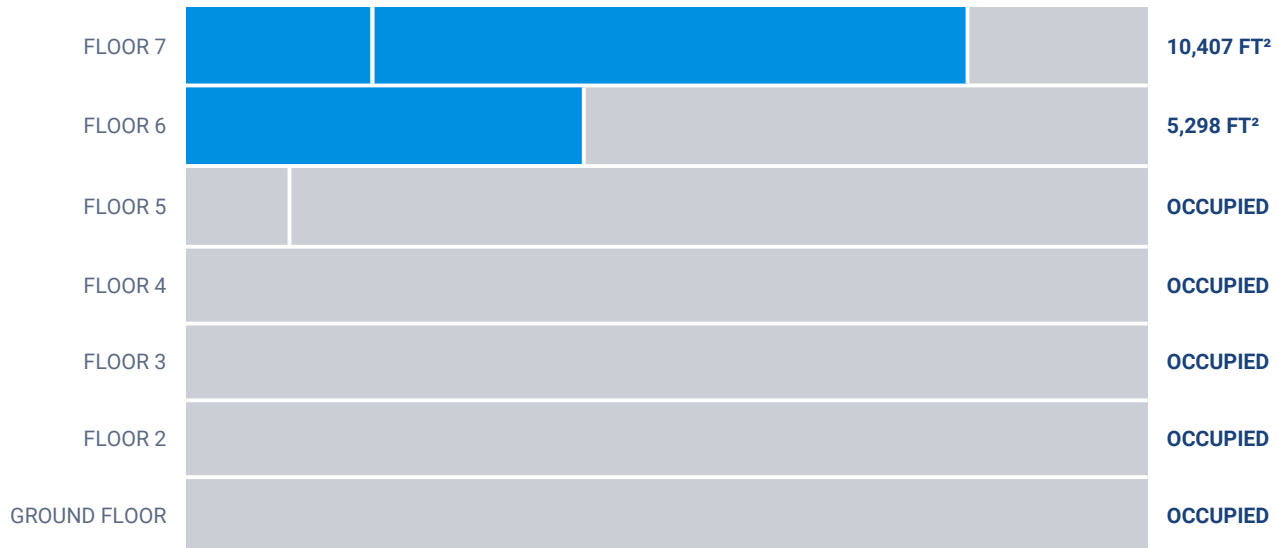


Julie Godbout

LEASING MANAGER
LEASING - OFFICES, MONTREAL AREA

T 514 737-3344 #3485
C 514 238-7079
E JULIE.GODBOUT@COMINAR.COM

Available leasing areas from 2,484 ft² to 10,407 ft²

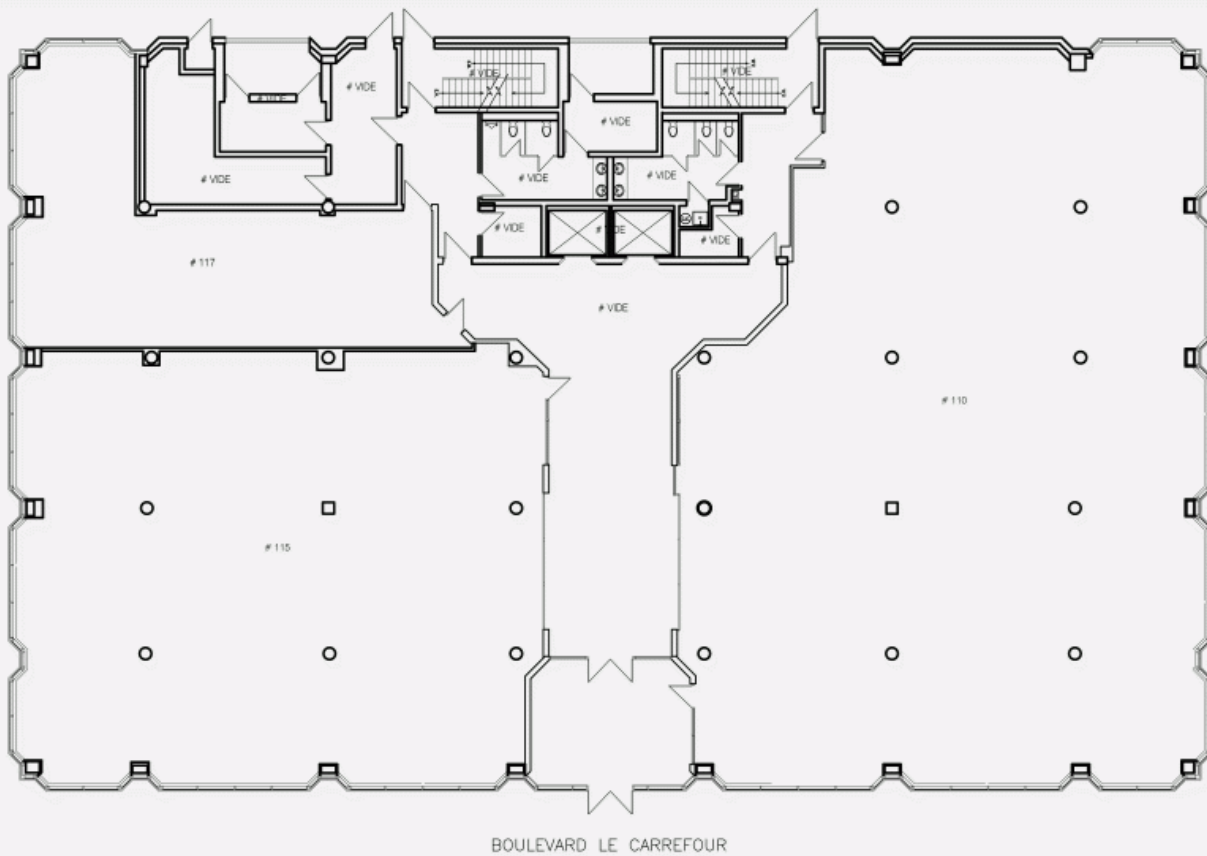


List of available offices

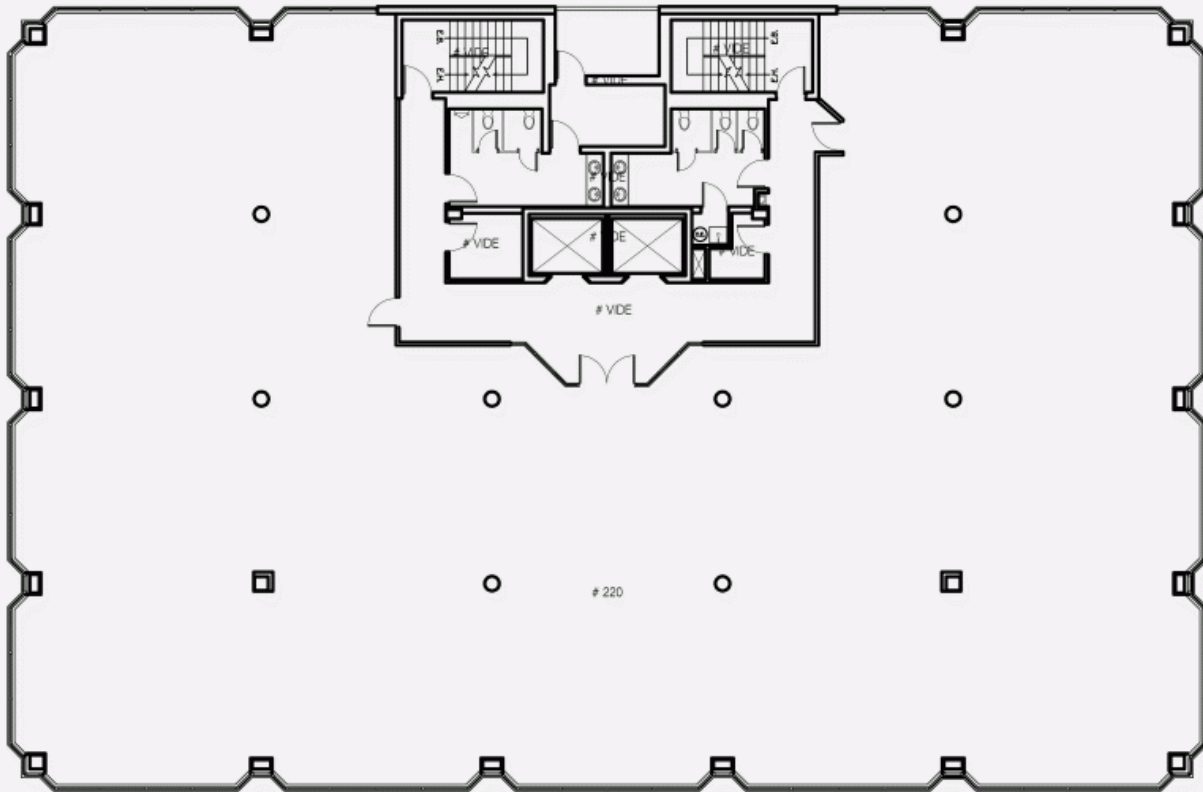
SUITE	FLOOR	AVAILABILITY	AREA
Suite #560	5		1,380 ft ²
Suite #610	6	Immediate	5,298 ft ²
Suite #770	7	Immediate	7,923 ft ²
Suite #770-770A	7	Immediate	10,407 ft ²
Suite #770A	7	Immediate	2,484 ft ²



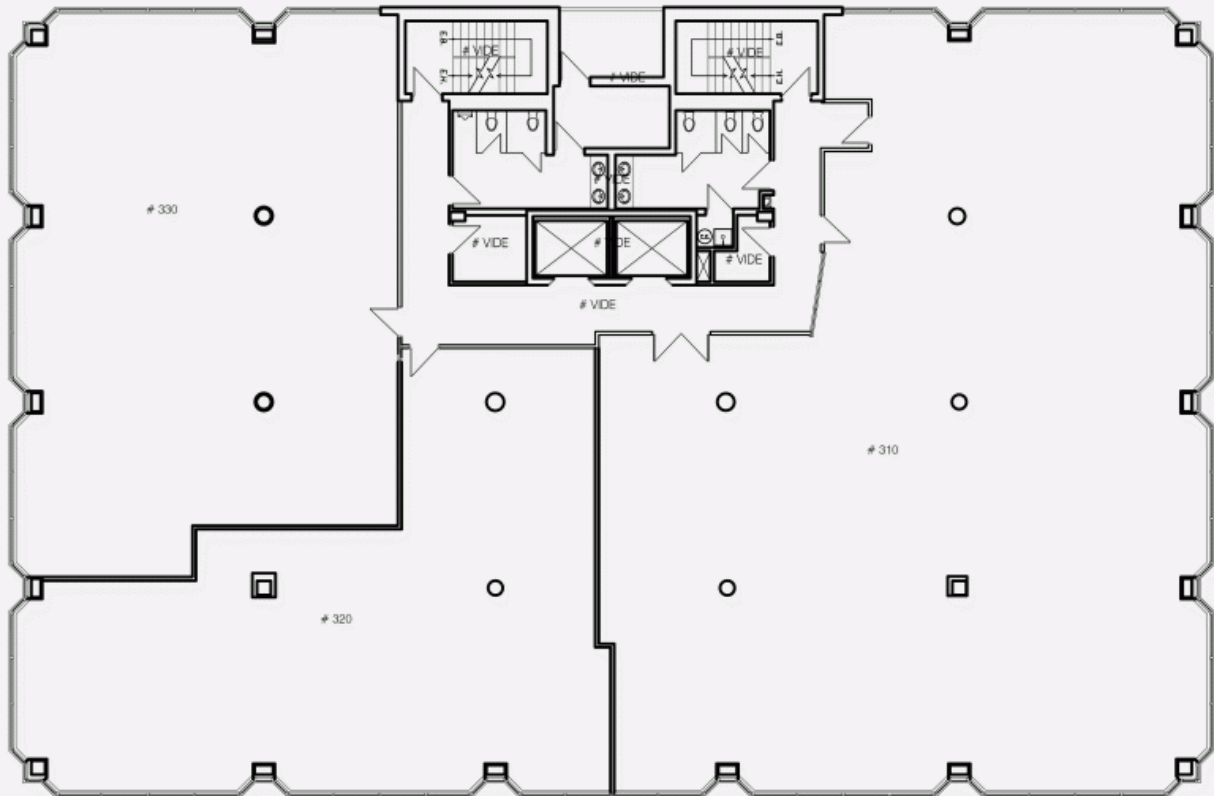
GROUND FLOOR PLAN



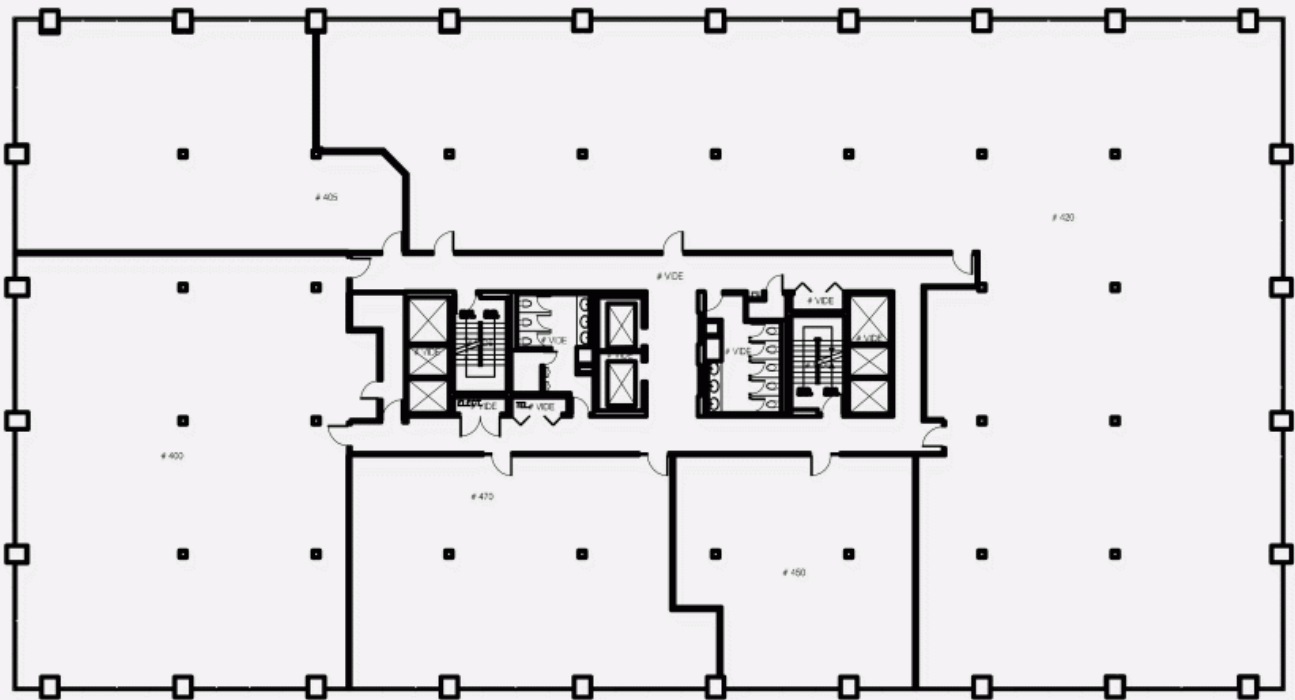
2ND FLOOR PLAN



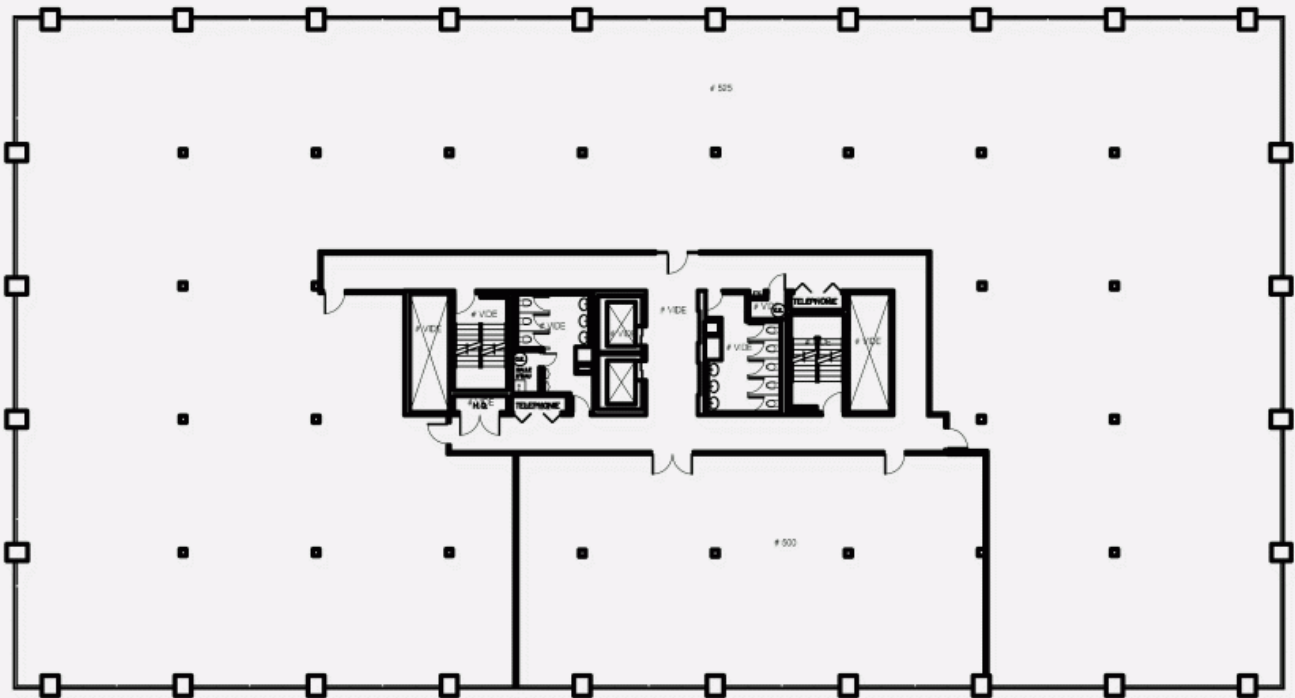
3RD FLOOR PLAN



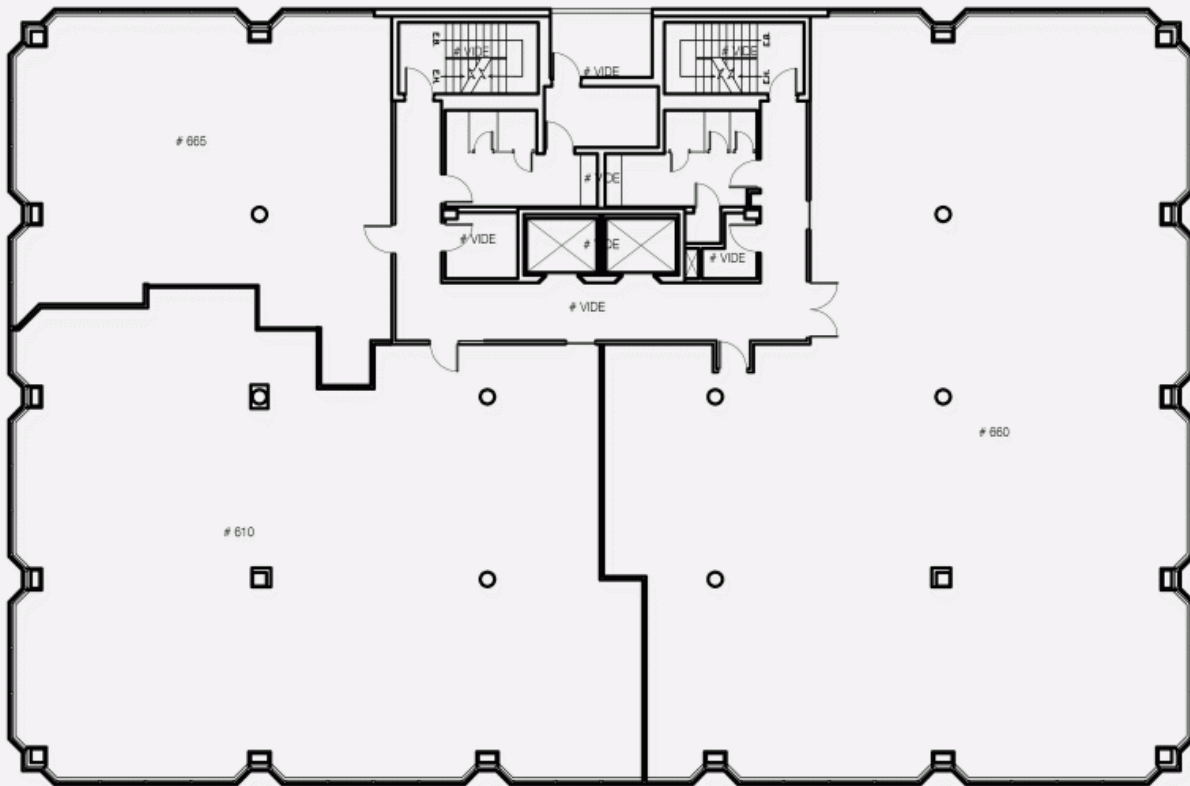
4TH FLOOR PLAN



5TH FLOOR PLAN



6TH FLOOR PLAN



7TH FLOOR PLAN

