

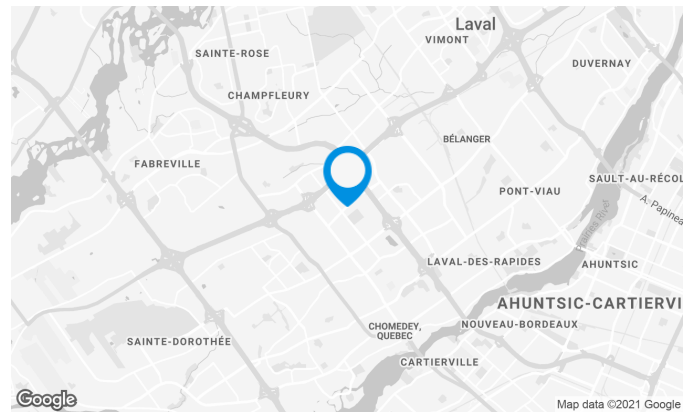
Prestigious office building located next to the Carrefour Laval and major highways. The building is equipped with fibre optic.

Building characteristics

TOTAL LEASING AREA	72,003 ft ²
NUMBER OF FLOORS	7
ELEVATORS	2
OPTICAL FIBER	Yes
GENERATOR	Yes
HVAC HOURS	Monday to Friday: 7:30 AM to 6 PM
SECURITY	Access cards

BUILDING ACCESSIBILITY

OUTDOOR PARKING	252
PARC À VÉLOS DISPONIBLE	Yes
ROAD ACCESS	Des Laurentides Highway (15), Saint-Martin Boulevard West, Jean-Noel-Lavoie Highway (440)
BUS	42, 56, 60, 61, 66, 70, 360, 902

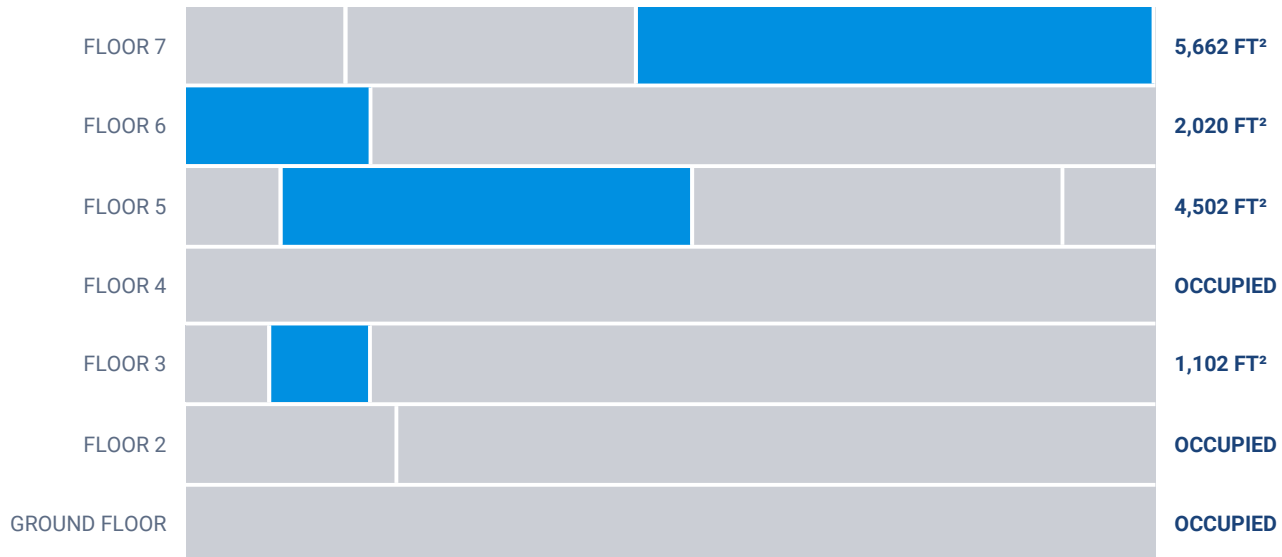


Julie Godbout

LEASING DIRECTOR
LEASING - OFFICES, MONTREAL AREA

T 514 737-3344 #3485
C 514 238-7079
E JULIE.GODBOUT@COMINAR.COM

Available leasing areas from 1,102 ft² to 5,662 ft²



List of available offices

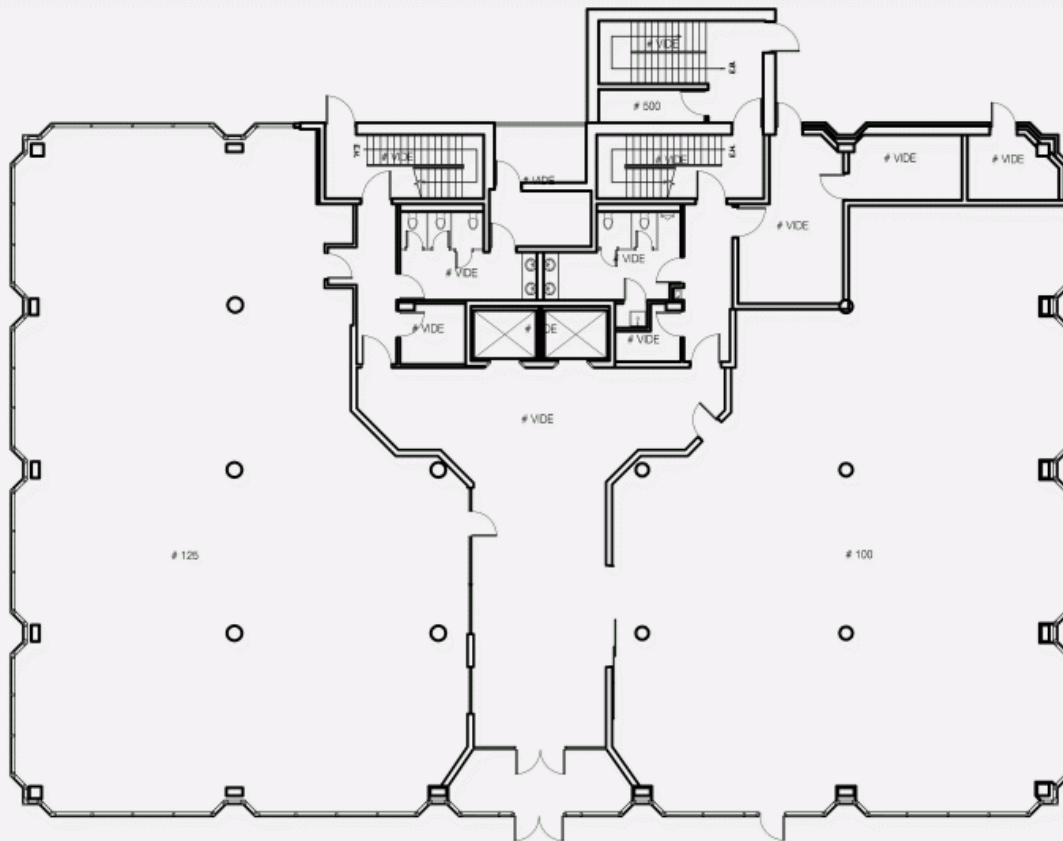
SUITE	FLOOR	AVAILABILITY	AREA
Suite #205	2		2,303 ft ²
Suite #304	3	Immediate	1,102 ft ²
Suite #301	3		912 ft ²
Suite #500	5		4,050 ft ²
Suite #502	5	Immediate	4,502 ft ²
Suite #510	5		1,036 ft ²
Suite #650	6	Immediate	2,020 ft ²
Suite #700	7	60 jours	5,662 ft ²
Suite #750	7		3,176 ft ²

List of available offices

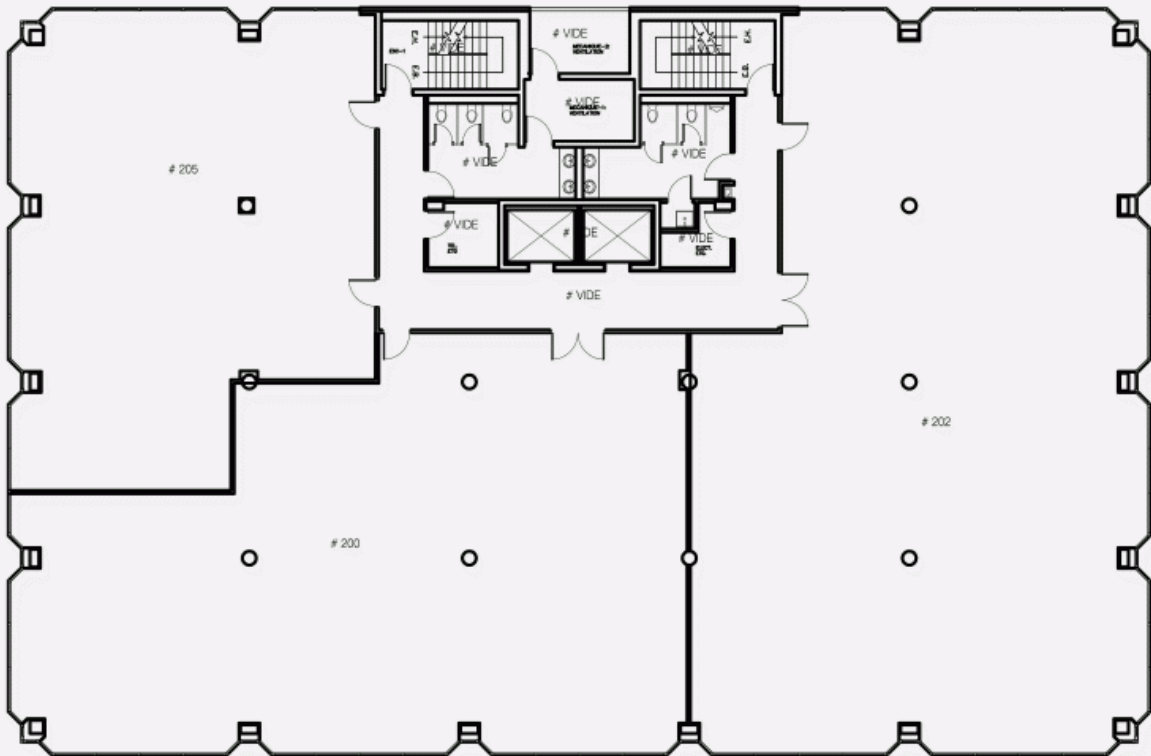
SUITE	FLOOR	AVAILABILITY	AREA
Suite #720	7		1,746 ft ²



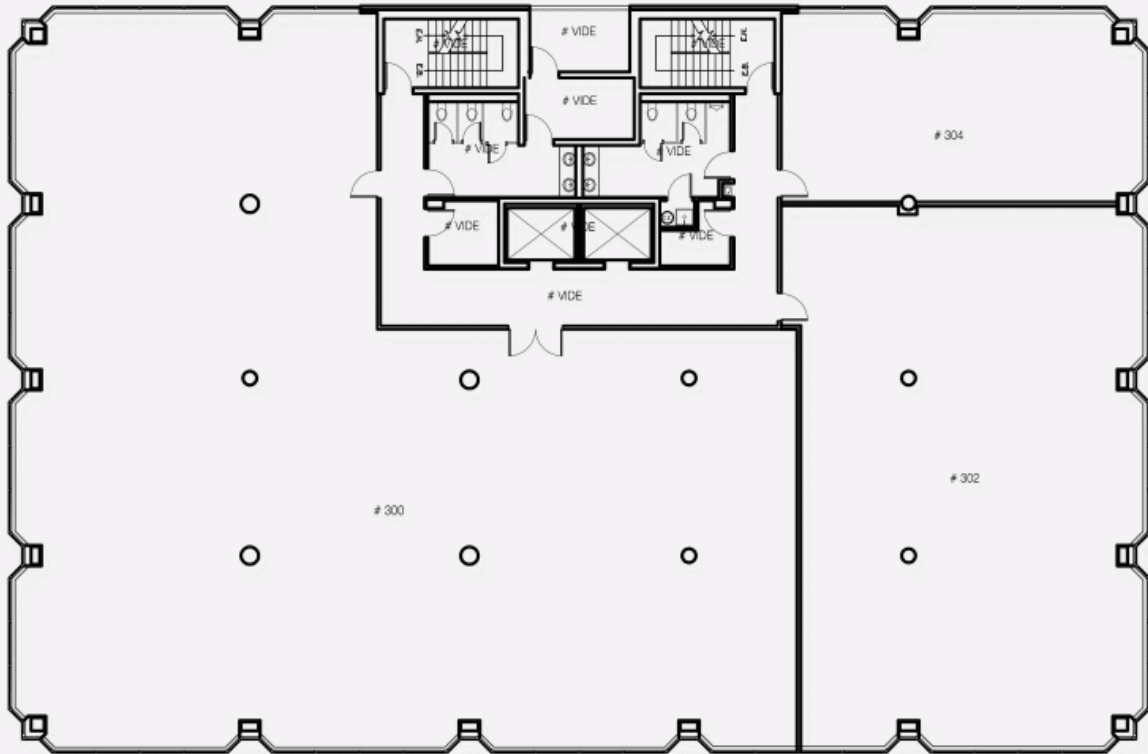
GROUND FLOOR PLAN



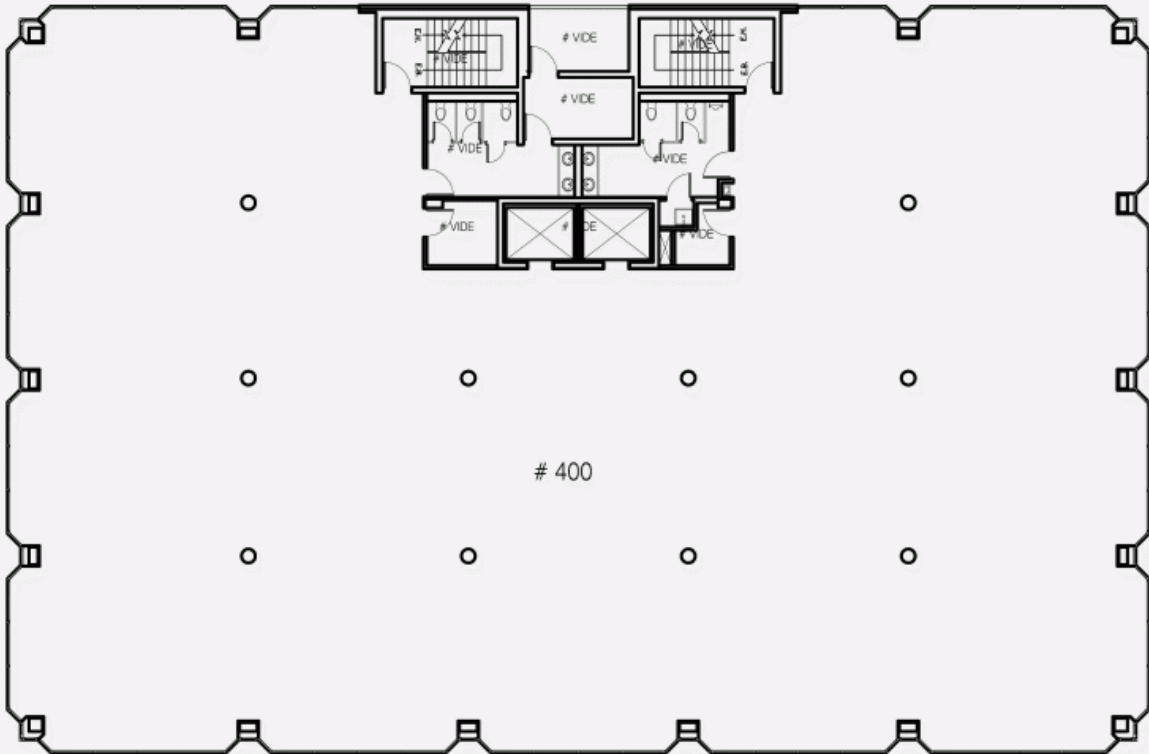
2ND FLOOR PLAN



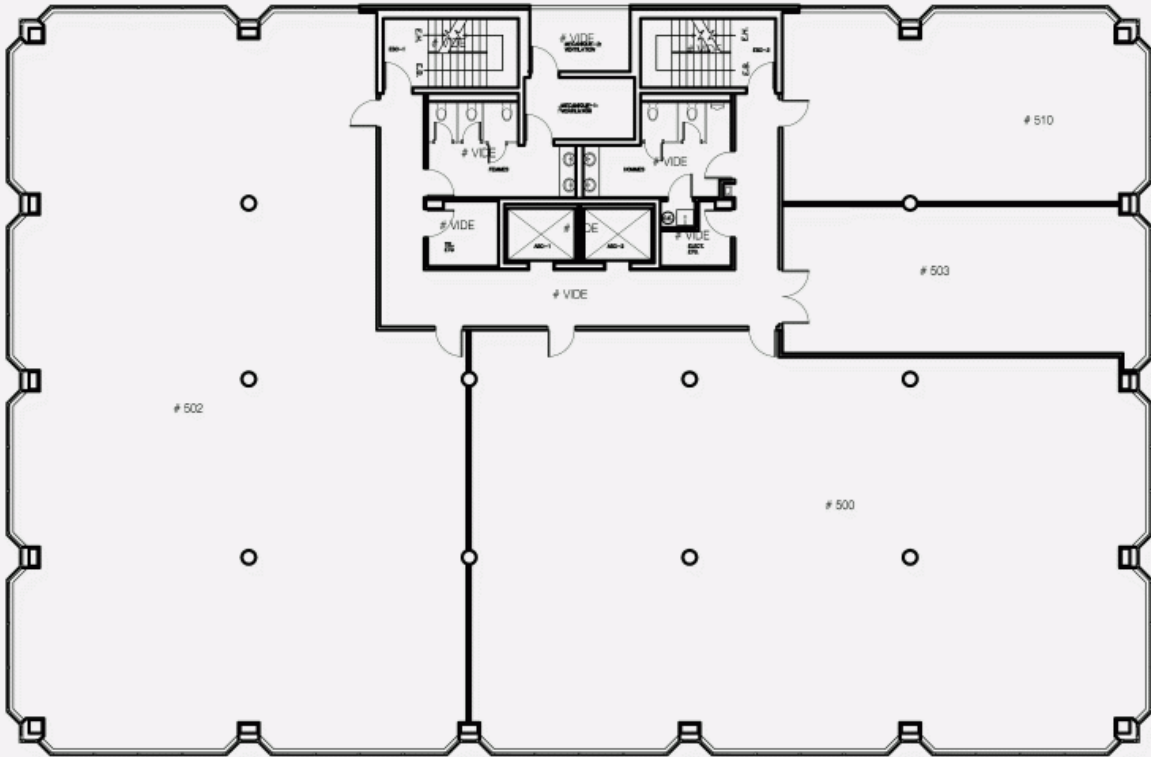
3RD FLOOR PLAN



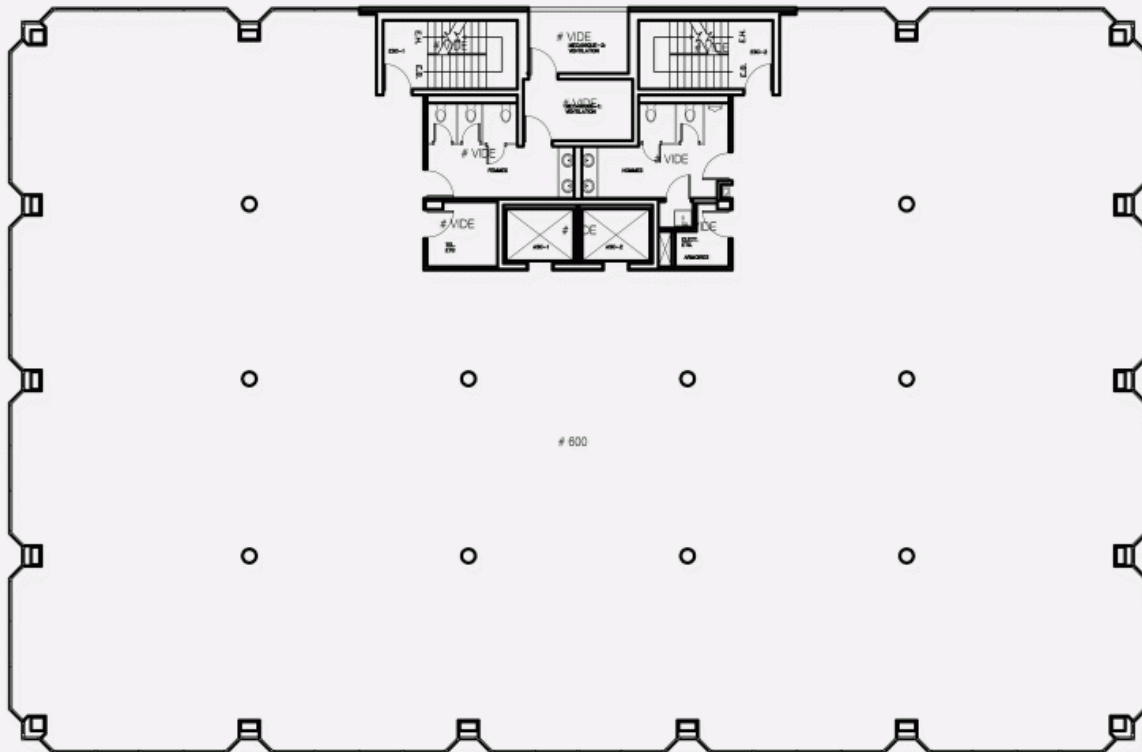
4TH FLOOR PLAN



5TH FLOOR PLAN



6TH FLOOR PLAN



7TH FLOOR PLAN

