

# 2700 Jean-Perrin Street, Quebec, QC, G2C 1S9

## Suite #300

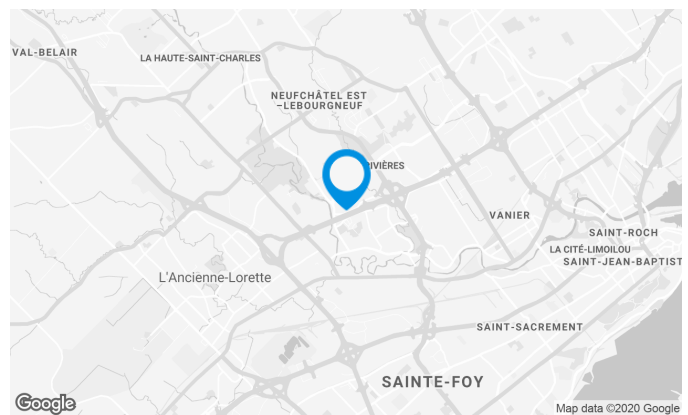
Located along the Félix-Leclerc Highway at the intersection of the Robert-Bourassa Highway (Métrobec). Neighbor of Lebourgneuf district.

### Building characteristics

TOTAL LEASING AREA	128,982 ft <sup>2</sup>
YEAR OF CONSTRUCTION	1987
NUMBER OF FLOORS	2
% COMMON AREA	5
OPTICAL FIBER	Yes
SPRINKLERS	Yes
SECURITY	Access cards

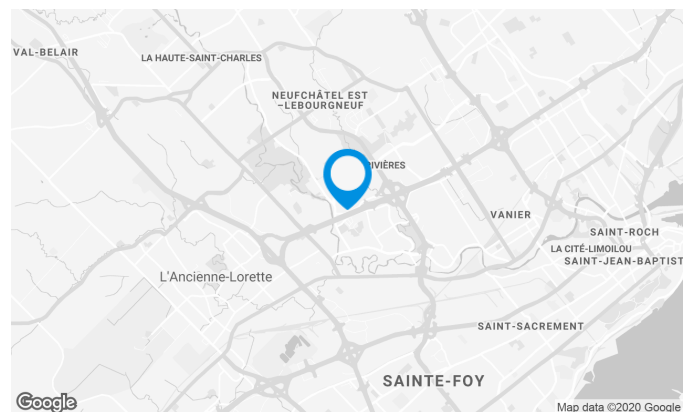
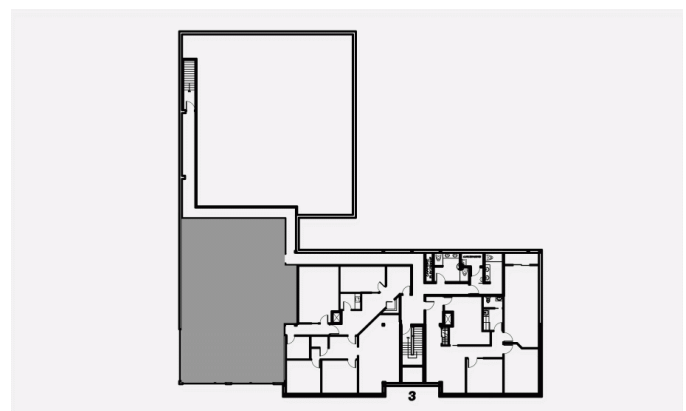
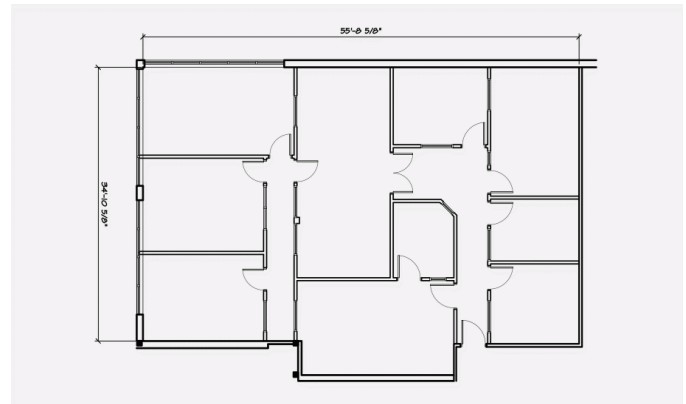
### BUILDING ACCESSIBILITY

OUTDOOR PARKING	355
ROAD ACCESS	Félix-Leclerc Highway / Robert-Bourassa Highway / Henri IV Highway

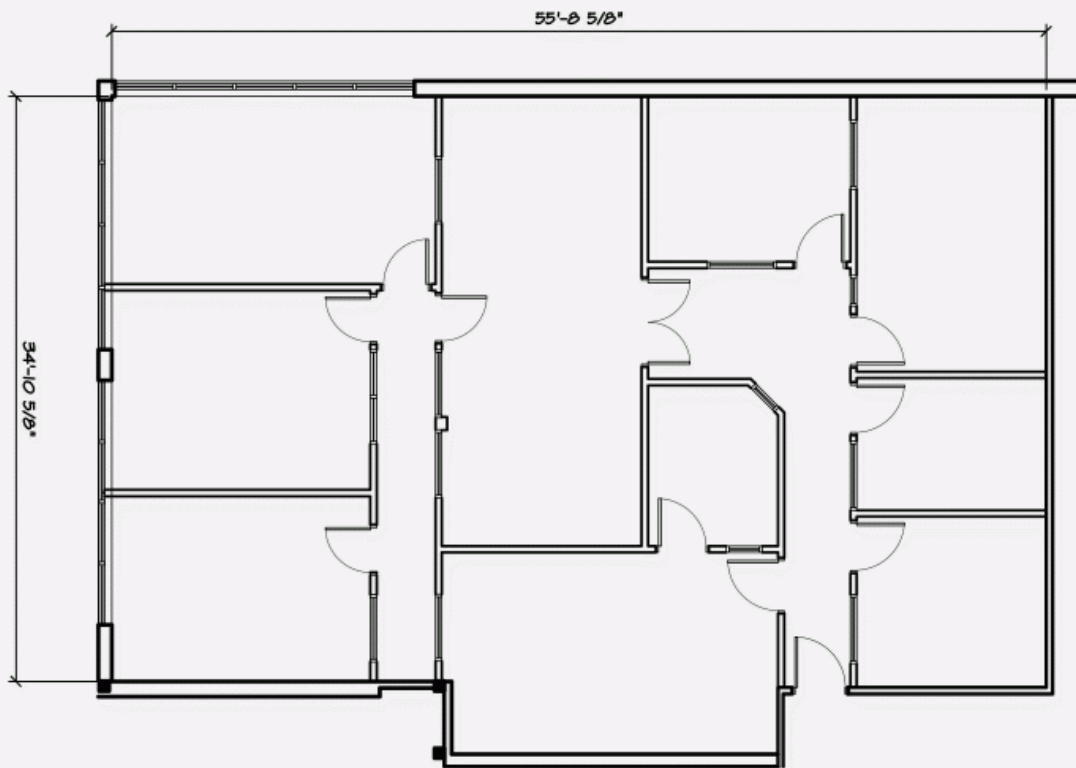


## Space characteristics

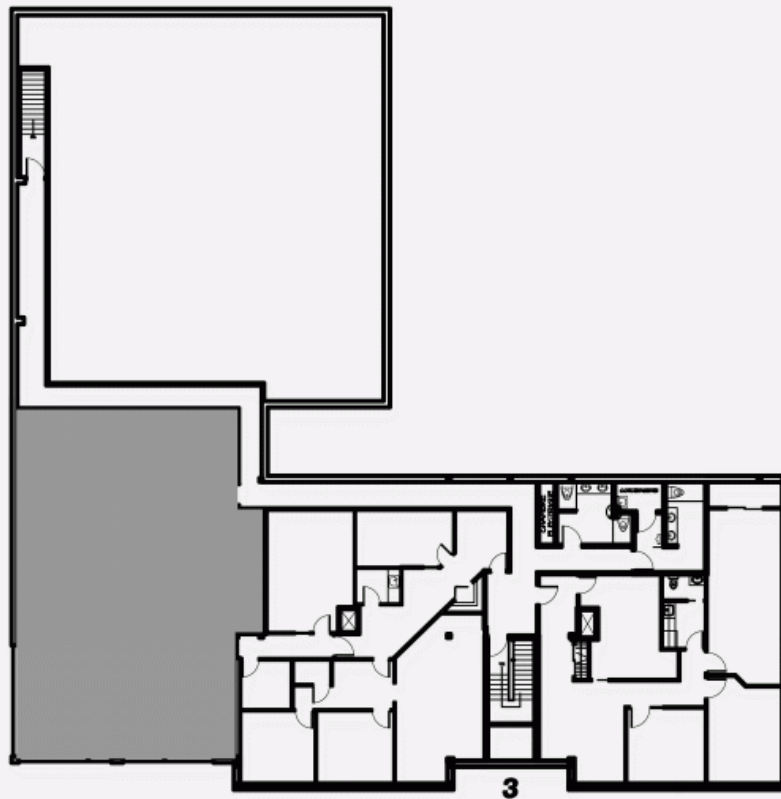
AVAILABLE LEASING AREA	2,417 ft <sup>2</sup>
AVAILABILITY	Immediate
NUMBER OF FLOORS	1
FLOOR AREA	64,491 ft <sup>2</sup>
ADDITIONAL RENT	\$5.63 /ft <sup>2</sup>
COMMENTS / NOTES	It should be noted the additional rent are estimate. They not include energy and cleaning fees.



PLAN - 1



PLAN - 2



**2700 Jean-Perrin Street, Quebec, QC, G2C 1S9**

**Suite #300**

