

# 150 René-Lévesque East Boulevard, Quebec, QC, G1R 2B2

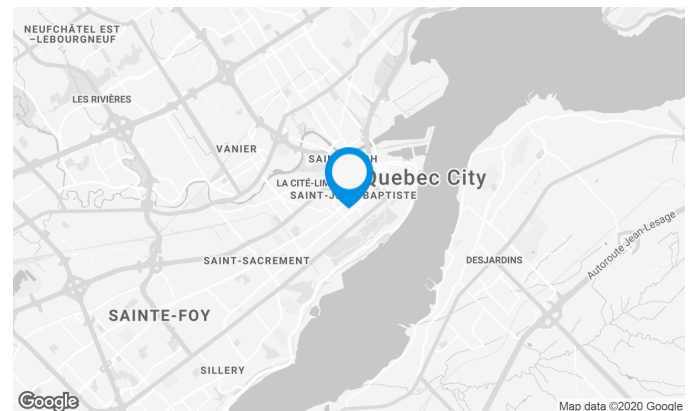
## Suite #140

150 René-Lévesque is a prestigious property located in the uptown district of Québec City. It is surrounded by Public infrastructures (Parliament, Convention centre, Grand Theater, etc.), major hotels and is a few minutes away from Old Québec.

Located near to the public transport access. It is nearby of lots of services, restaurants, hotels, convention center, etc.

### Building characteristics

TOTAL LEASING AREA	228,531 ft <sup>2</sup>
BUILDING AREA	229,329 ft <sup>2</sup>
LAND AREA	36,156 ft <sup>2</sup>
YEAR OF RENOVATION	1990
YEAR OF CONSTRUCTION	1973
NUMBER OF FLOORS	19
ASCENCEURS	5
SPRINKLERS	Yes
SECURITY	Alarm systeme with zone indicator pannel.
BUILDING SERVICES	1 hoist load



### Location Cominar



T 418 681-6300 #2411  
 E LOCATIONQUEBEC@COMINAR.COM

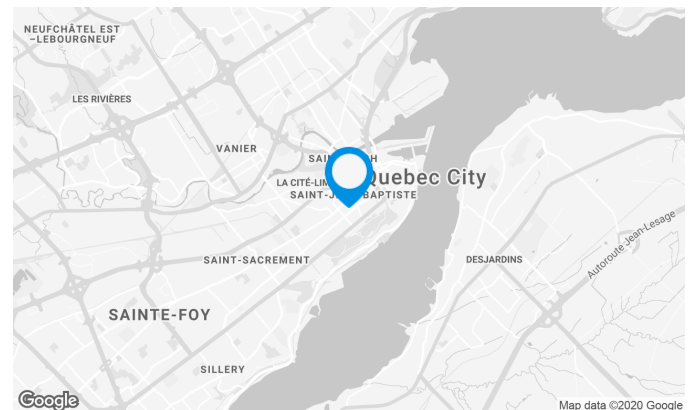
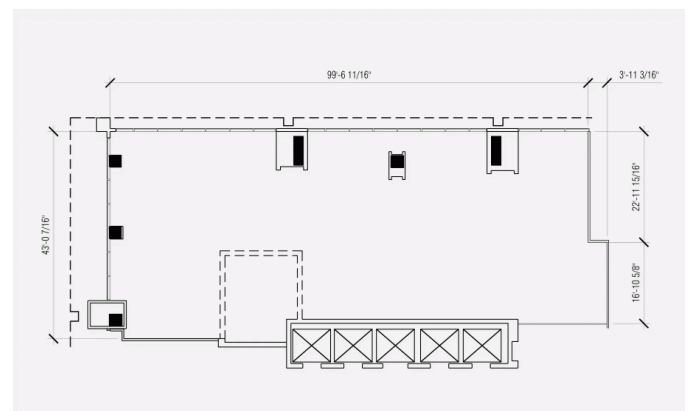
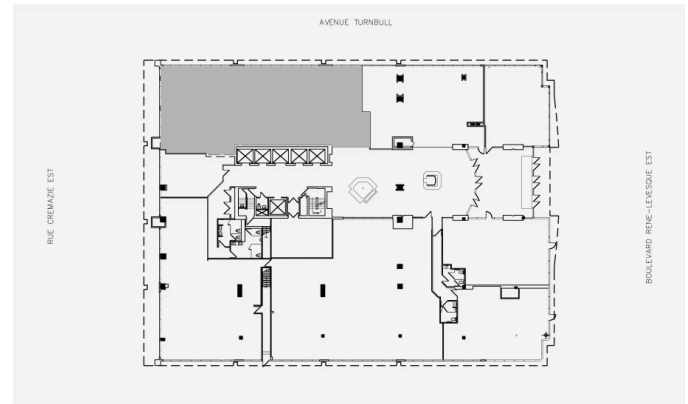
### BUILDING ACCESSIBILITY

INDOOR PARKING	333
ROAD ACCESS	Located at the northwest corner of René-Lévesque Boulevard East and Turnbull Avenue on Parliament Hill in Quebec City
BUS	11, 25, 107, 125, 214, 215, 283, 294, 295, 800, 801, 915

The space is adjacent to room 160 for a possible area of 5,115 square feet.

### Space characteristics

AVAILABLE LEASING AREA	3,941 ft <sup>2</sup>
NUMBER OF FLOORS	1
FLOOR AREA	22,172 ft <sup>2</sup>

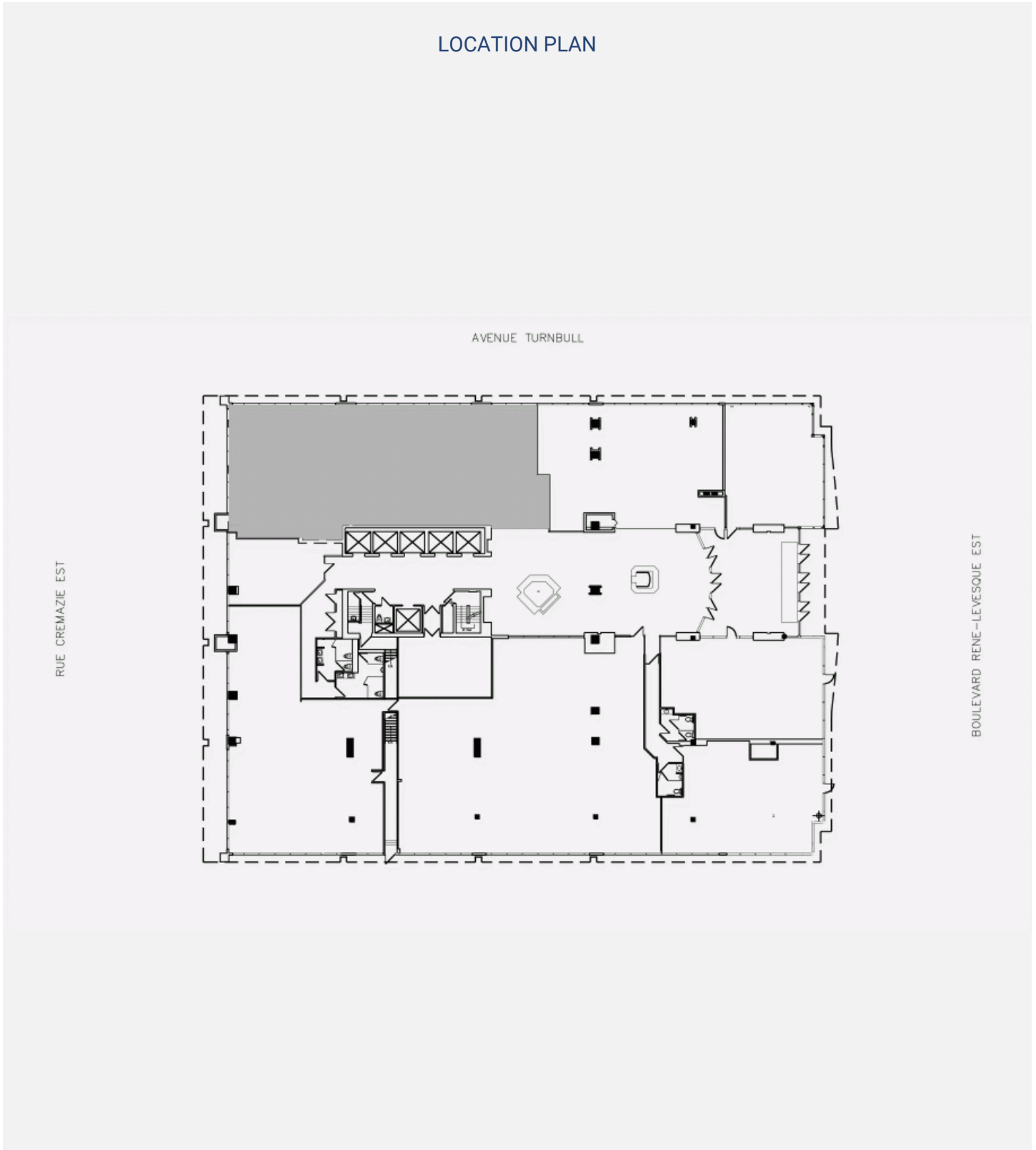


### Location Cominar

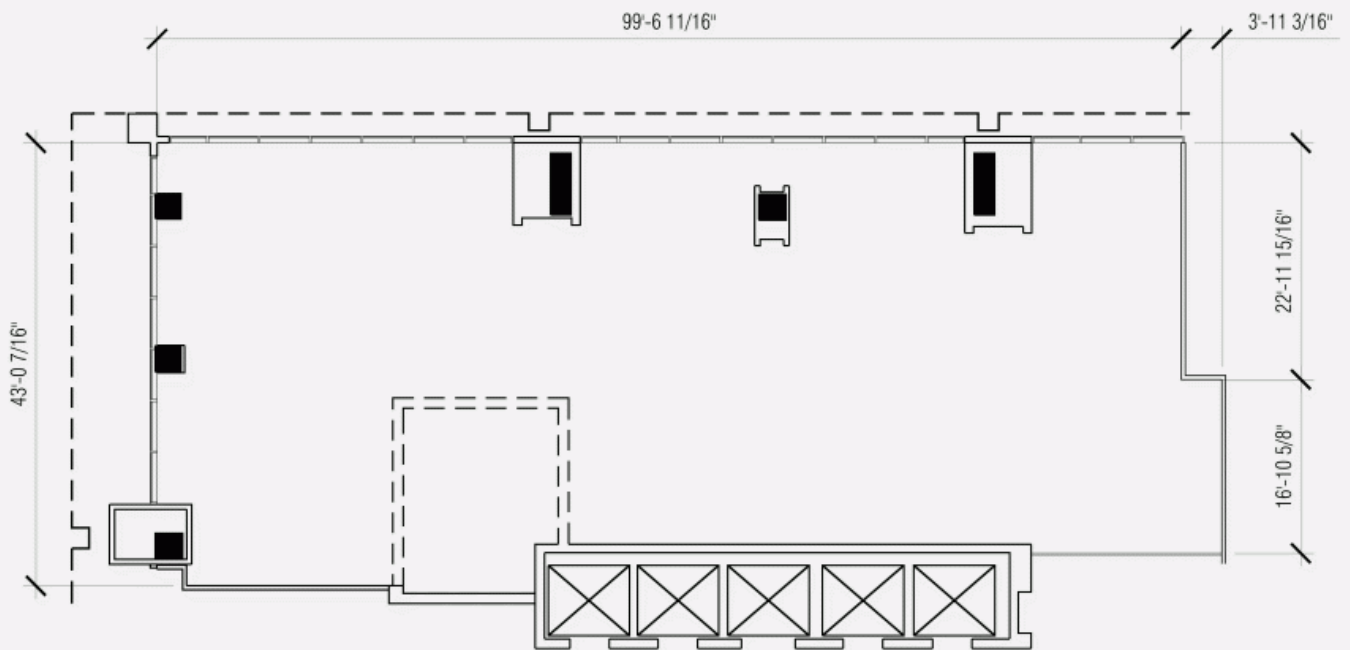


T 418 681-6300 #2411  
E LOCATIONQUEBEC@COMINAR.COM

LOCATION PLAN



DEVELOPMENT PLAN



**150 René-Lévesque East Boulevard, Quebec, QC, G1R 2B2**  
**Suite #140**

