

# 150 René-Lévesque East Boulevard, Quebec, QC, G1R 2B2

## Suite #301



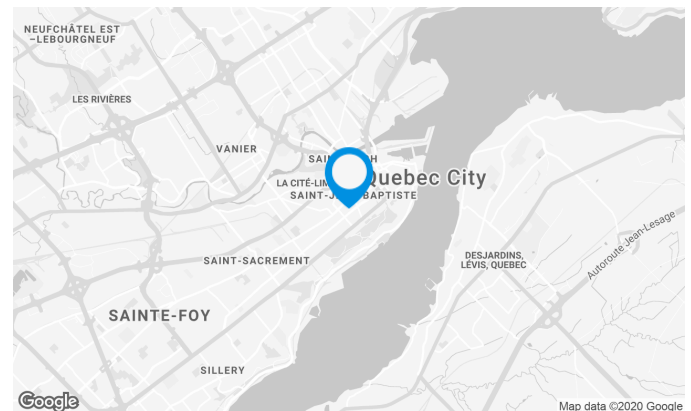
150 René-Lévesque is a prestigious property located in the uptown district of Québec City. It is surrounded by Public infrastructures (Parliament, Convention centre, Grand Theater, etc.), major hotels and is a few minutes away from Old Québec.

Located near to the public transport access. It is nearby of lots of services, restaurants, hotels, convention center, etc.



### Building characteristics

TOTAL LEASING AREA	228,531 ft <sup>2</sup>
BUILDING AREA	229,329 ft <sup>2</sup>
LAND AREA	36,156 ft <sup>2</sup>
YEAR OF RENOVATION	1990
YEAR OF CONSTRUCTION	1973
NUMBER OF FLOORS	19
ASCENCEURS	5
SPRINKLERS	Yes
SECURITY	Alarm systeme with zone indicator pannel.
BUILDING SERVICES	1 hoist load



### Location Cominar



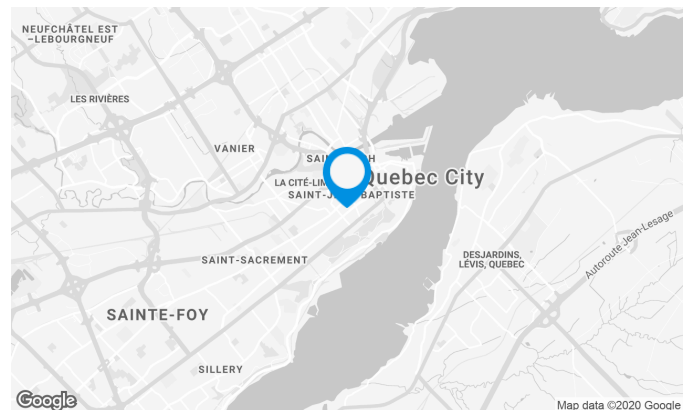
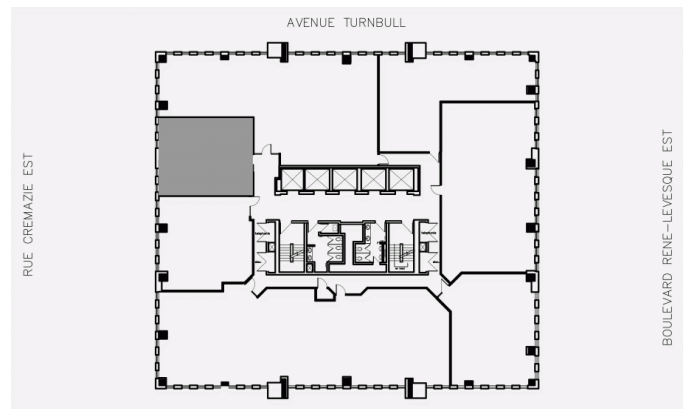
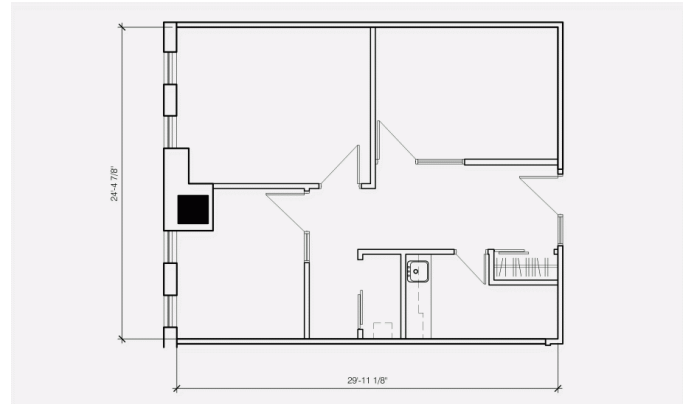
T 418 681-6300 #2411  
E LOCATIONQUEBEC@COMINAR.COM

### BUILDING ACCESSIBILITY

INDOOR PARKING	333
ROAD ACCESS	Located at the northwest corner of René-Lévesque Boulevard East and Turnbull Avenue on Parliament Hill in Quebec City
BUS	11, 25, 107, 125, 214, 215, 283, 294, 295, 800, 801, 915

## Space characteristics

AVAILABLE LEASING AREA	917 ft <sup>2</sup>
NUMBER OF FLOORS	1
FLOOR AREA	11,062 ft <sup>2</sup>
COMMENTS / NOTES	The suite may be contiguous with suite 3XX-302. Possibility of 4 443 square feet.

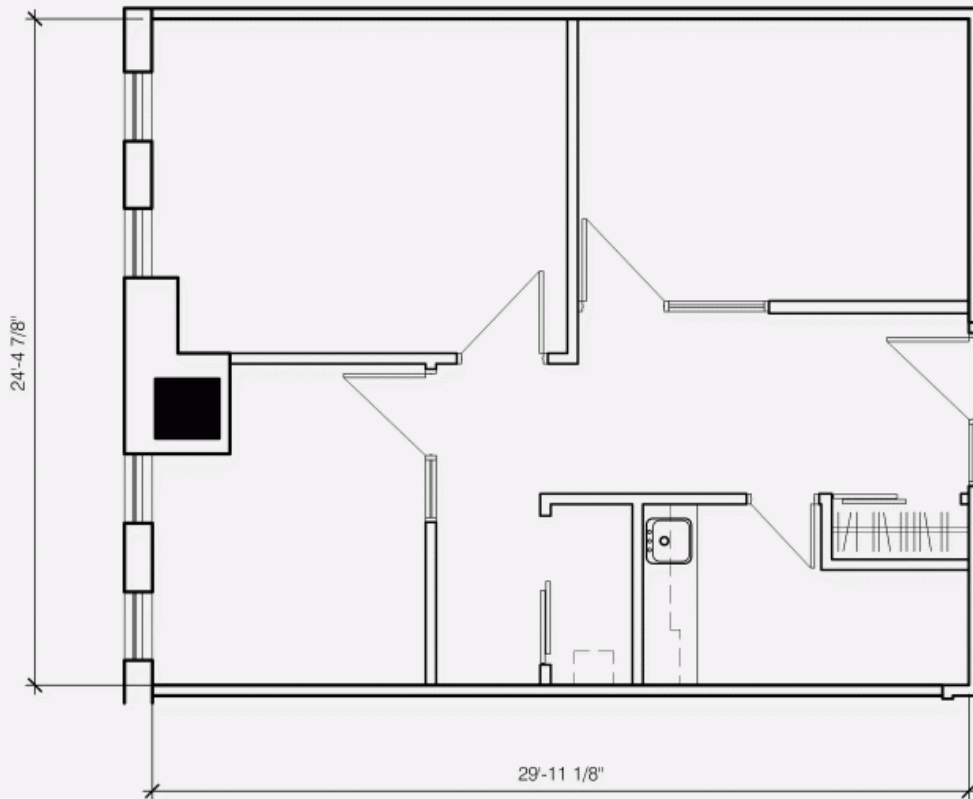


## Location Cominar

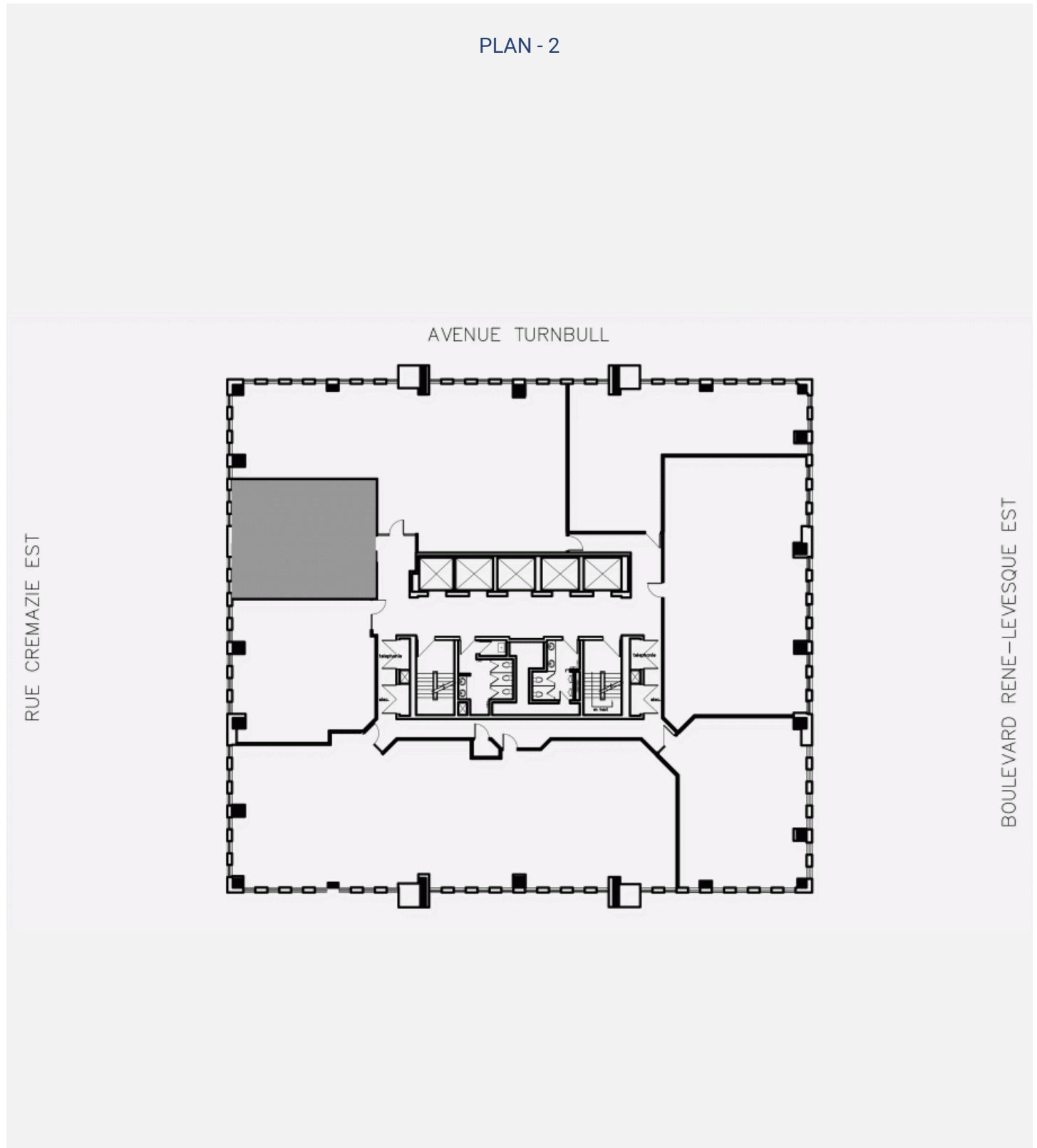


T 418 681-6300 #2411  
E LOCATIONQUEBEC@COMINAR.COM

PLAN - 1



PLAN - 2



**150 René-Lévesque East Boulevard, Quebec, QC, G1R 2B2**  
**Suite #301**

