

4 Place Laval, Laval, QC, H7N 1A1 Suite #570

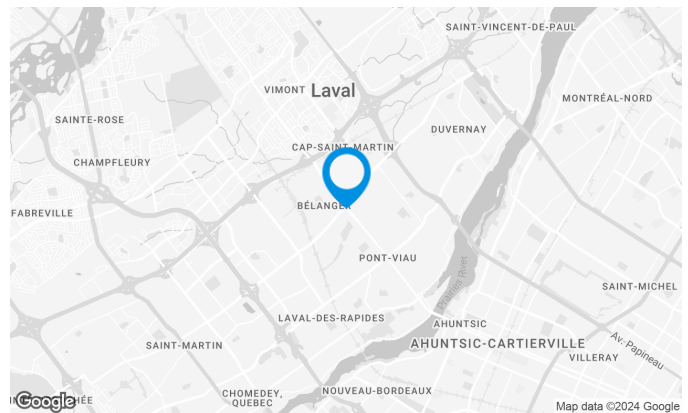
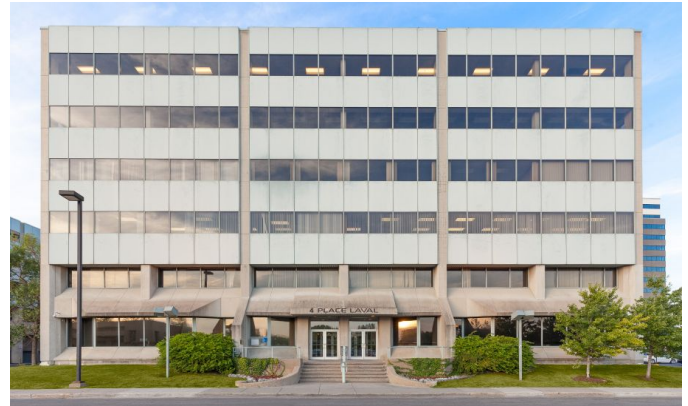
This 6-storey, 140,000-square-foot tower is an integral part of the complex and features a wide range of convenient on-site amenities.

Building characteristics

TOTAL LEASING AREA	140,237 sq. ft.
NUMBER OF FLOORS	6
ASCENCEURS	2
OPTICAL FIBER	Yes
SPRINKLERS	Yes
HVAC HOURS	Monday to Friday: 7:30 AM to 6 PM
SECURITY	Security guards, access cards, cameras
BUILDING SERVICES	Currency Exchange, Tobacco Shop, Telecommunication Service, Bistro

BUILDING ACCESSIBILITY

PARC À VÉLOS DISPONIBLE	Yes
ROAD ACCESS	Des Laurentides Boulevard (335), Saint-Martin Boulevard West, De Grenoble Street
BUS	17, 27, 31, 41, 43, 60, 73, 74



Julie Coulombe

LEASING ASSISTANT
LEASING

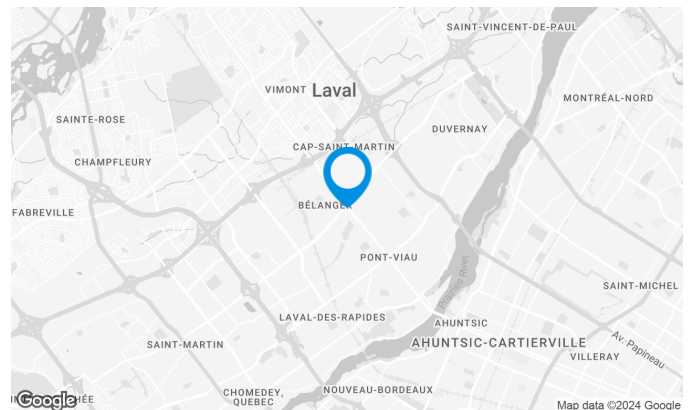
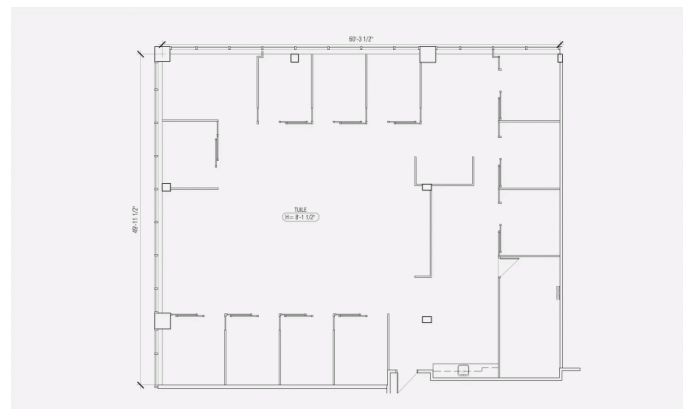
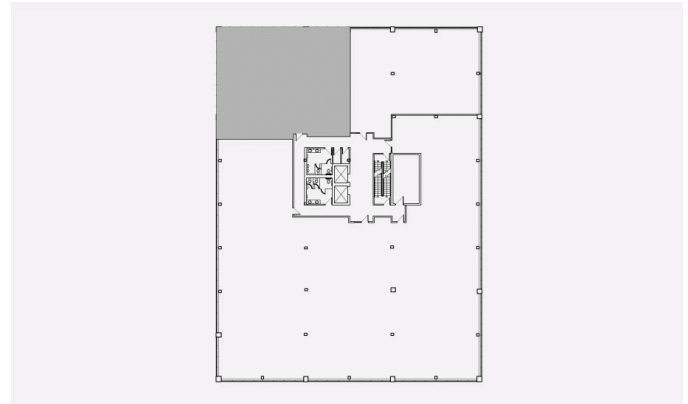
T 418 681-6300

E JULIE.COULOMBE@COMINAR.COM

4 Place Laval, Laval, QC, H7N 1A1 Suite #570

Space characteristics

AVAILABLE LEASING AREA	3,478 sq. ft.
AVAILABILITY	Immediate
NUMBER OF FLOORS	1
FLOOR AREA	15,000 sq. ft.
ADDITIONAL RENT	\$13.00 /sq. ft.
ENERGY	Included



Julie Coulombe

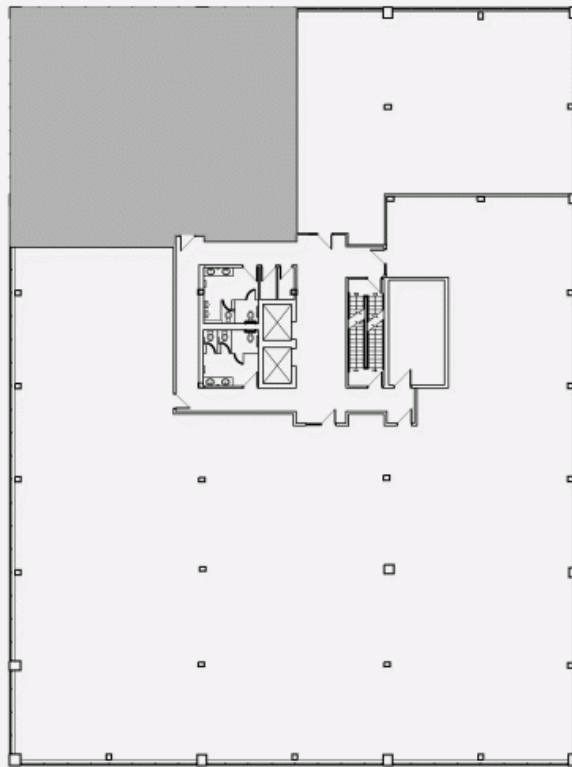
LEASING ASSISTANT
LEASING

T 418 681-6300

E JULIE.COULOMBE@COMINAR.COM

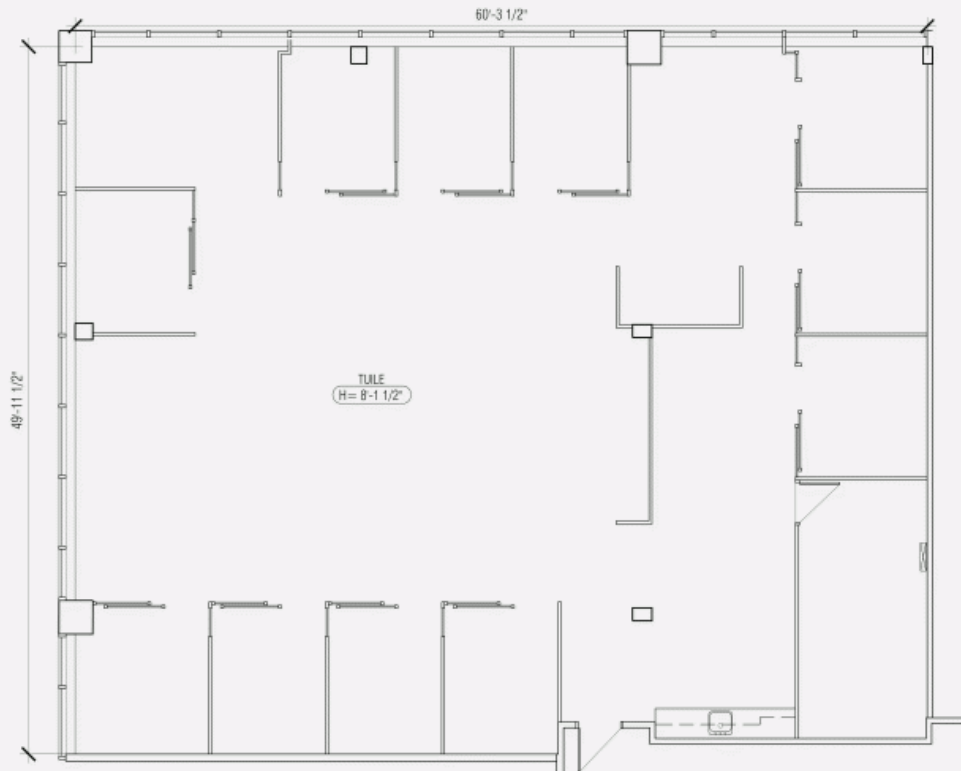
4 Place Laval, Laval, QC, H7N 1A1
Suite #570

LOCATION PLAN



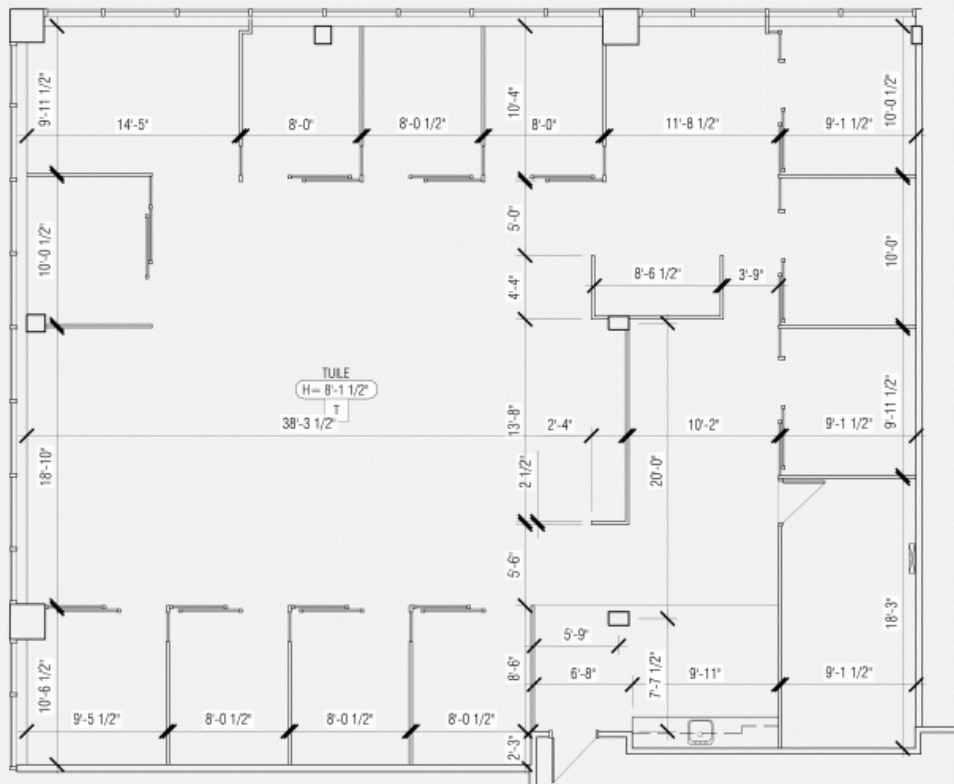
4 Place Laval, Laval, QC, H7N 1A1
Suite #570

LAYOUT PLAN



4 Place Laval, Laval, QC, H7N 1A1
Suite #570

PLAN WITH DIMENSIONS



4 Place Laval, Laval, QC, H7N 1A1 Suite #570

PLAN WITHOUT LAYOUT

