

2 Place Laval, Laval, QC, H7N 1A1

Suite #500-520

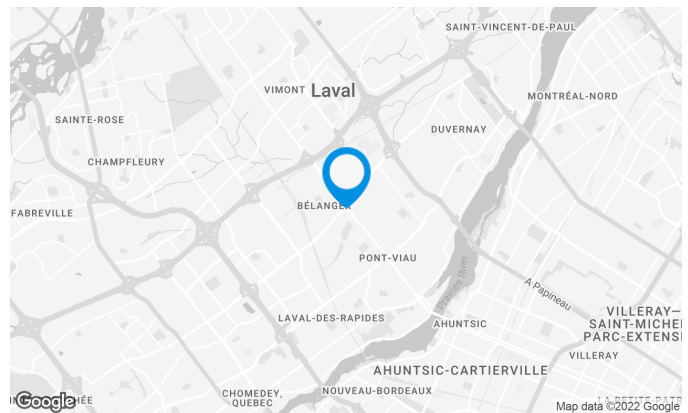
This tower boasts a prime location at the corner of Saint-Martin Boulevard and Grenoble Street, with a total of 100,000 square feet of rental space over 5 levels.

Building characteristics

TOTAL LEASING AREA	101,930 ft ²
NUMBER OF FLOORS	5
ASCENCEURS	2
OPTICAL FIBER	Yes
SPRINKLERS	Yes
HVAC HOURS	Monday to Friday: 7:30 AM to 6 PM
SECURITY	Security guards, access cards, cameras
BUILDING SERVICES	Bank

BUILDING ACCESSIBILITY

PARC À VÉLOS DISPONIBLE	Yes
ROAD ACCESS	Des Laurentides Boulevard (335), Saint-Martin Boulevard West, De Grenoble Street
BUS	17, 27, 31, 41, 43, 60, 73, 74



Julie Godbout

LEASING DIRECTOR
LEASING - OFFICES, MONTREAL AREA

T 514 737-3344 #3485

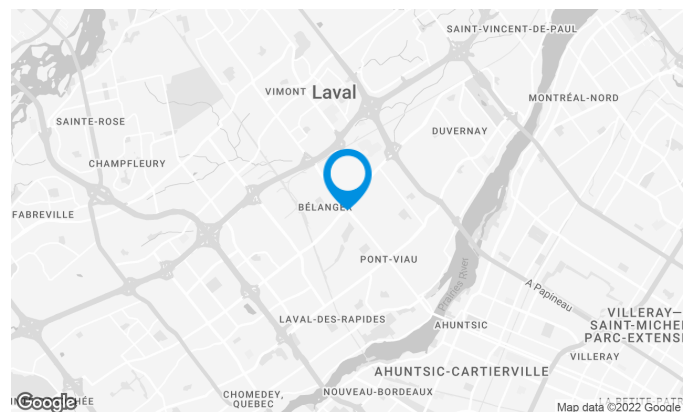
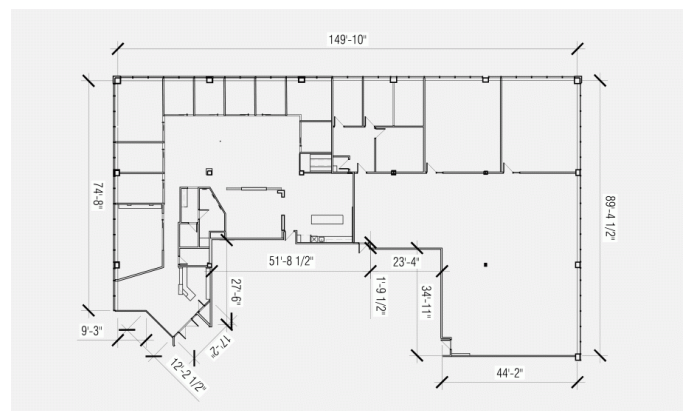
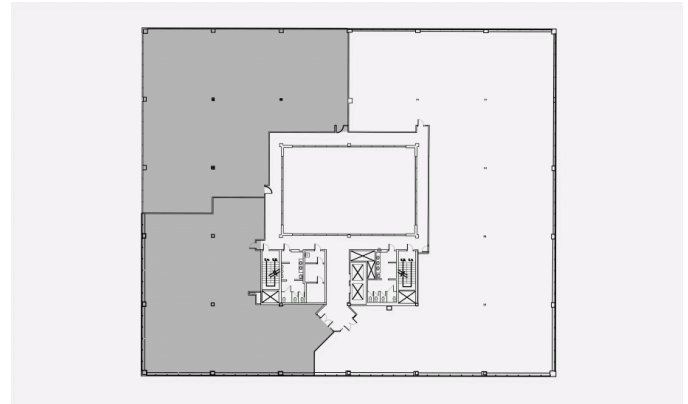
C 514 238-7079

E JULIE.GODBOUT@COMINAR.COM

2 Place Laval, Laval, QC, H7N 1A1 Suite #500-520

Space characteristics

AVAILABLE LEASING AREA	11,893 ft ²
AVAILABILITY	Immediate
NUMBER OF FLOORS	1
FLOOR AREA	25,000 ft ²
ADDITIONAL RENT	\$13.60 /ft ²
ENERGY	Included
COMMENTS / NOTES	Existing improvements



Julie Godbout

LEASING DIRECTOR
LEASING - OFFICES, MONTREAL AREA

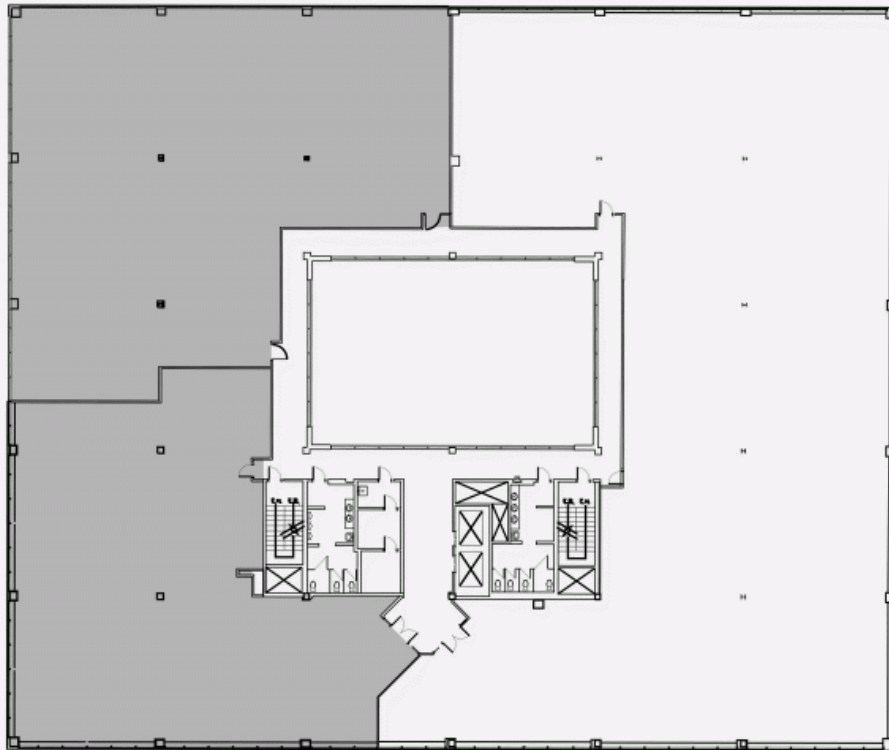
T 514 737-3344 #3485

C 514 238-7079

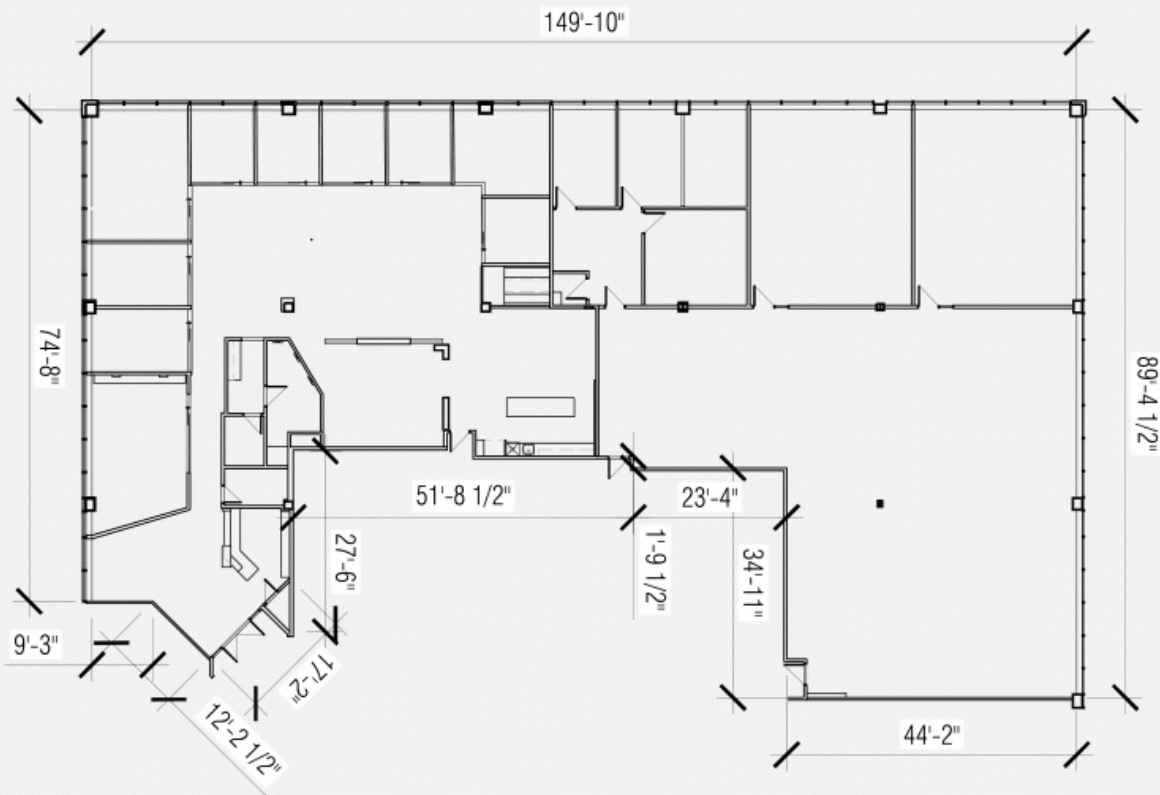
E JULIE.GODBOUT@COMINAR.COM

2 Place Laval, Laval, QC, H7N 1A1
Suite #500-520

LOCATION PLAN



LAYOUT PLAN



2 Place Laval, Laval, QC, H7N 1A1
Suite #500-520

