

2 Place Laval, Laval, QC, H7N 1A1

Suite #470



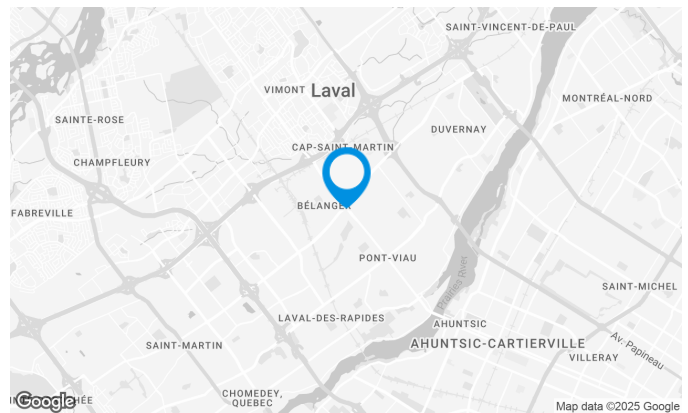
This tower boasts a prime location at the corner of Saint-Martin Boulevard and Grenoble Street, with a total of 100,000 square feet of rental space over 5 levels.

Building characteristics

TOTAL LEASING AREA	101,930 sq. ft.
NUMBER OF FLOORS	5
ASCENCEURS	2
OPTICAL FIBER	Yes
SPRINKLERS	Yes
HVAC HOURS	Monday to Friday: 7:30 AM to 6 PM
SECURITY	Security guards, access cards, cameras
BUILDING SERVICES	Bank

BUILDING ACCESSIBILITY

PARC À VÉLOS DISPONIBLE	Yes
ROAD ACCESS	Des Laurentides Boulevard (335), Saint-Martin Boulevard West, De Grenoble Street
BUS	17, 27, 31, 41, 43, 60, 73, 74



Julie Coulombe

LEASING ASSISTANT
LEASING

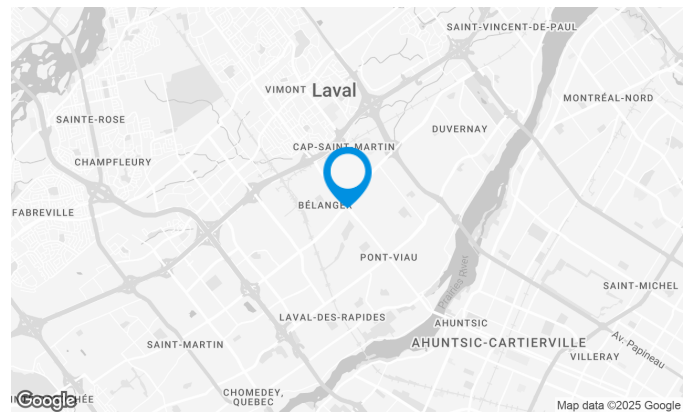
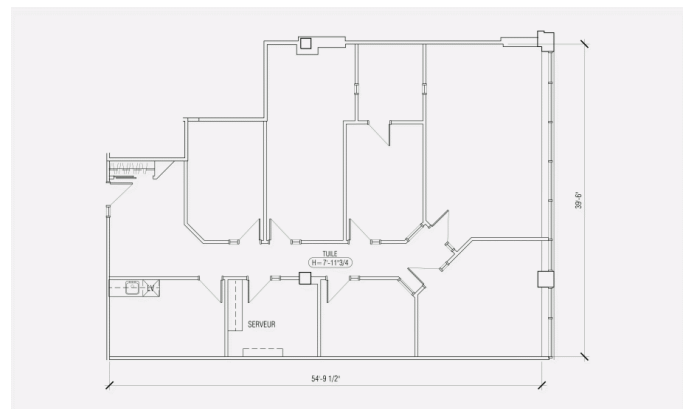
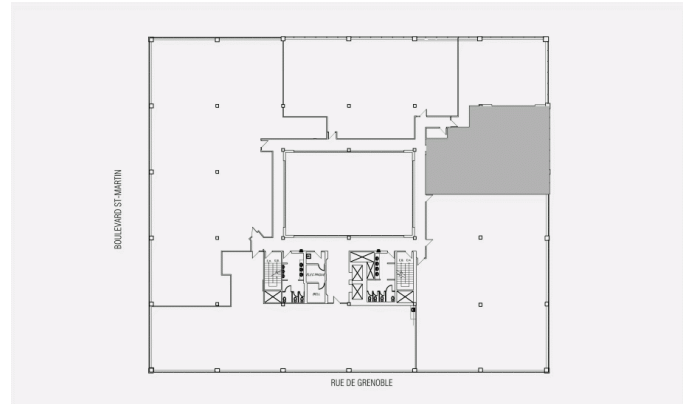
T 418 681-6300

E JULIE.COULOMBE@COMINAR.COM

2 Place Laval, Laval, QC, H7N 1A1 Suite #470

Space characteristics

AVAILABLE LEASING AREA	2,289 sq. ft.
AVAILABILITY	Immediate
NUMBER OF FLOORS	1
FLOOR AREA	25,000 sq. ft.
ADDITIONNAL RENT	\$14.05 /sq. ft.
ENERGY	Included



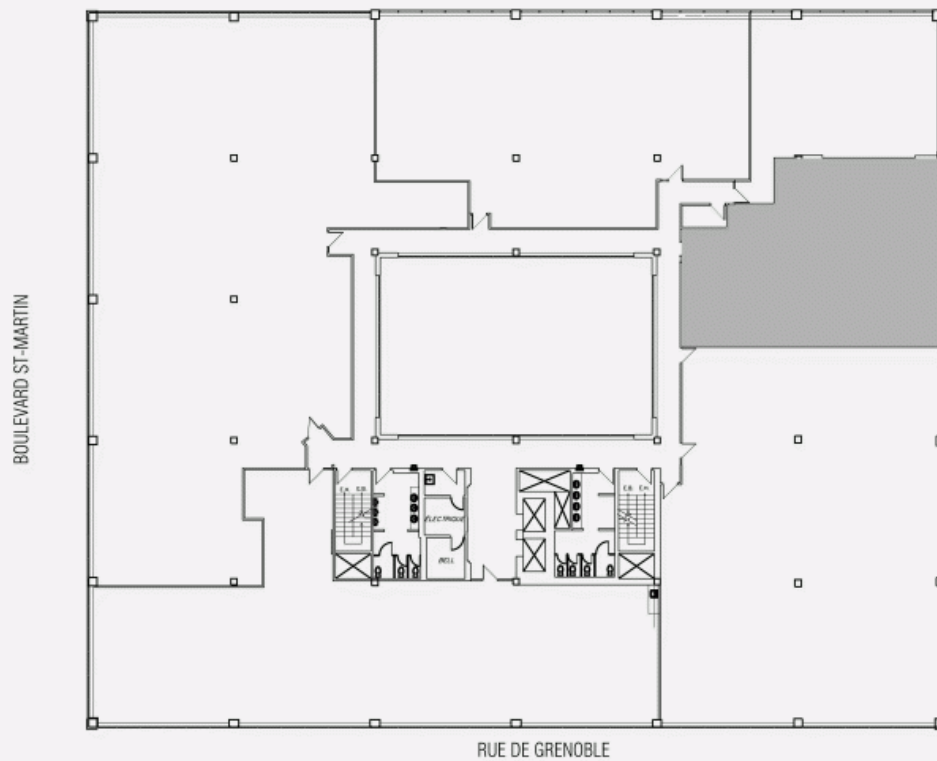
Julie Coulombe

LEASING ASSISTANT
LEASING

T 418 681-6300

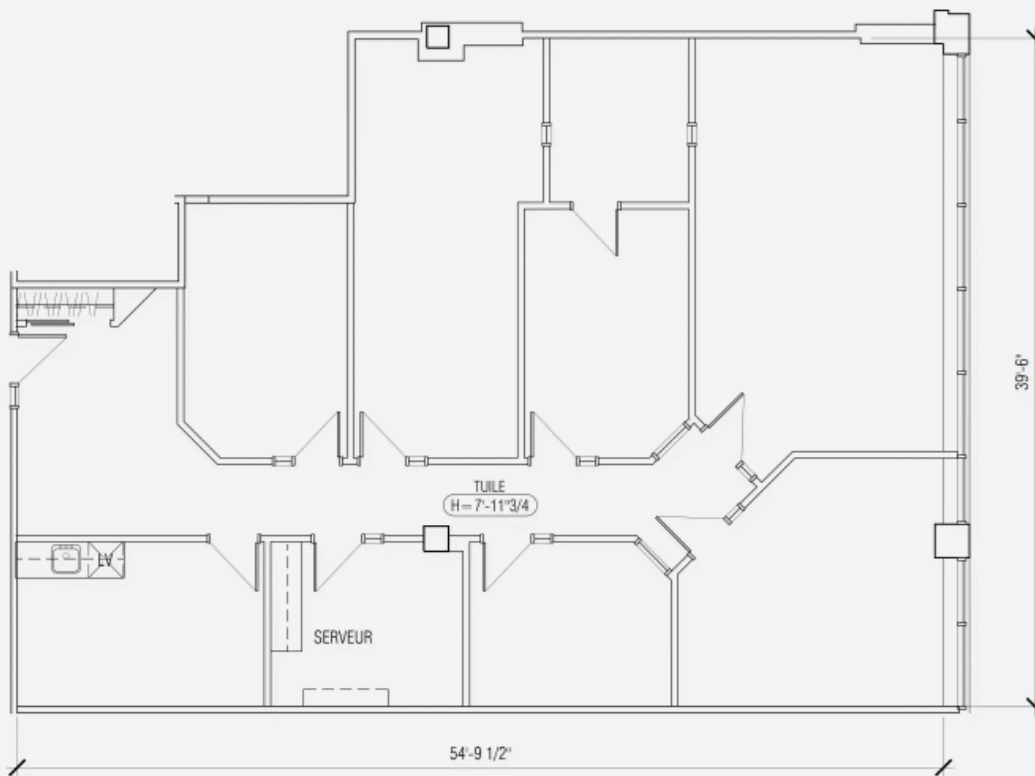
E JULIE.COULOMBE@COMINAR.COM

LOCATION PLAN



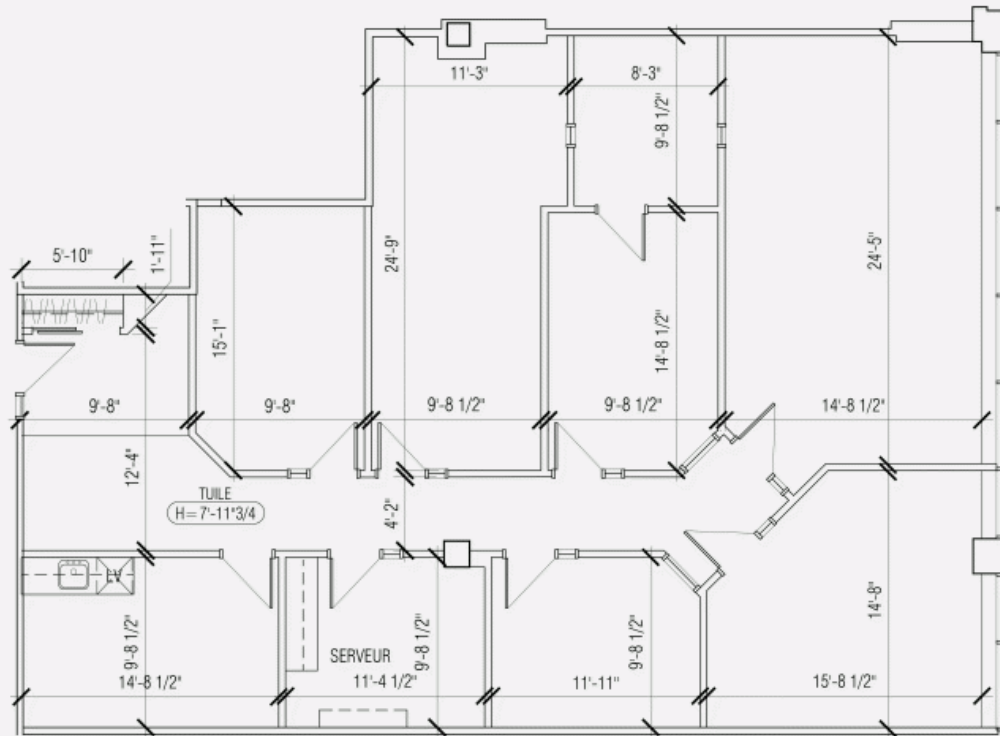
2 Place Laval, Laval, QC, H7N 1A1
Suite #470

LAYOUT PLAN

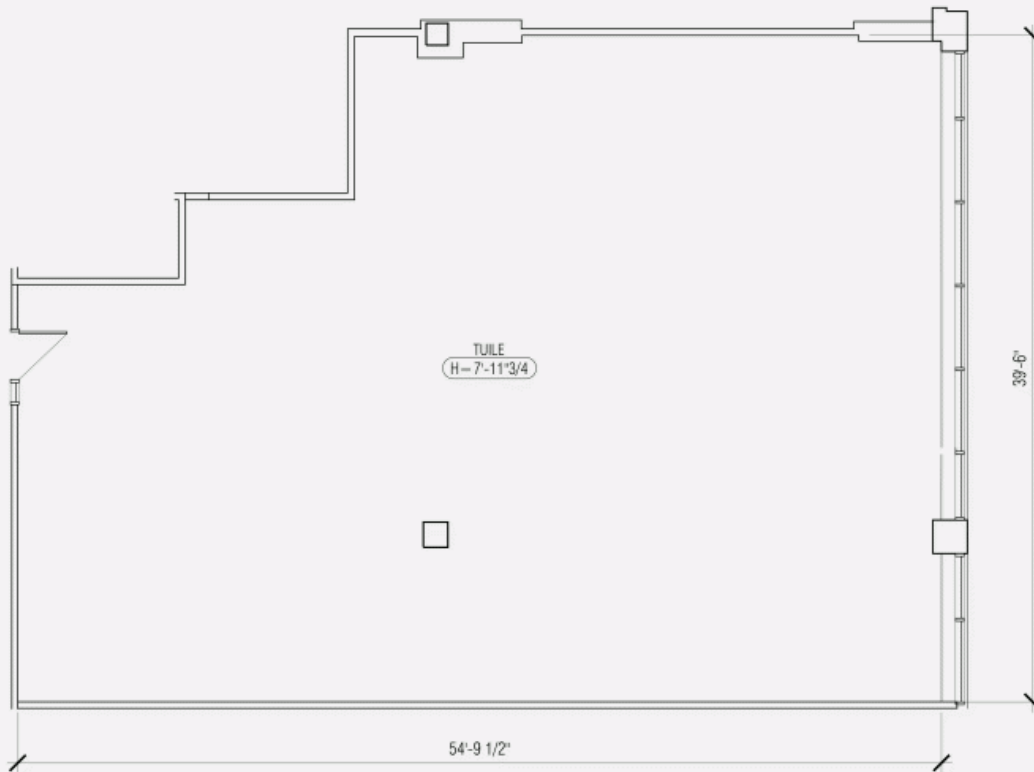


2 Place Laval, Laval, QC, H7N 1A1 Suite #470

LAYOUT PLAN WITH DIMENSIONS



PLAN WITHOUT IMPROVEMENTS



2 Place Laval, Laval, QC, H7N 1A1
Suite #470

