

2 Place Laval, Laval, QC, H7N 1A1

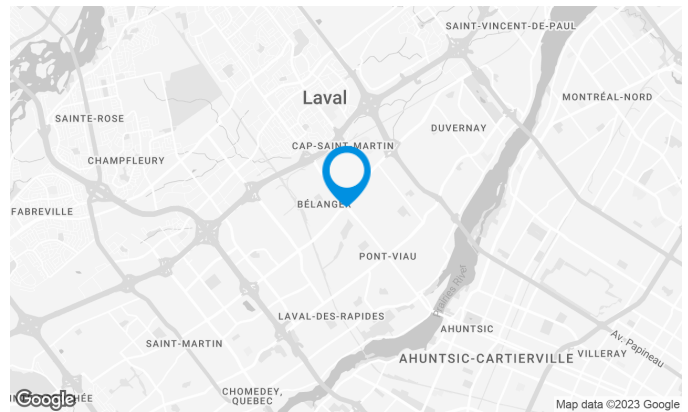
This tower boasts a prime location at the corner of Saint-Martin Boulevard and Grenoble Street, with a total of 100,000 square feet of rental space over 5 levels.

Building characteristics

TOTAL LEASING AREA	101,930 sq. ft.
NUMBER OF FLOORS	5
ELEVATORS	2
OPTICAL FIBER	Yes
SPRINKLERS	Yes
HVAC HOURS	Monday to Friday: 7:30 AM to 6 PM
SECURITY	Security guards, access cards, cameras
BUILDING SERVICES	Bank

BUILDING ACCESSIBILITY

PARC À VÉLOS DISPONIBLE	Yes
ROAD ACCESS	Des Laurentides Boulevard (335), Saint-Martin Boulevard West, De Grenoble Street
BUS	17, 27, 31, 41, 43, 60, 73, 74



François Laurence

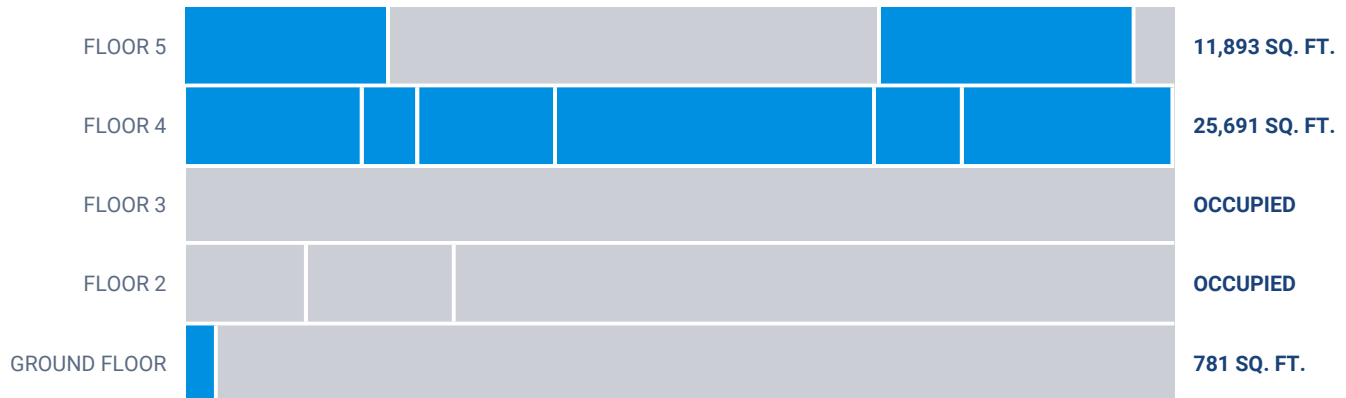
TRANSACTION MANAGER
COMMERCIAL REAL ESTATE BROKER
COLLIERS

T 514 764-8197

C 514 299-3901

E FRANCOIS.LAURENCE@COLLIERS.COM

Available leasing areas from 781 sq. ft. to 25,691 sq. ft.



List of available offices

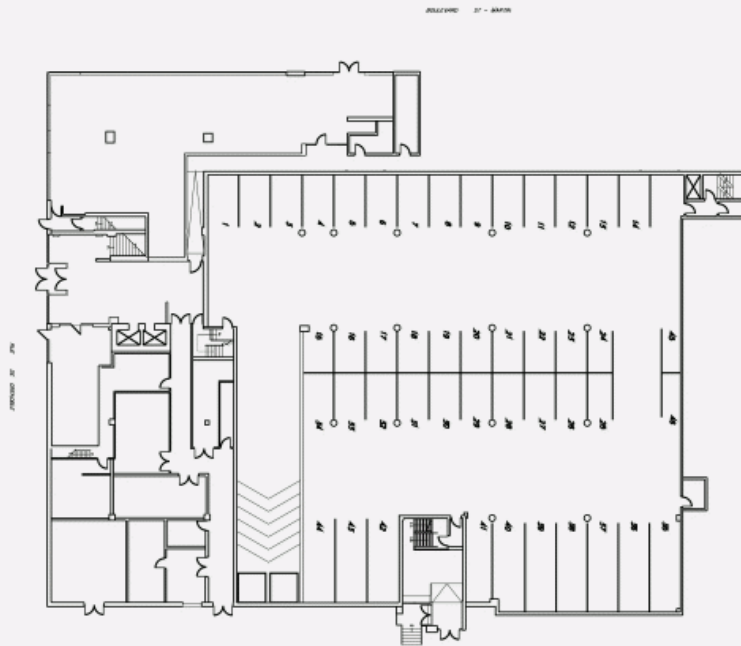
SUITE	FLOOR	AVAILABILITY	AREA
Suite #100	RDC	Immediate	781 sq. ft.
Suite #290	2		3,851 sq. ft.
Suite #275	2		3,126 sq. ft.
Suite #460	4	30 jours	5,483 sq. ft.
Suite #470	4	Immediate	2,289 sq. ft.
4th Floor	4	Immediate	25,691 sq. ft.
Suite #400	4	60 jours	8,304 sq. ft.
Suites #475-#485	4		5,034 sq. ft.
Suite #430	4	Immediate	4,581 sq. ft.
Suite #475	4	Immediate	1,446 sq. ft.
Suite #485	4	Immediate	3,588 sq. ft.

List of available offices

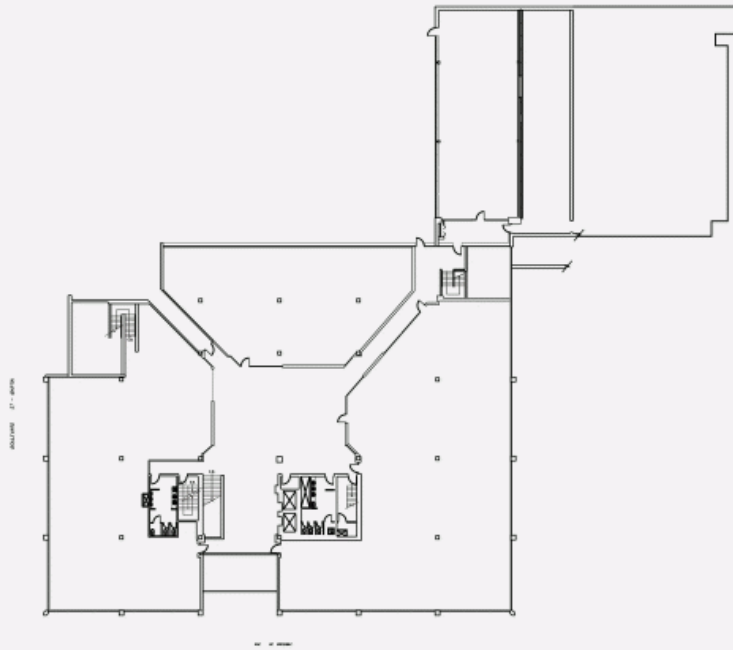
SUITE	FLOOR	AVAILABILITY	AREA
Suite #500-520	5	Immediate	11,893 sq. ft.
Suite #520	5	Immediate	6,630 sq. ft.
Suite #500	5	Immediate	5,263 sq. ft.
Suite #500-510	5		18,051 sq. ft.
Suite #510	5		12,788 sq. ft.



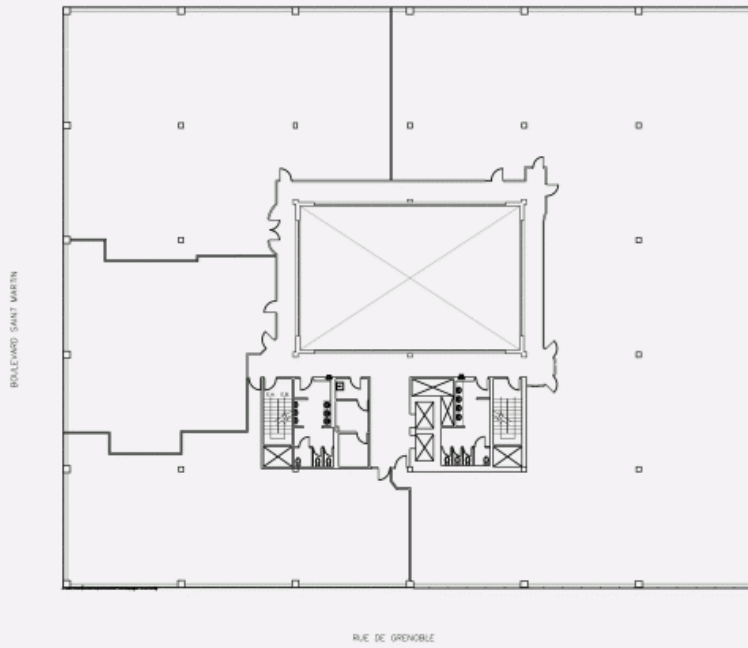
GROUND FLOOR PLAN



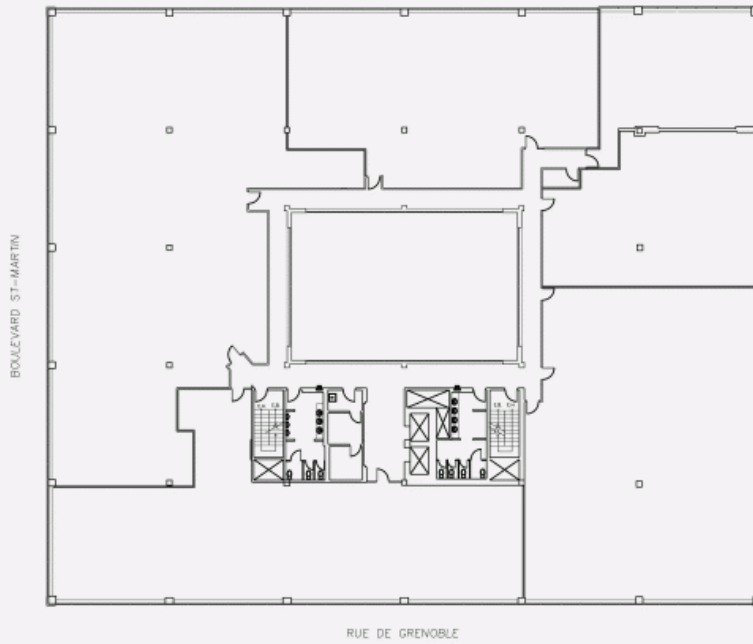
2ND FLOOR PLAN



3RD FLOOR PLAN



4TH FLOOR PLAN



5TH FLOOR PLAN

