

1 Place Laval, Laval, QC, H7N 1A1 Suite #500

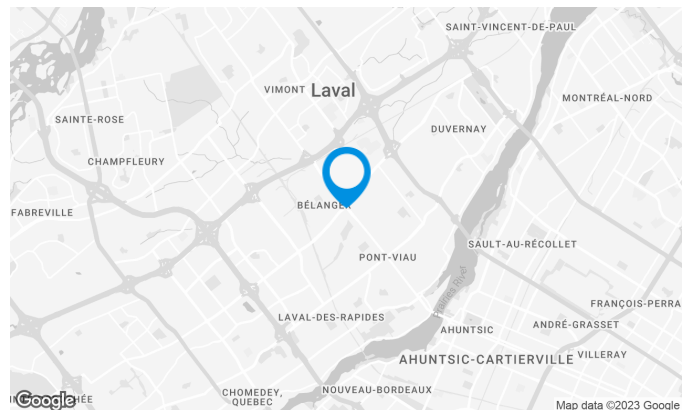
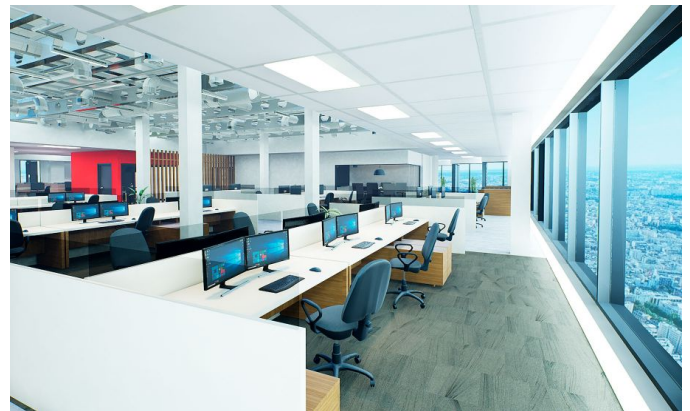
6-storey building with more than 110,000 square feet in leasable area, strategically located at the intersection of Saint-Martin and Des Laurentides Boulevards.

Building characteristics

TOTAL LEASING AREA	109,000 sq. ft.
NUMBER OF FLOORS	6
ASCENCEURS	2
SPRINKLERS	Yes
GENERATOR	Yes
HVAC HOURS	Monday to Friday: 7:30 AM to 6 PM
SECURITY	Security guard, access cards, cameras
BUILDING SERVICES	Bank, daycare

BUILDING ACCESSIBILITY

PARC À VÉLOS DISPONIBLE	Yes
ROAD ACCESS	Des Laurentides Boulevard (335), Saint-Martin Boulevard West, De Grenoble Street
BUS	17, 27, 31, 41, 43, 60, 73, 74



Meggie Bergevin
TRANSACTION MANAGER
COMMERCIAL REAL ESTATE BROKER

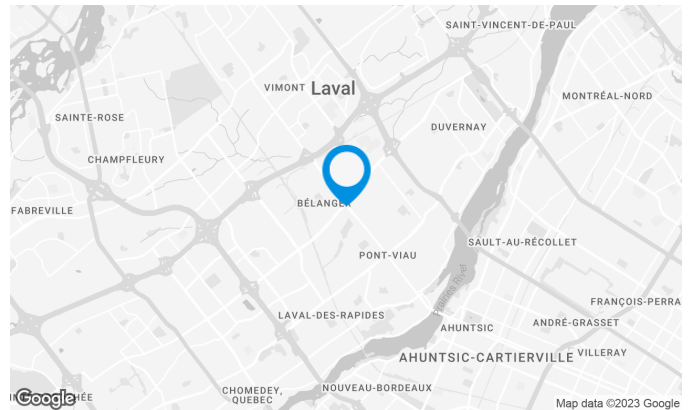
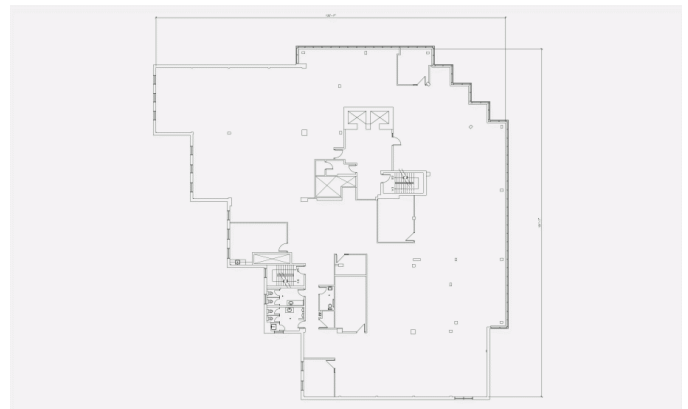
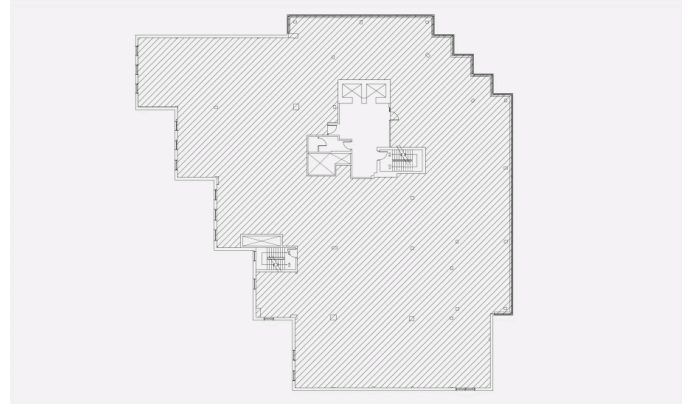


T 514 458-1731
E MEGGIE.BERGEVIN@CUSHWAKE.COM

1 Place Laval, Laval, QC, H7N 1A1 Suite #500

Space characteristics

AVAILABLE LEASING AREA	13,352 sq. ft.
AVAILABILITY	Immediate
NUMBER OF FLOORS	1
FLOOR AREA	13,352 sq. ft.
ADDITIONAL RENT	\$12.28 /sq. ft.
ENERGY	Included



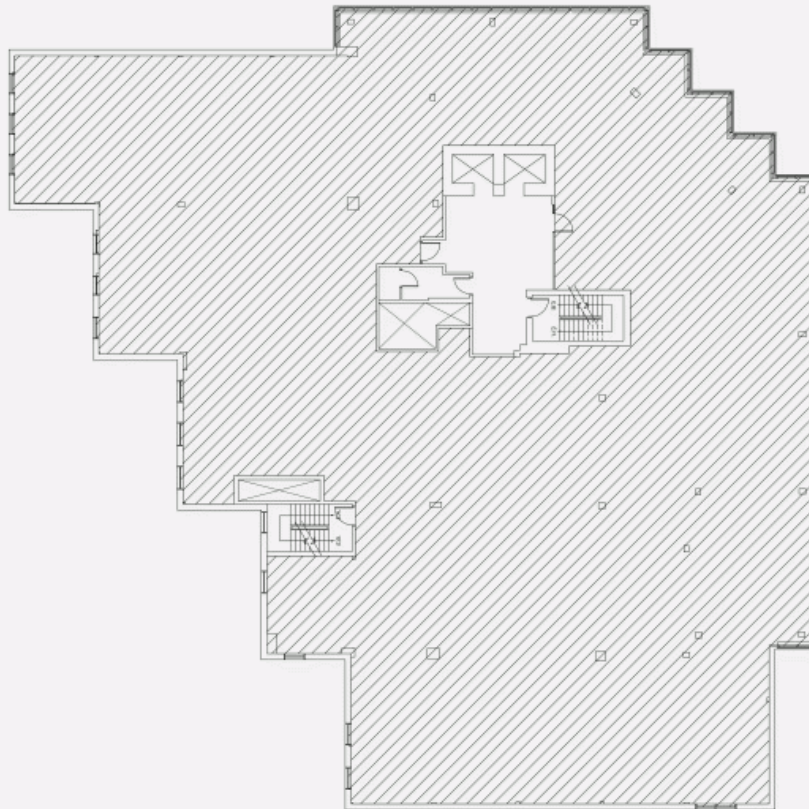
Meggie Bergevin

TRANSACTION MANAGER
COMMERCIAL REAL ESTATE BROKER
CUSHMAN & WAKEFIELD

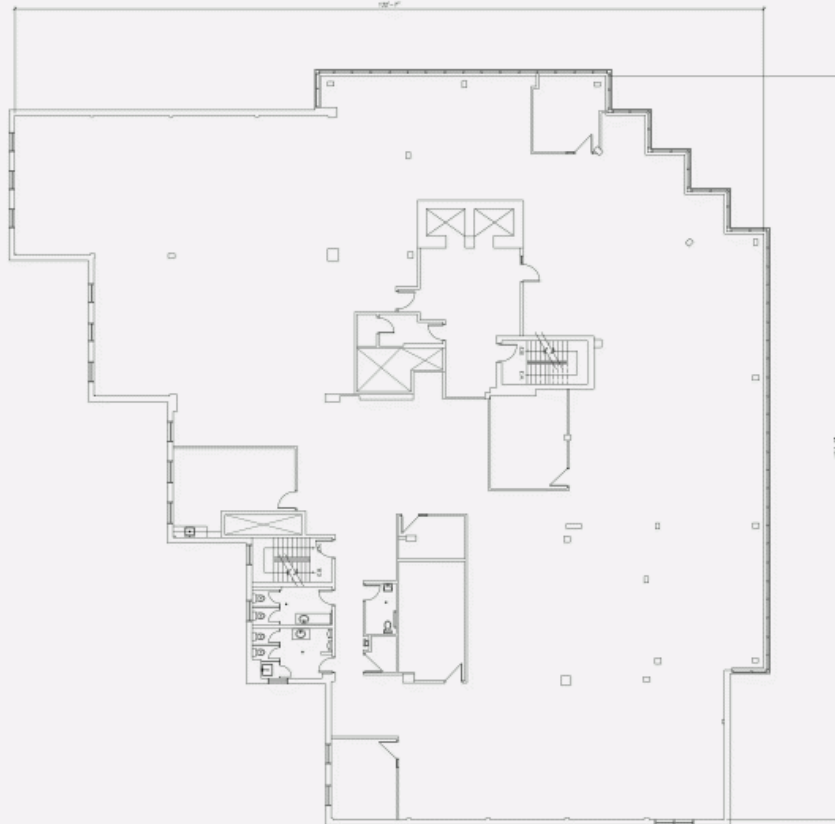
T 514 458-1731

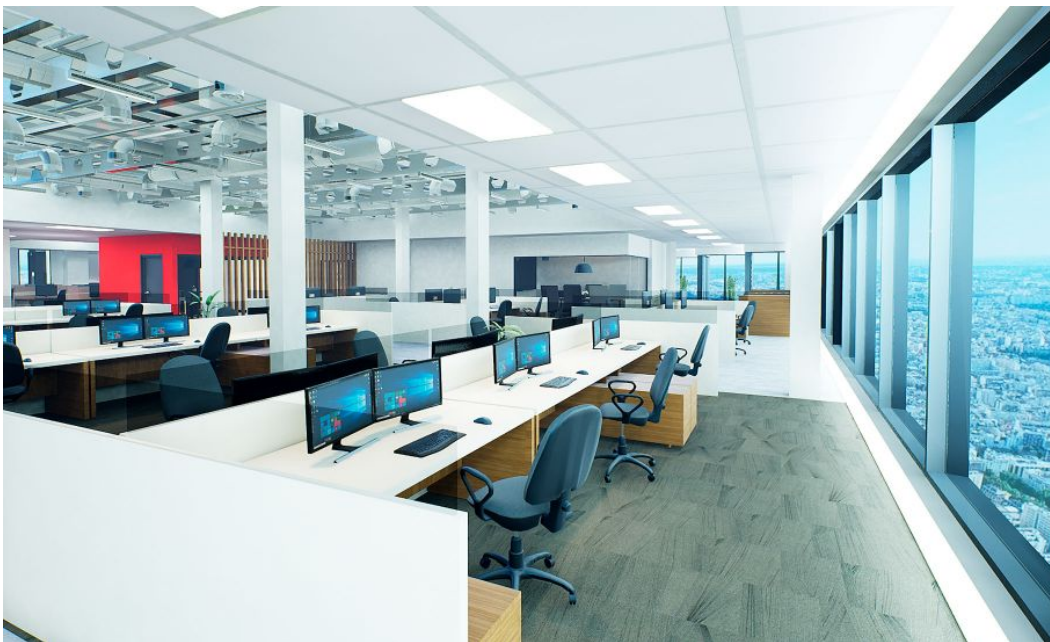
E MEGGIE.BERGEVIN@CUSHWAKE.COM

LOCATION PLAN



LAYOUT PLAN



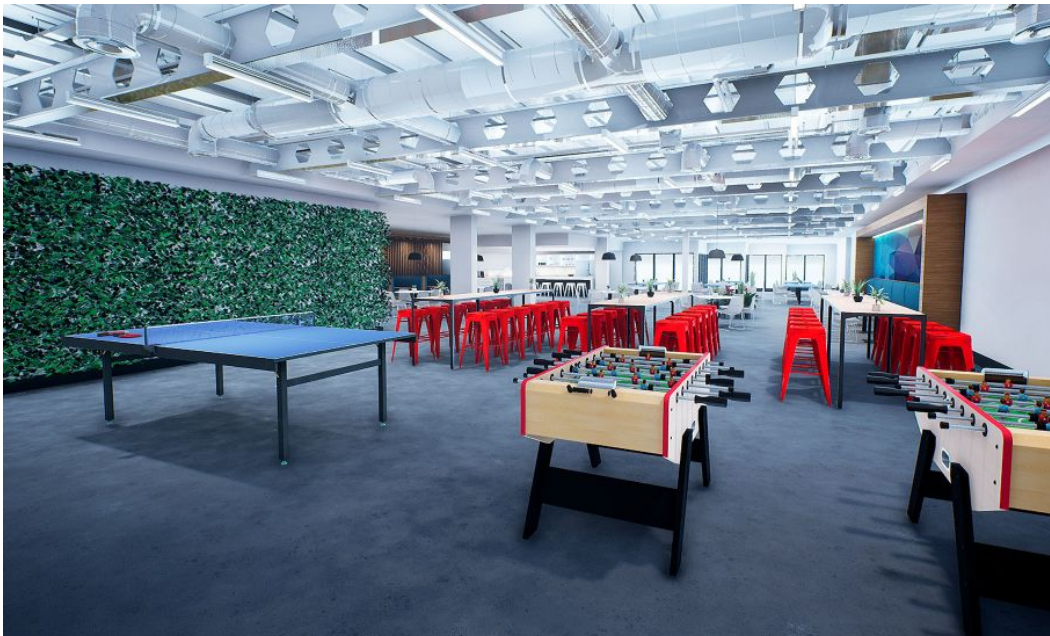


Modeling - artistic representation only

1 Place Laval, Laval, QC, H7N 1A1
Suite #500



Modeling - artistic representation only

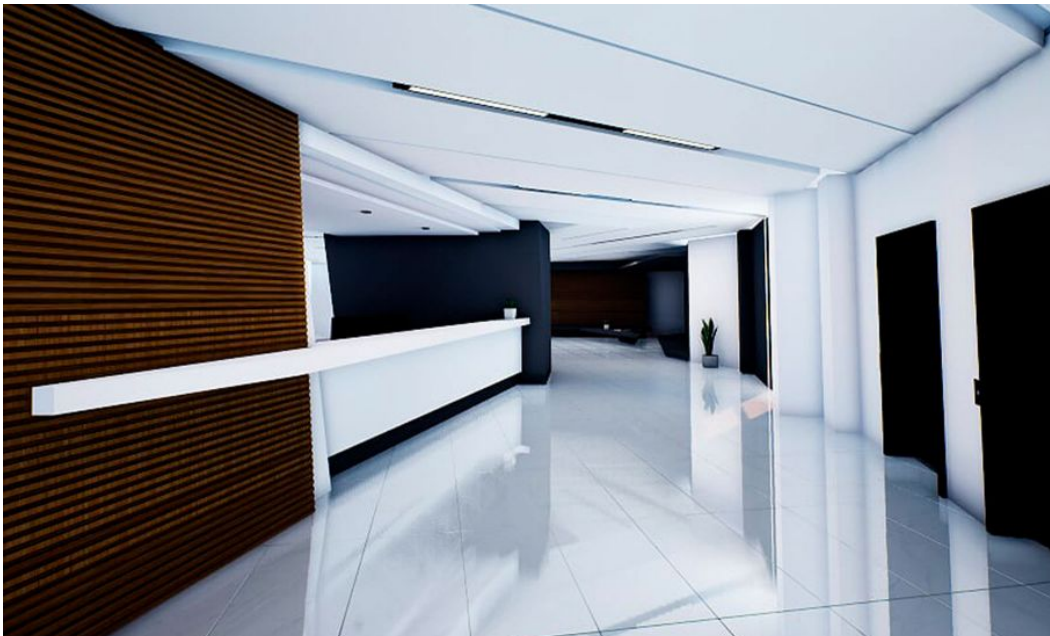


Modeling - artistic representation only

1 Place Laval, Laval, QC, H7N 1A1
Suite #500



Modeling - artistic representation only



Modeling - artistic representation only

1 Place Laval, Laval, QC, H7N 1A1
Suite #500



Modeling - artistic representation only