

1 Place Laval, Laval, QC, H7N 1A1

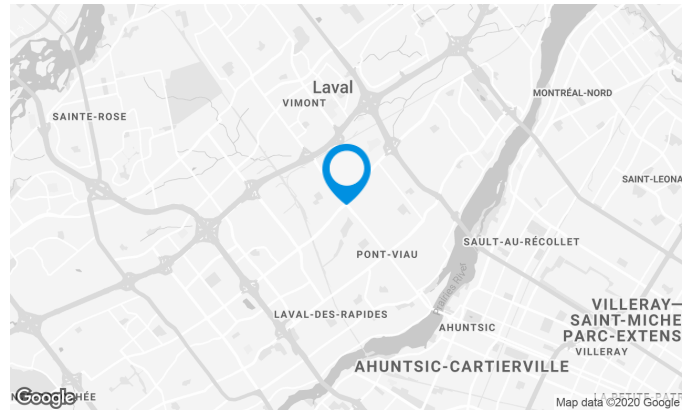
6-storey building with more than 110,000 square feet in leasable area, strategically located at the intersection of Saint-Martin and Des Laurentides Boulevards.

Building characteristics

TOTAL LEASING AREA	123,870 ft ²
NUMBER OF FLOORS	6
ELEVATORS	2
SPRINKLERS	Yes
GENERATOR	Yes
HVAC HOURS	Monday to Friday: 7:30 AM to 6 PM
SECURITY	Security guard, access cards, cameras
BUILDING SERVICES	Bank, daycare

BUILDING ACCESSIBILITY

PARC À VÉLOS DISPONIBLE	Yes
ROAD ACCESS	Des Laurentides Boulevard (335), Saint-Martin Boulevard West, De Grenoble Street
BUS	17, 27, 31, 41, 43, 60, 73, 74

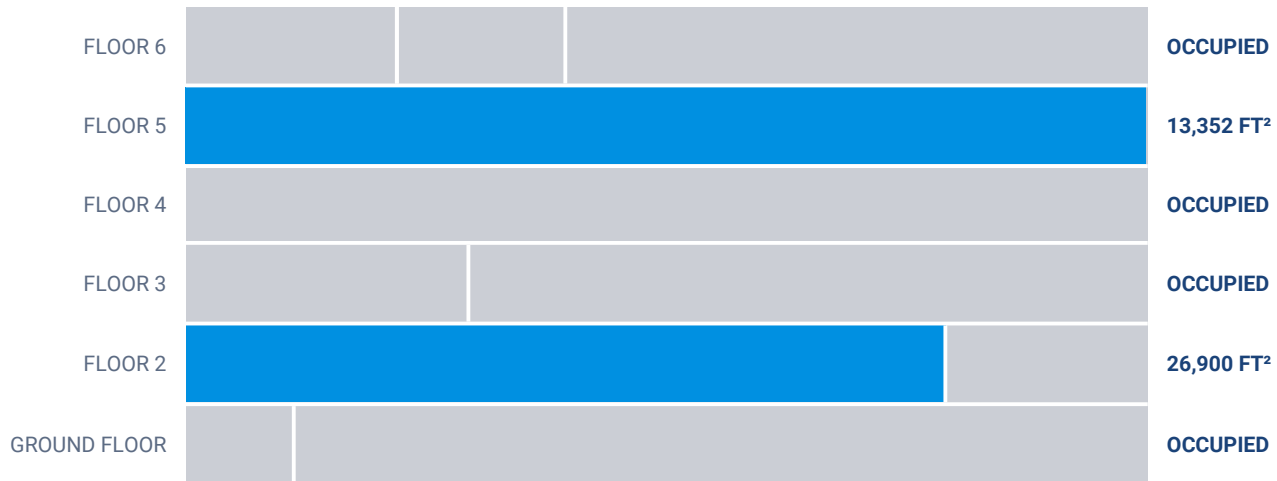


Julie Godbout

LEASING DIRECTOR
LEASING - OFFICES, MONTREAL AREA

T 514 737-3344 #3485
C 514 238-7079
E JULIE.GODBOUT@COMINAR.COM

Available leasing areas from 13,352 ft² to 100,000 ft²



List of available offices

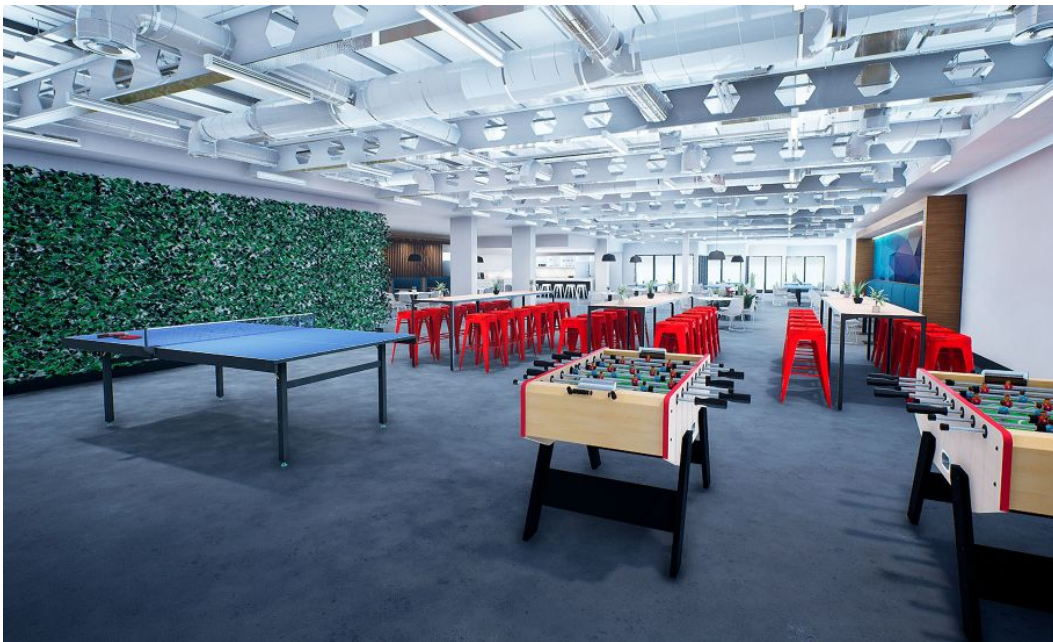
SUITE	FLOOR	AVAILABILITY	AREA
Floors 1 to 6	Combined floors	January 2021	100,000 ft²
Suite #158	RDC		3,822 ft²
Suite #200	2	Immediate	26,900 ft²
Suite #350	3		3,930 ft²
Suite #500	5	Immediate	13,352 ft²
Suite #600	6		2,935 ft²
Suite #630	6		2,343 ft²



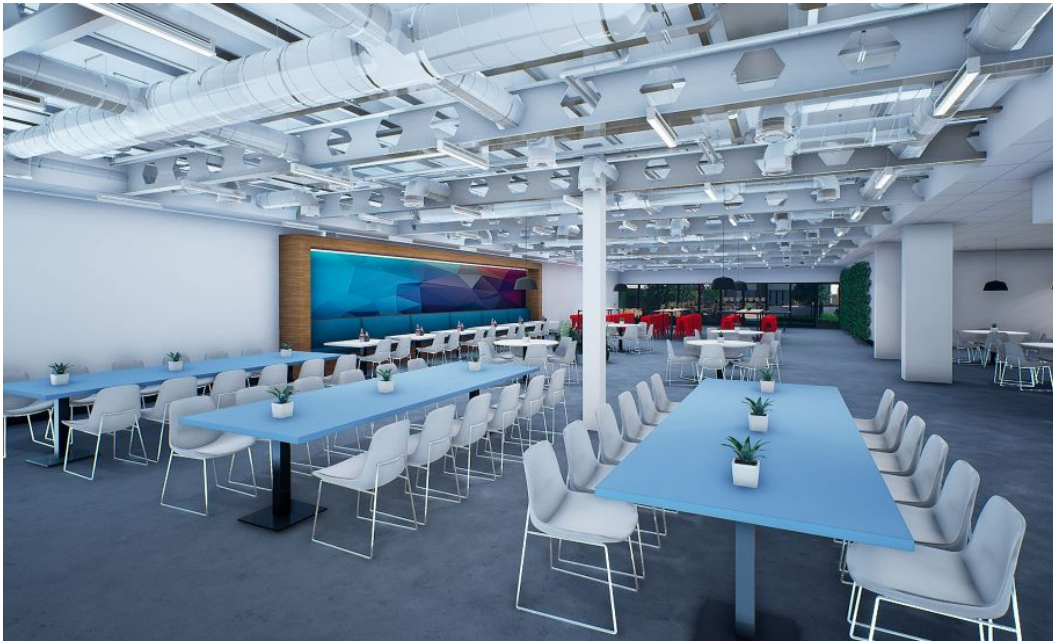
MODELING - ARTISTIC REPRESENTATION ONLY



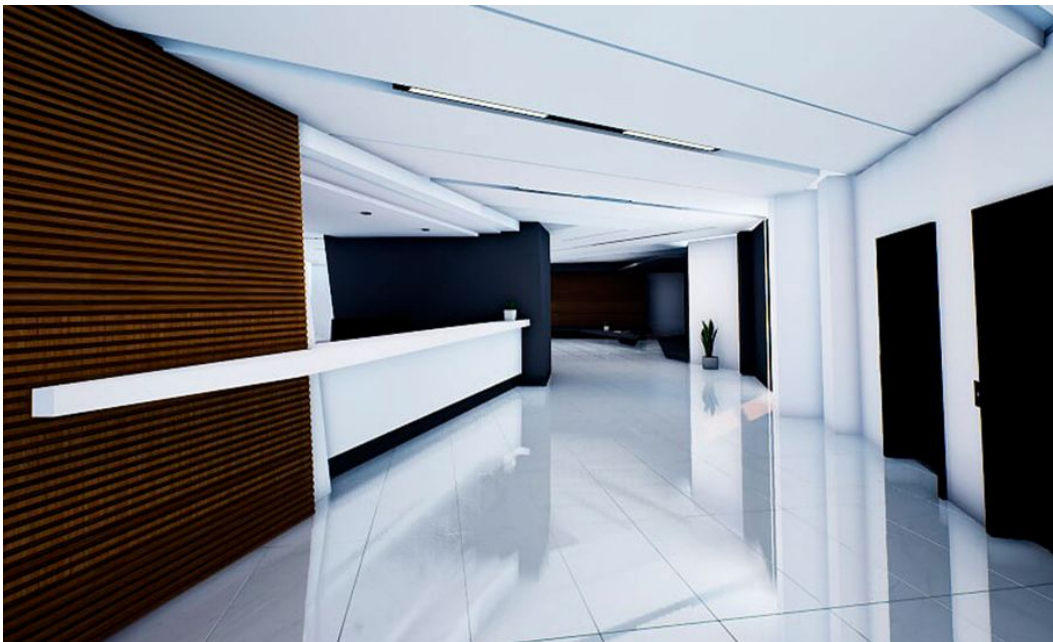
MODELING - ARTISTIC REPRESENTATION ONLY



MODELING - ARTISTIC REPRESENTATION ONLY



MODELING - ARTISTIC REPRESENTATION ONLY



MODELING - ARTISTIC REPRESENTATION ONLY



MODELING - ARTISTIC REPRESENTATION ONLY