

## Building characteristics

TOTAL LEASING AREA 29,296 sq. ft.

BUILDING AREA 29,296 sq. ft.

LAND AREA 85,114 sq. ft.

YEAR OF CONSTRUCTION 1994

NUMBER OF FLOORS 1

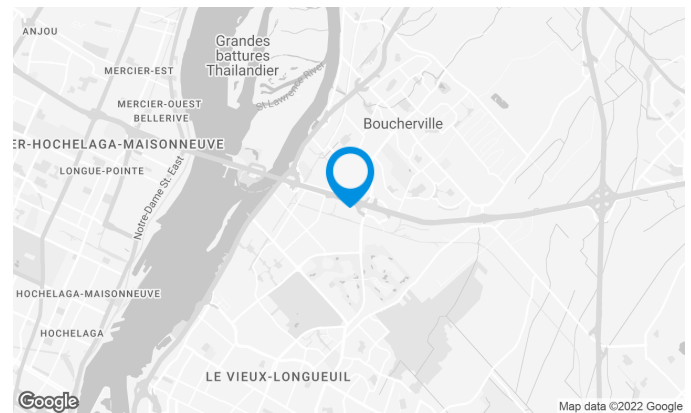
SPRINKLERS Yes

## BUILDING ACCESSIBILITY

OUTDOOR PARKING 30

ROAD ACCESS Highway 20  
Jacques-Cartier Boulevard  
De Mortagne Boulevard

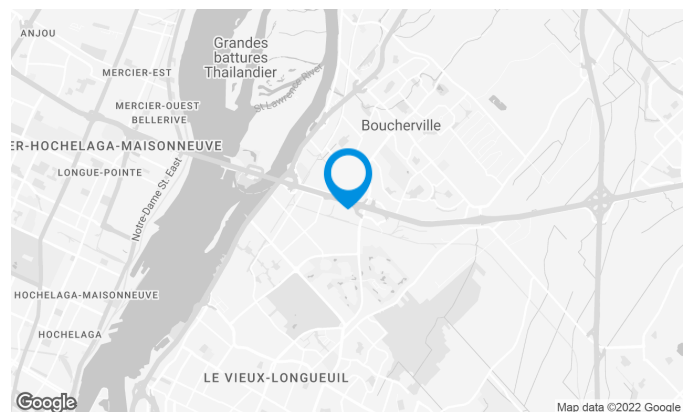
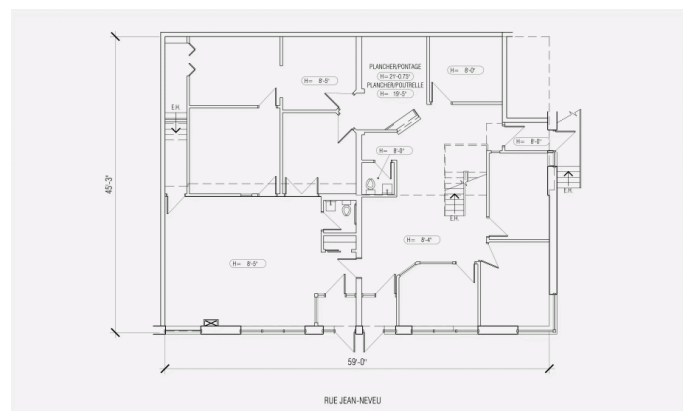
BUS 25, 123, 161



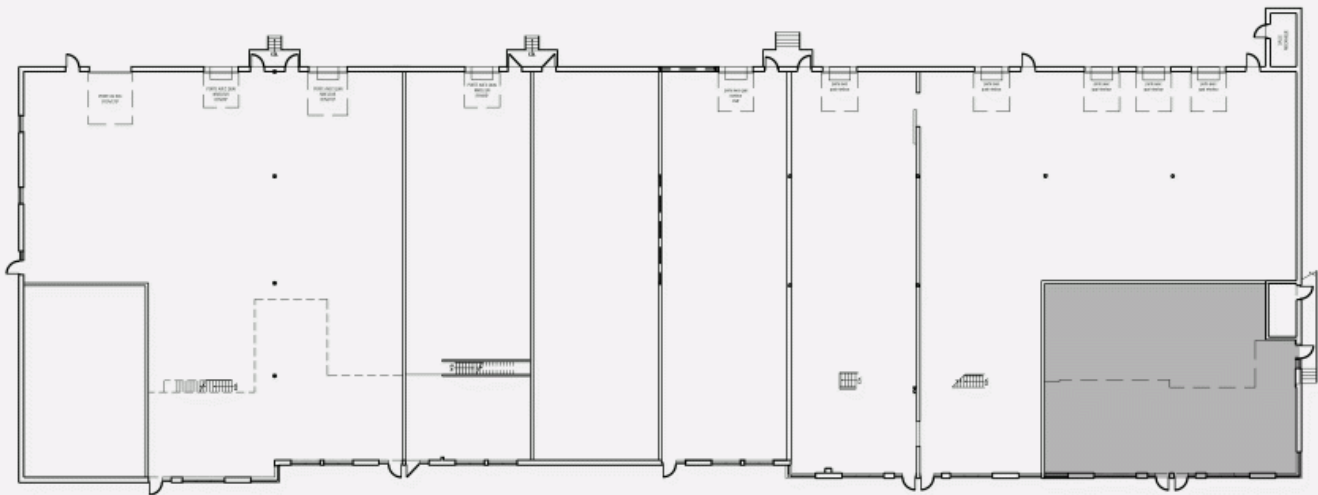
Local on 2 floors

## Space characteristics

AVAILABLE LEASING AREA	4,048 sq. ft.
AVAILABILITY	Immediate
FLOOR AREA	29,296 sq. ft.
ADDITIONAL RENT	\$4.44 /sq. ft.

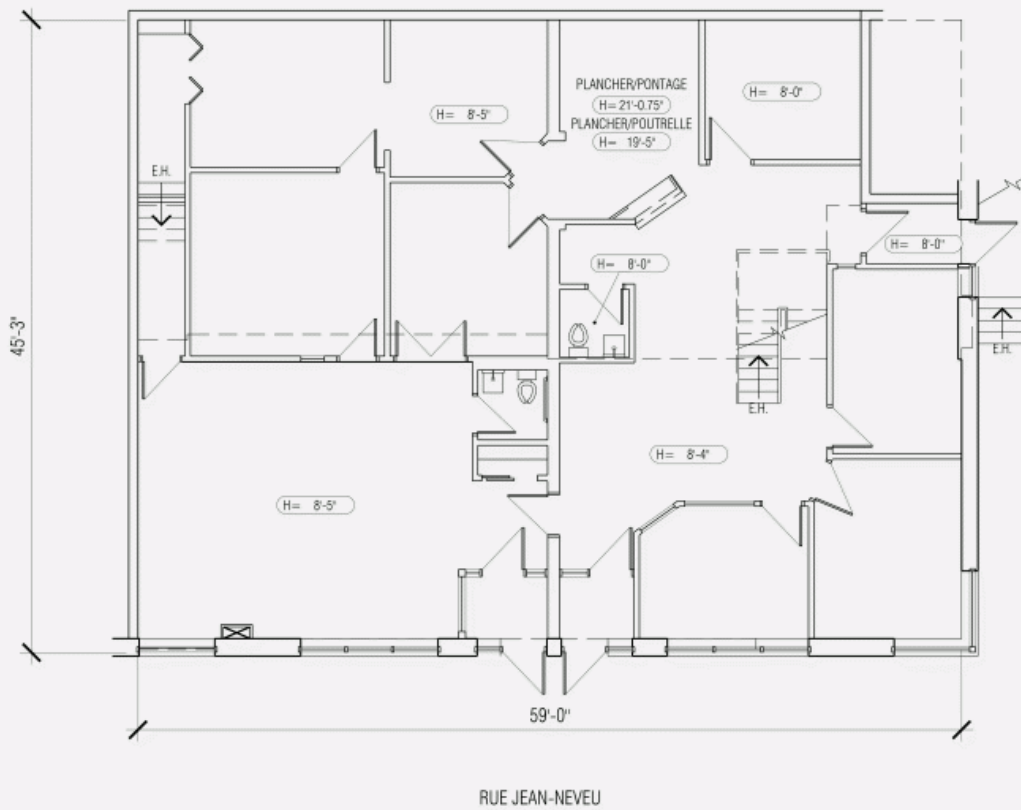


LOCATION PLAN - GROUND FLOOR

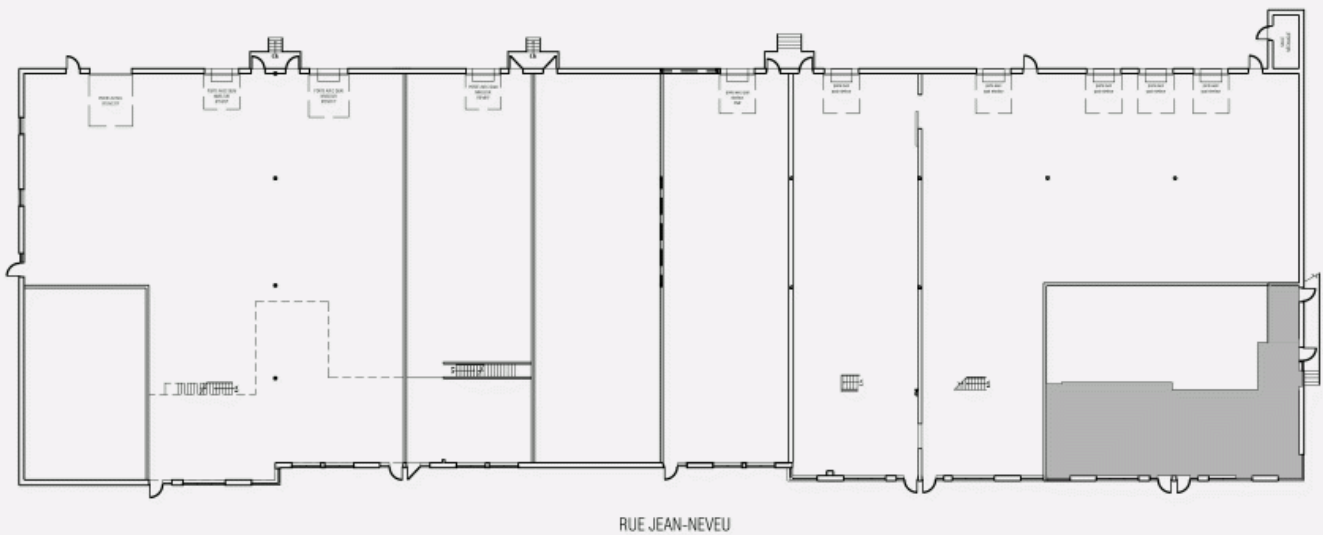


RUE JEAN-NEVEU

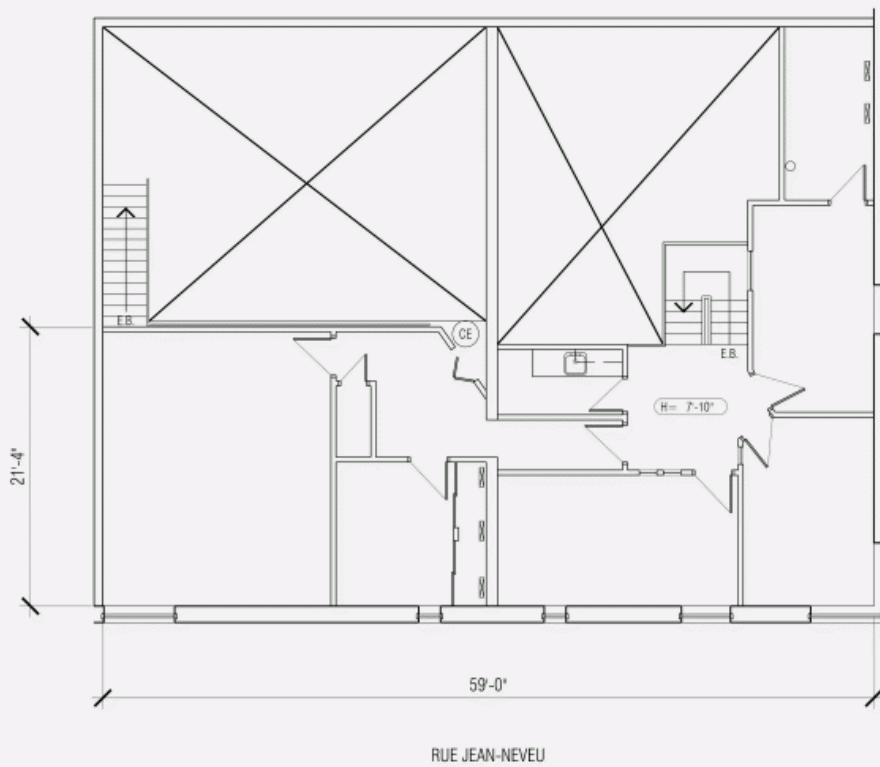
LAYOUT PLAN - GROUND FLOOR



LOCATION PLAN - 2ND FLOOR



LAYOUT PLAN - 2ND FLOOR



**874-896 Jean-Neveu Street, Longueuil, QC, J4G 2M1**  
**Suite #878**

